

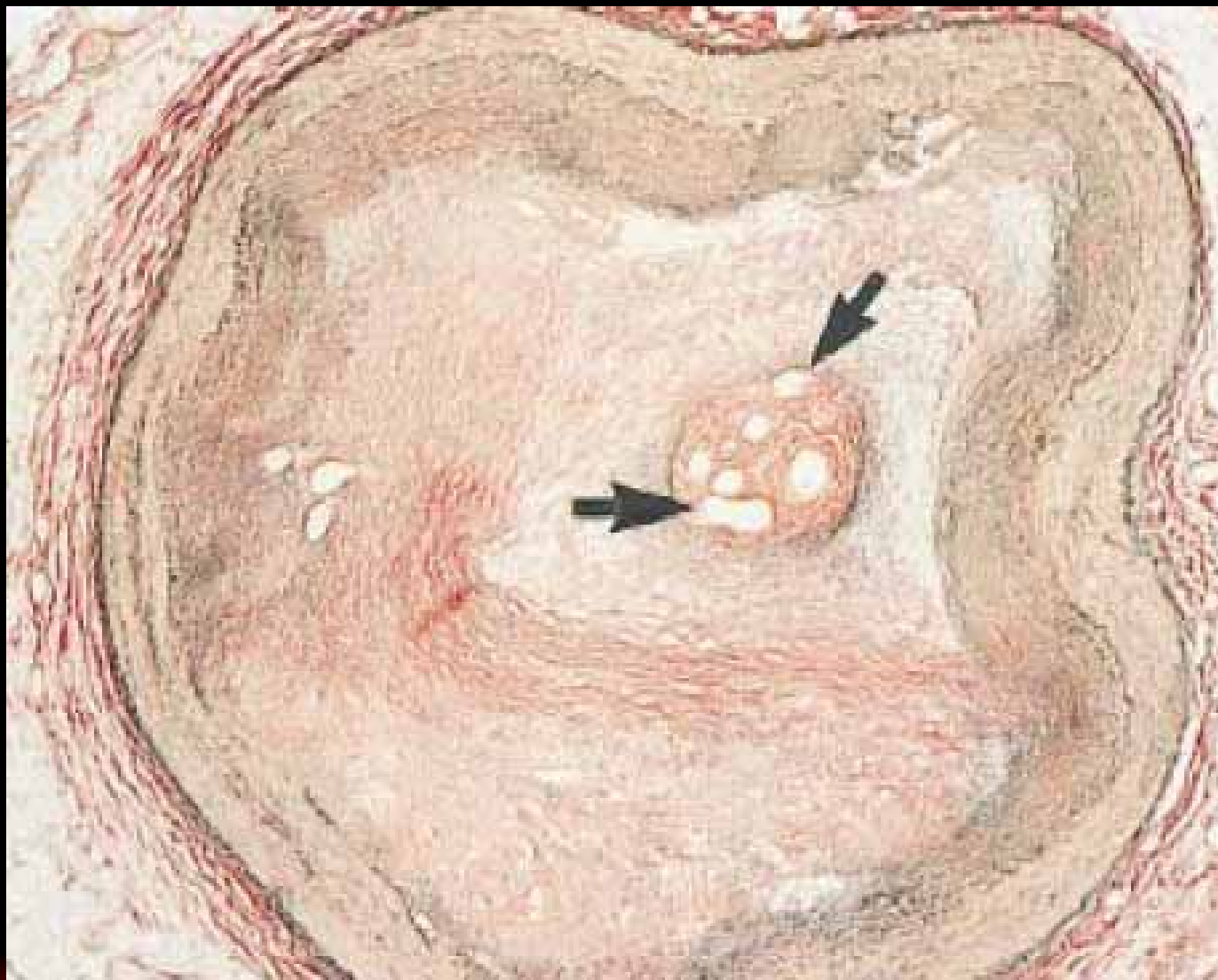
# Best Digging of Antegrade Route

Toyohashi Heart Center  
Yasushi Asakura M.D.



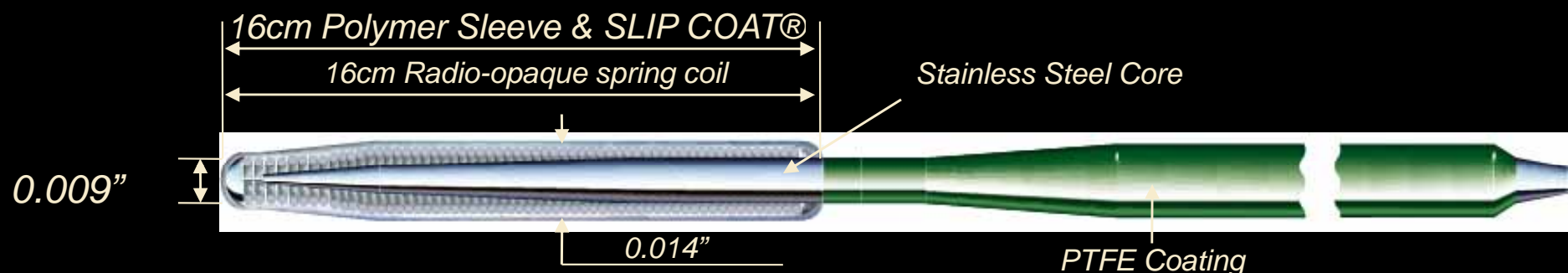


# Microchannels in CTO





# Structure of Fielder-XT



**0.009 Tapered Tip**

**Hydrophilic Coating & Polymer Sleeve**

**Tip Load: 0.8g**



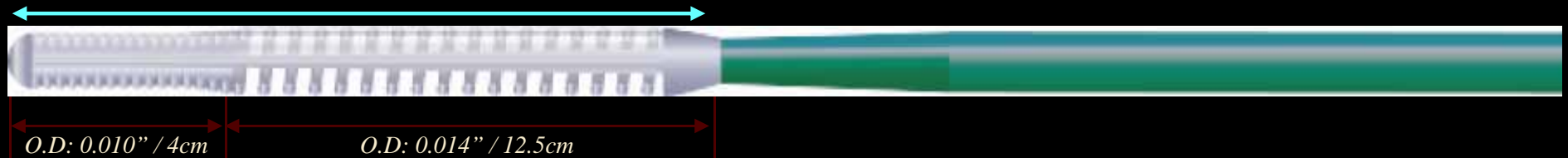
PTCA GUIDE WIRE  
**A T H L E T E**



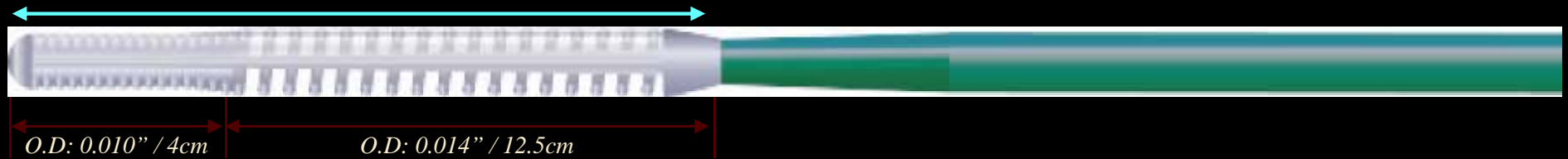
*Sleek-Coat Technology with Hydrophilic Coating*  
*Stainless One Piece Core Shaft*  
*0.010" - 0.014" Taper Design*



1g



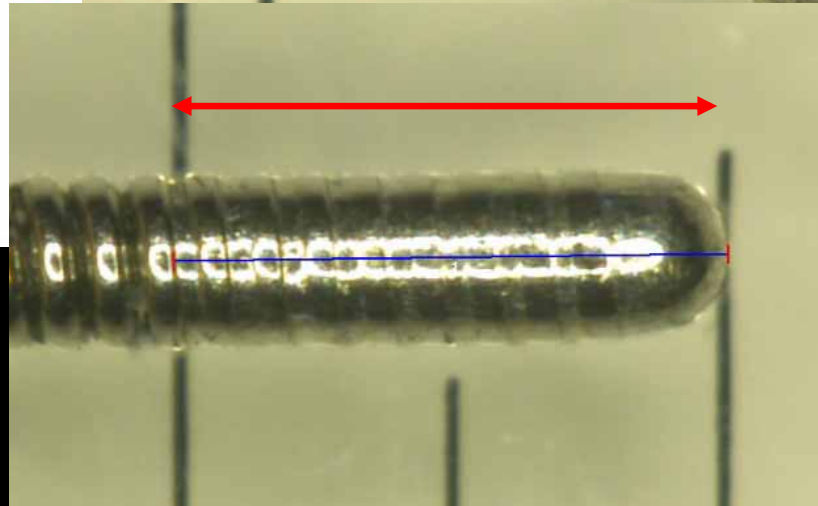
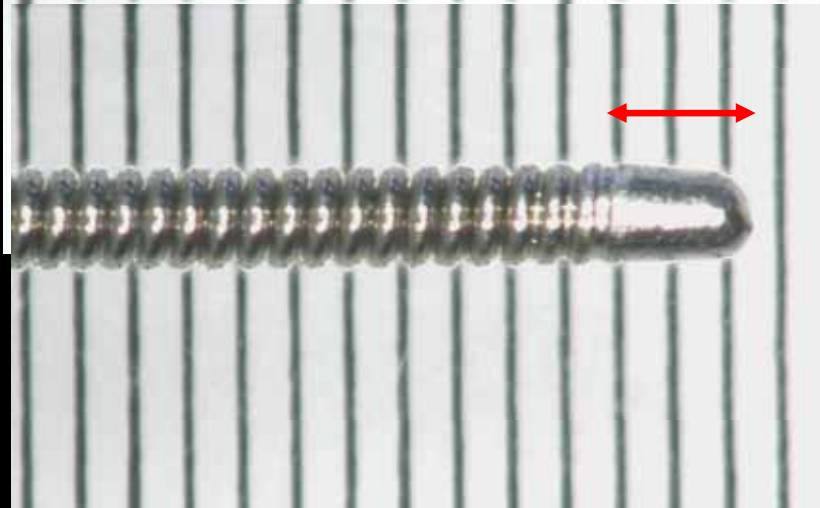
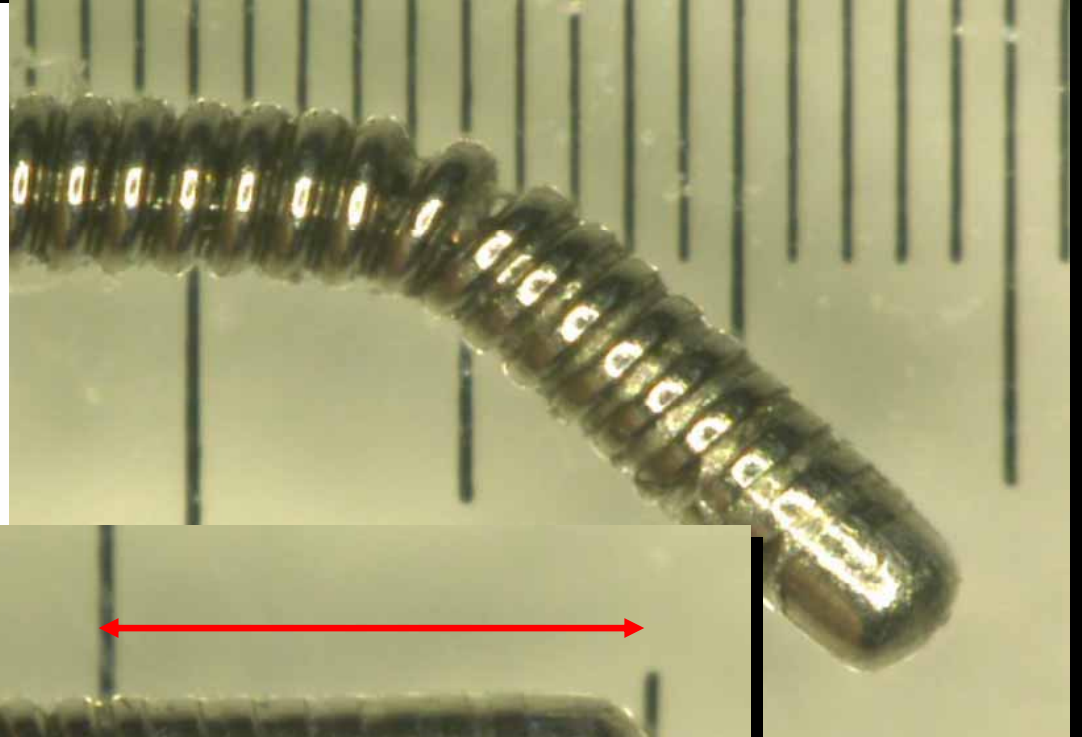
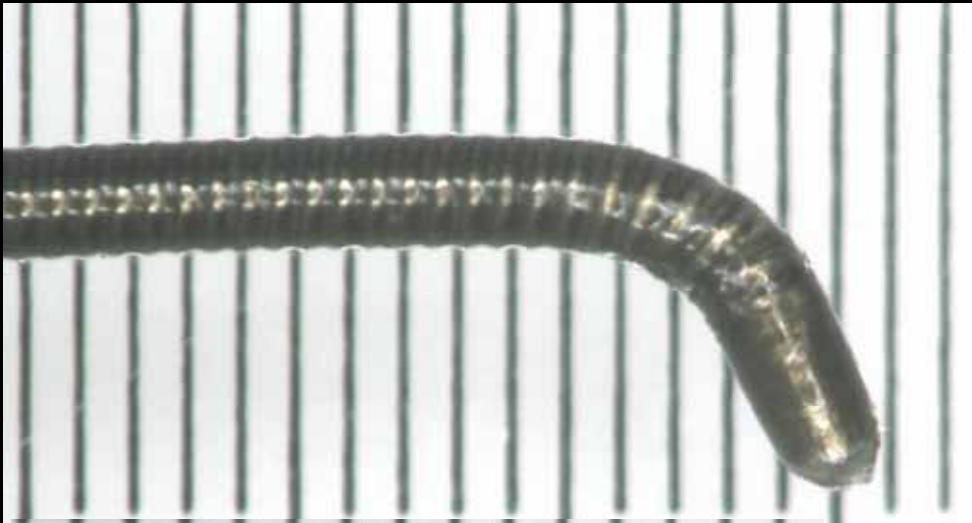
3g



Model	Tip Stiffness	Radiopaque	Coating	全長
WIZARD 1	1g	16.5cm	17cm Hydrophilic	178cm
WIZARD 3	3g	16.5cm	17cm Hydrophilic	178cm



# Soldering Length at Wire Tip

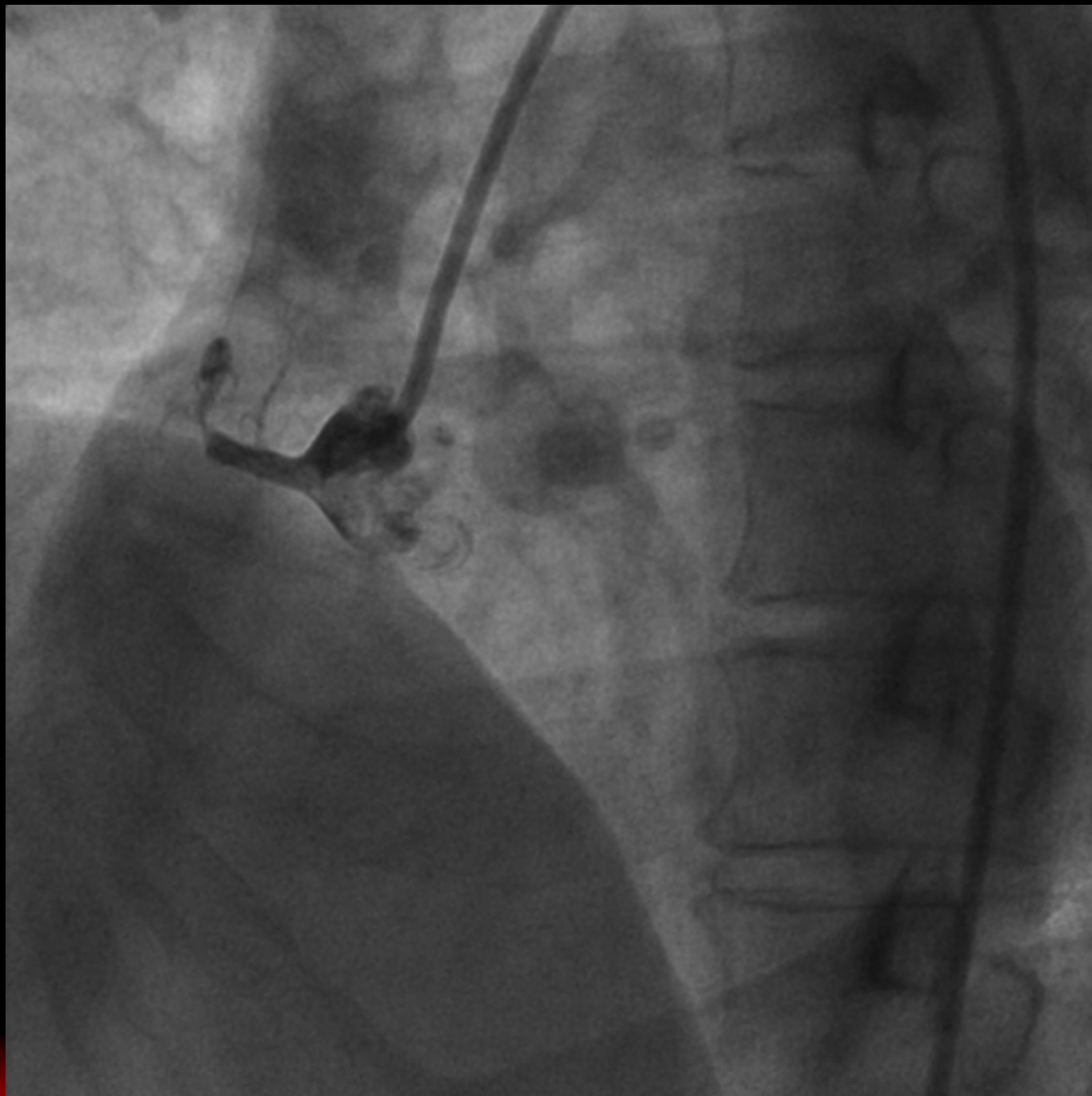


*Fielder-XT*

*0.014" wire*

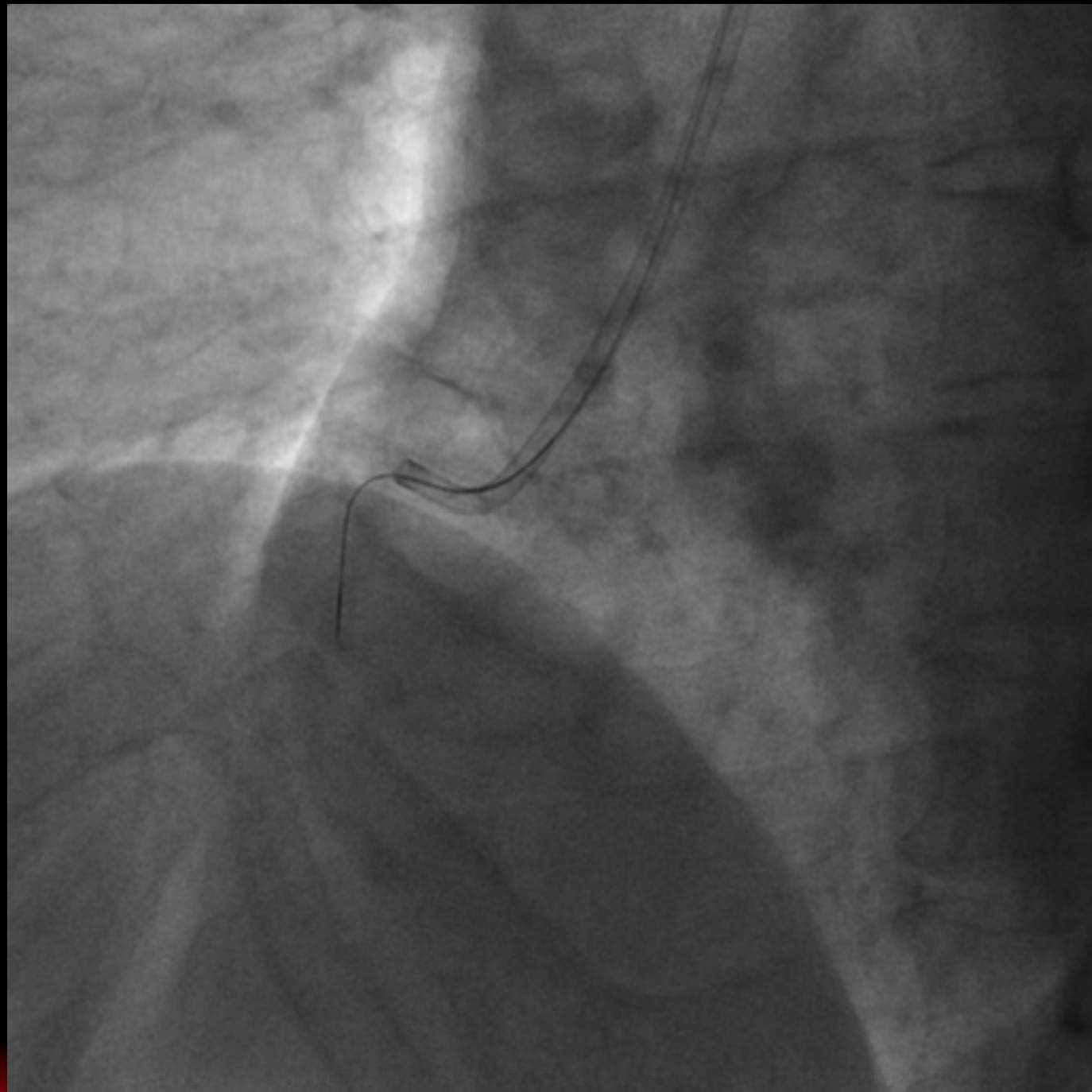


# Case





# Fielder XT







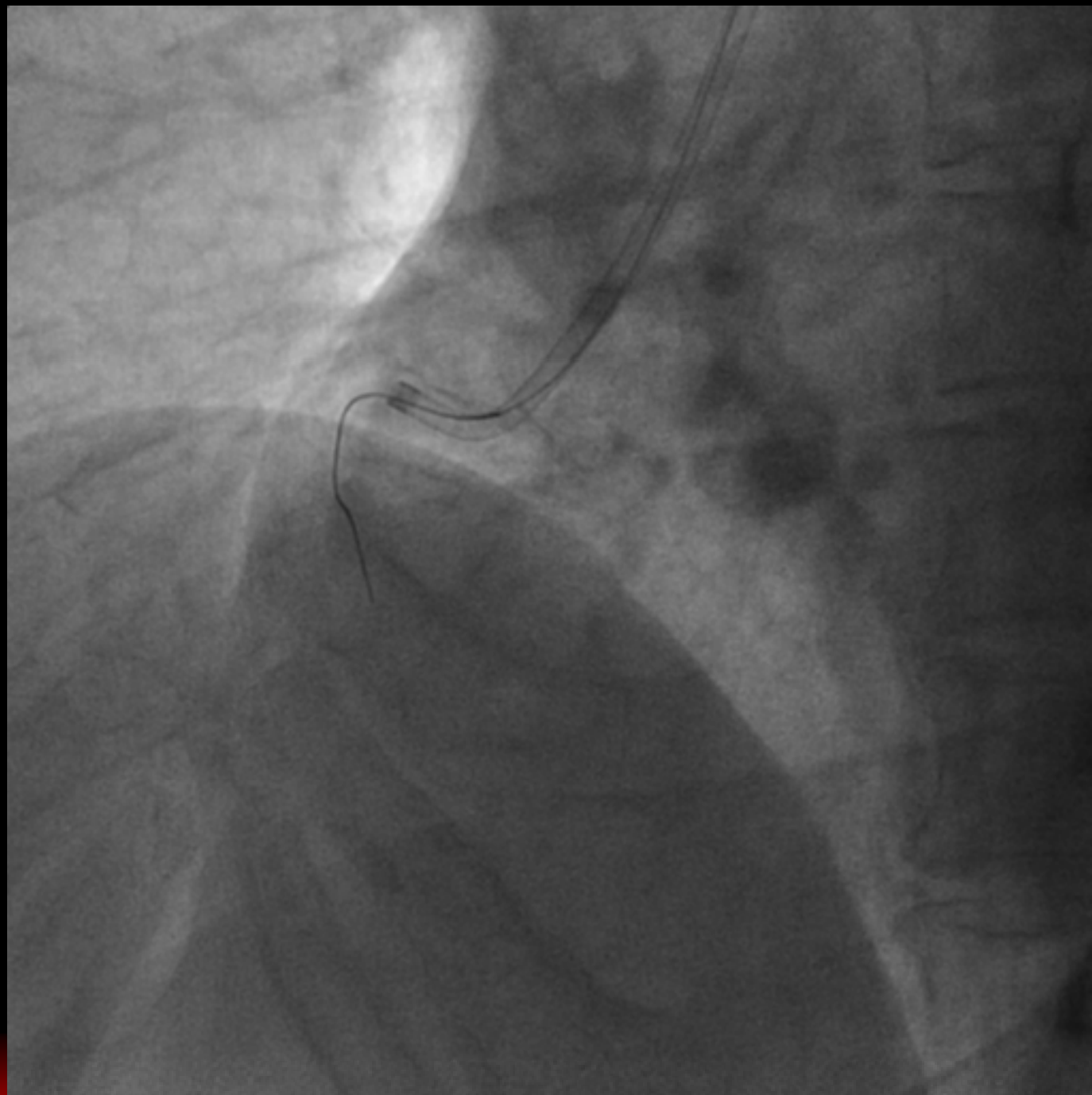
# Wire Manipulation





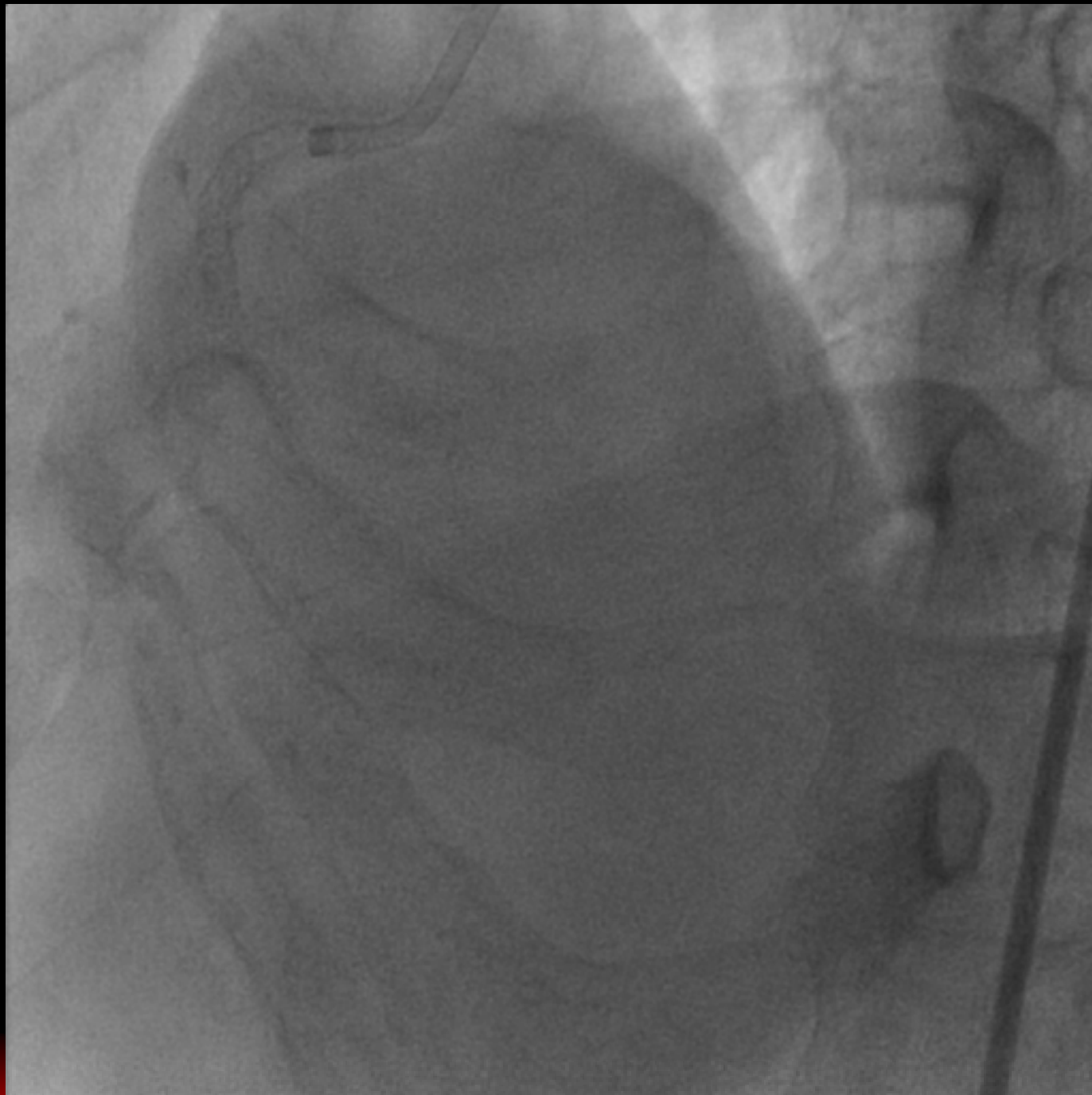


# Fielder XT



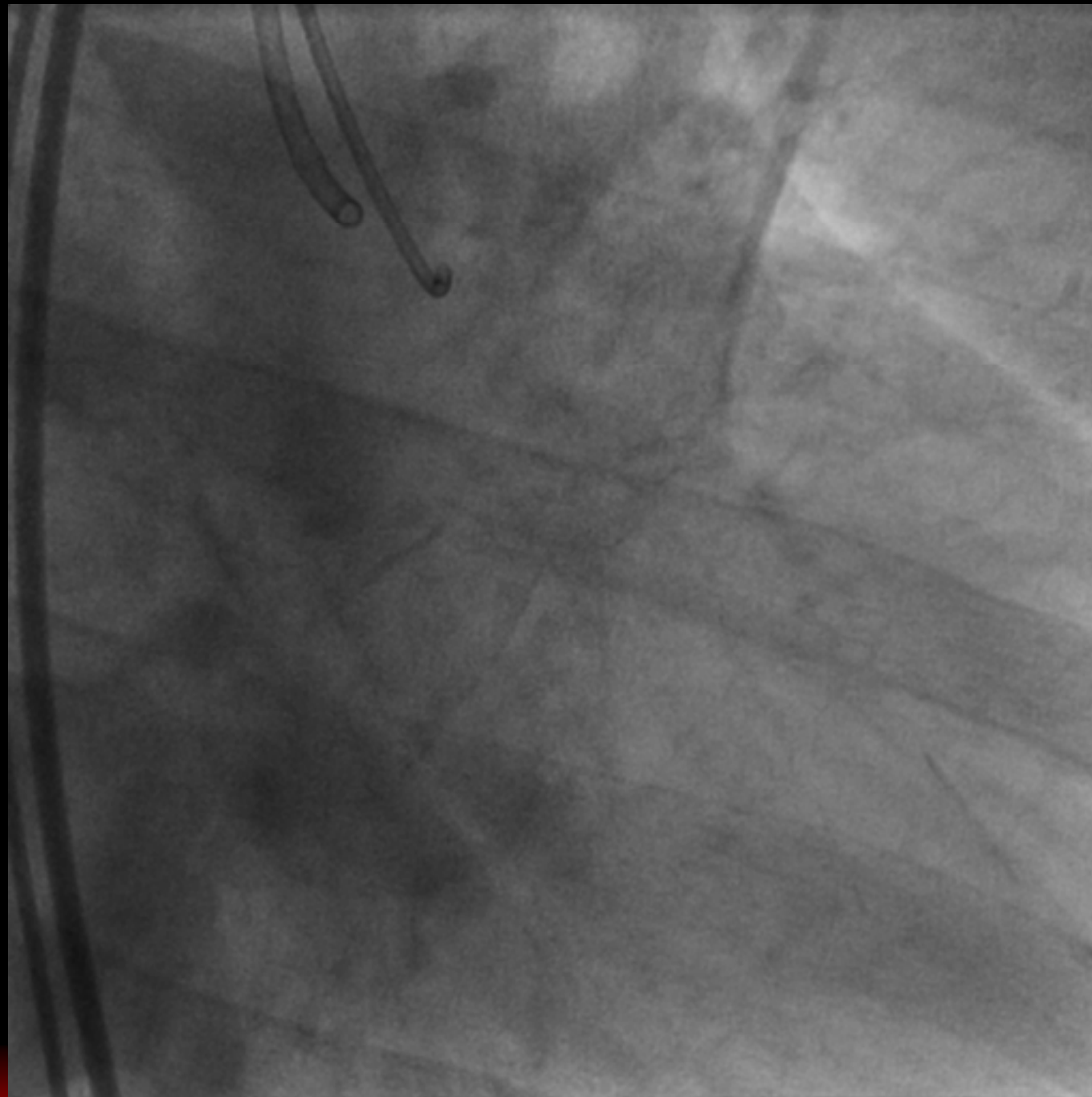


**Final**



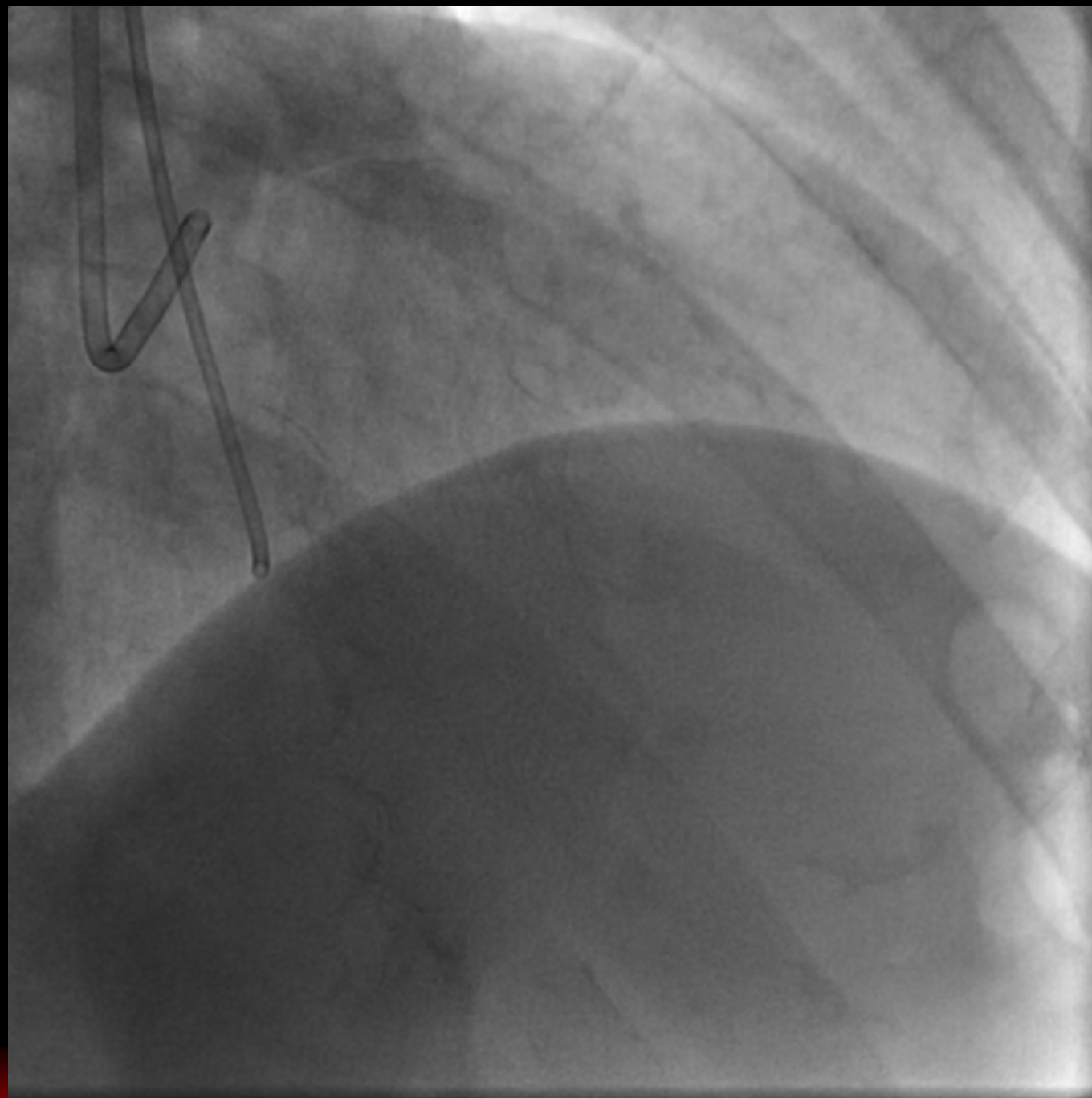


**Case**  
**AP**  
**(3 months)**



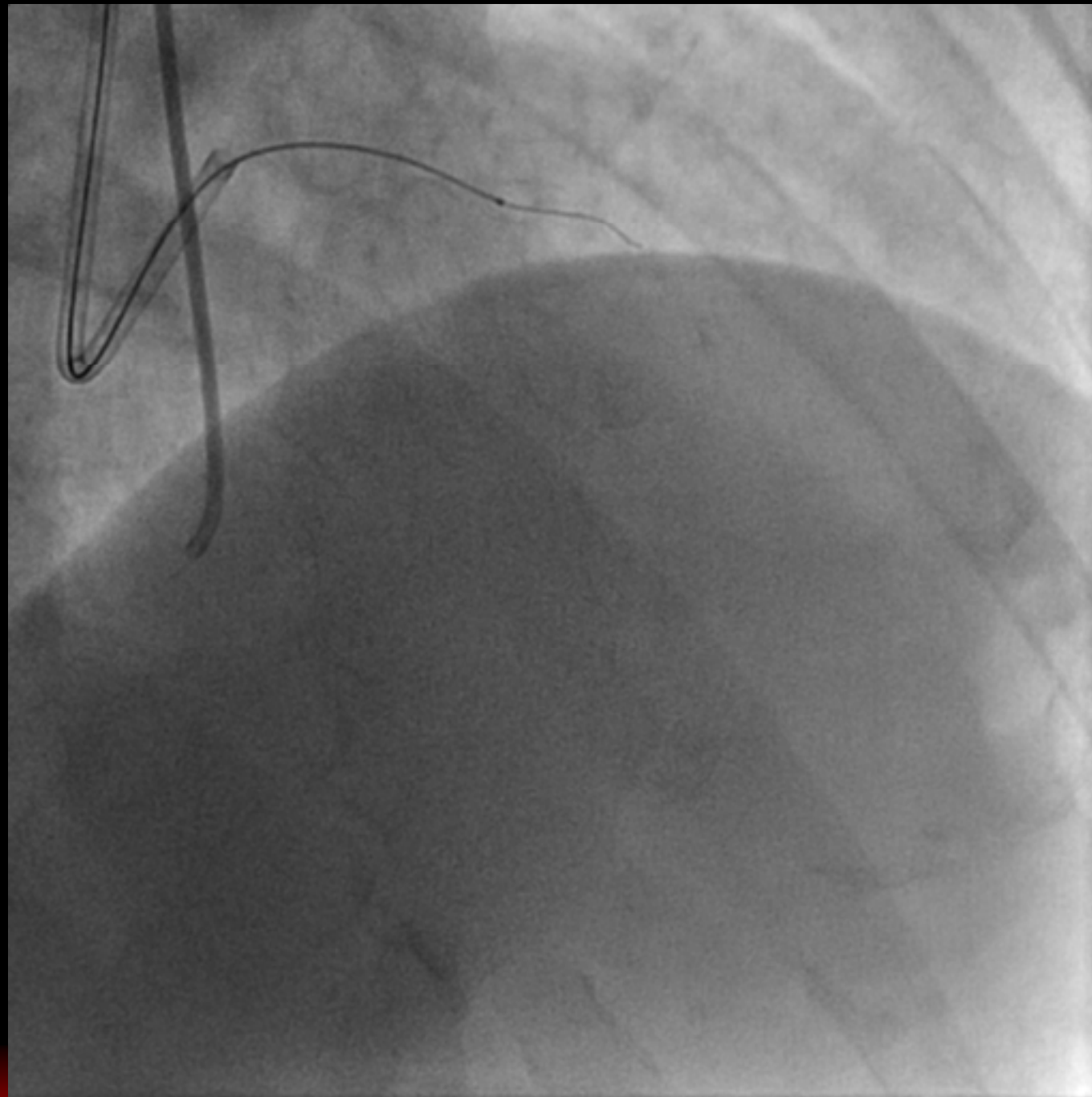


# RAO Cranial





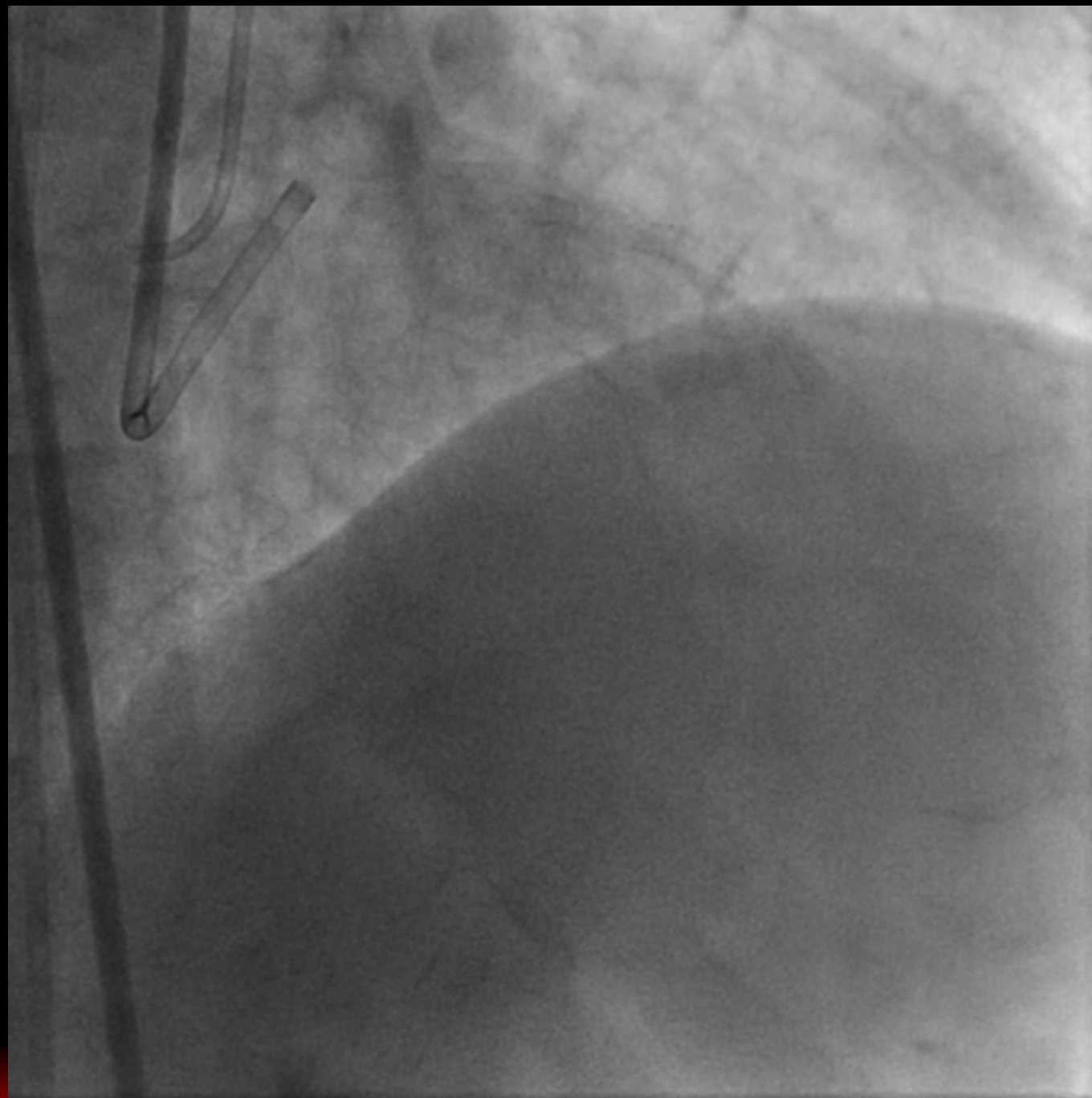
# Fielder FC







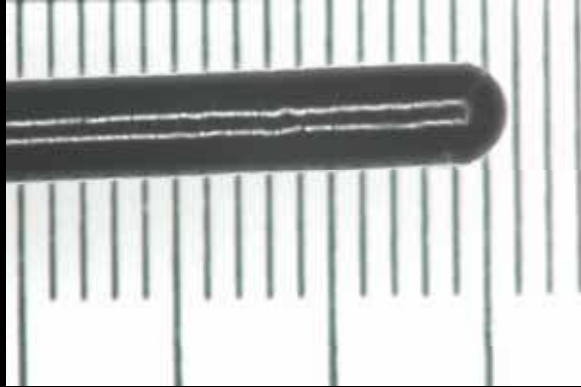
**Final**



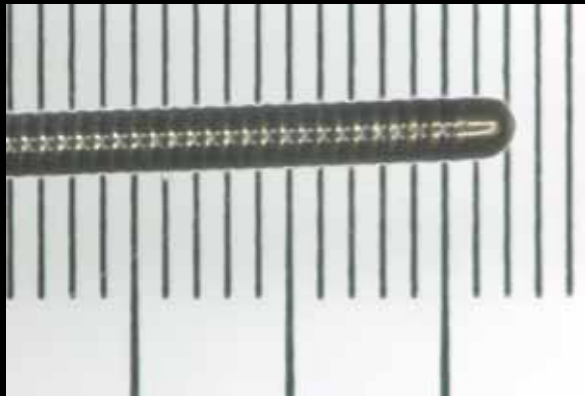




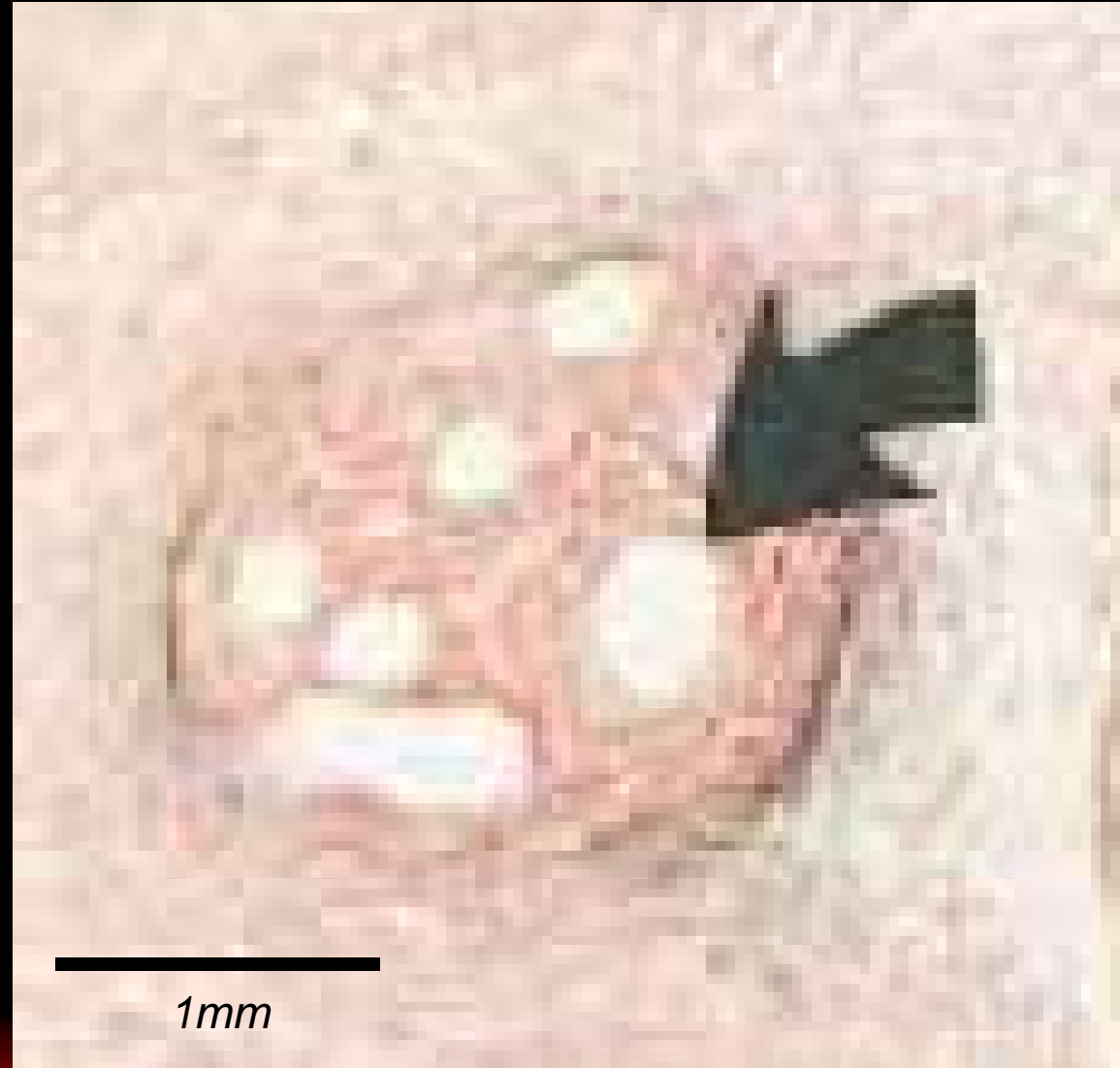
# Microchannels and Wire Tip



***0.014 inch : 0.36mm***

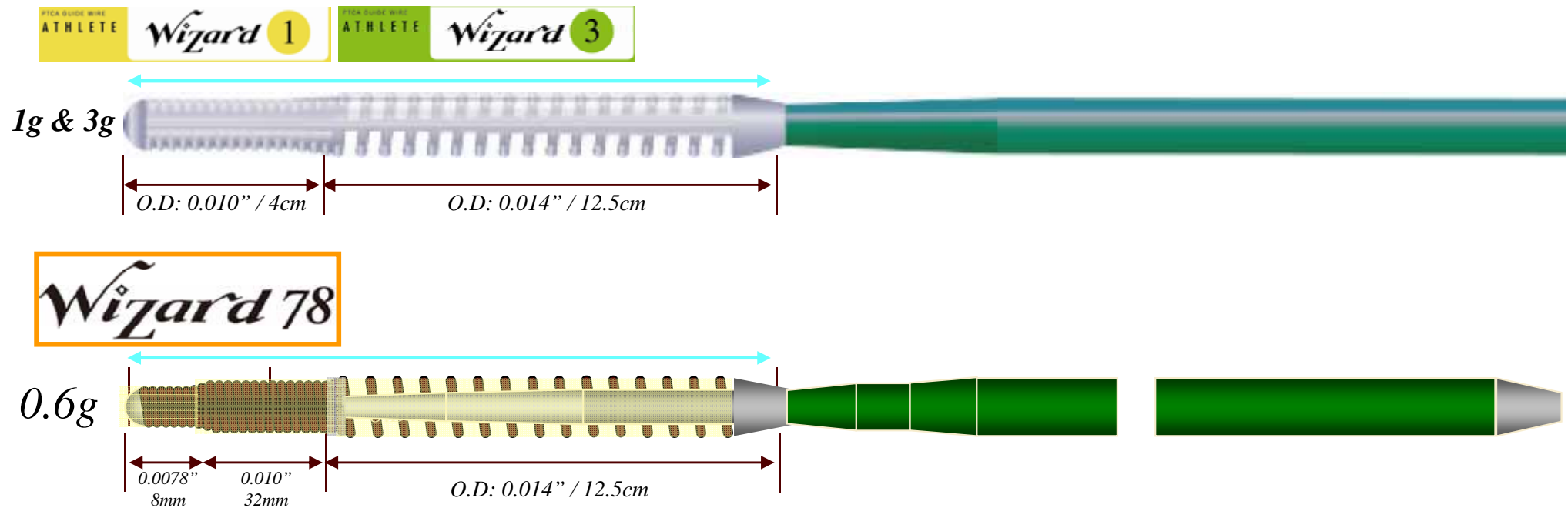


***0.009 inch : 0.23mm***





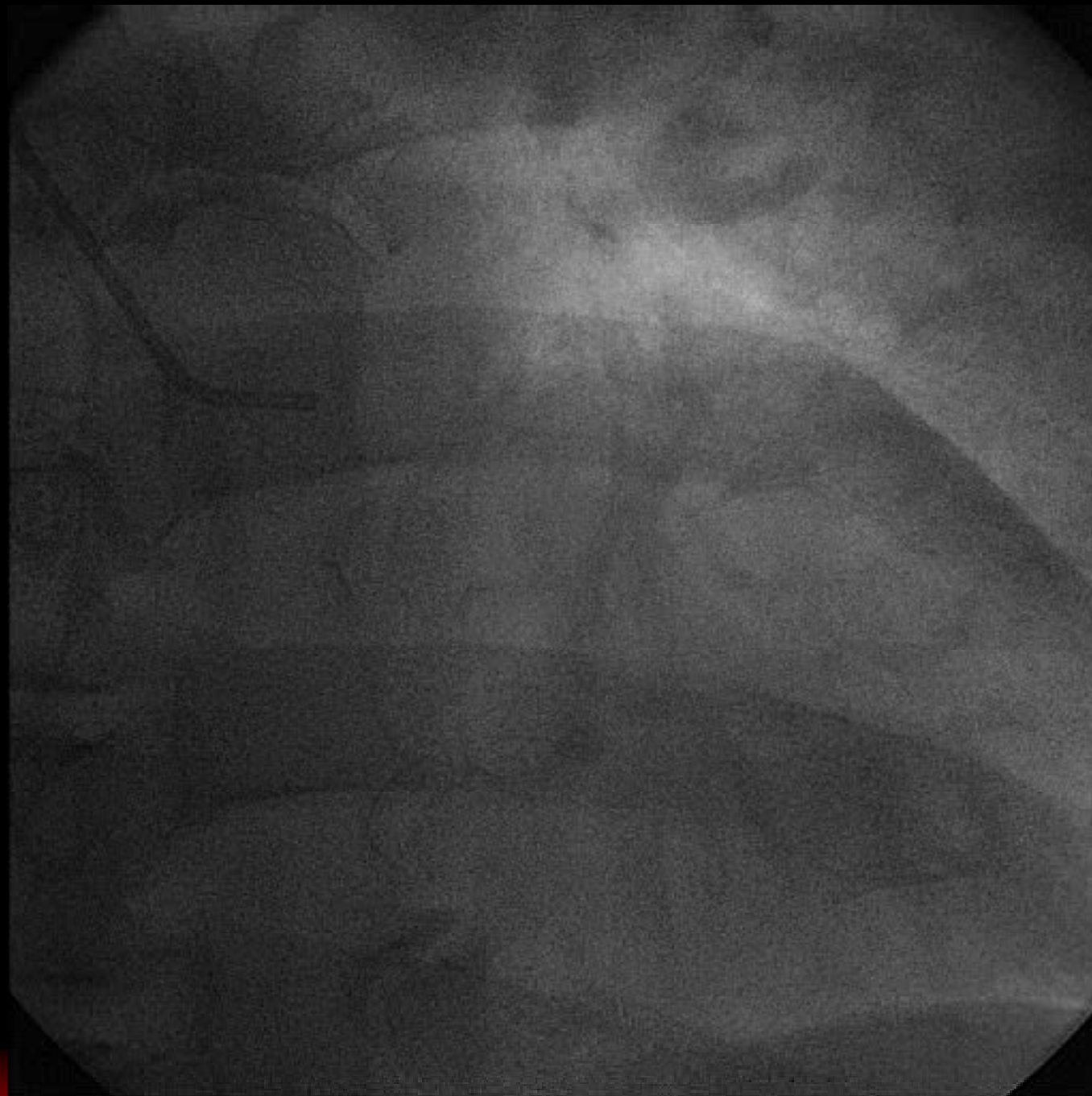
# Wizard & Wizard78 Specifications



Model	Tip Stiffness	Distal Tip O.D (inch / mm)	Proximal Shaft O.D (inch)	Radiopaque	Coating
WIZARD	1g & 3g	0.010" / 0.254	0.014"	16.5cm	17cm Hydrophilic
WIZARD 78	0.6g	0.0078" / 0.198	0.014"	16.5cm	17cm Hydrophilic

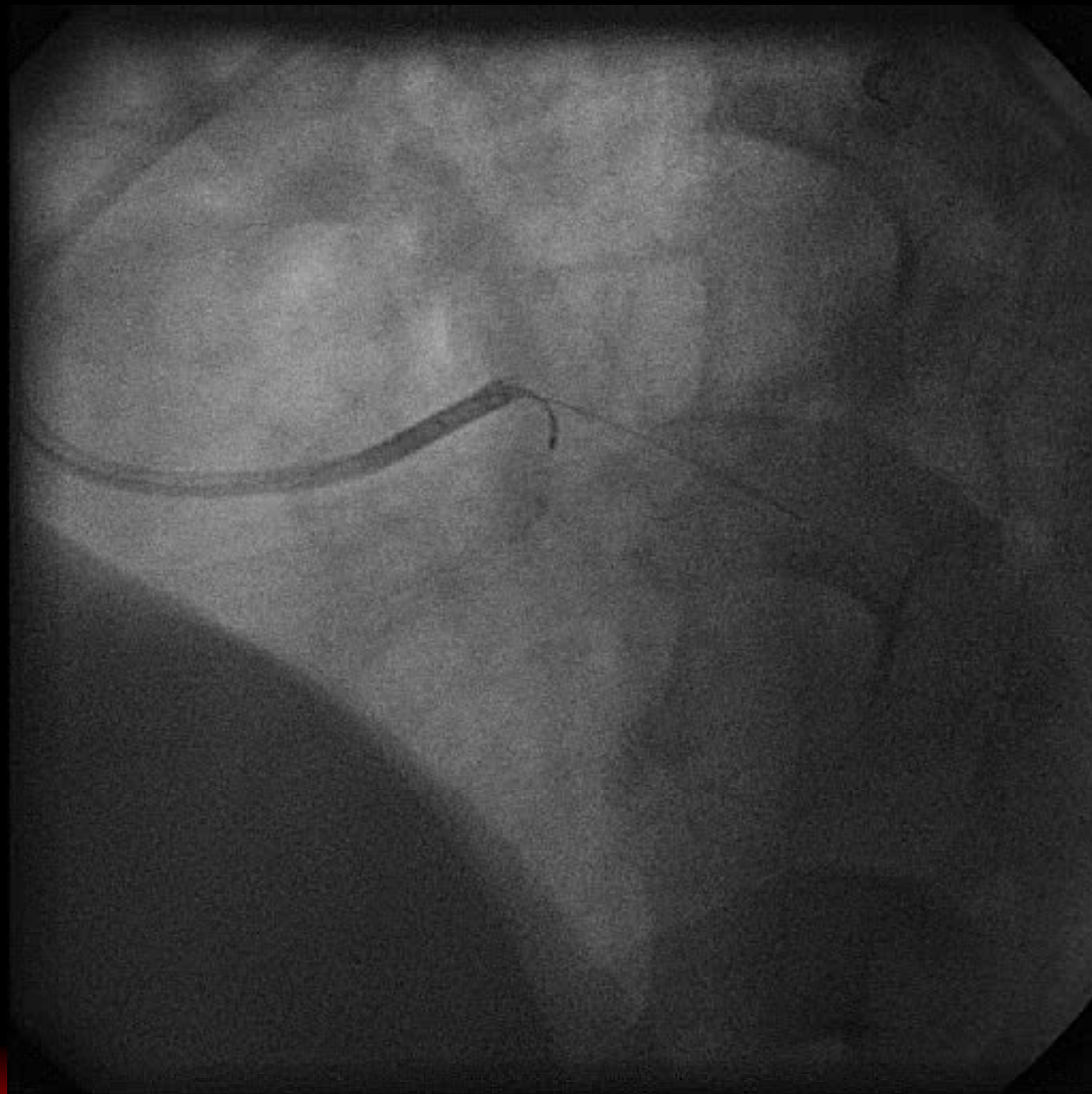


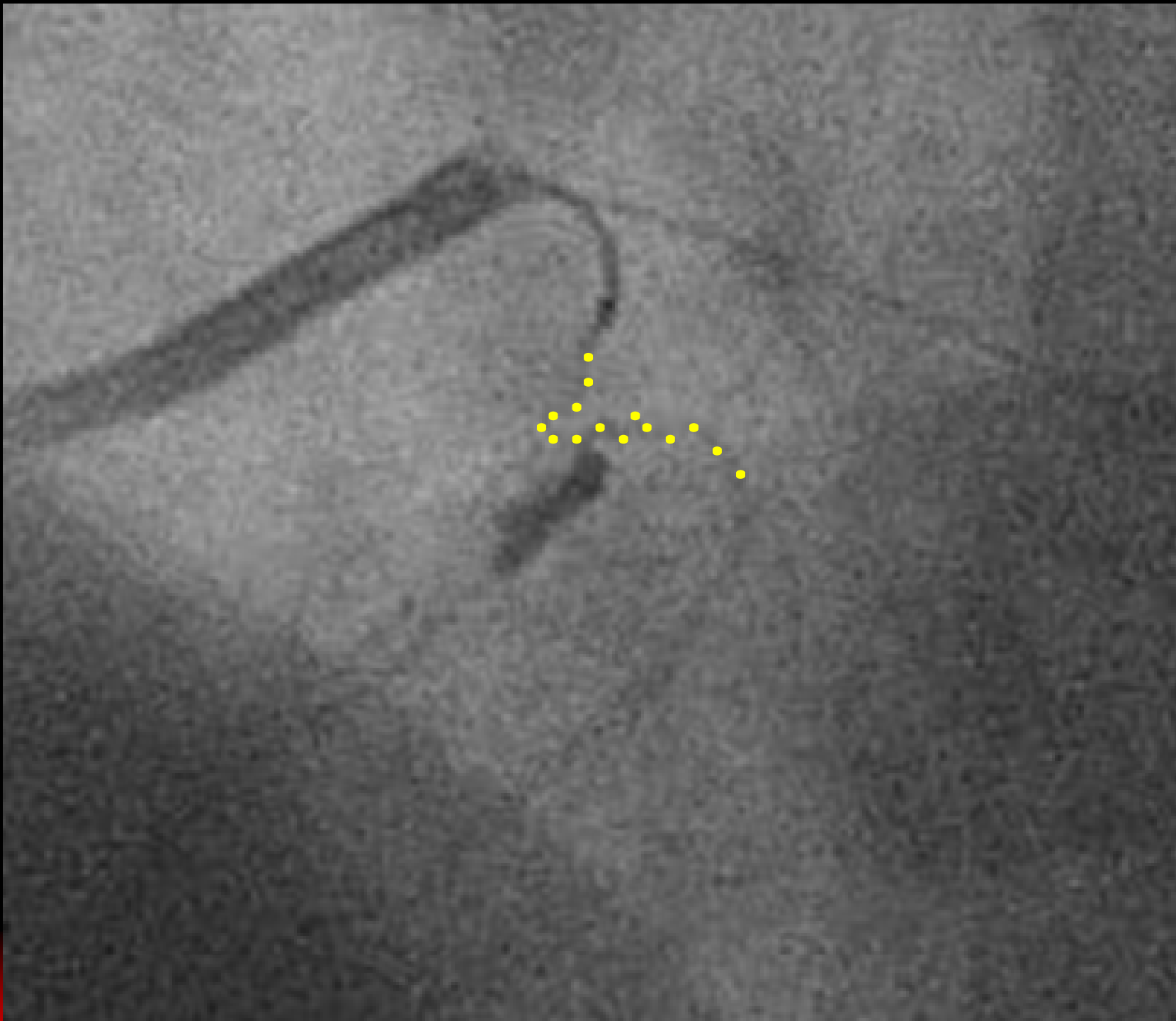
# Case RCA





# Tip Injection

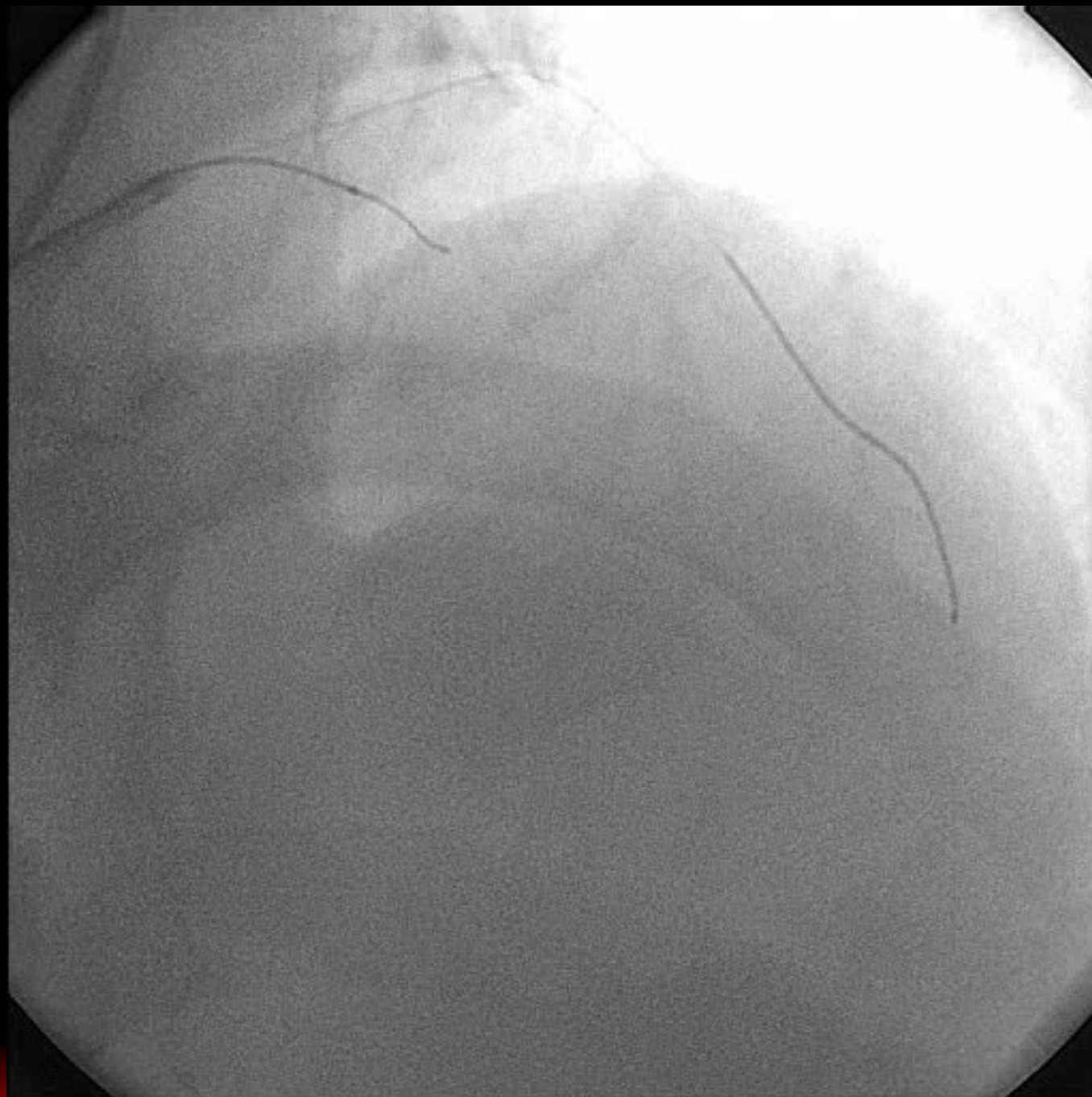








# Fielder-XT





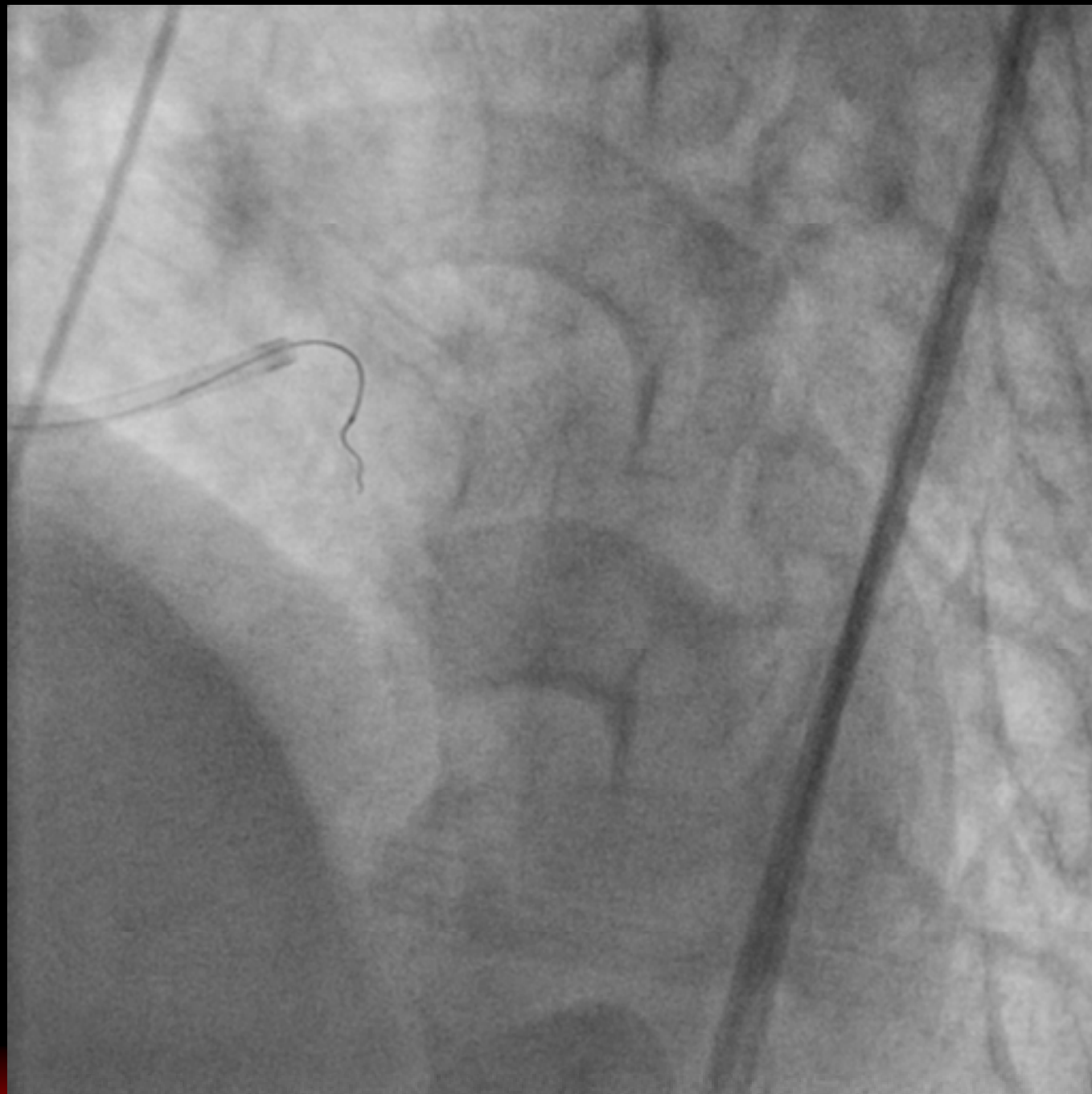


**Final**



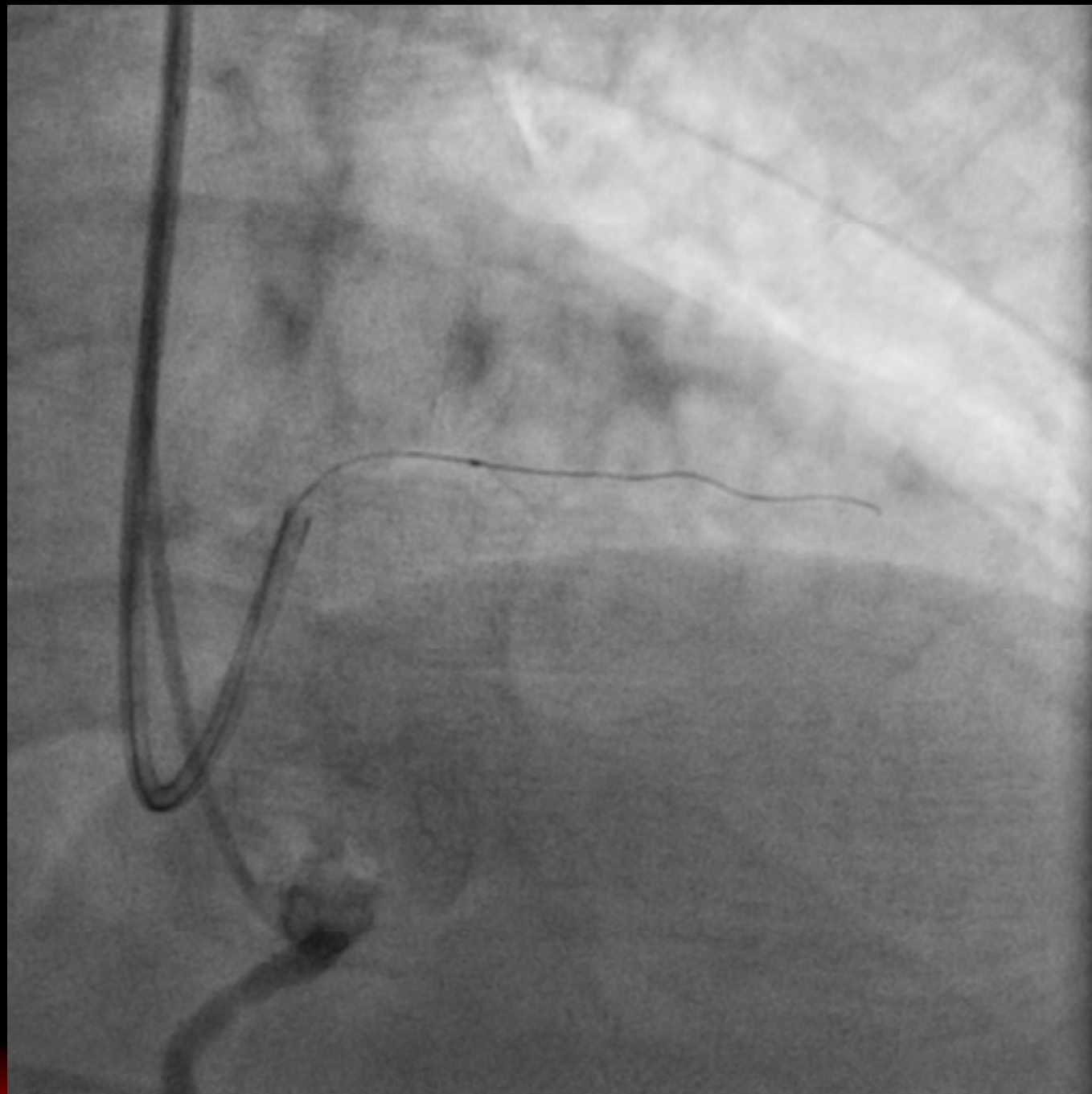


# Wizard 78





# Wizard 78



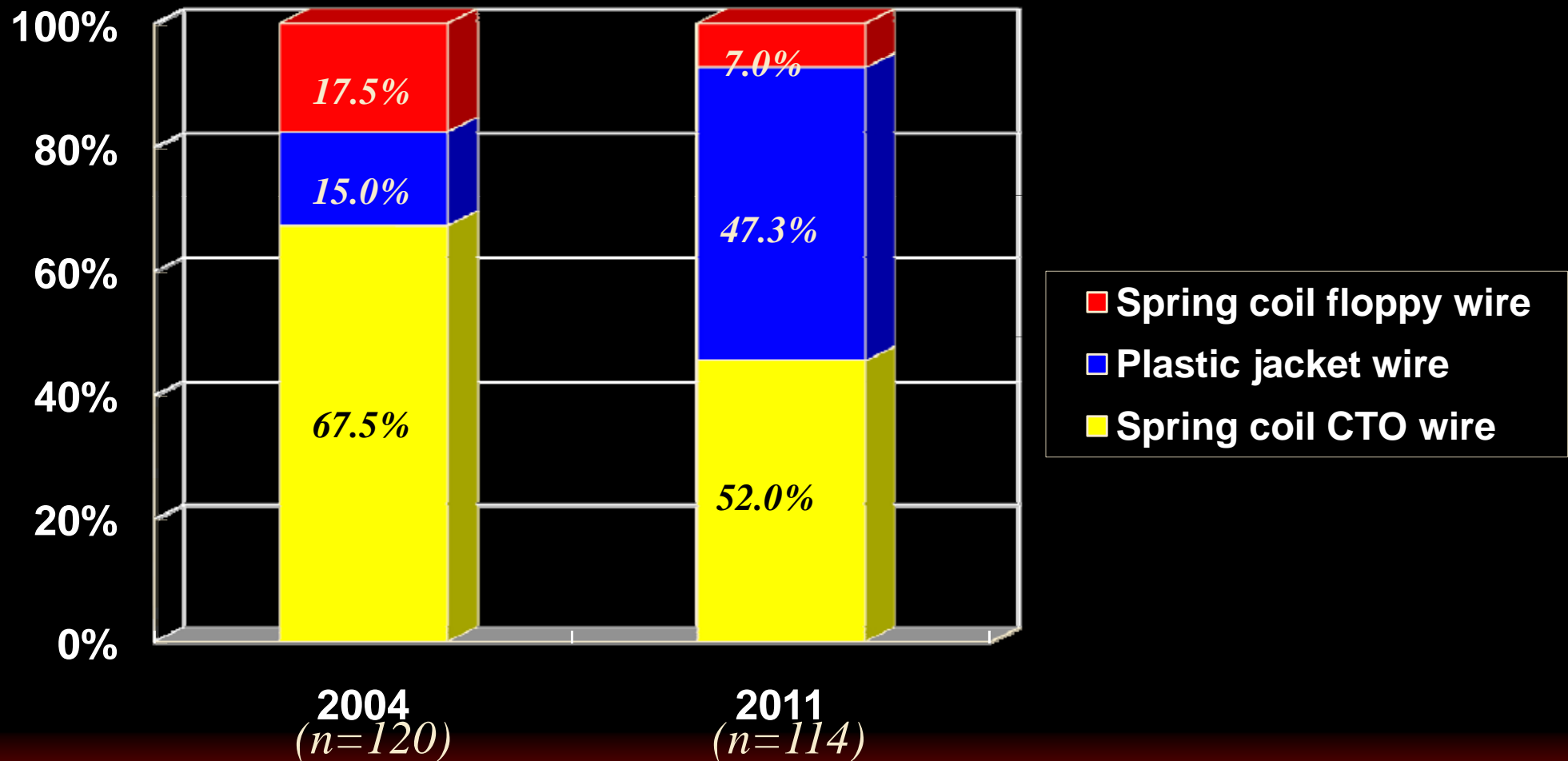


**Final**





# Crossing Guide Wire in THC





# GW Selection

- ✓ **1<sup>st</sup> Choice**                      **Fielder-XT**
- ✓ **Recent Closure**                **Fielder-FC**
- ✓ **Tortuous Channel**              **Wizard 78**

**Gaia, Abbyss**

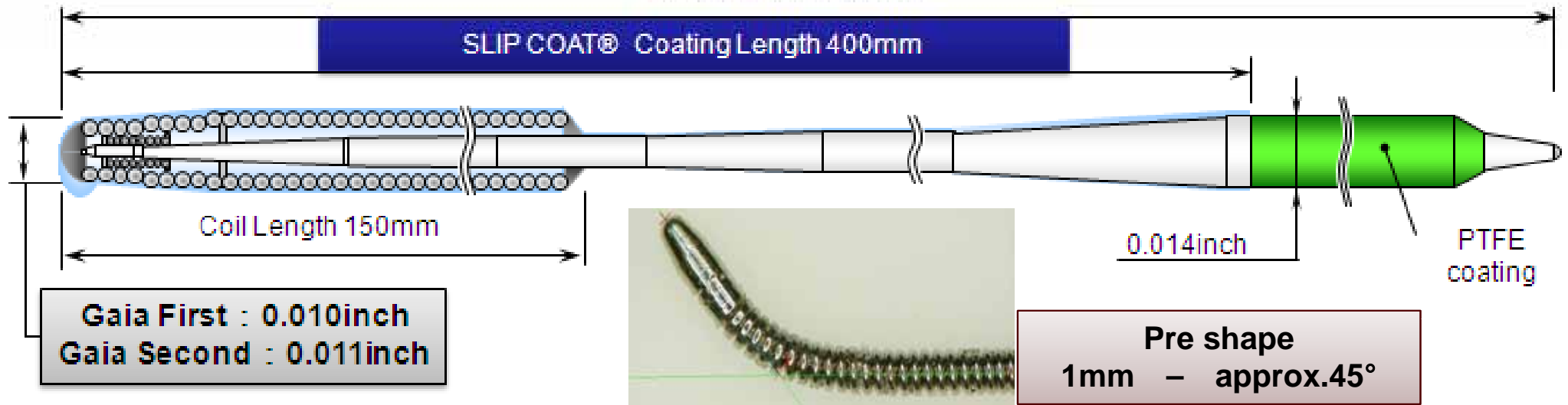
**Confianza**



# Basic structure



Total Length 1900mm



Line-up options allow the operator to choose the appropriate wire for a variety of situations

Gaia First

Diameter : 0.010 - 0.014"

Tip load : 1.5gf

Gaia Second

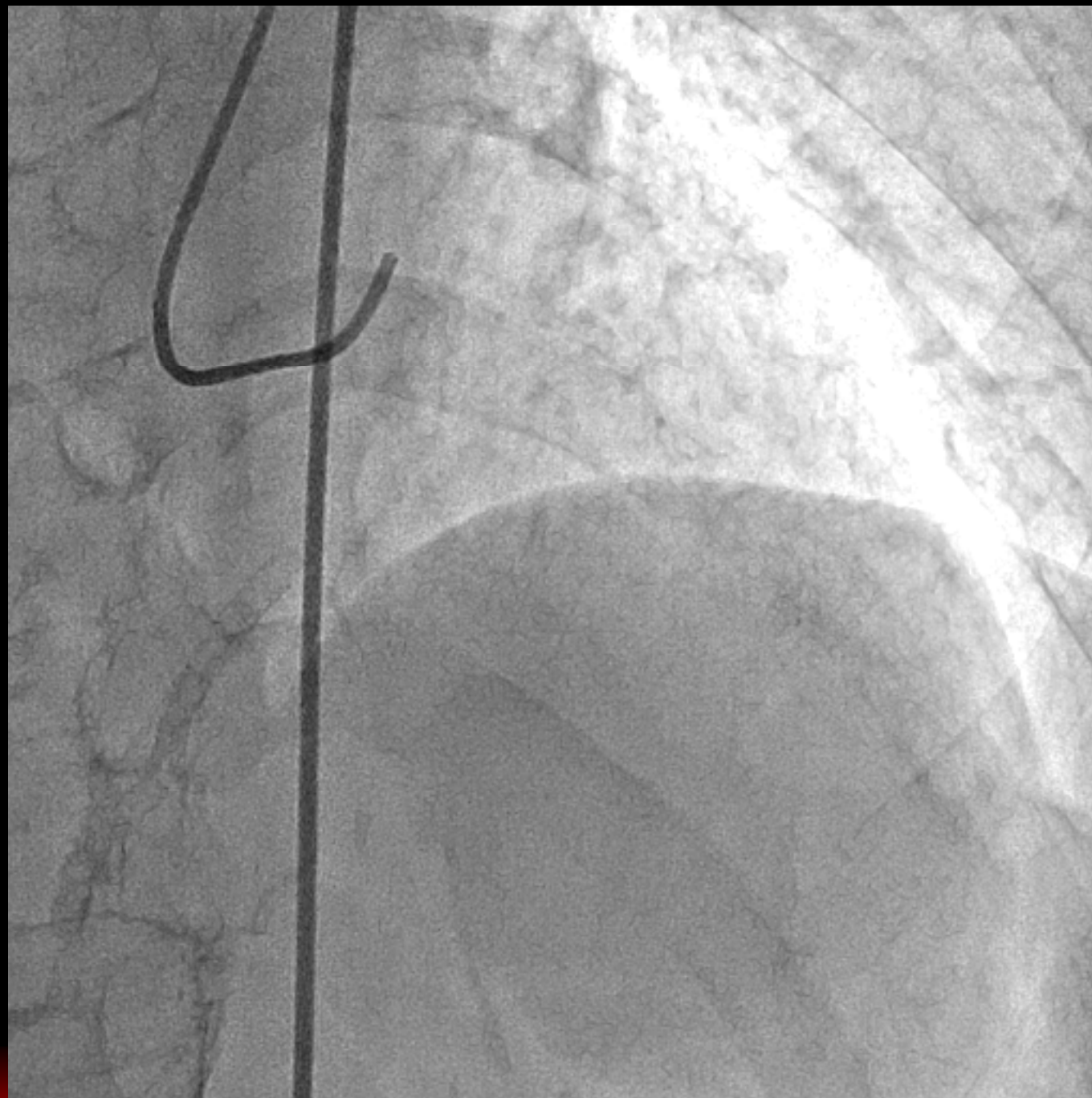
Diameter : 0.011 - 0.014"

Tip load : 3.5gf

Long hydrophilic coating provides smooth manipulation when used in conjunction with a support catheter such as Corsair



# Case



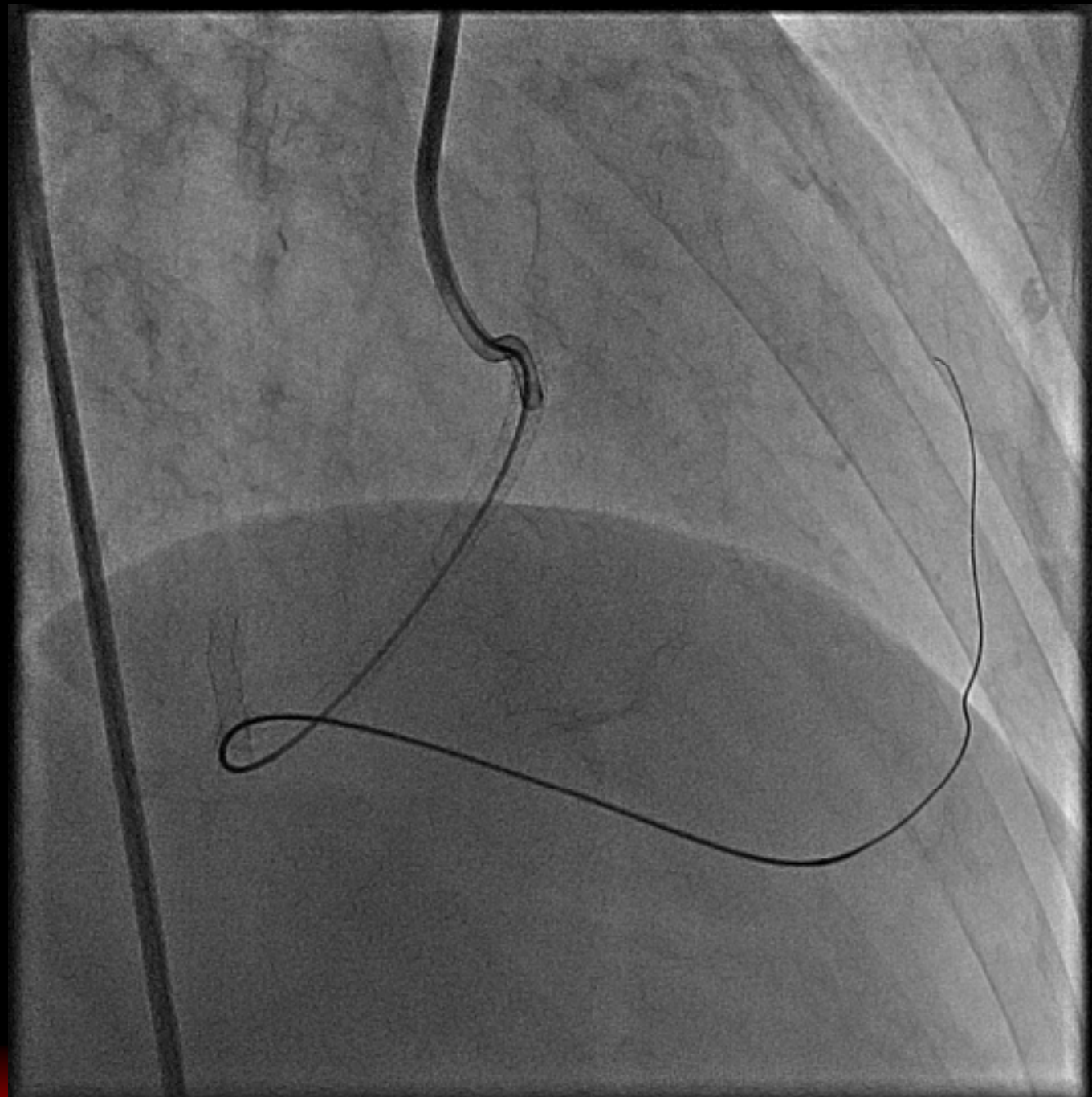


**RCA**





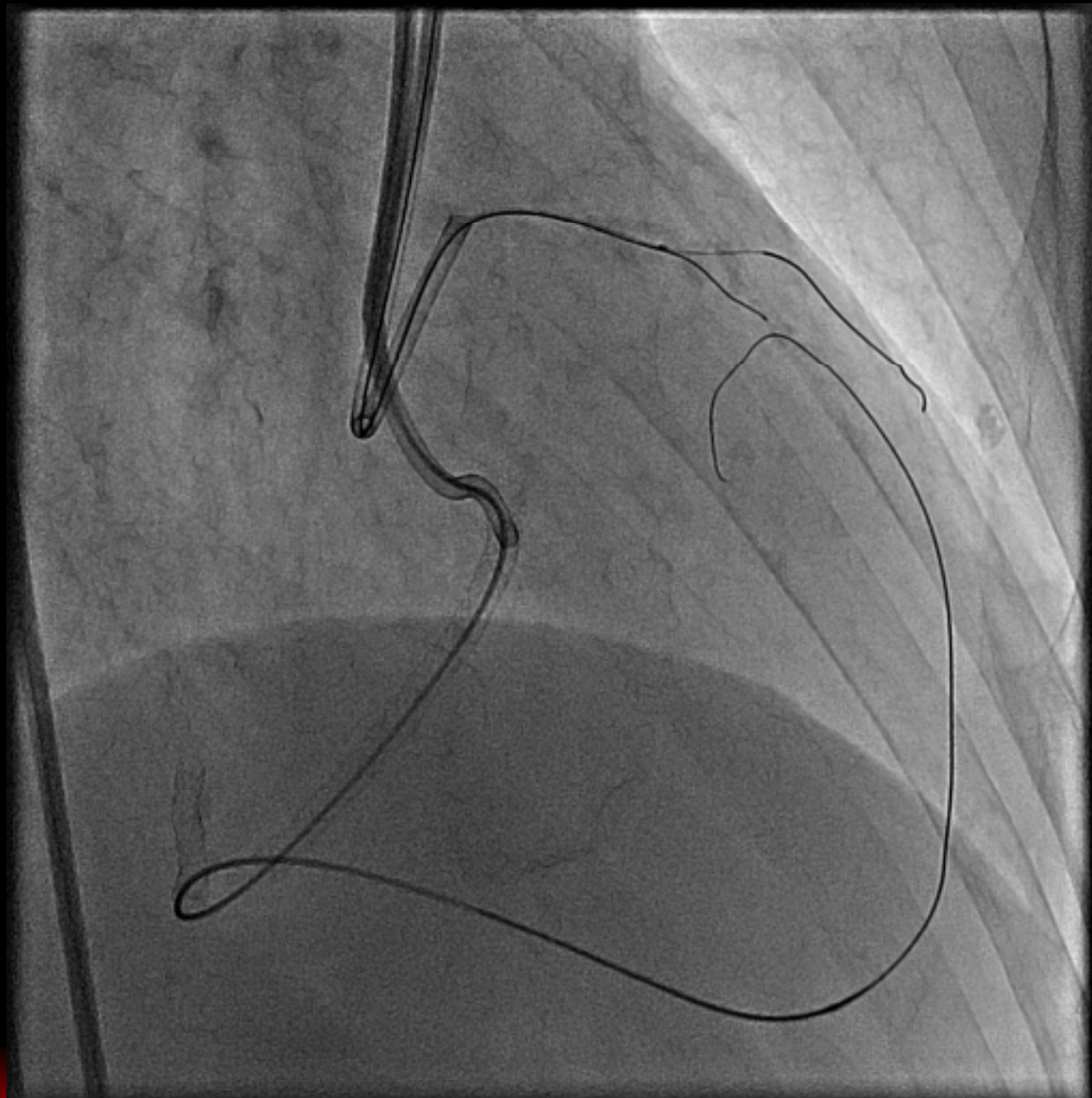
# Retrograde Approach



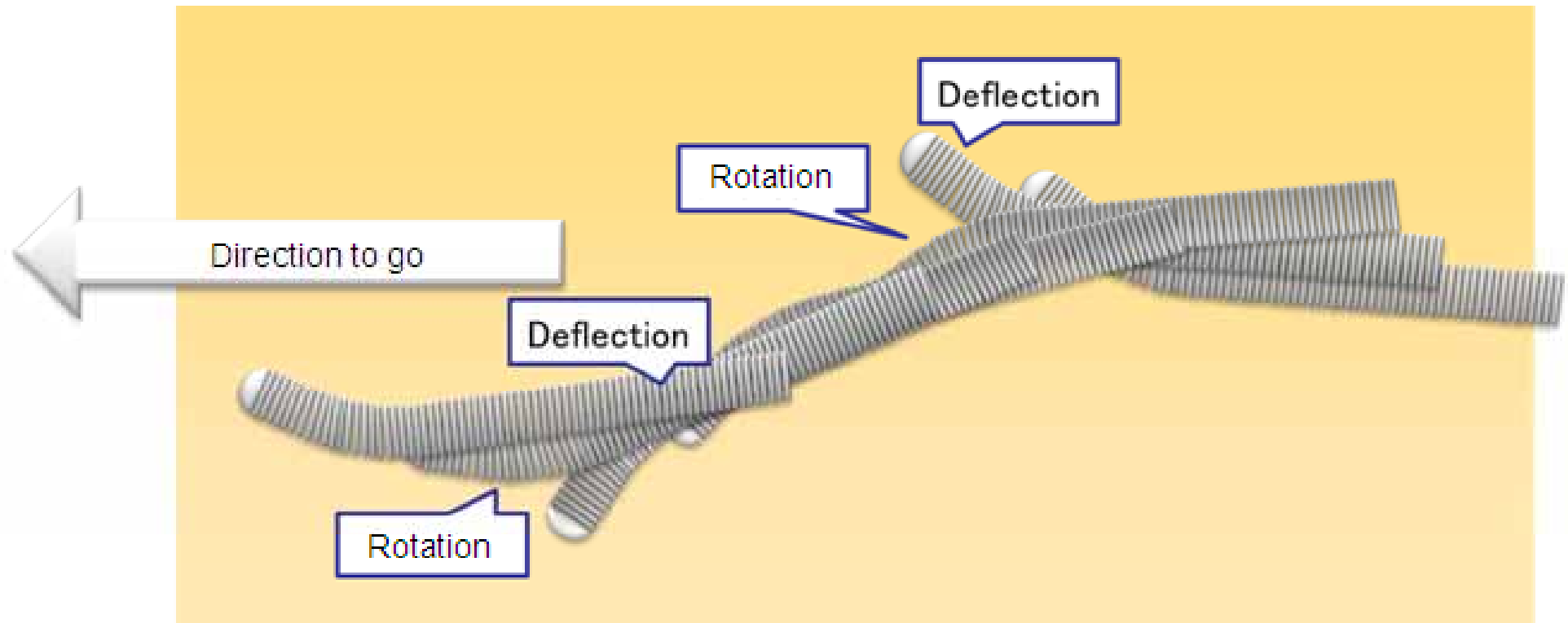




# Gaia 2<sup>nd</sup>



## Realization of Intentional Handling





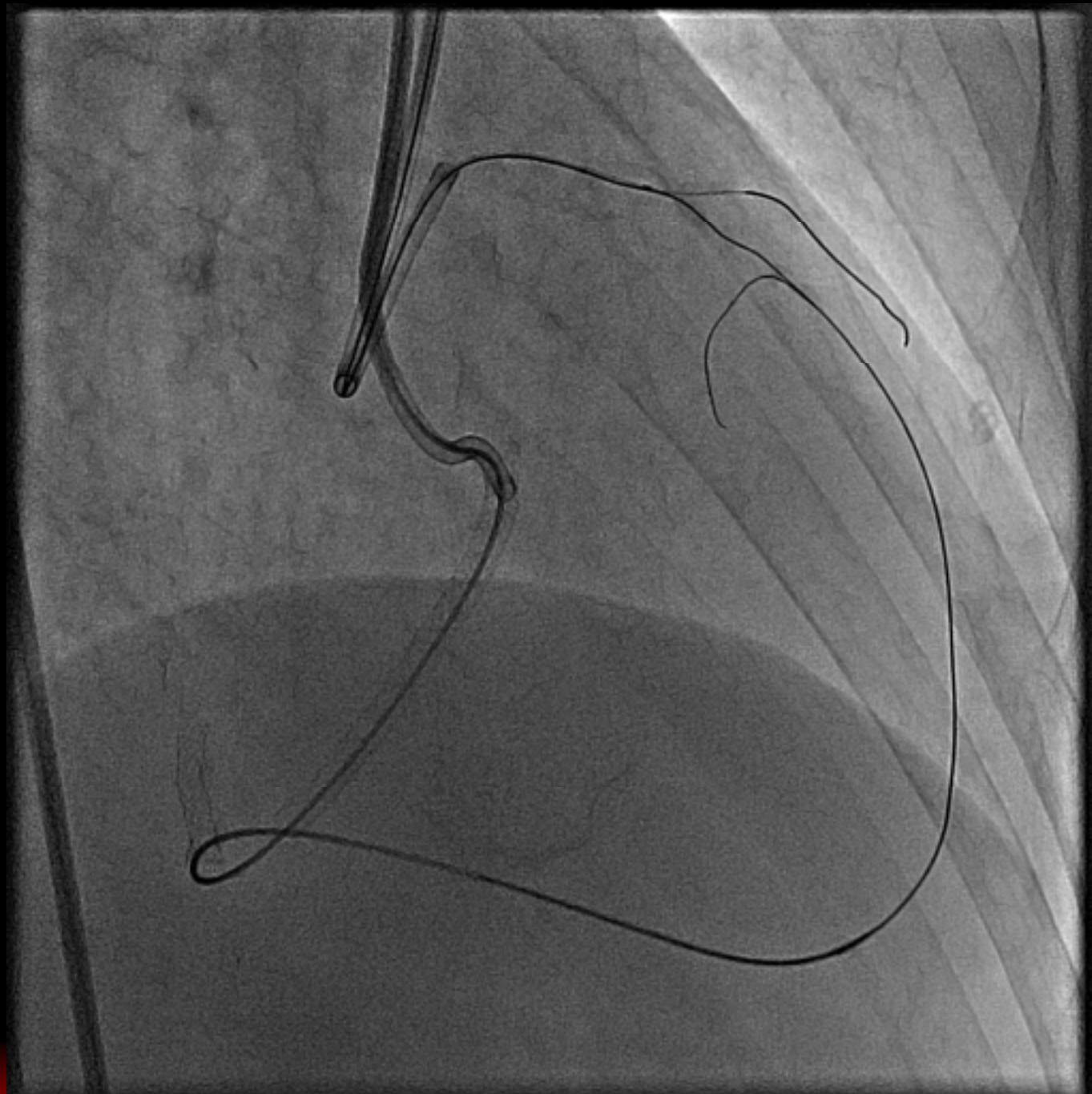


# Inadequate Wire Manipulation



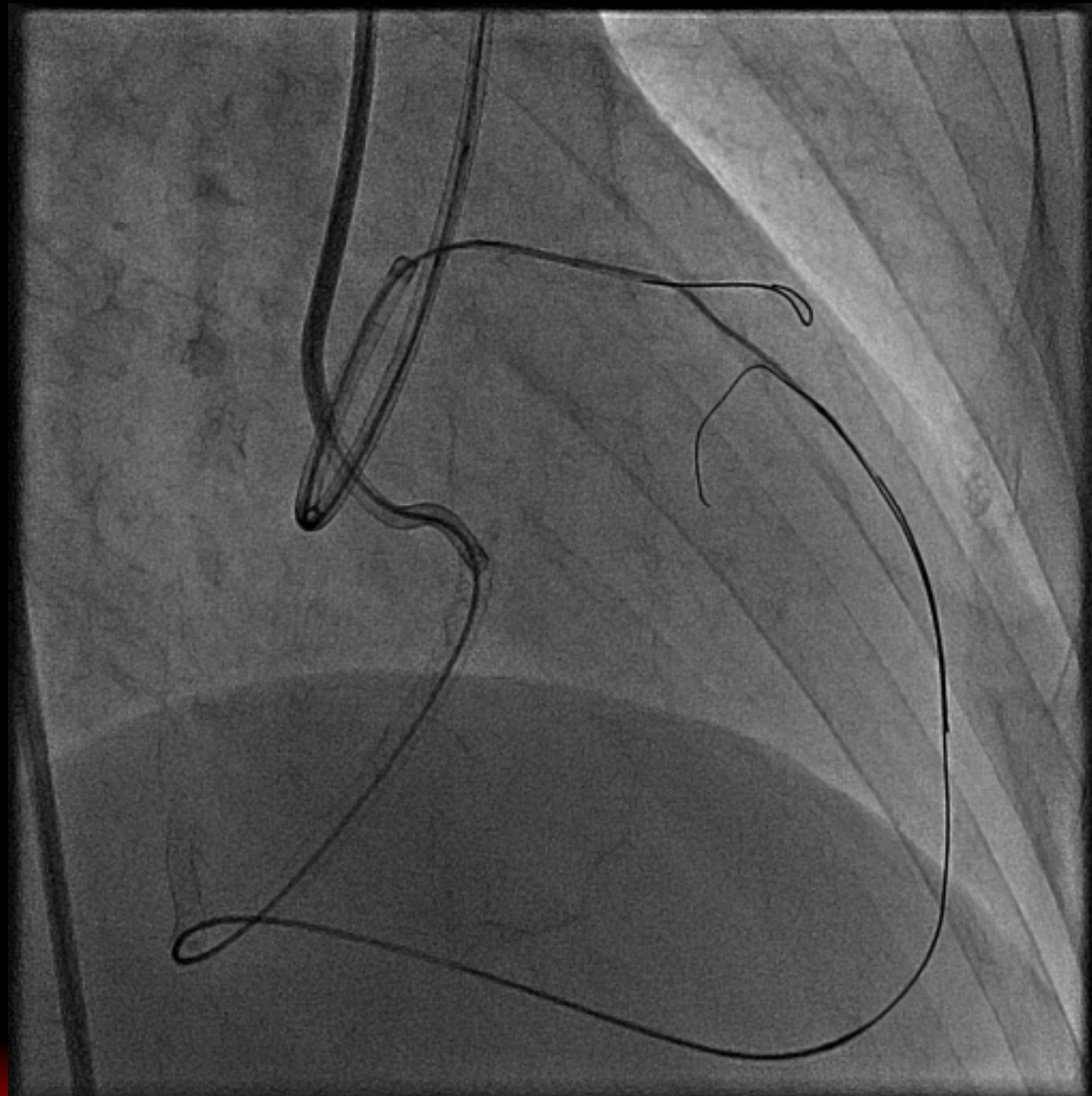


# Gaia 2<sup>nd</sup>





# Gaia 2<sup>nd</sup>





# GW Selection

- ✓ **1<sup>st</sup> Choice**                      **Fielder-XT**
- ✓ **Recent Closure**                **Fielder-FC**
- ✓ **Tortuous Channel**              **Wizard 78**

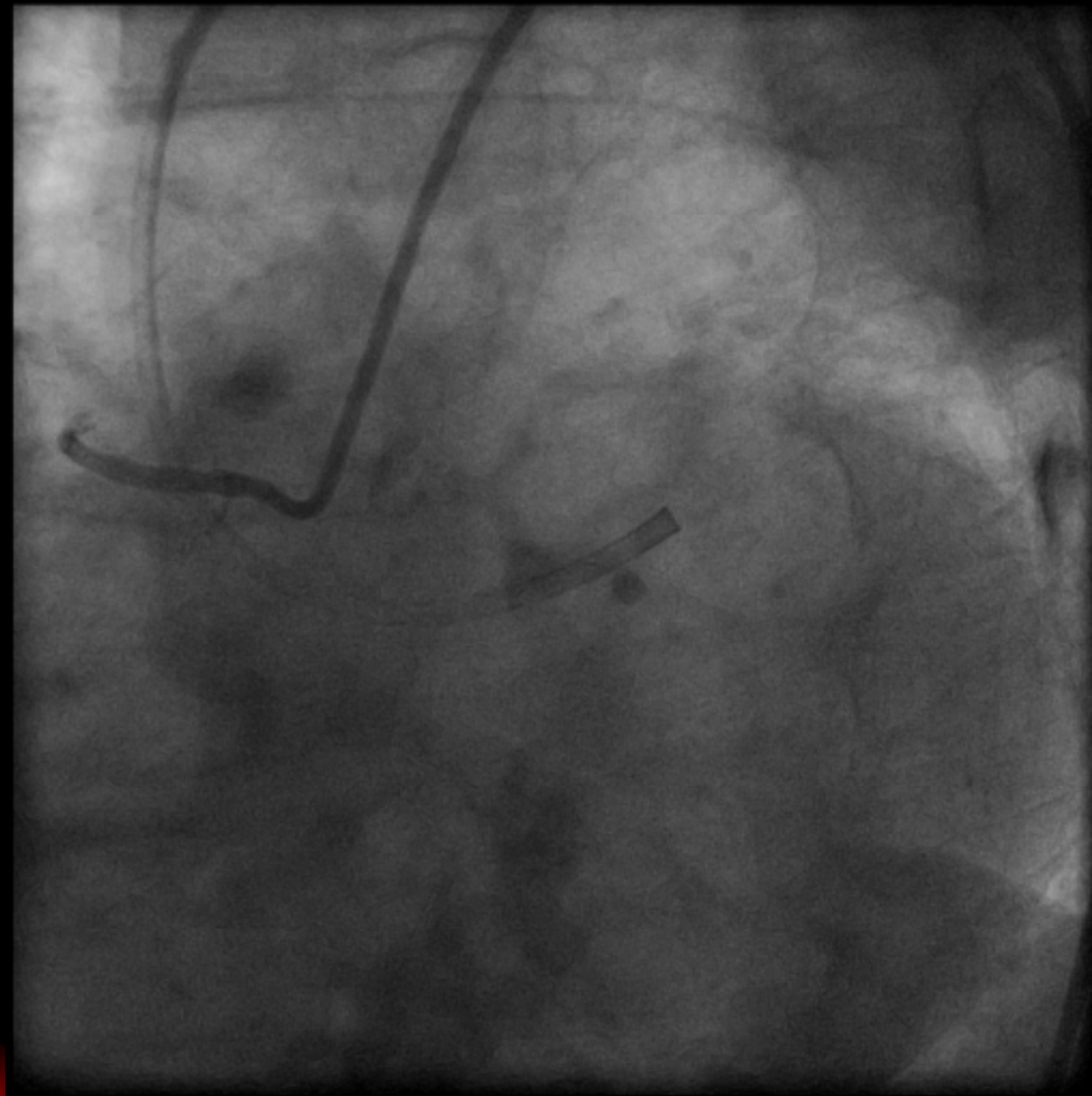
**Gaia, Abbyss**

**Confianza**



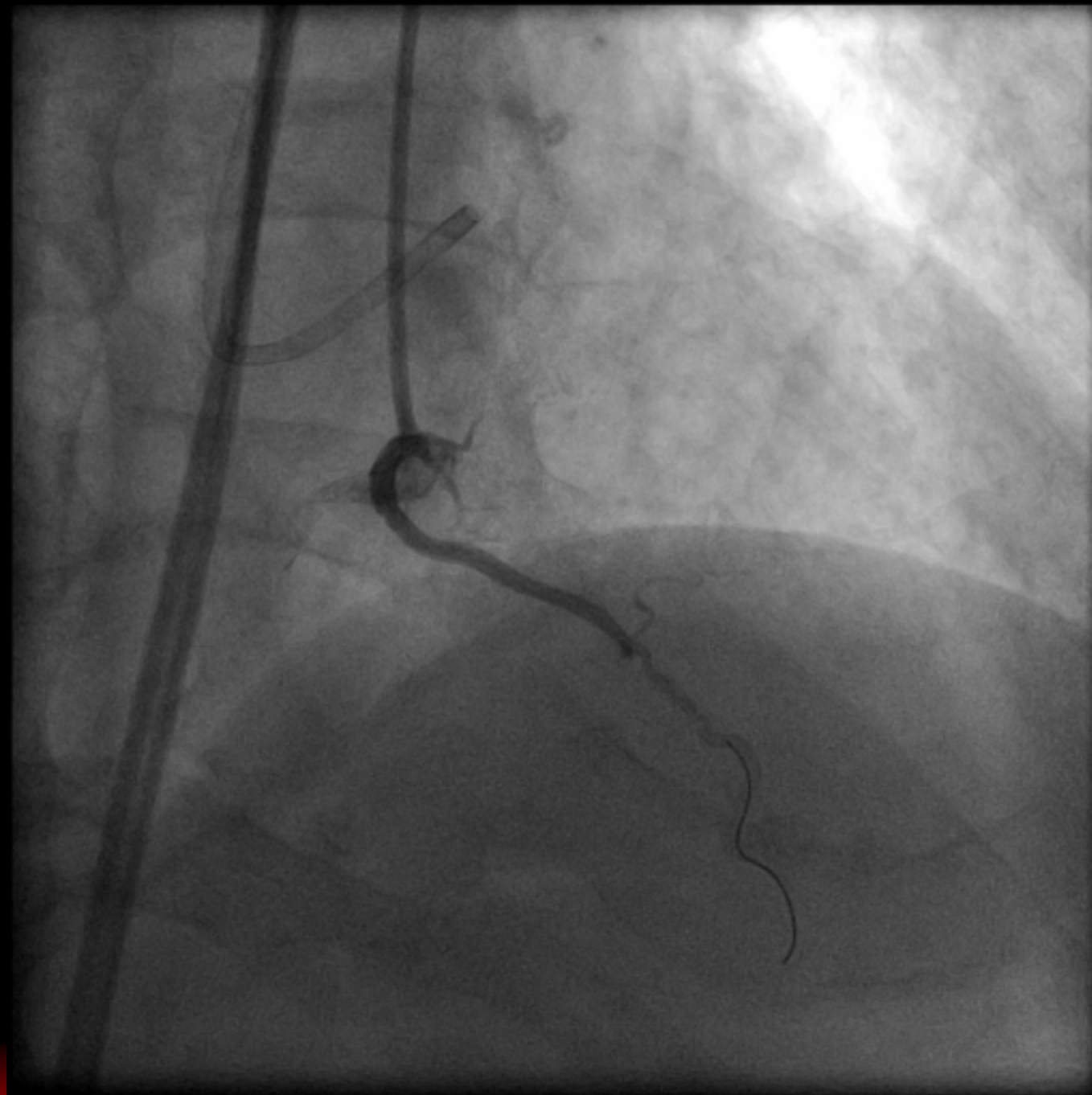


# Case LAD





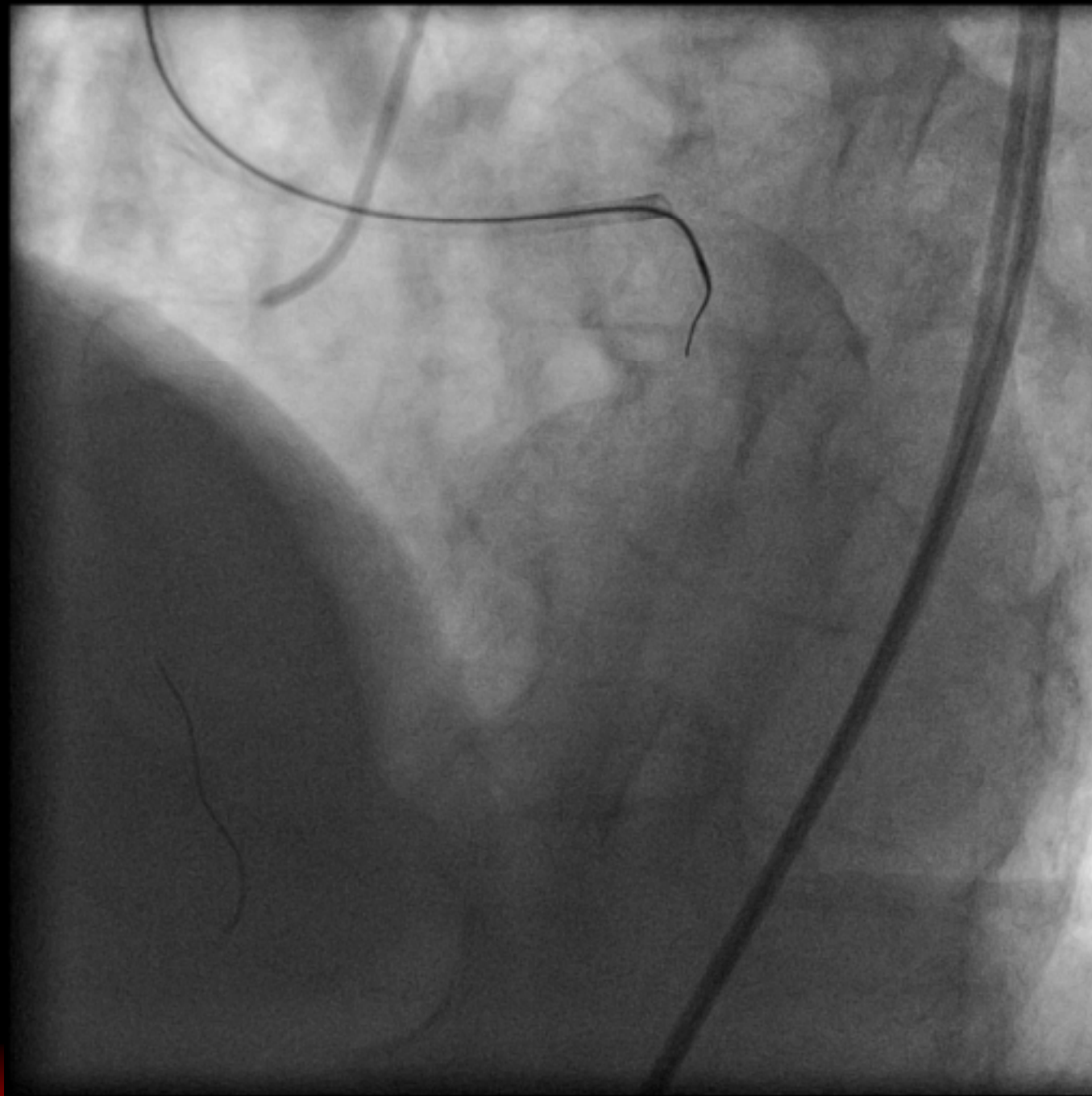
# RAO Cranial





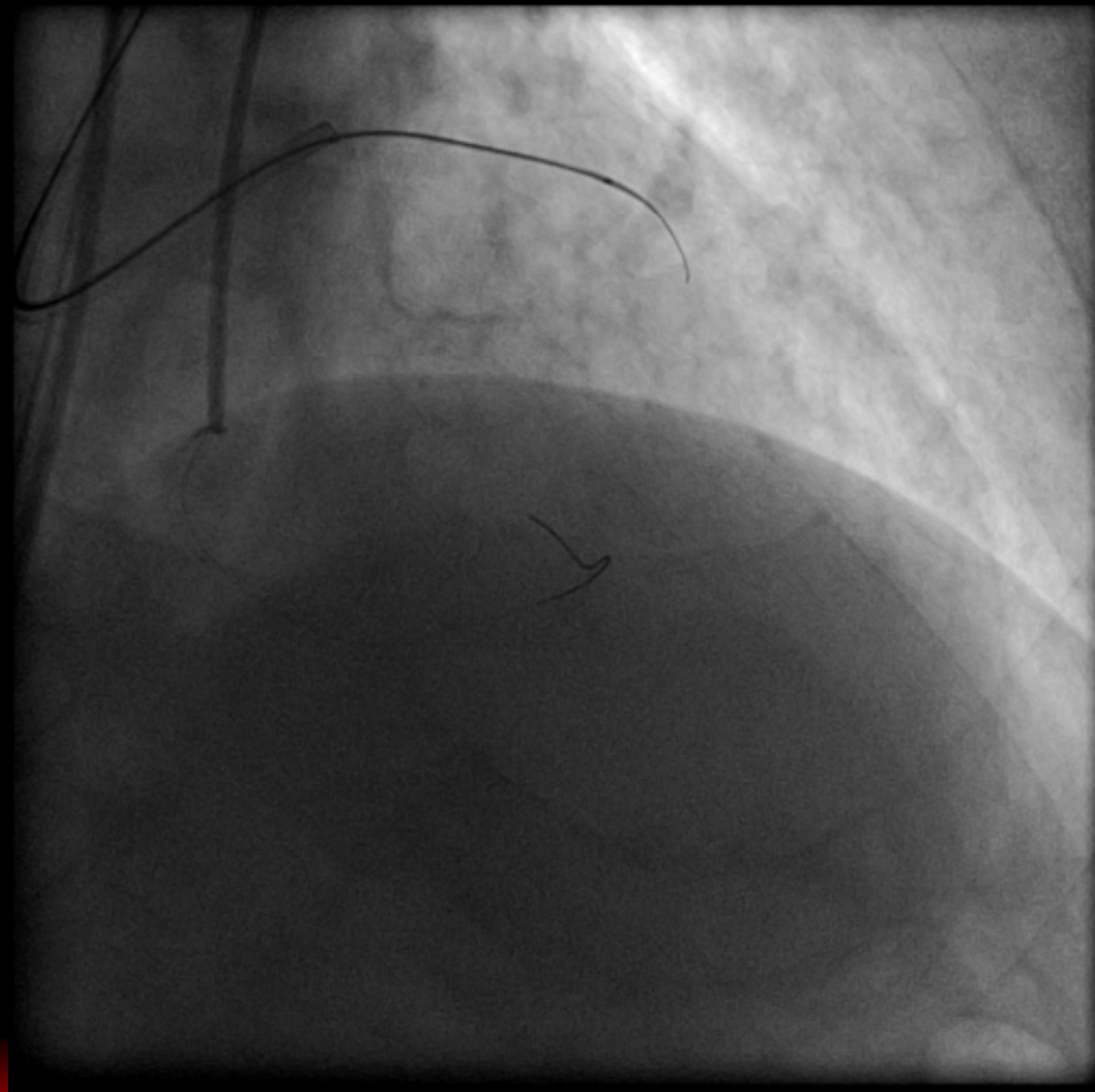


# PCI



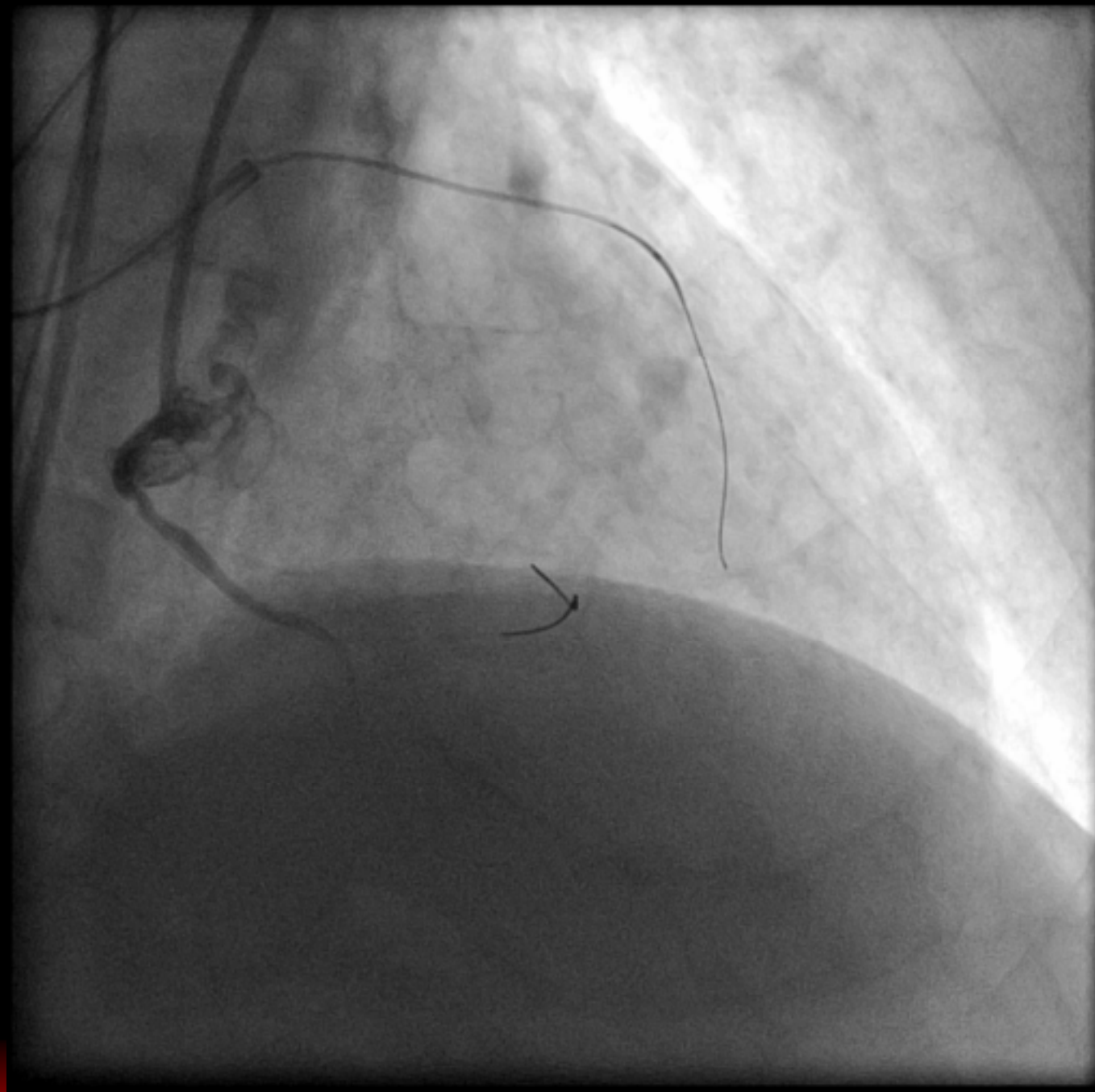


# Conquest Pro





# Fielder-XT





# Summary

- ✓ **Soft wire is the 1<sup>st</sup> choice in order to do micro channel or loose tissue tracking.**
- ✓ **Next step is to select wires those have better torque ability, such as Gaia.**
- ✓ **Next choice would be Confianza.**
- ✓ **Not only step-up but also step-down strategy is often helpful.**