

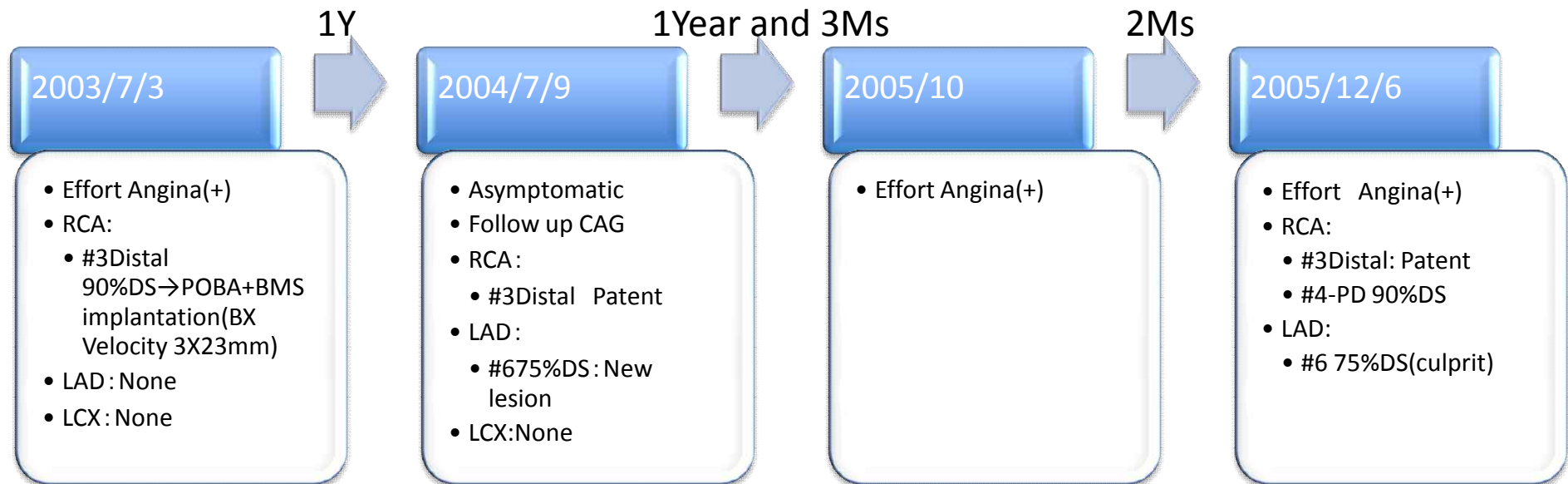
# **Huge Coronary Artery Aneurysm Formation After DES implantation**

Hoshi General Hospital Division of  
Clinical Engineer  
Nobuyuki Soeda

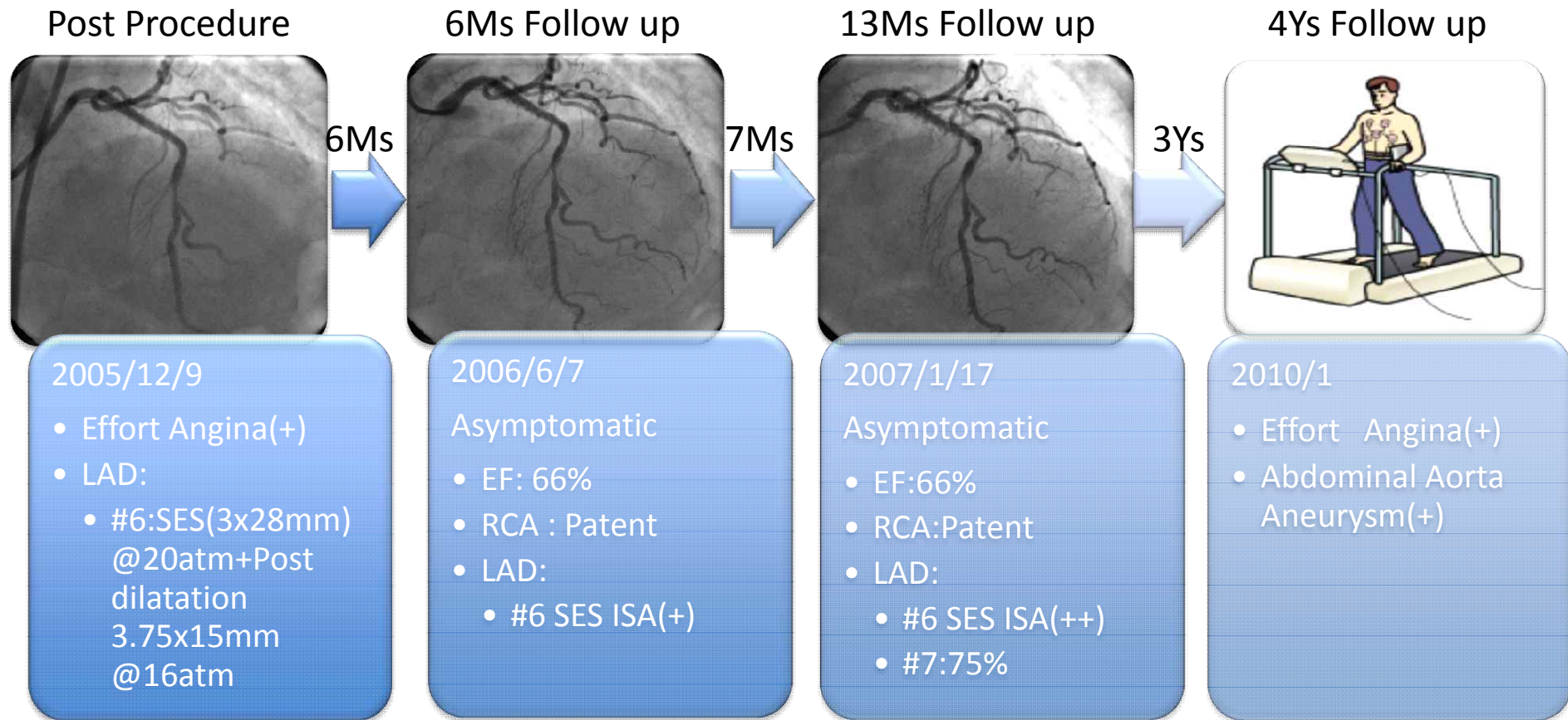
# Patient Background

- Age: 76y
- Sex: Female
- Risk Factor :  
None
- Diagnosis :  
Angina Pectoris
- Concomitant Disease:  
Abdominal Aorta Aneurysm

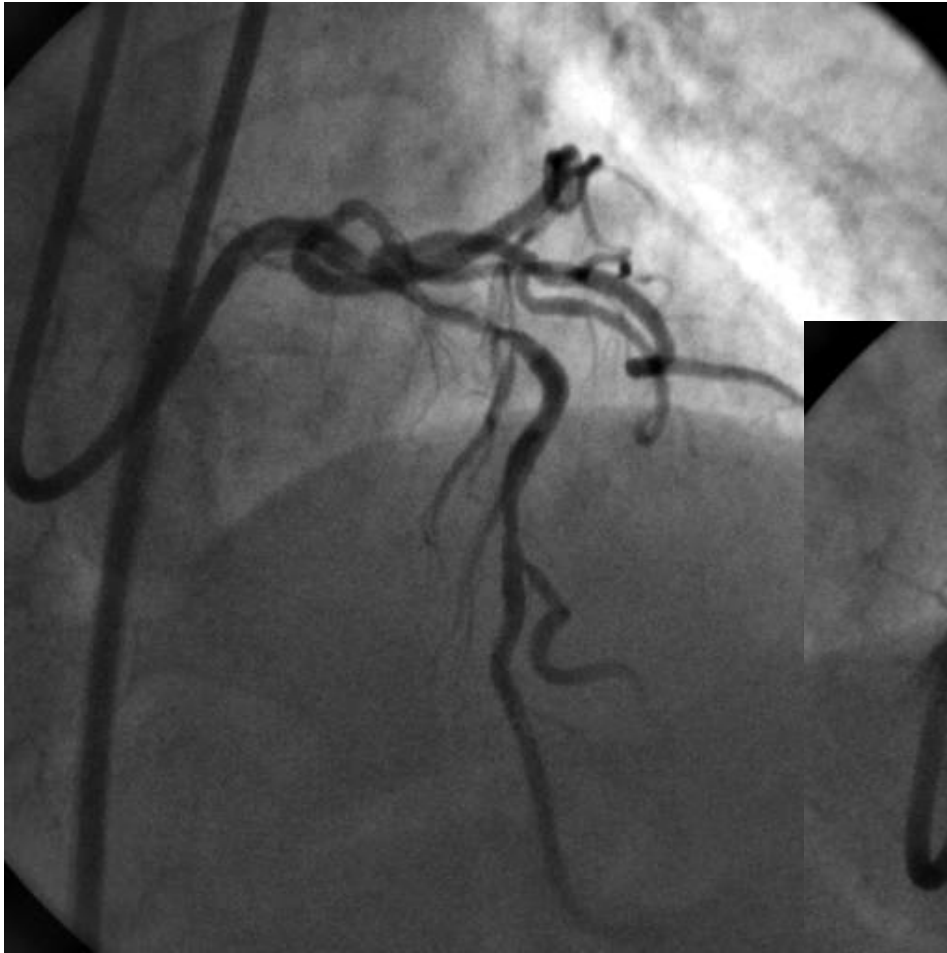
# Treatment History before SES implantation



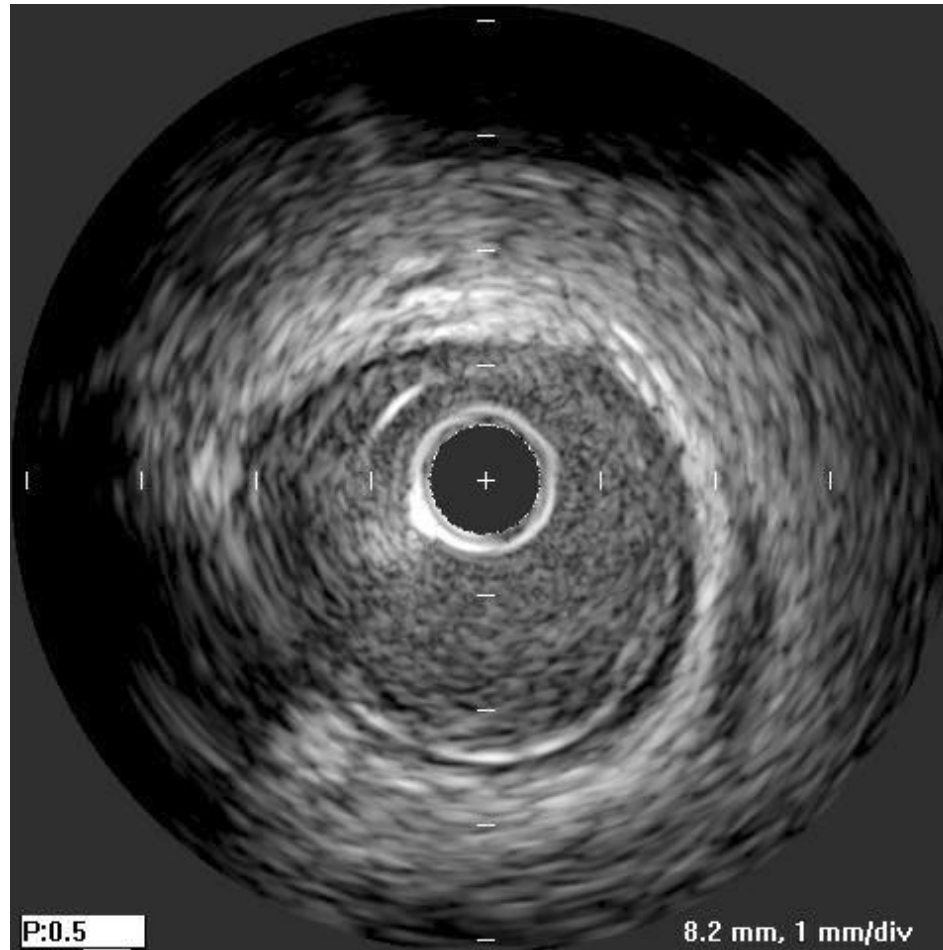
# SES Procedure and Follow Up Investigation



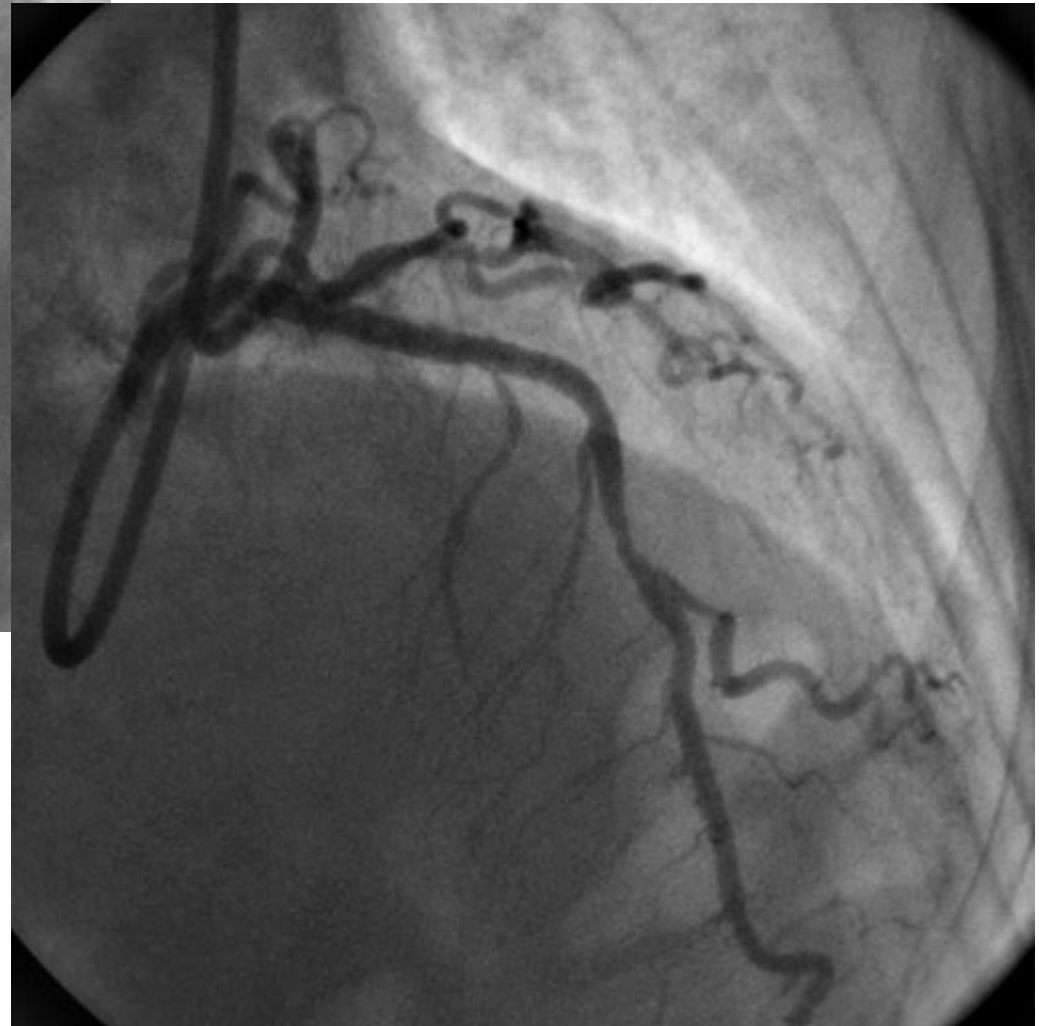
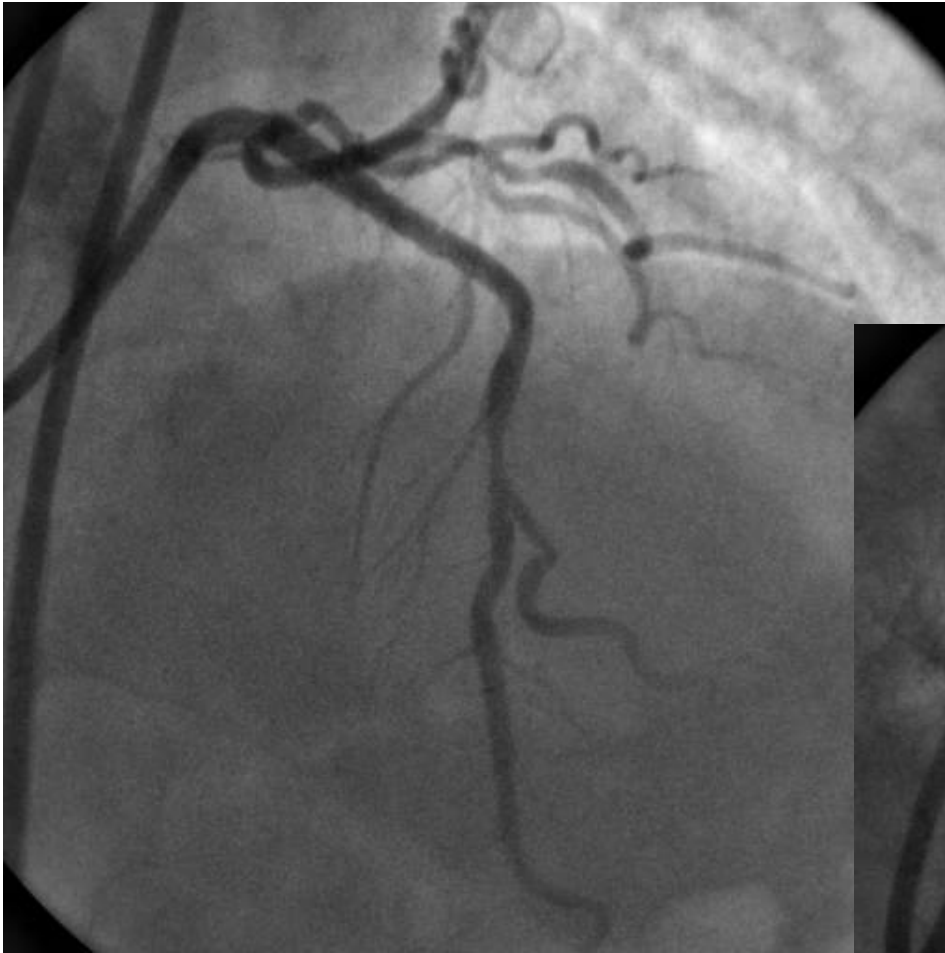
Control Angiography  
2005/12/6



# IVUS Image-control



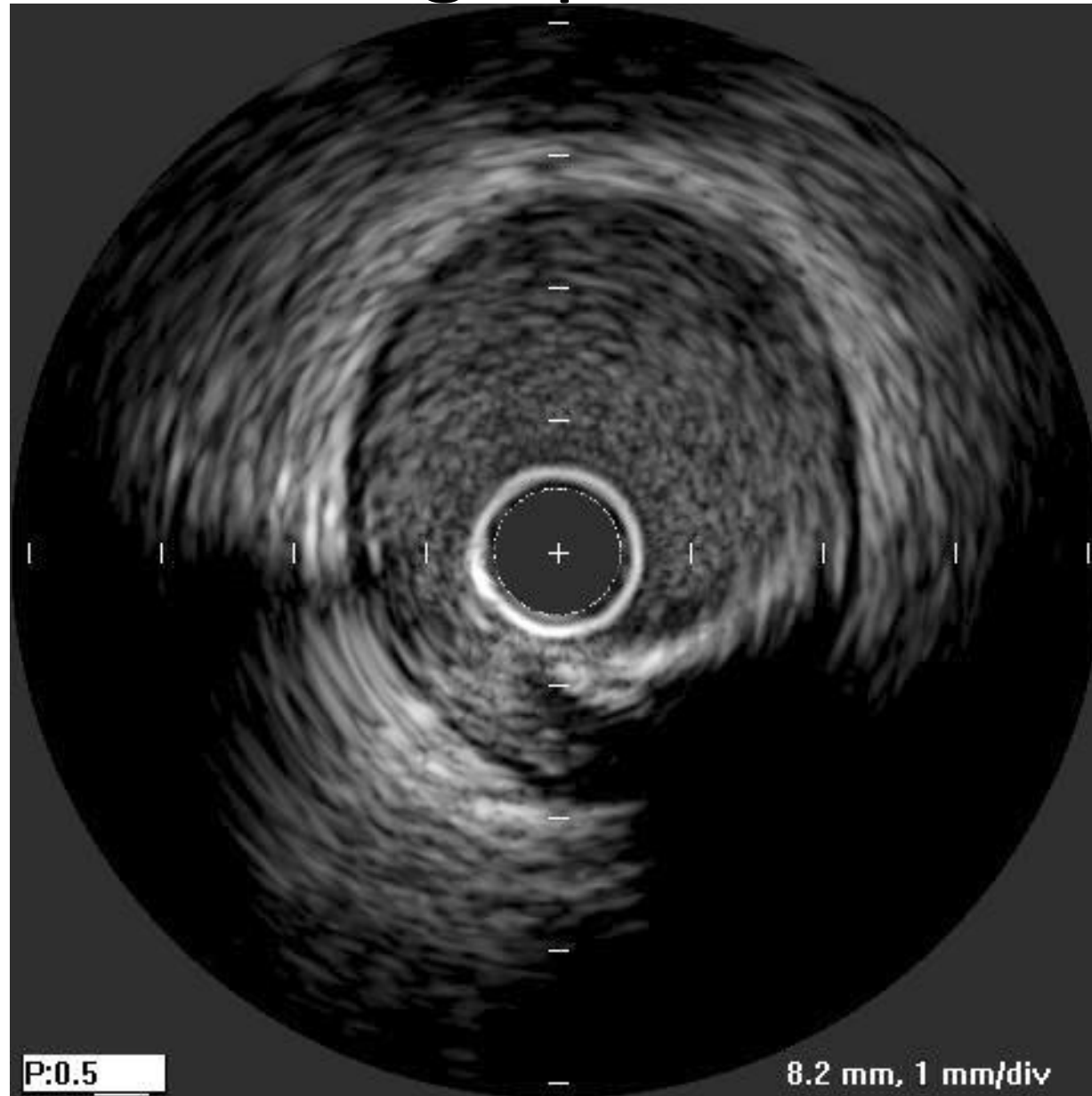
# Post SES implantation



[Cypher3.0-28mm20atm](#)

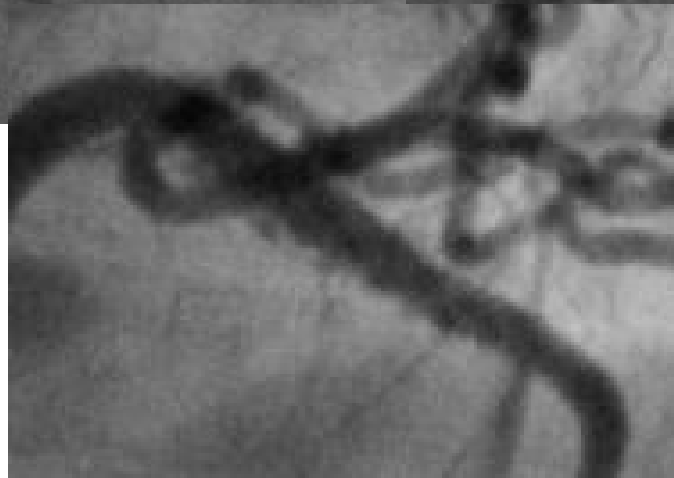
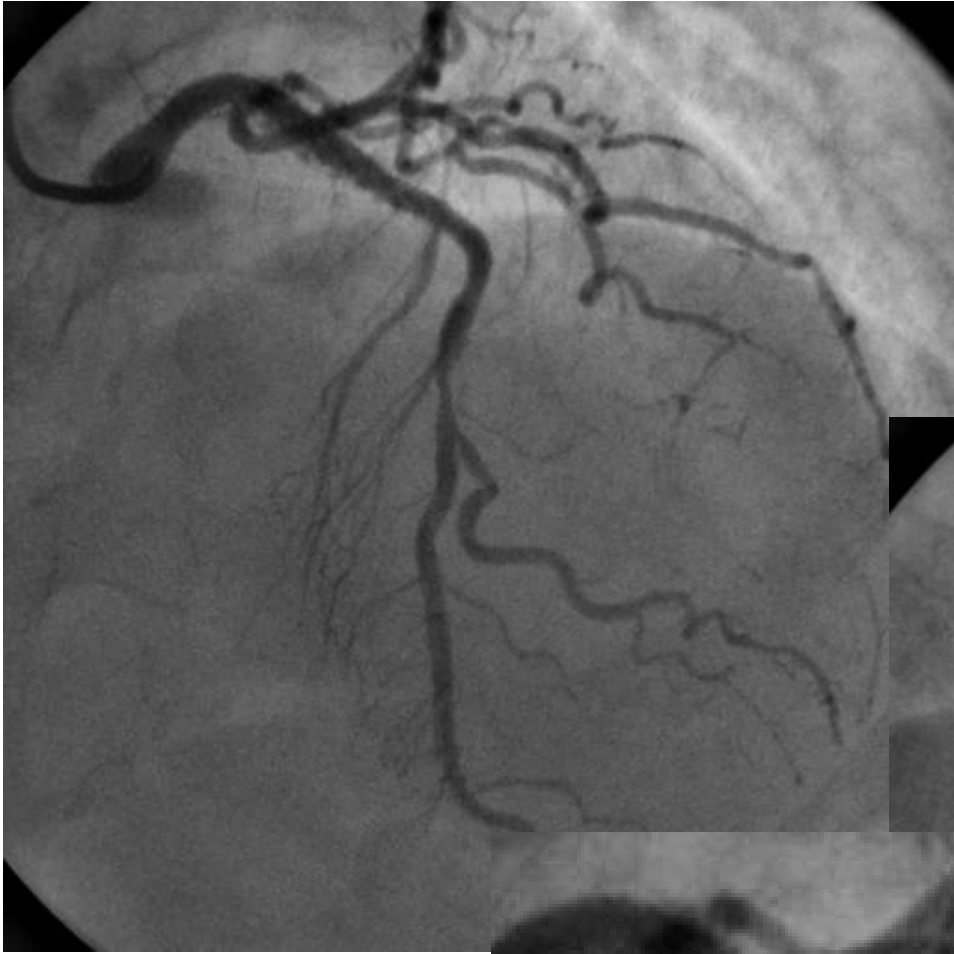
Postdilatation-3.75mm16atm

# IVUS Image-postSTENT

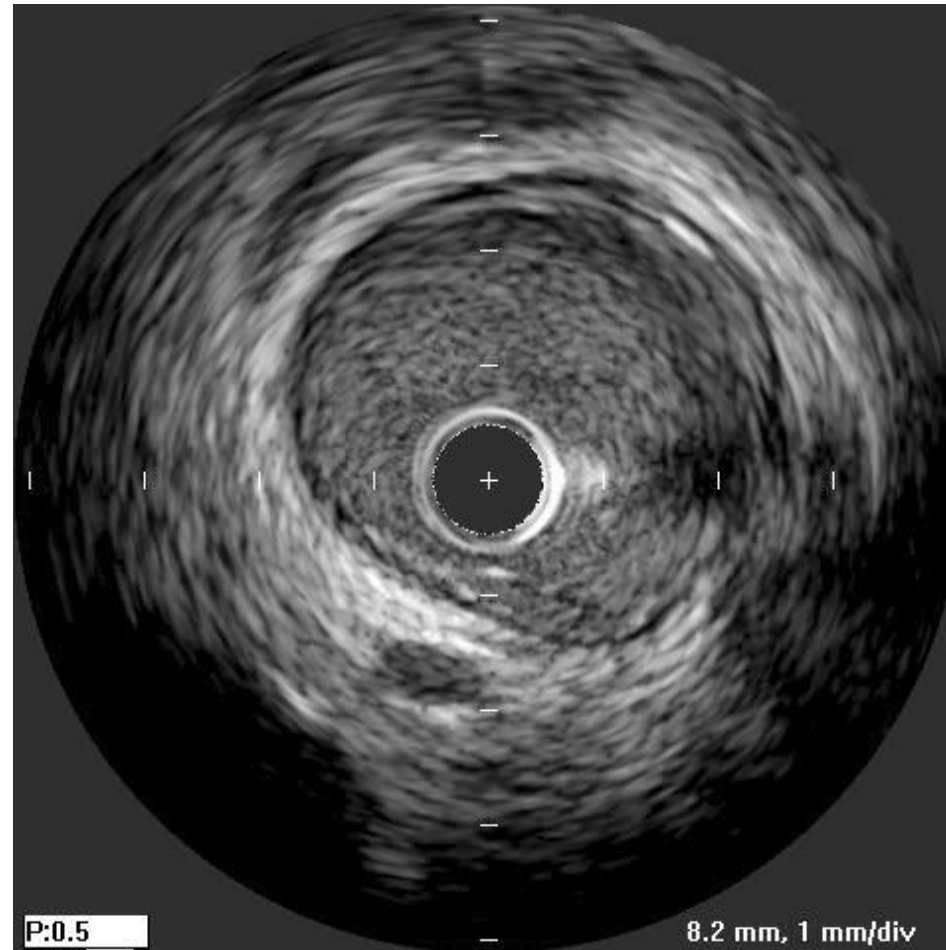




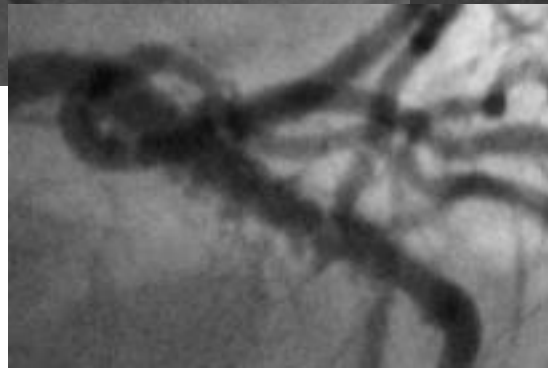
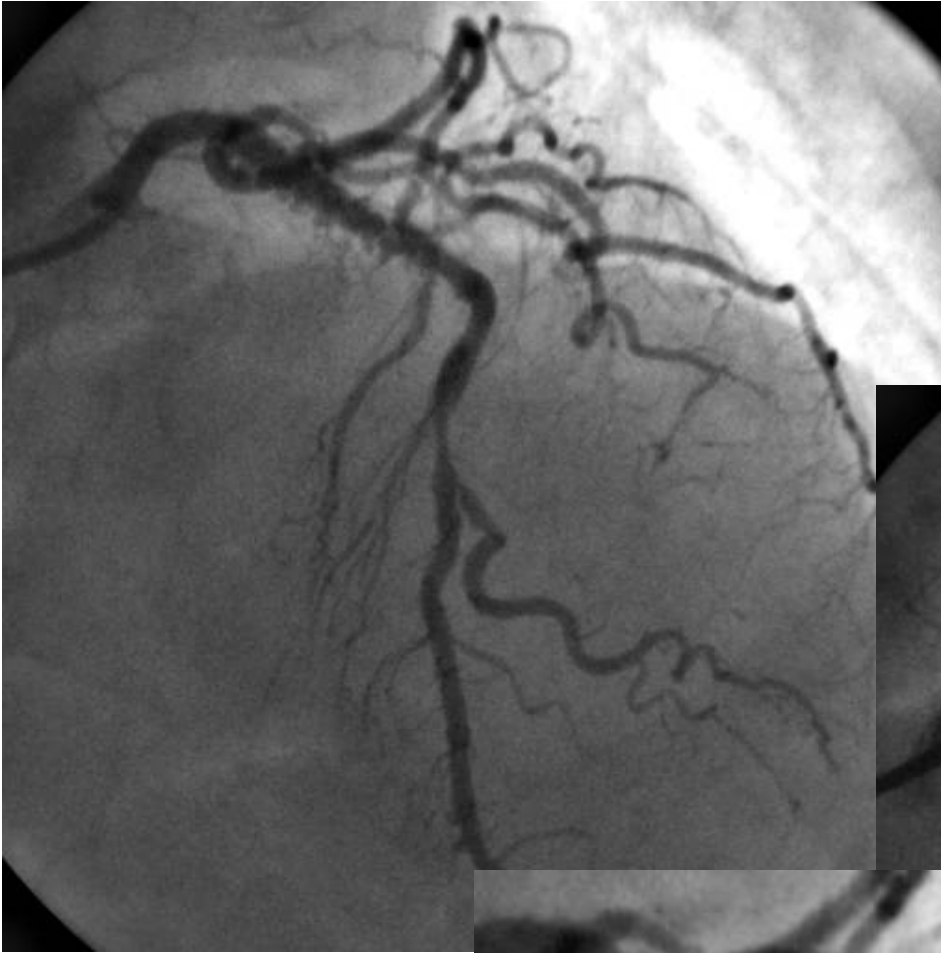
F/U Angiography  
at 6Ms  
2006/6/7



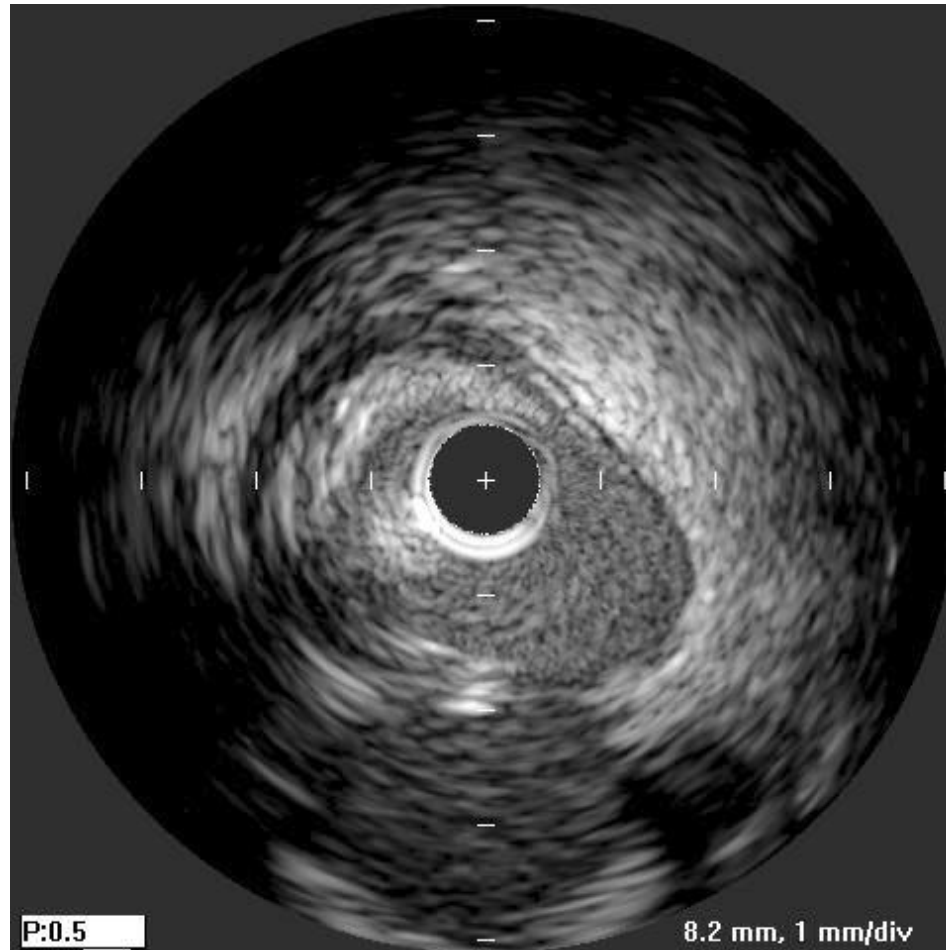
# IVUS Image-6monthsLater 2006/6/7



F/U Angiography  
at 13Ms  
2007/1/17



# IVUS Image-13monthsLater 2007/1/17

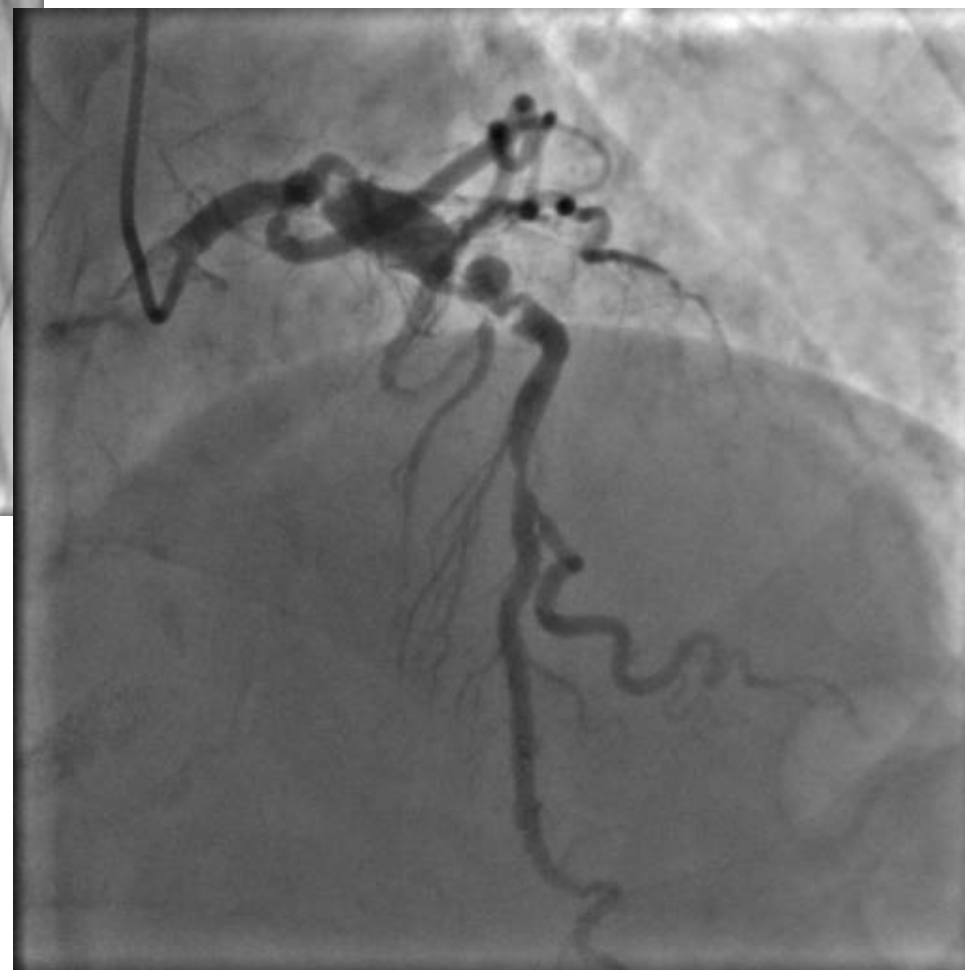
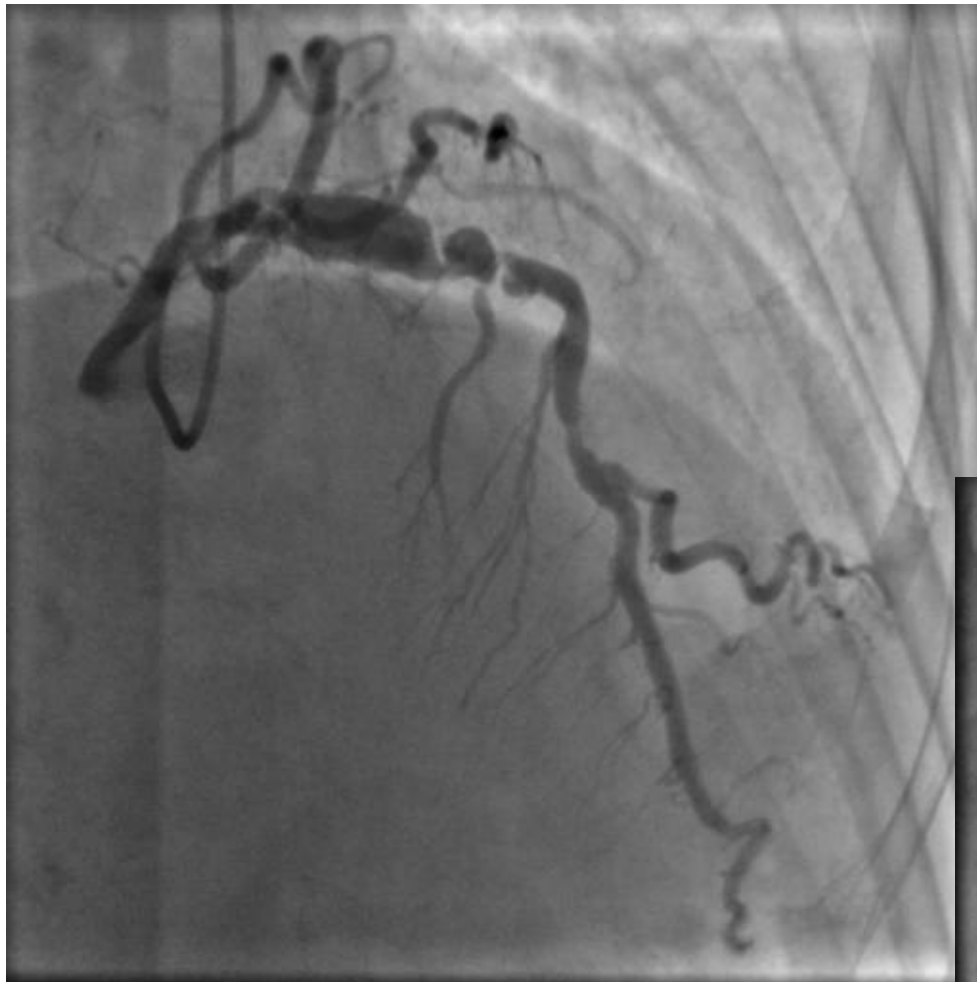




F/U Angiography  
at 4 Ys  
2010/2/24



F/U Angiography  
at 4 Ys  
2010/2/24



IVUS-No-Pass

# Summary

- Mild Late- acquired Incomplete Stent Apposition was observed at 6Ms after SES implantation. Unfortunately, it progressed and formed a big coronary artery aneurysm at four years.
- Vessel Remodeling with hollow between and outside of stent strut was observed in the segment of SES.
- The mechanism of vessel remodeling with hollow and aneurysm formation after DES implantation remain unclear.