



阜外心血管病医院

# Nuring of no-reflow during PCI

FuWai Hospital  
Cath Lab  
Yaoxia Zhang

COMPANY LOGO



阜外心血管病医院

## What is no-reflow

No-reflow is the absence of myocardial perfusion after PCI.

Representation of no-reflow:

reduced coronary blood flow (<TIMI2),  
no mechanical obstruction as remaining stenosis, dissection, spasm or thrombus



# 阜外心血管病医院

Mechanism  
of  
No-reflow

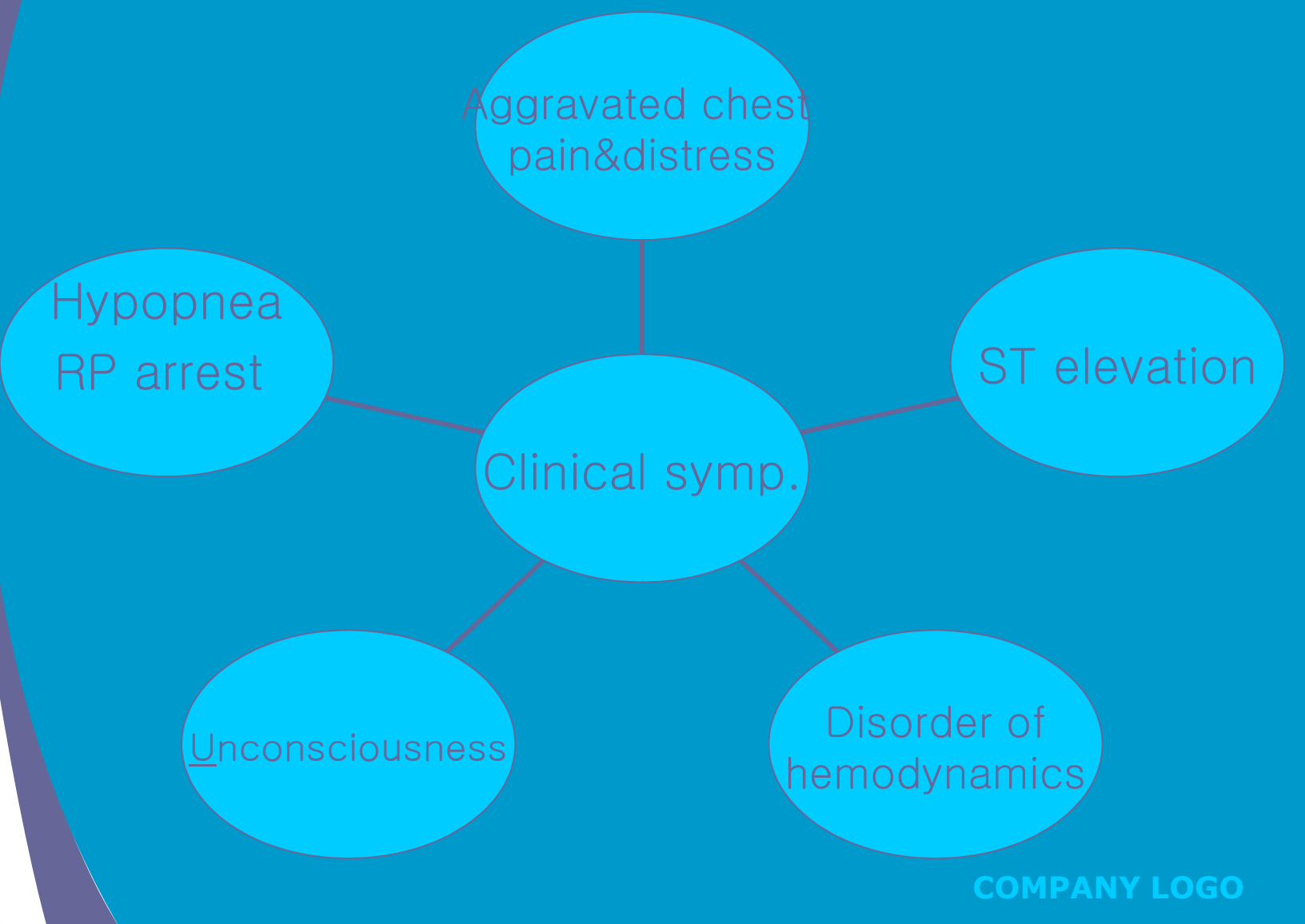
Damage of  
micro-vessel  
reperfusion  
injury

Micro-vessel  
blockage

Mechanical  
oppression



# 阜外心血管病医院





阜外心血管病医院

## Nursing Key points

mental  
nursing

General  
Nursing  
steps

EMT  
instrument

medication

COMPANY LOGO



# 阜外心血管病医院



- Nitroglycerin: 100~200  $\mu$ g bolus, IC
- Adenosine: 10~20  $\mu$ g bolus, IC
- Herbesser/Diltiazem:
  - 50~100  $\mu$ g bolus, IC
- Sodium Nitroprusside:
  - 50~100  $\mu$ g bolus, IC
- Verapamil, nicorandil, Anisodamine, Tirofiban
- Dopamine 5~10mg, Epinephrine 0.5~1mg, use repeatedly if required
- Atropine 0.5~1.0 mg bolus, IV
- Morphine 3~10mg IV



# 阜外心血管病医院

- 65y Male
- CAD  
effort +spontaneous a  
ngina
- Effort angina 20y,exa  
cerbat 1y
- Hypertension 10y  
hyperlipemia 3y
- HR 82bpm  
AO 134/85mmHg

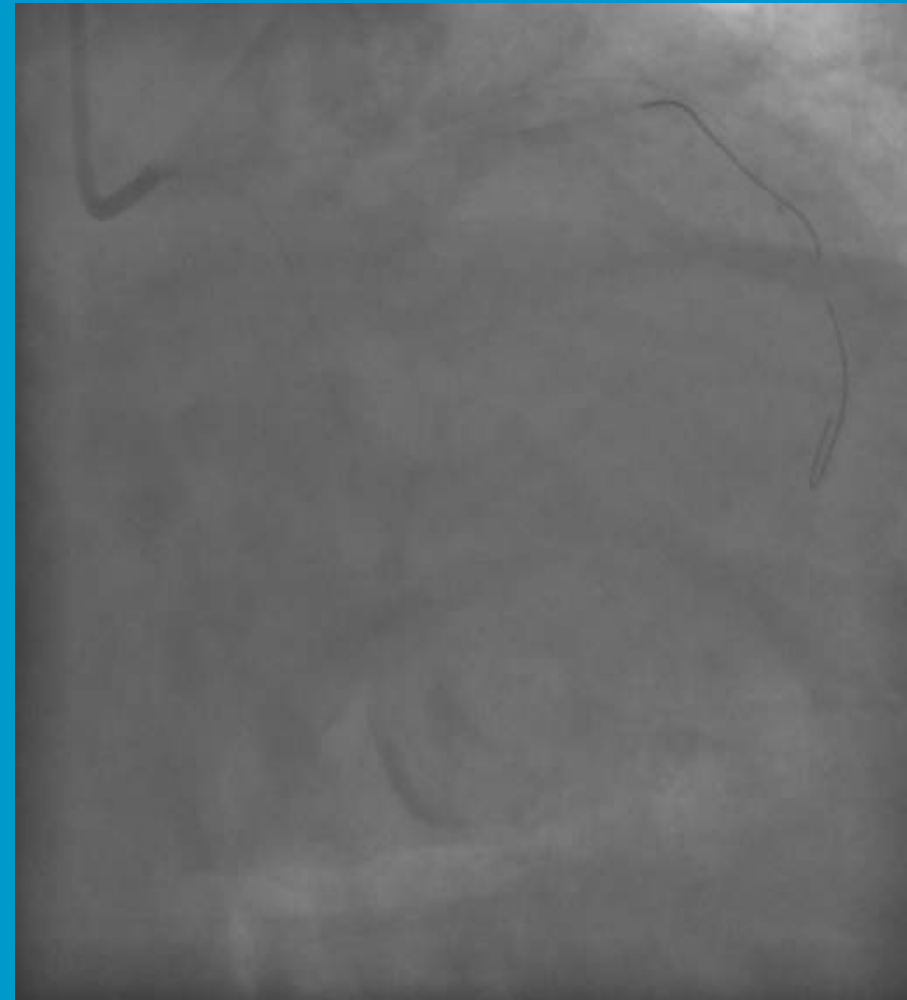


COMPANY LOGO



# 阜外心血管病医院

- 9:34 HR 72bpm  
AO 65/43mmHg  
chest pain  
oxygen inhale,  
Dopamine+Atropine IV
- 9 : 38 HR 58bpm  
AO 68/45mmHg  
high-flow oxygen via ane  
sthetic machine  
Dopamine+Atropine bolu  
s+pumping IV







# 阜外心血管病医院

- 9 : 50 unconsciousness  
CPR,IABP
- 9 : 54 tracheal intubation p  
ositive airway pressure via  
anesthetic machine  
Repeated Dopamine+Atropine  
+Epinephrine+Sodium Bica  
rbonate
- 10 : 48 VF  
300 J Asynchronous defibrill  
ation,2 times  
Amiodarone IV

Time of death 11:15

