

Experiences of Tazuna balloon catheter at various situation in PCI

Shingo Hosogi

Y. Yoshimura, Y. Fukuoka, H. Matsumi,
T. Miyaji, S. Sahara, Y. Ohara, M. Nishimoto,
K. Yamamoto

Kochi Health Sciences Center

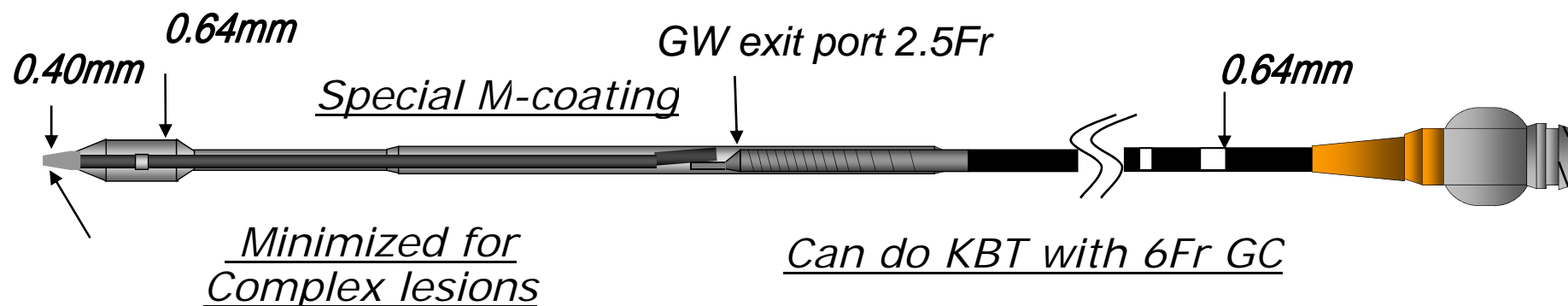
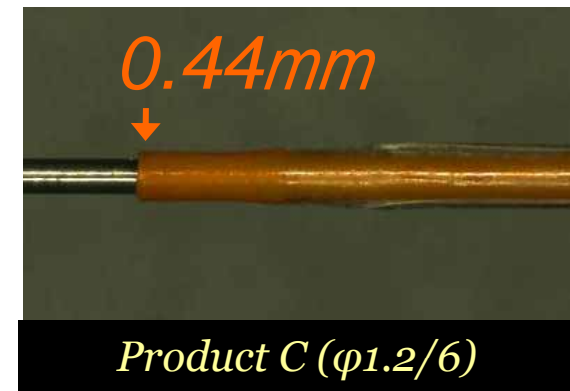
Department of Cardiovascular medicine



Kochi Health Sciences Center

Tazuna Balloon Catheter

- Semi-compliance balloon with good crossability
- Available from summer 2009 in Japan
- Well used even now



Case1

Tazuna for Pre-dilatation

- 78y.o. male
- Effort angina pectoris
- No asynergy, and normal LV function

- CAG: LAD#7 50% stenosis(aneurysm+)
 LCX#13 CTO
 (with bridging collateral or micro-channel)
 LCX#12 75% stenosis

Case1

LCX#13 CTO, LCX12 75% stenosis



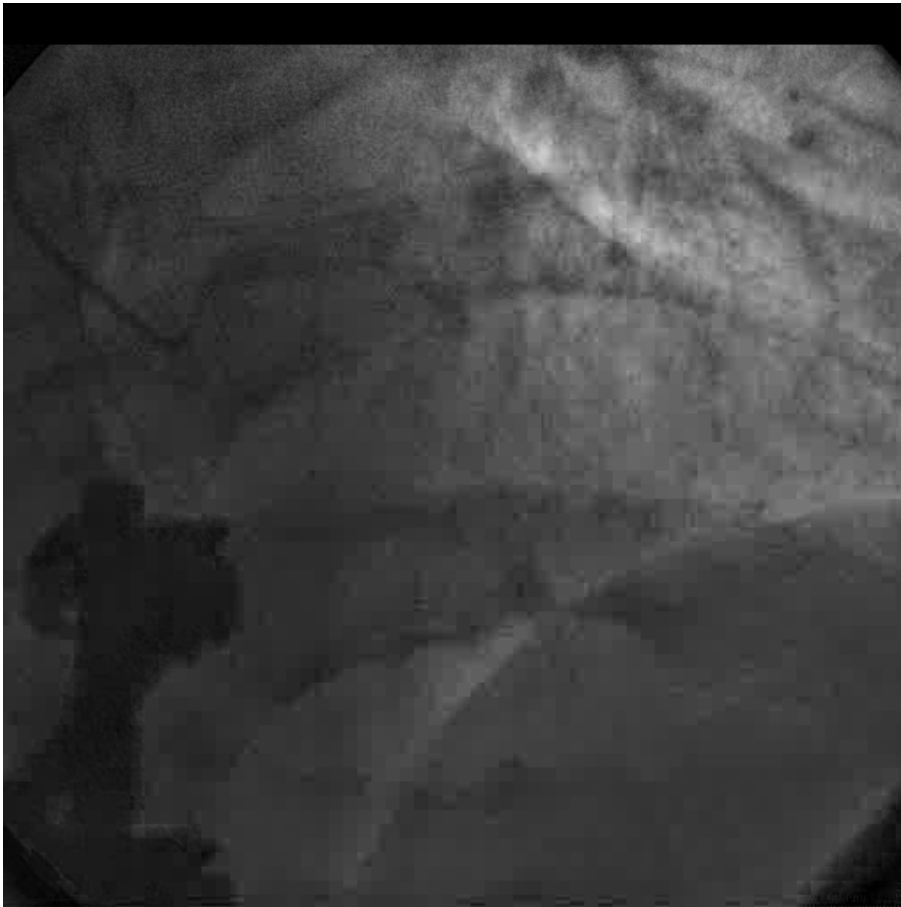
Case1

LCX#13 CTO, LCX12 75% stenosis



Case1

*AP cranial view: LAD#7 50%
+ aneurysm*



*LAO view: intact RCA
Collateral vessel to LCX*



Case1

SYSTEM

*Approach : Bi. Radial a.
(reject TFI)*

GC:

Raunchar EBU3.5 6F

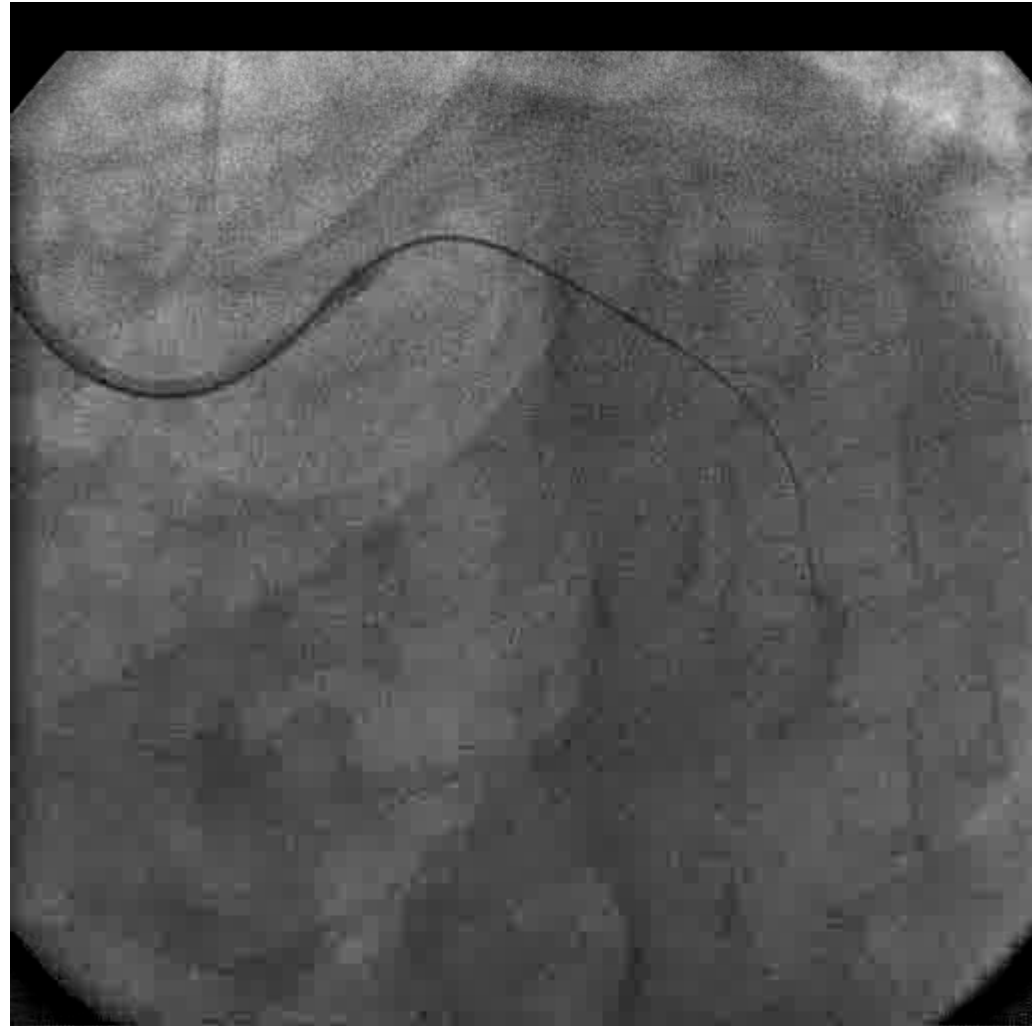
JR4.0 4F

Microcatheter :

Corsair135cm

GW:

X-tremeXTR



Case1

SYSTEM

Approach : Bi. Radial a.

GC:

Raunchar EBU3.5 6F

JR4.0 4F

Microcatheter :

Corsair135cm

GW:

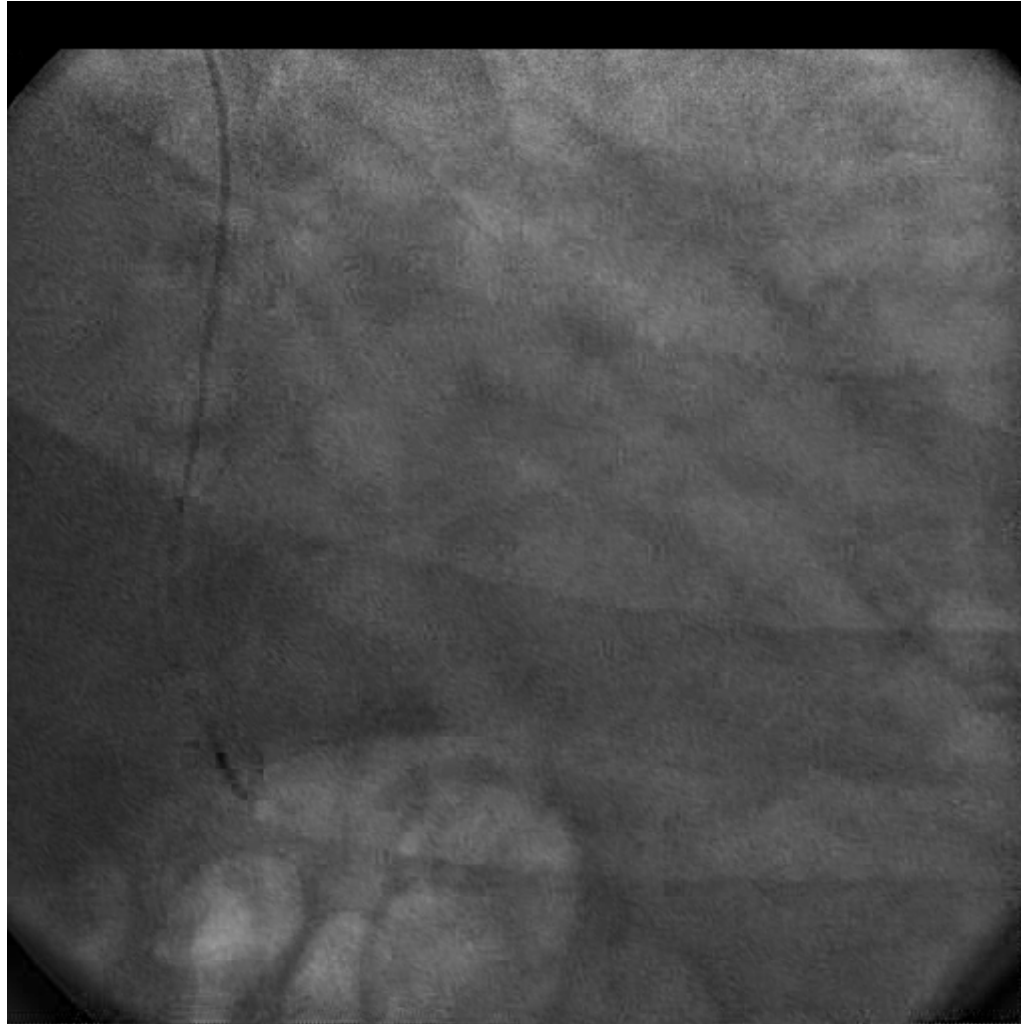
X-tremeXTR

Abyss intermediate



Case1

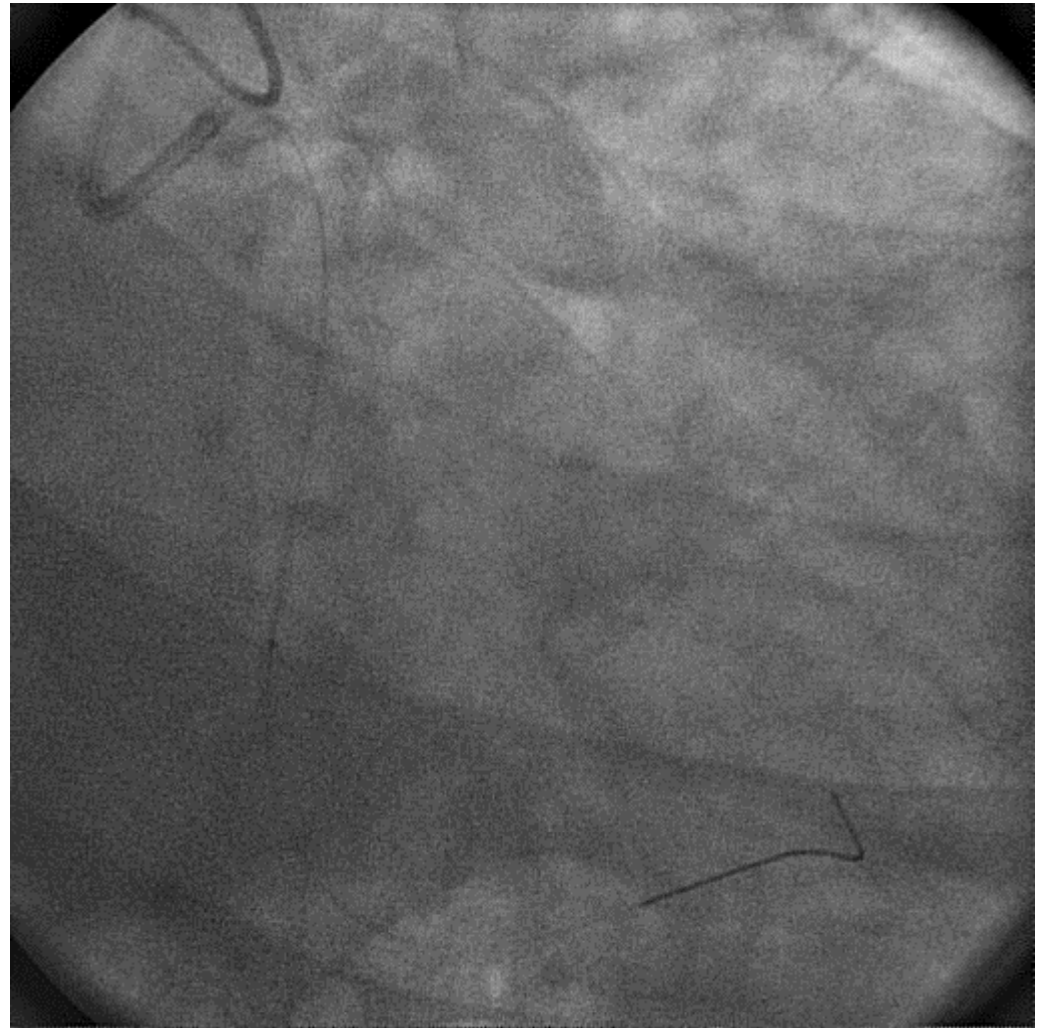
Angiogram via Corsair microcatheter



Case1

Procedure

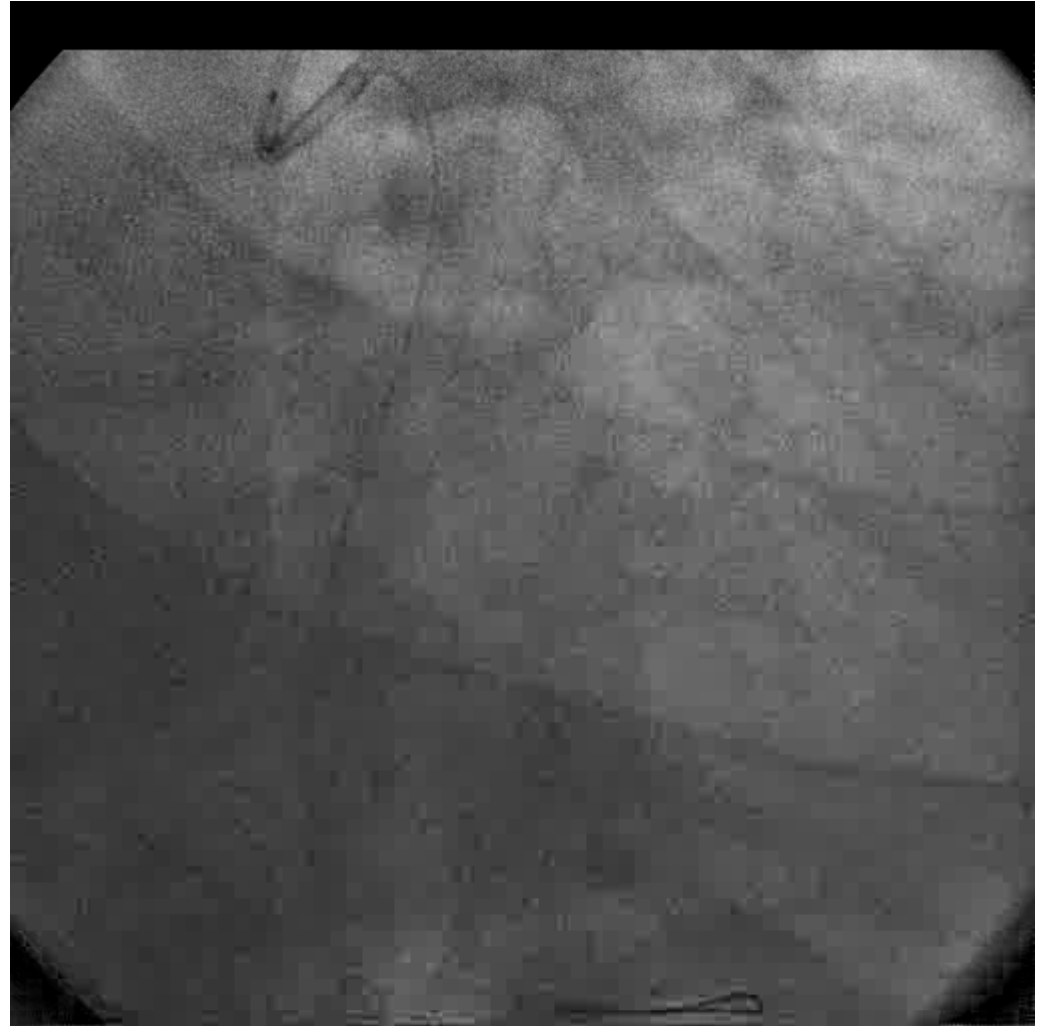
Tazuna 1.5 X 15mm



Case1

Procedure

Tazuna 1.5 X 15mm



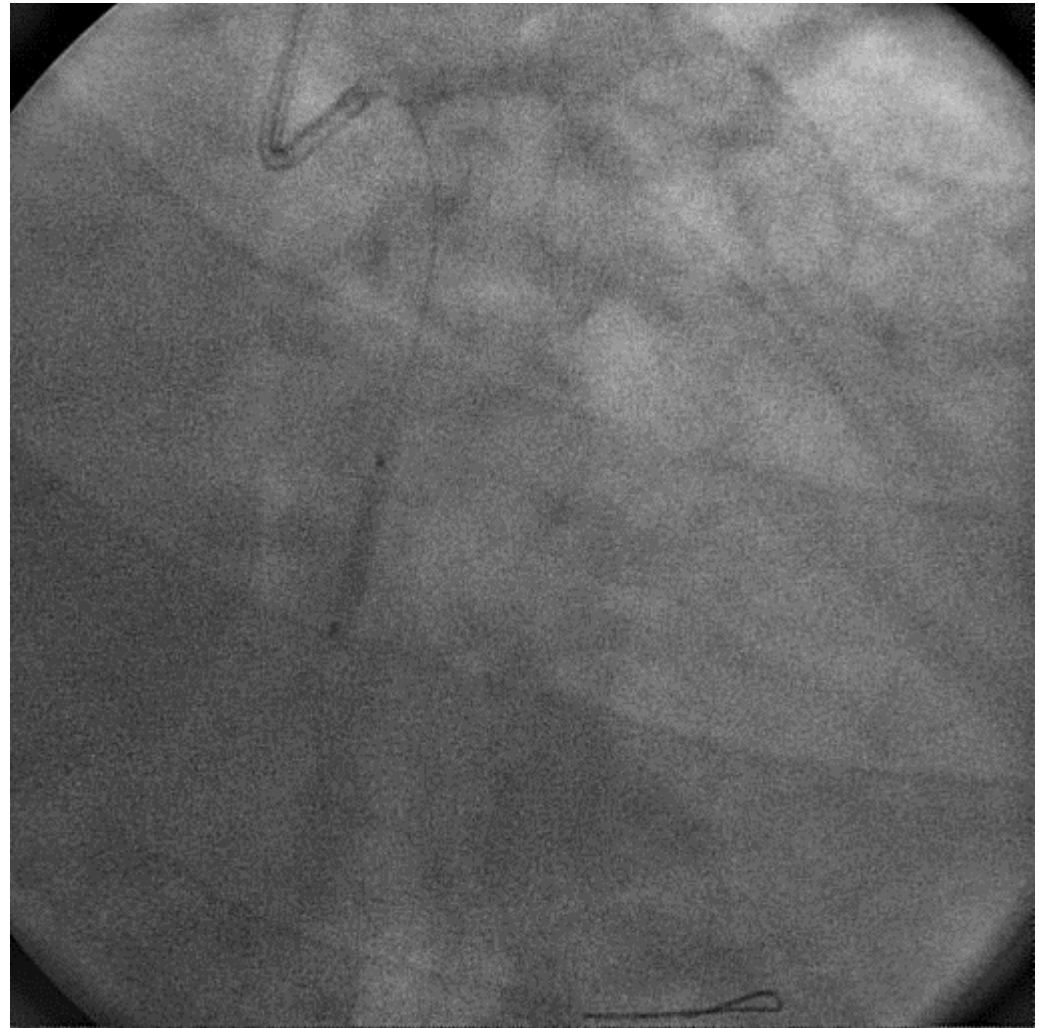
Case1

Procedure

Tazuna 1.5 X 15mm

IVUS: ViewIT

Lifespear HP 2.25 X 15mm



Case1

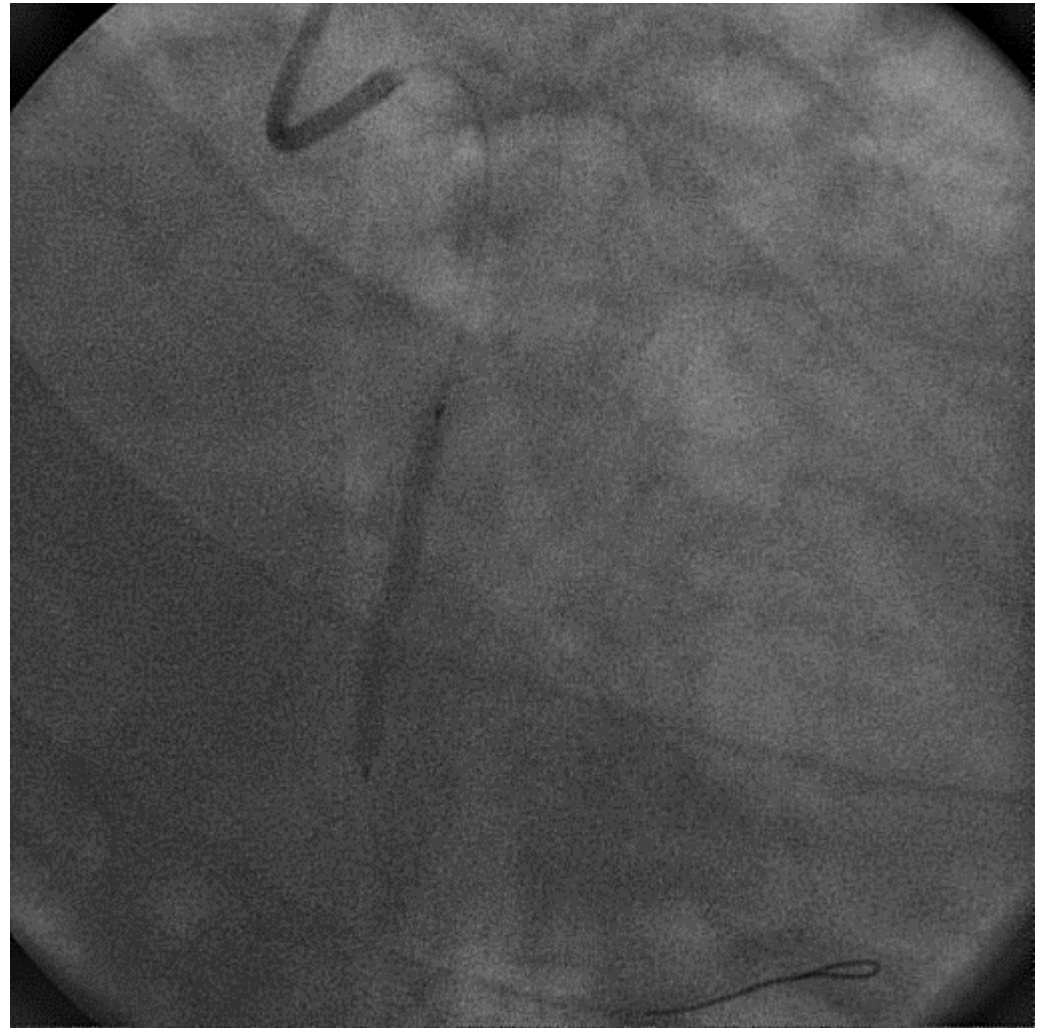
Procedure

Tazuna 1.5 X 15mm

IVUS: ViewIT

Lifespear HP 2.25 X 15mm

Nobori 2.5 X 28mm
(5atm)



Case1

Procedure

Tazuna 1.5 X 15mm

IVUS: ViewIT

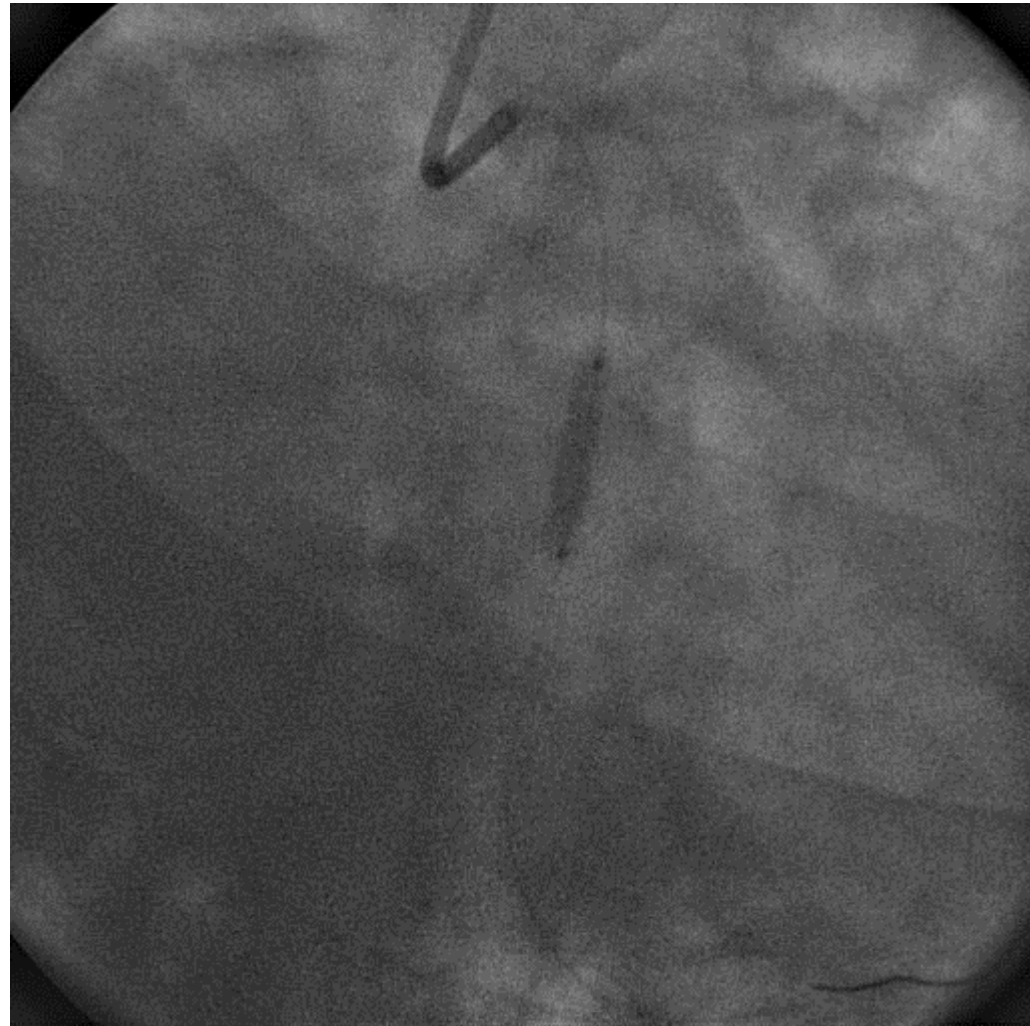
Lifespear HP 2.25 X 15mm

Nobori 2.5 X 28mm

(5atm)

Nobori 2.75 X 14mm

(14atm)



Case1

Procedure

Tazuna 1.5 X 15mm

IVUS: ViewIT

LifespearHP 2.25X12mm

Nobori 2.5X28mm

(5atm)

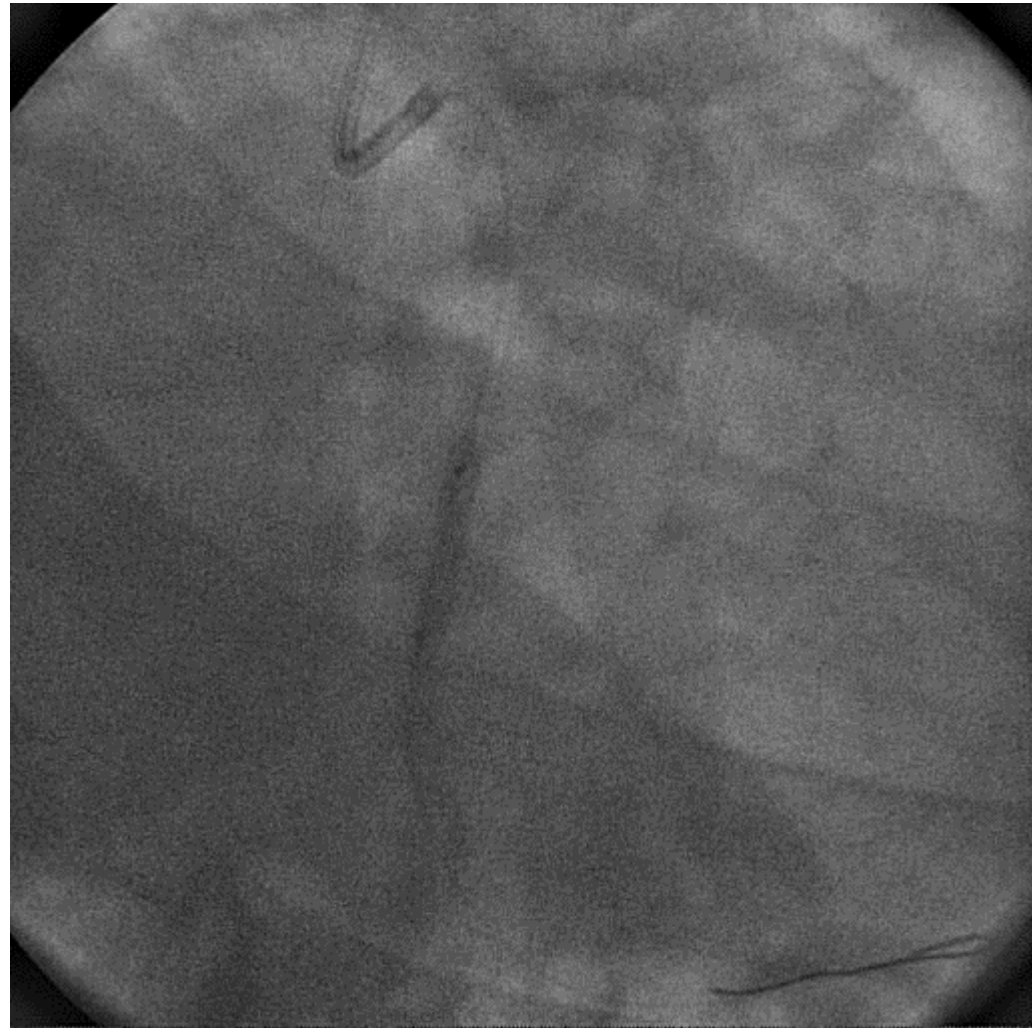
Nobori 2.75 X 14mm

(14atm)

LifespearHP 2.25X12mm

(22atm)

IVUS : ViewIT



Case1

Procedure

Tazuna 1.5 X 15mm

IVUS: ViewIT

Lifespear HP 2.25 X 12mm

Nobori 2.5 X 28mm
(5atm)

Nobori 2.75 X 14mm
(14atm)

Lifespear HP 2.25 X 12mm
(22atm)

IVUS : ViewIT



Case1

Procedure

Tazuna 1.5 X 15mm

IVUS: ViewIT

LifespearHP 2.25X12mm

Nobori 2.5X28mm

(5atm)

Nobori 2.75 X 14mm

(14atm)

LifespearHP 2.25X12mm

(22atm)

IVUS : ViewIT



Case1: Summary

PrePCI:



LCX#13 CTO (TIMI1)

Post PCI:



LCX#13 0% (TIMI3)

Case2

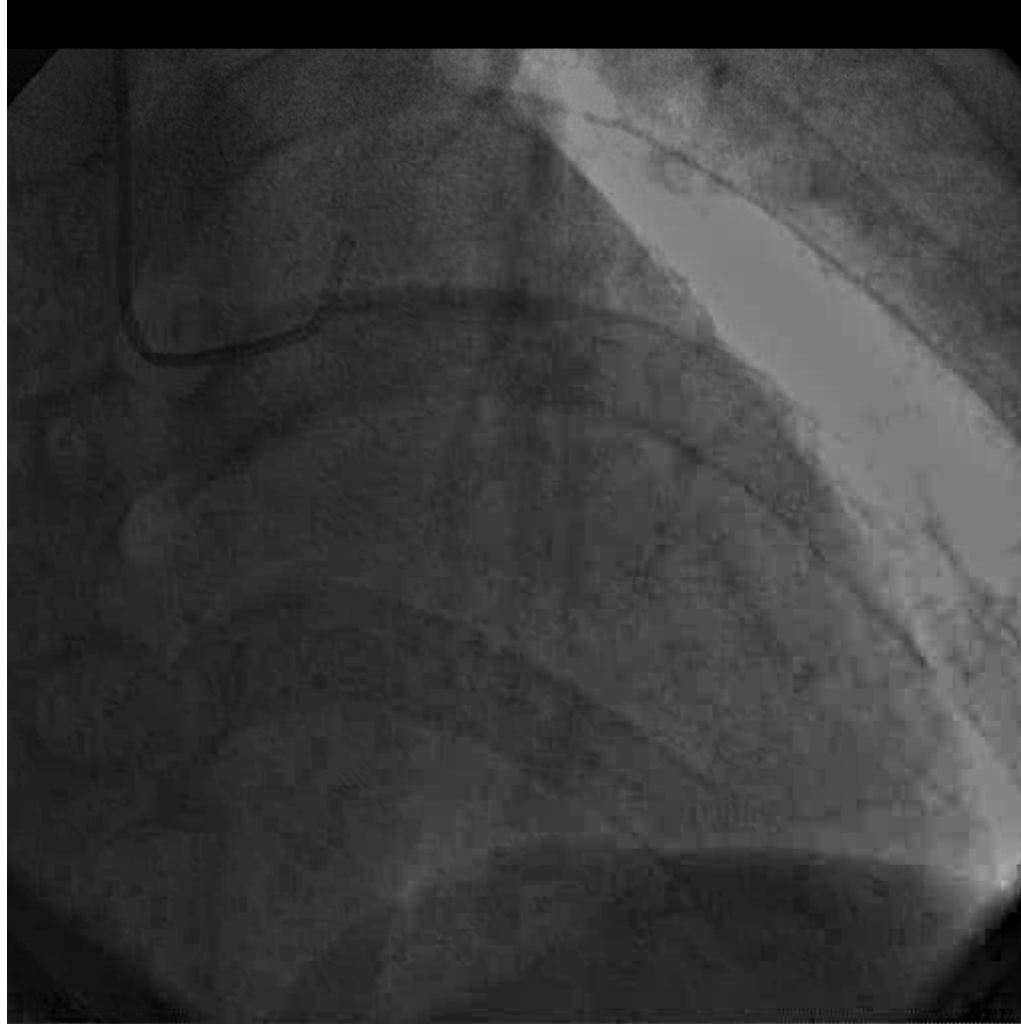
Tazuna for KBT

- 55y.o. female
- Unstable angina pectoris
- Hypokinesia at antero-septum from mid to apex

- Em CAG: LAD#7 bifurcation lesion
 - 99% stenosis with delay
 - intact LCX & RCA
 - no collateral vessel to LAD

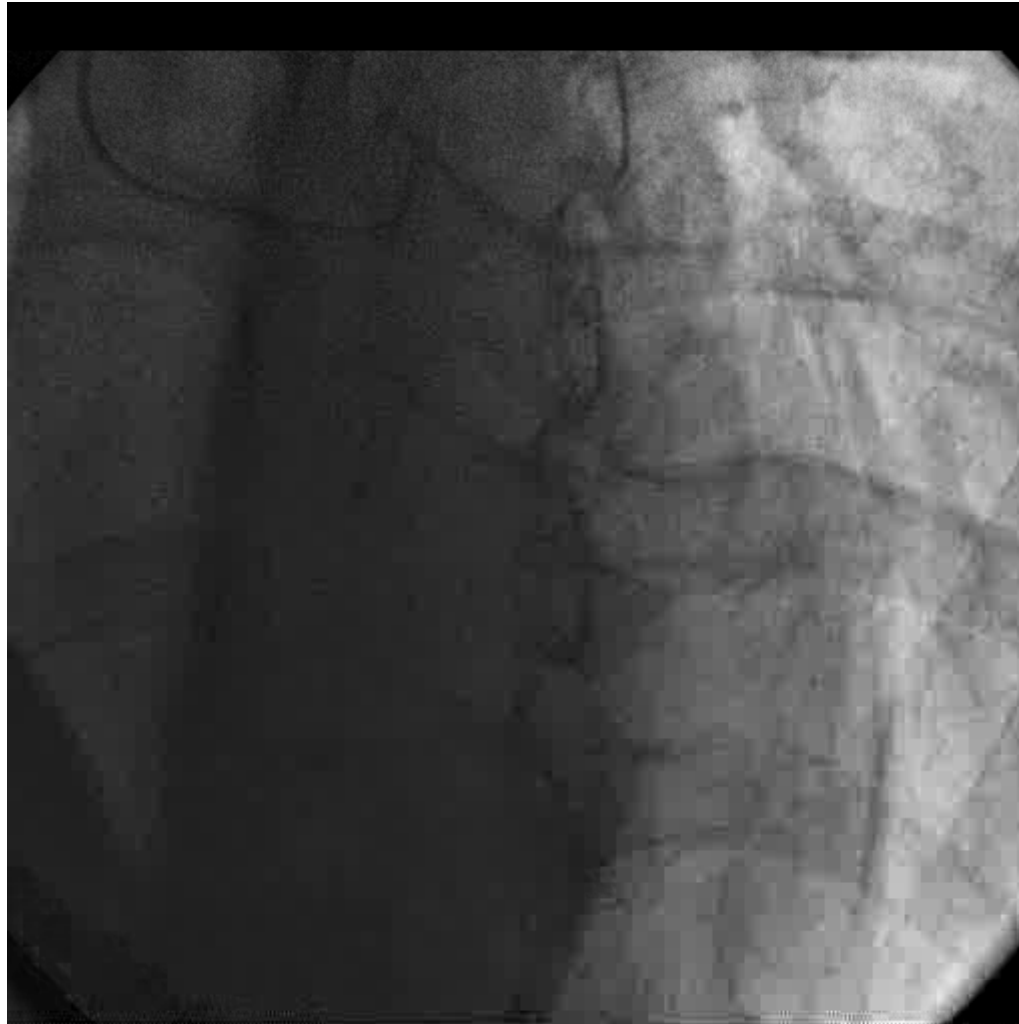
Case2

LAD#7 99%delay



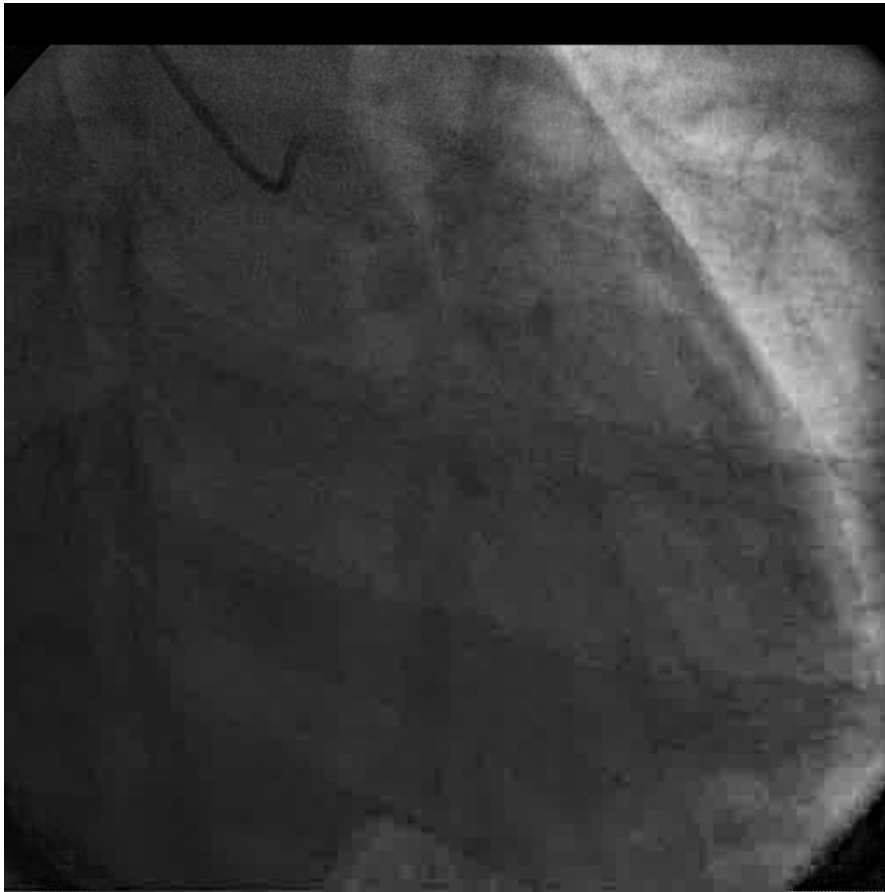
Case2

LAD#7 99%delay



Case2

*AP caudal view:
No stenosis in LCX*



*LAO view:
No stenosis in RCA*



Case2

SYSTEM

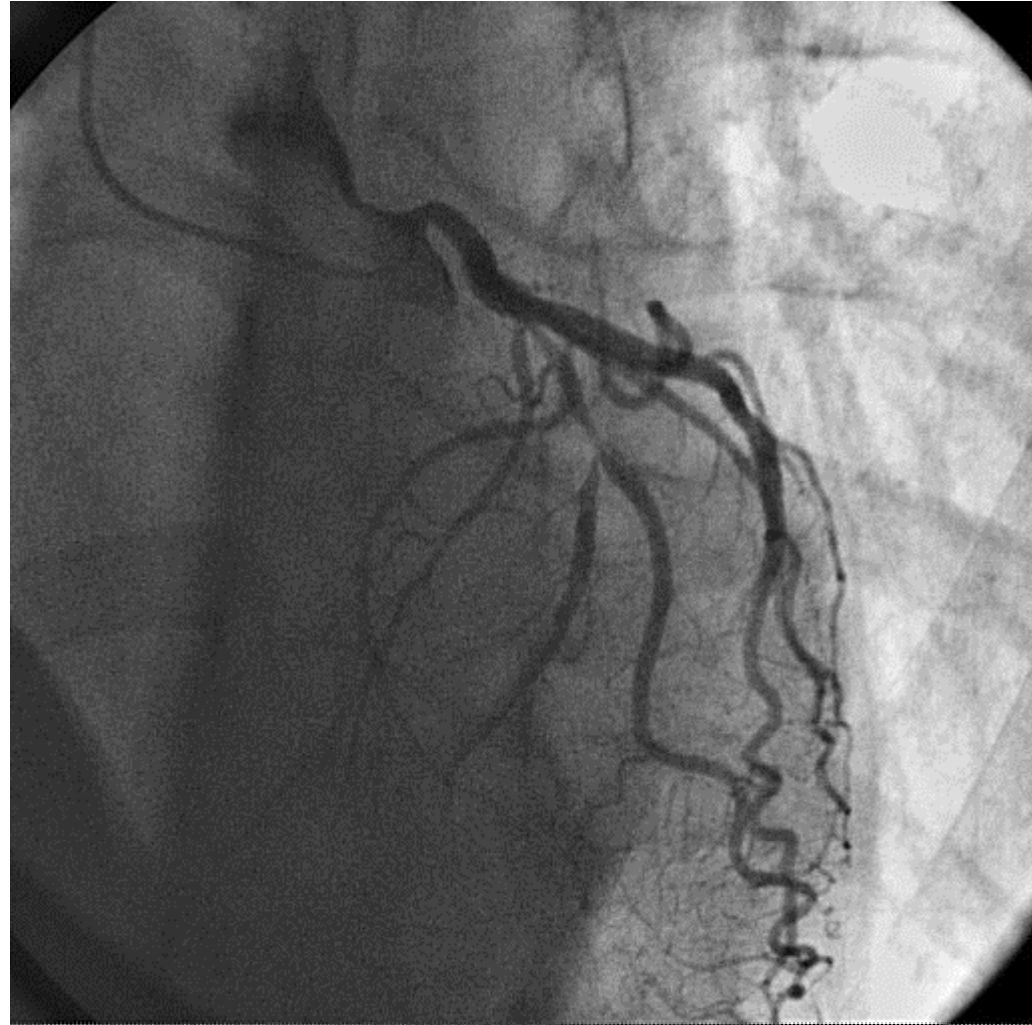
Approach : rt.Radial a.

GC:

Raunchar SL3.5 6F

GW:

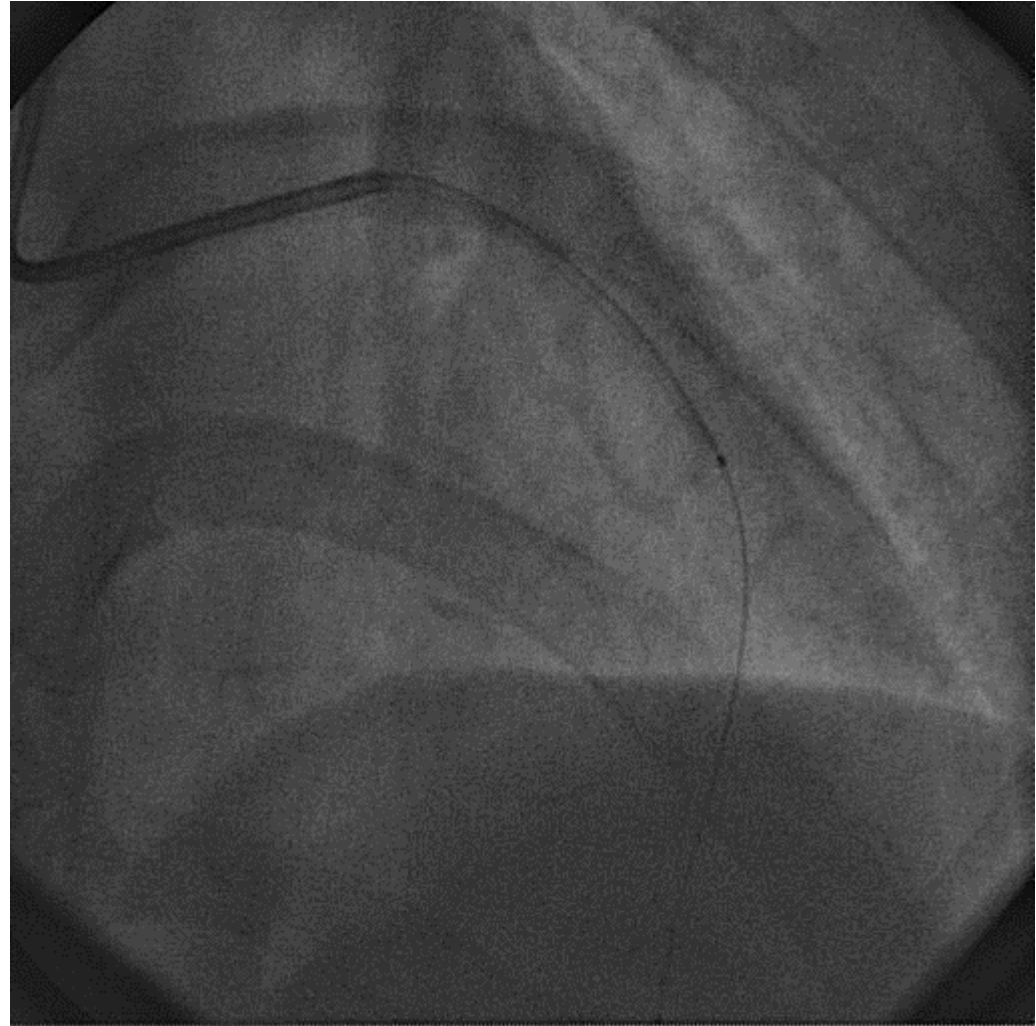
*Runthrough
extrafloppy*



Case2

Procedure

Thrombuster GR



Case2

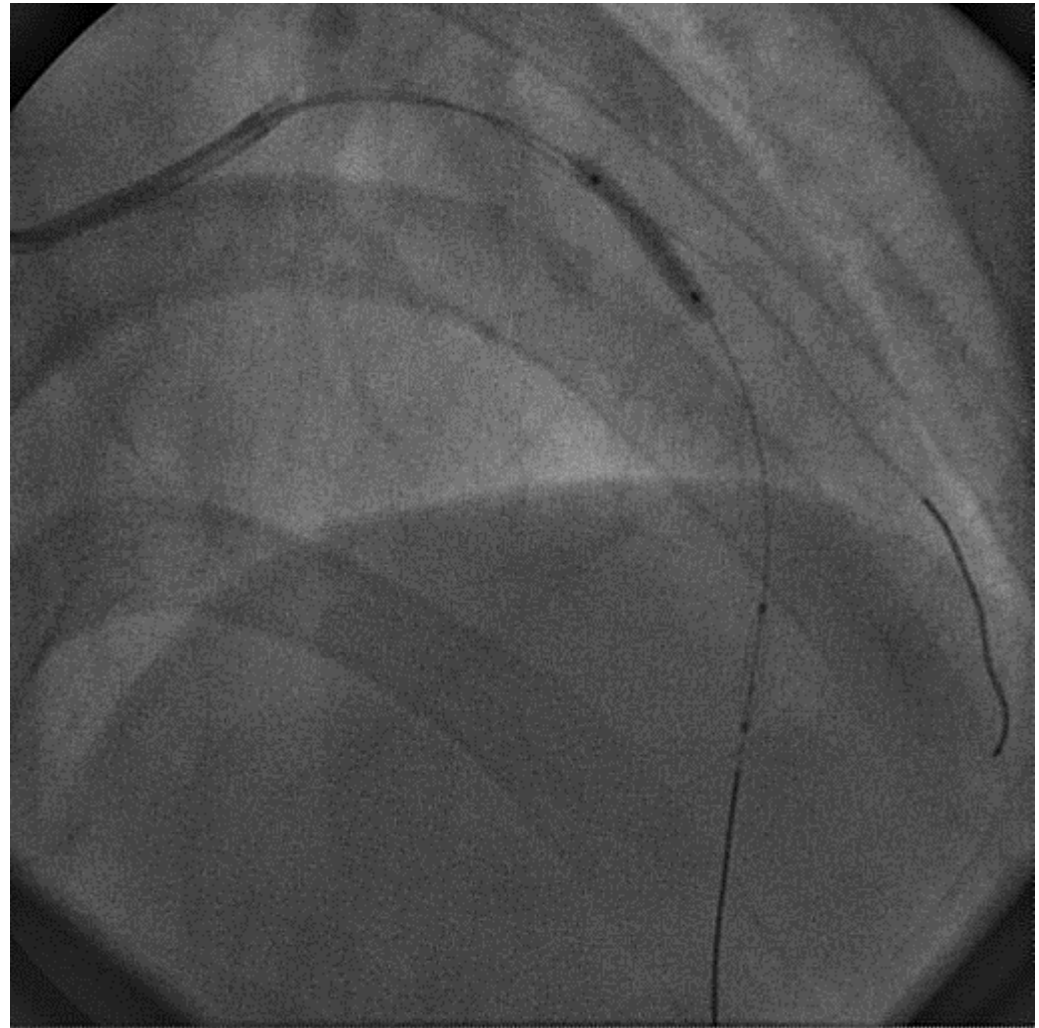
Procedure

Thrombuster GR

FiltrapGW to LAD

RT extrafloppy to D1

Tazuna2.5 X 15mm



Case2

Procedure

Thrombuster GR

FiltrapGW to LAD

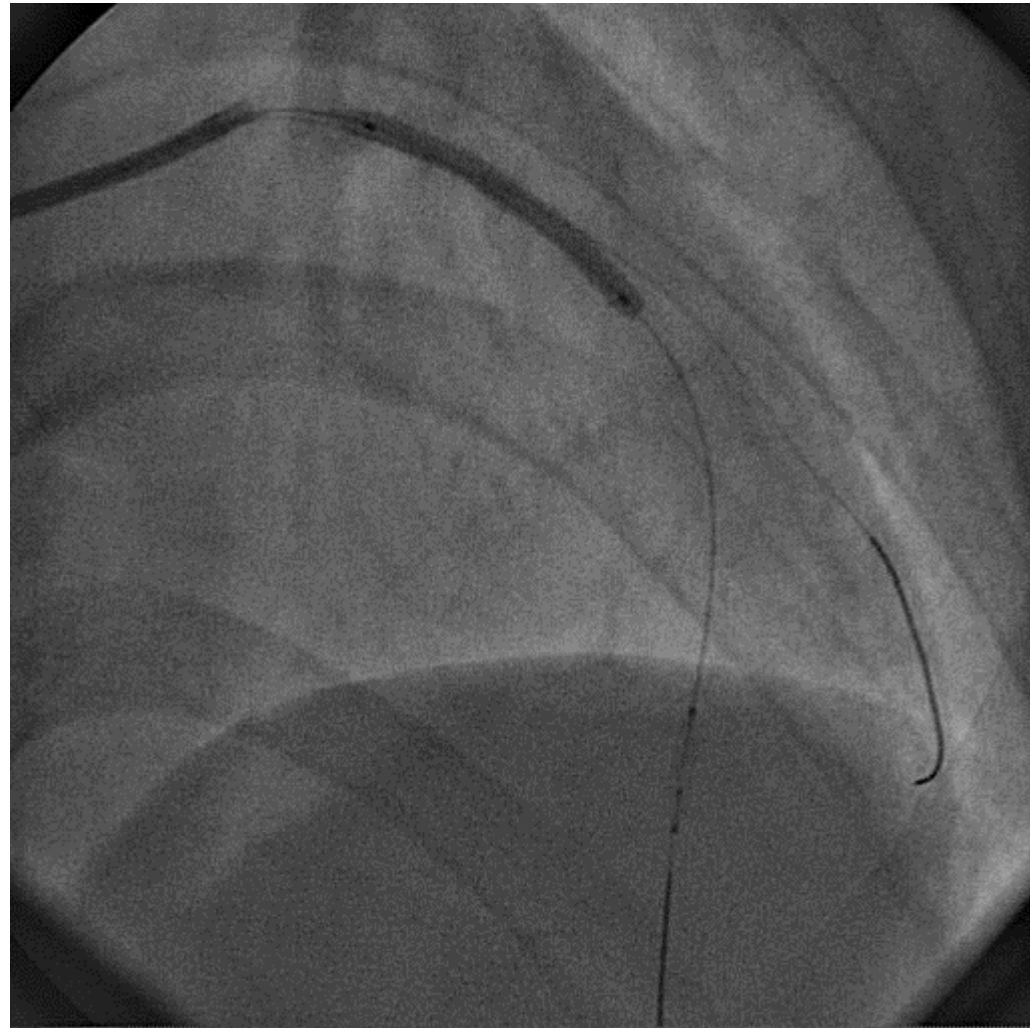
RT extrafloppy to D1

Tazuna2.5 X 15mm

(10atm)

XienceV2.5 X 28mm

(10atm)



Case2

Procedure

Thrombuster GR

FiltrapGW to LAD

RT extrafloppy to D1

Tazuna2.5 X 15mm

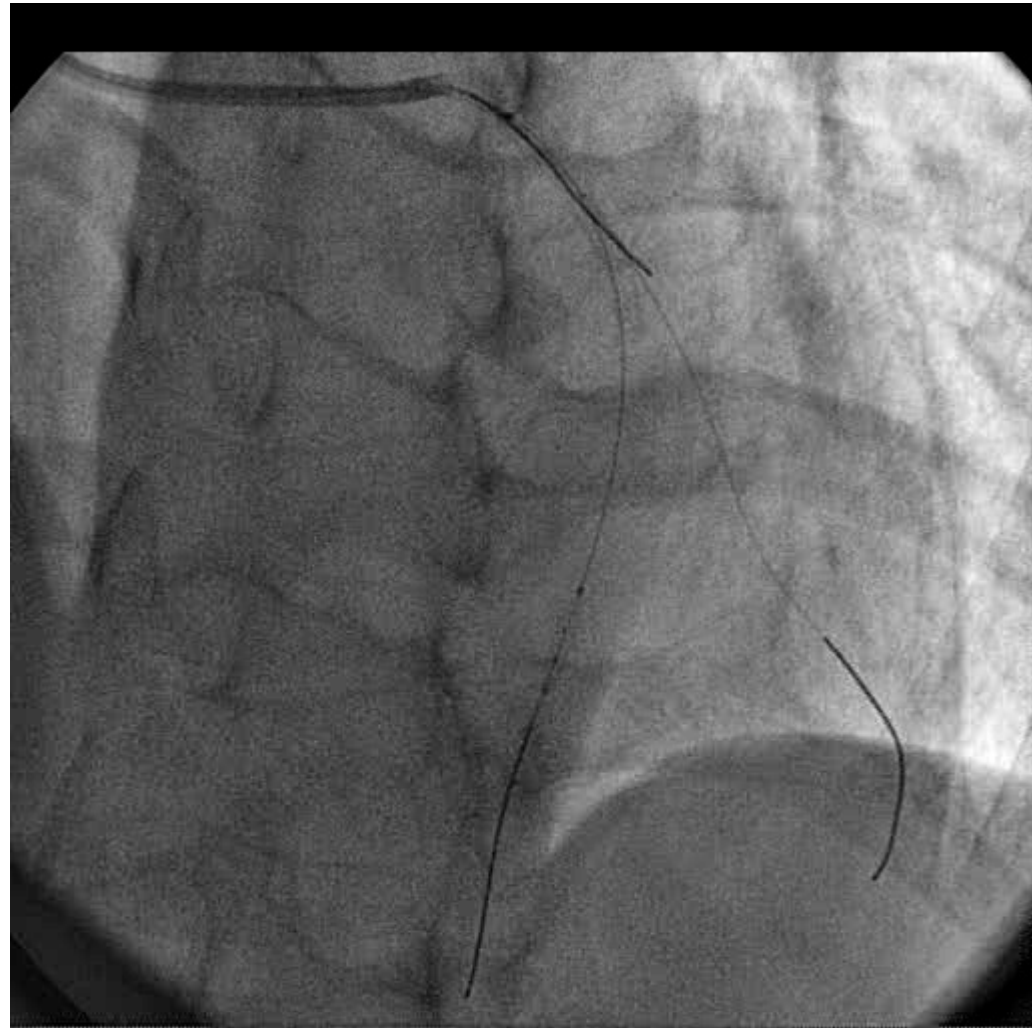
(10atm)

XienceV2.5 X 28mm

(10atm)

Crusado microcatheter

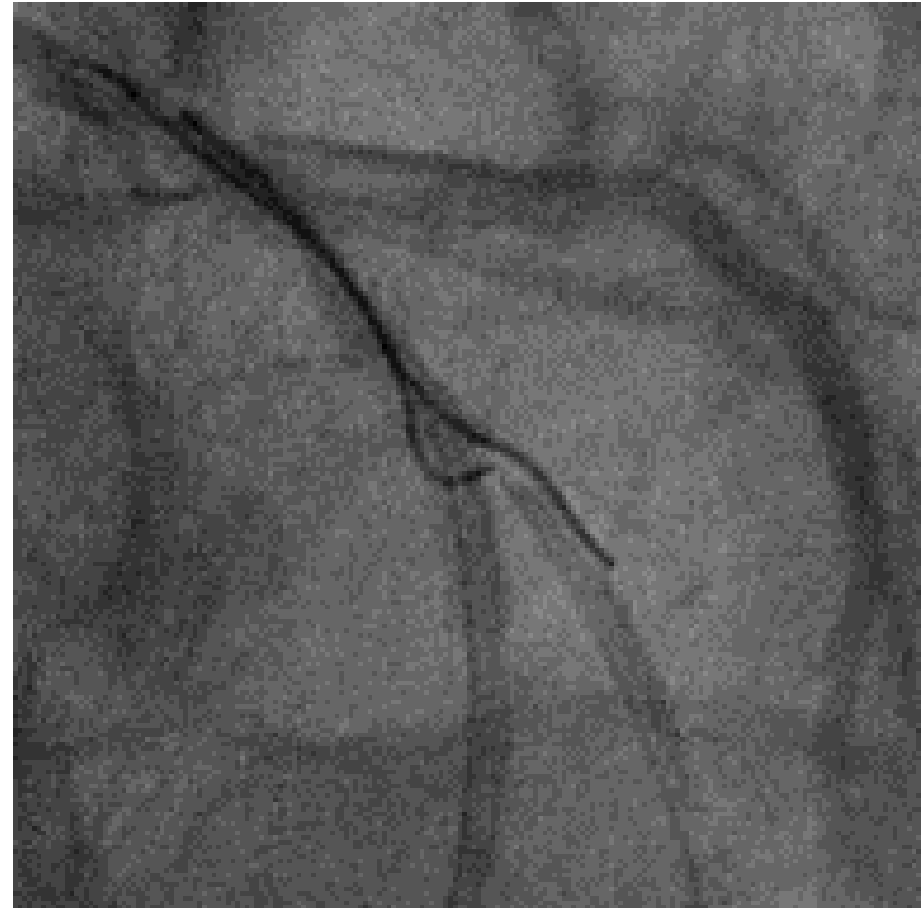
+ RT extrafloppy(2)



Case2



2nd RT extrafloppy to plaque



*Sion blue GW into DI
(2nd RT as landmark)*

Case2

Procedure

Thrombuster GR

FiltrapGW to LAD

RT extrafloppy to D1

Tazuna2.5 X 15mm

(10atm)

XienceV2.5 X 28mm

(10atm)

Crusado microcatheter

+ RT extrafloppy(2)

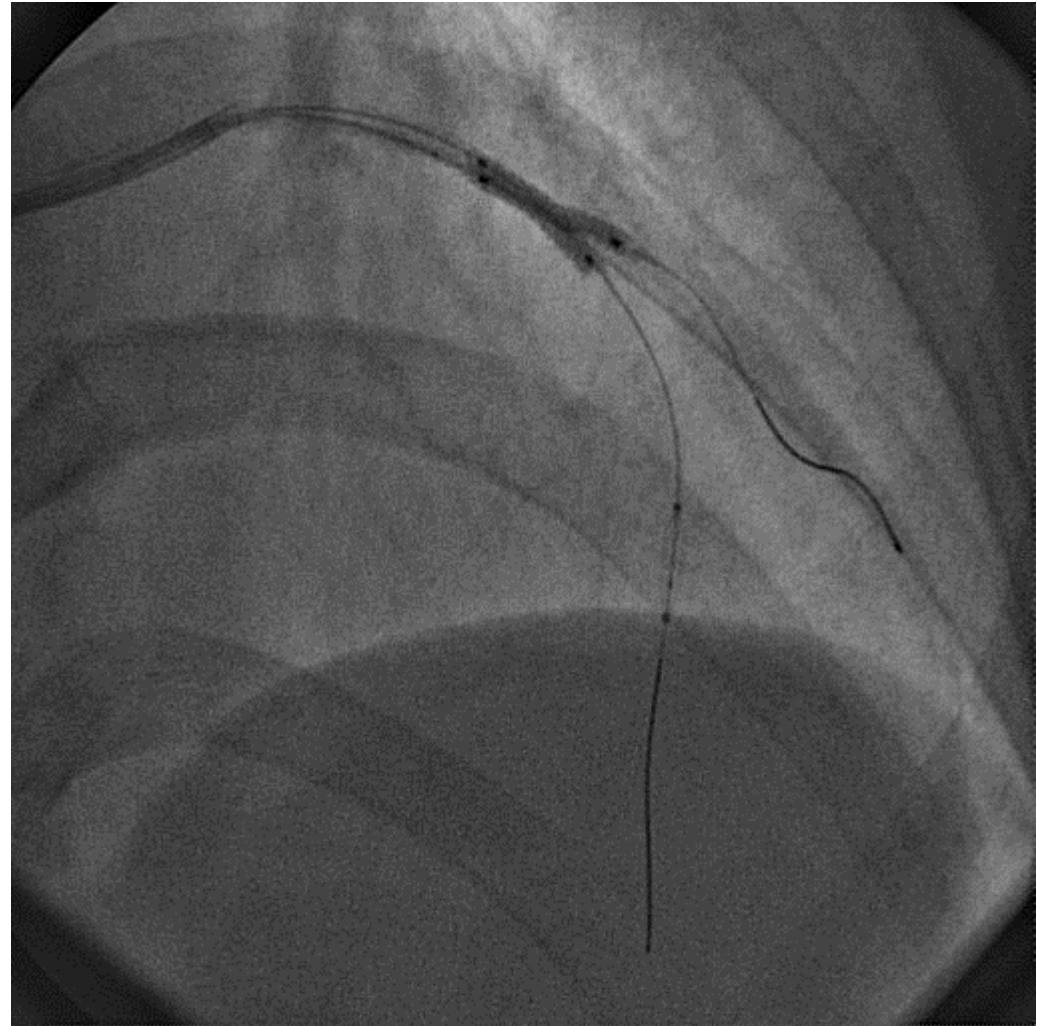
+ Sion Blue

i-bp22 2.5X15mm(24atm)

KBT: i-bp22 2.5X15mm

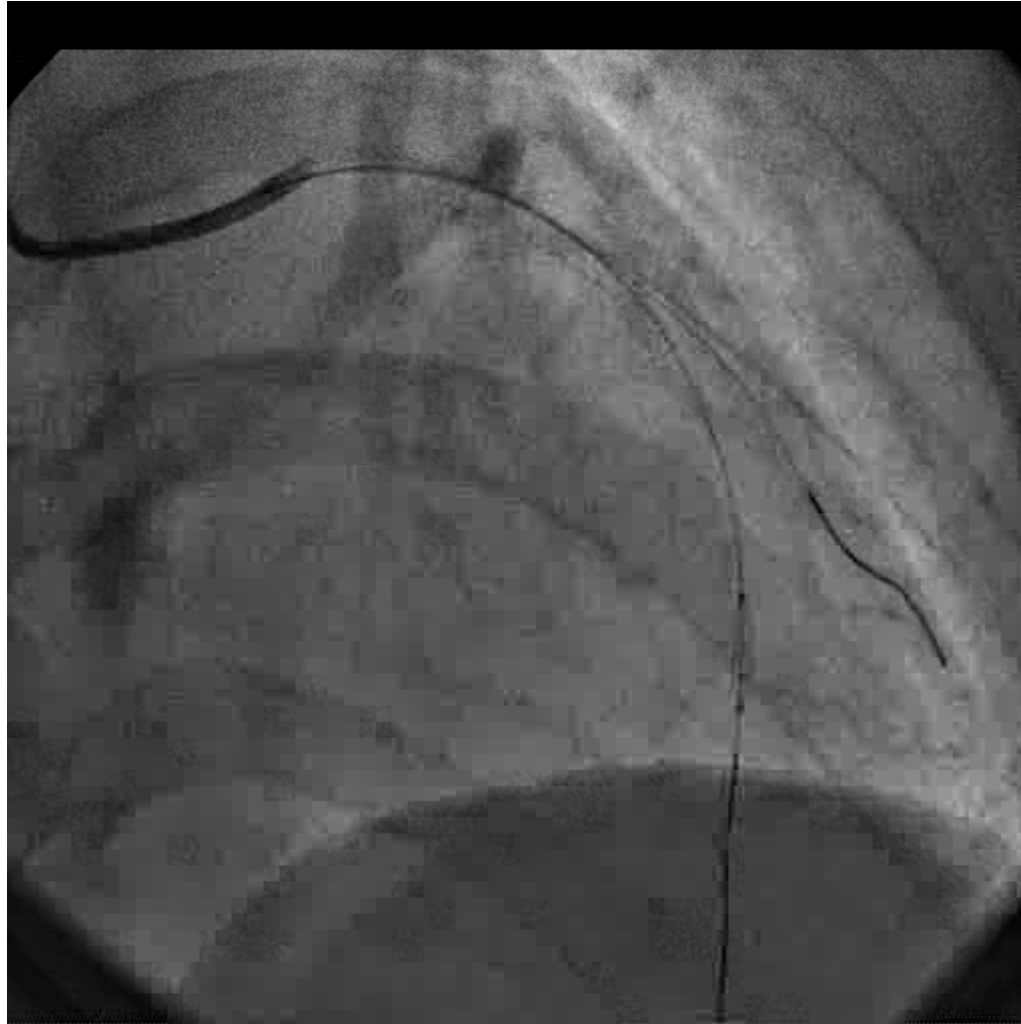
Tazuna2.5X15mm

(8atm)



Case2

LAD#7 0% with filter embolization (TIMI0)



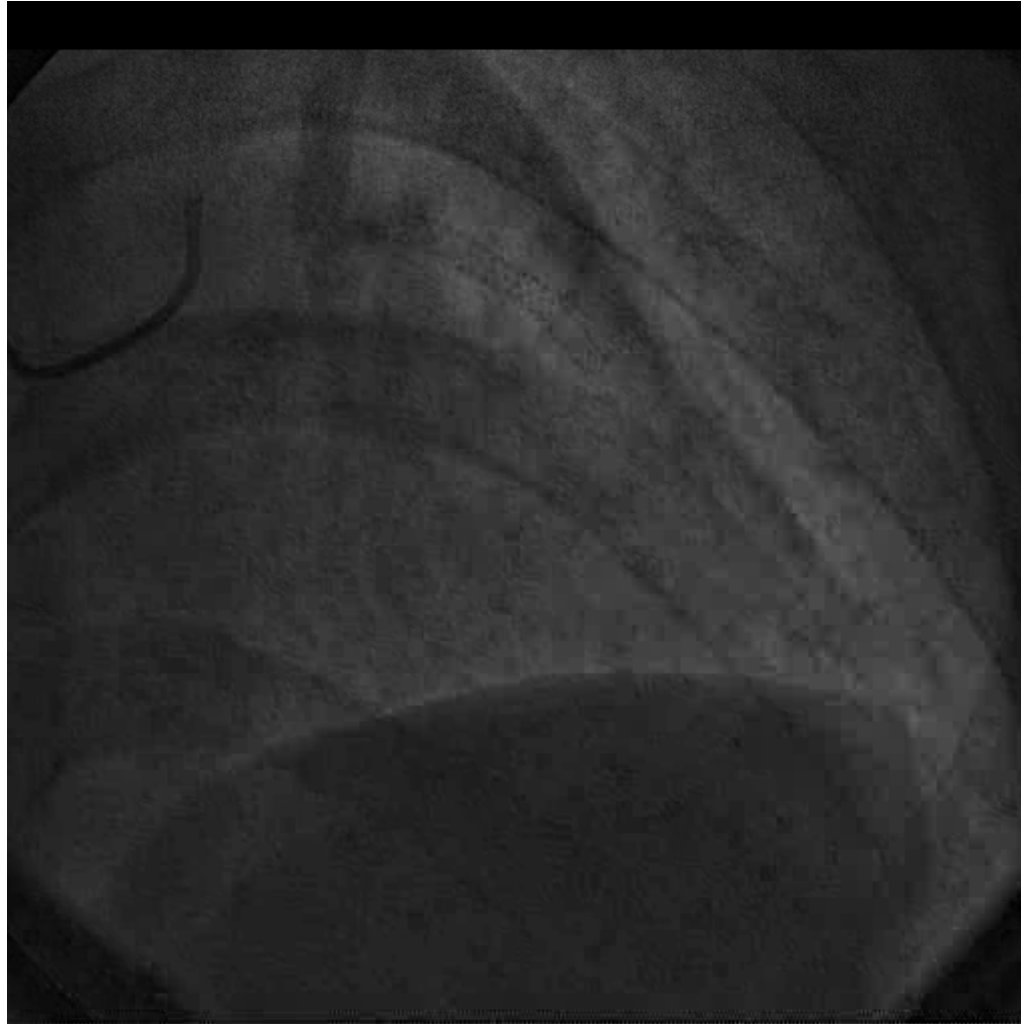
Case2

LAD#7 0% with filter embolization (TIMI0)



Case2

LAD#7 0% with TIMI3 flow



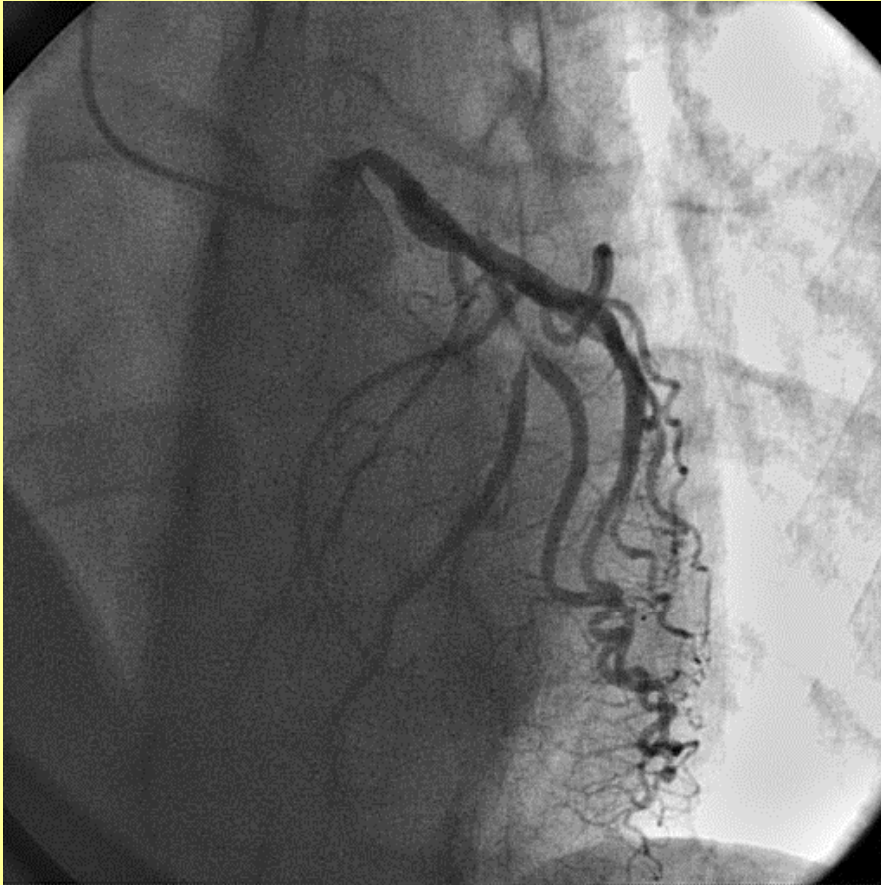
Case2

LAD#7 0% with TIMI3 flow



Case2: Summary

PrePCI:



LAD#7 99%(TIMI2)

Post PCI:



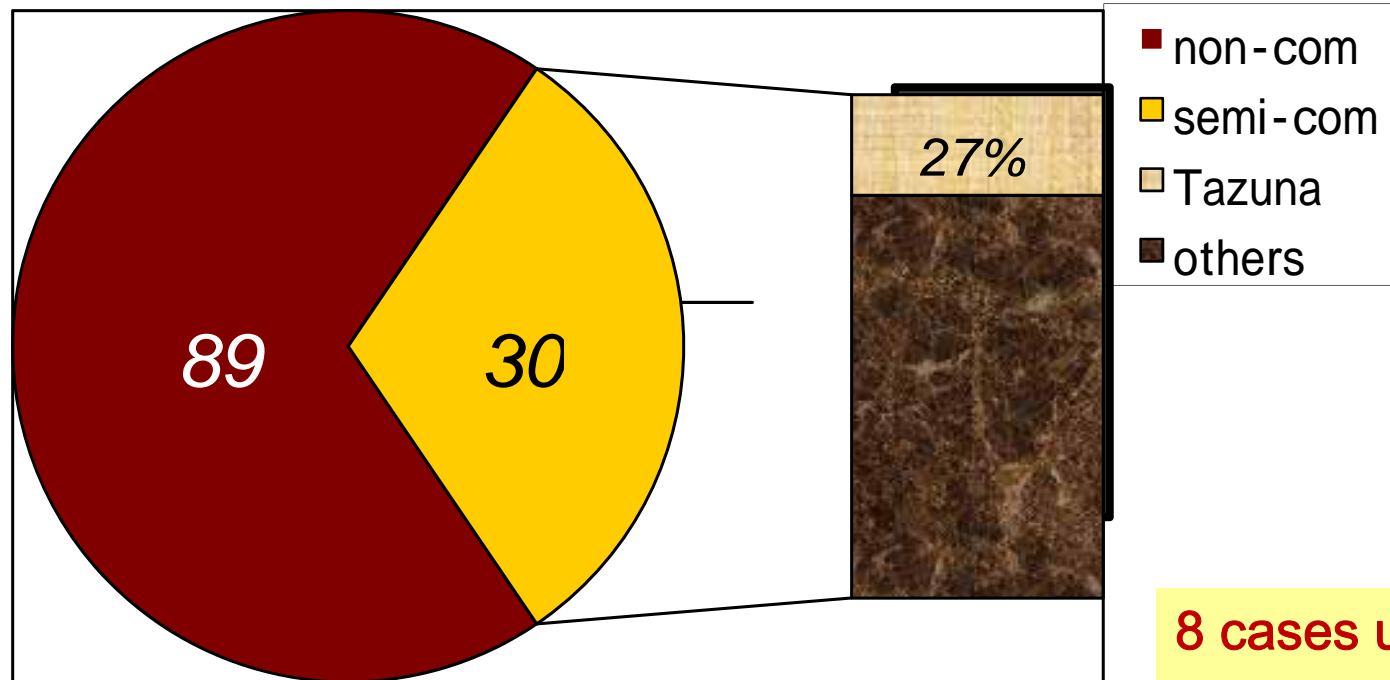
LAD#7 0%(TIMI3)

Frequency of Tazuna use in my last 50 cases



Experience of Tazuna

My last 50 cases



8 cases using Tazuna

KBT: 5 cases

Pre-dilatation: 2 cases

Pre&KBT: 1 case



Conclusions

- Tazuna is one of the popular semi-compliance balloon catheters in Japan, even after more than 2 years since its release.
- Tazuna has a narrow and tapered tip with good crossability, thus is considered good at pre-dilatation for tight lesion such as CTO or calcified or tortuous lesion, and side-branch dilatation after stent implantation.

