

# Guidewire Assisted Device Placement in Large ASD with Aortic Rim Deficiency - —An Easy and Simple Method—

Department of Pediatrics & Child Health, Kurume Univ.

Department of Pediatric Cardiology, St. Mary's Hospital

Kenji Suda, MD, Yoshiyuki Kagiya, MD, Hironaga Yoshimoto,  
MD, Yozo Teramachi, MD, Shintaro Kishimoto, MD, Yoshiyuki  
Kudo, MD, Motofumi Iemura, MD, Yushiro Yamashita, MD

**TCT-AP 2016**

**COI**



**Presenter: Kenji Suda**



**We have nothing to disclose.**

# Difficult ASD

Large defect

Defect size = BW

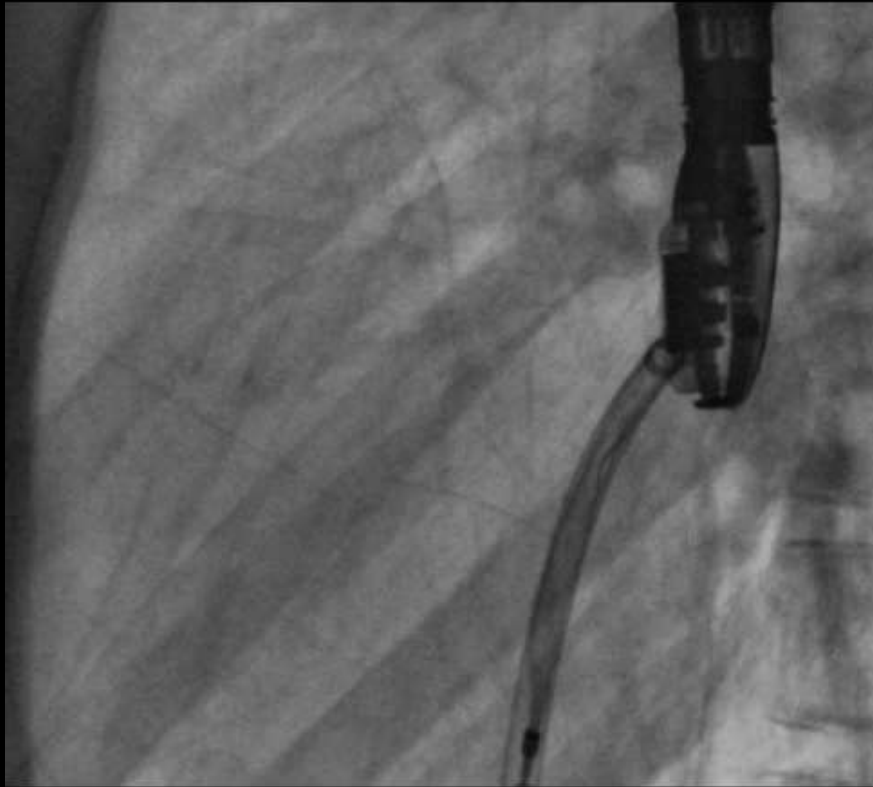
Defect size = BW + 10mm

$\geq 20$ mm in diameter

Wide range rim deficiency

especially Aotic rim

# Standard procedure

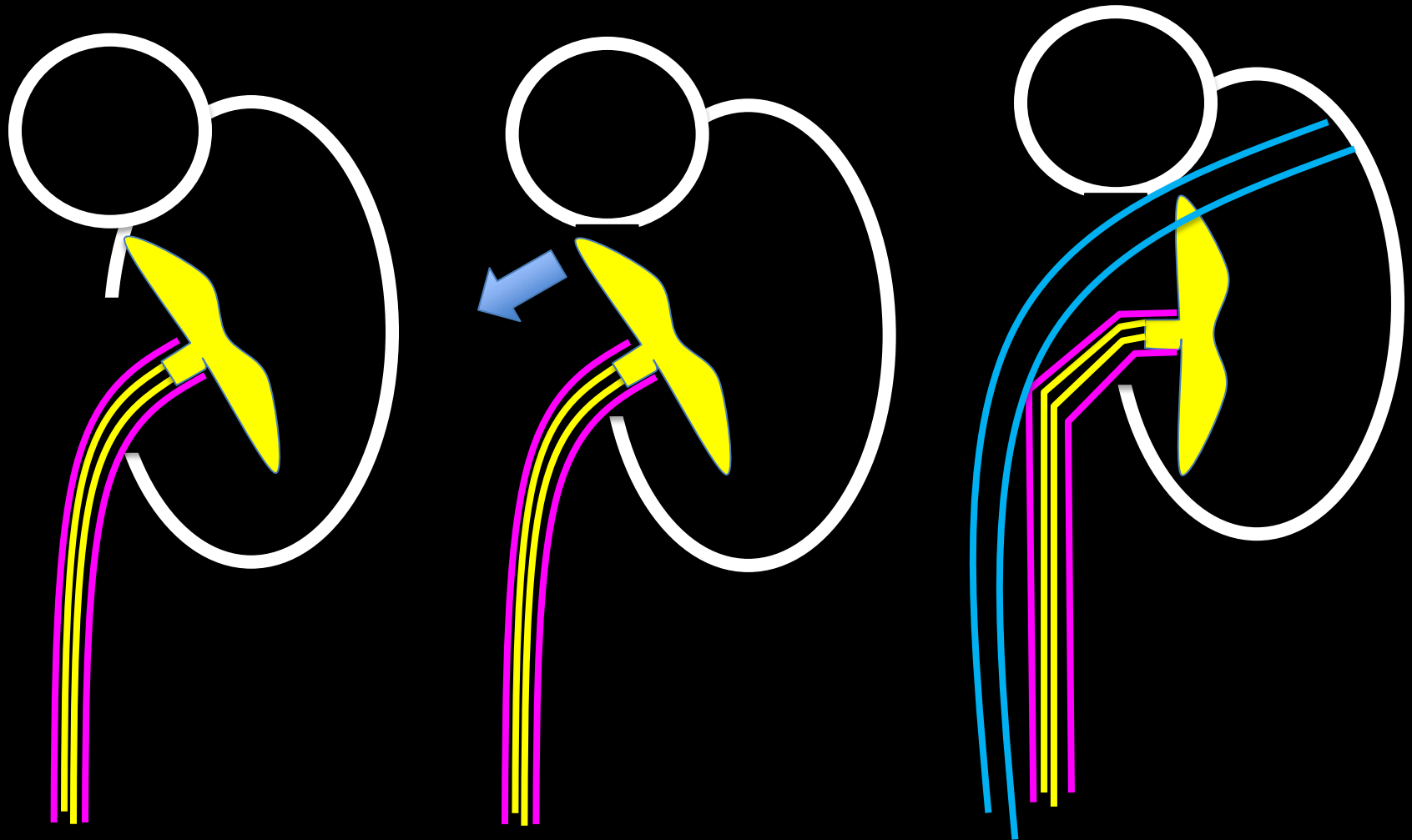


# Aligning discs to interatrial septum



# Prevention of LA disc in case with Ao rim deficiency

Lat



# Placement Technique

Technique : LAD Engagement-Disengagement

Masura technique – Football

RUPV

Direct w/ Sheath : Hausdorf

Medikit Multi-purpose

Mechanical prevention : Long-sheath assist

Balloon assist

# Subjects

Among 446 pts who underwent device closure of ASD

3 patients, 2005~

4.9 y.o.	19kg	defect	20mm
----------	------	--------	------

7.8 y.o.	22kg	defect	18mm
----------	------	--------	------

60 y.o.		defect	22mm
---------	--	--------	------

All patients had rim  $< 3\text{mm}$  at  $> 60$  degree



# Guidewire assist technique

Lat



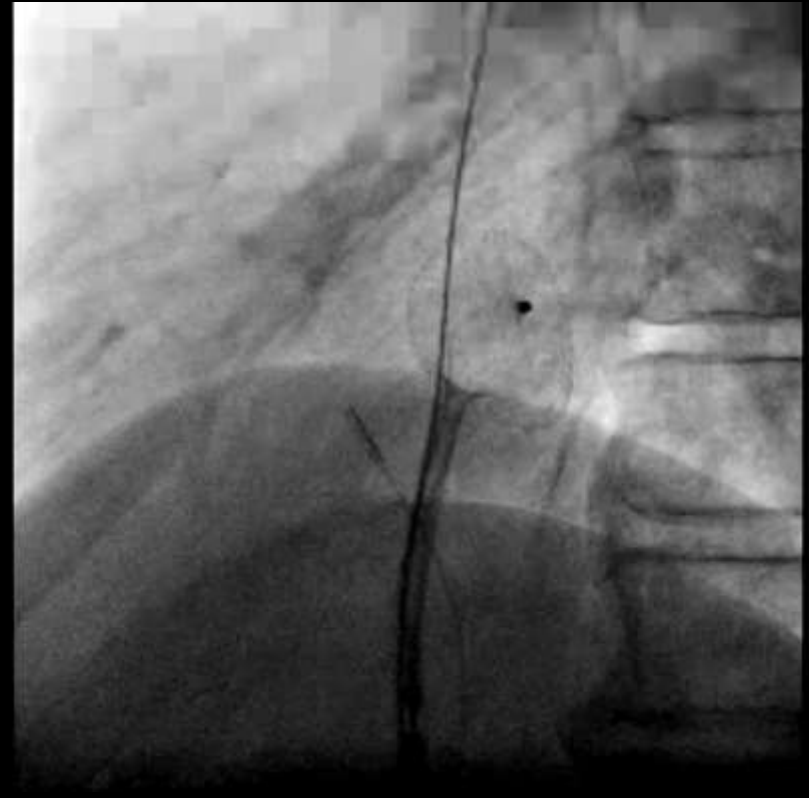
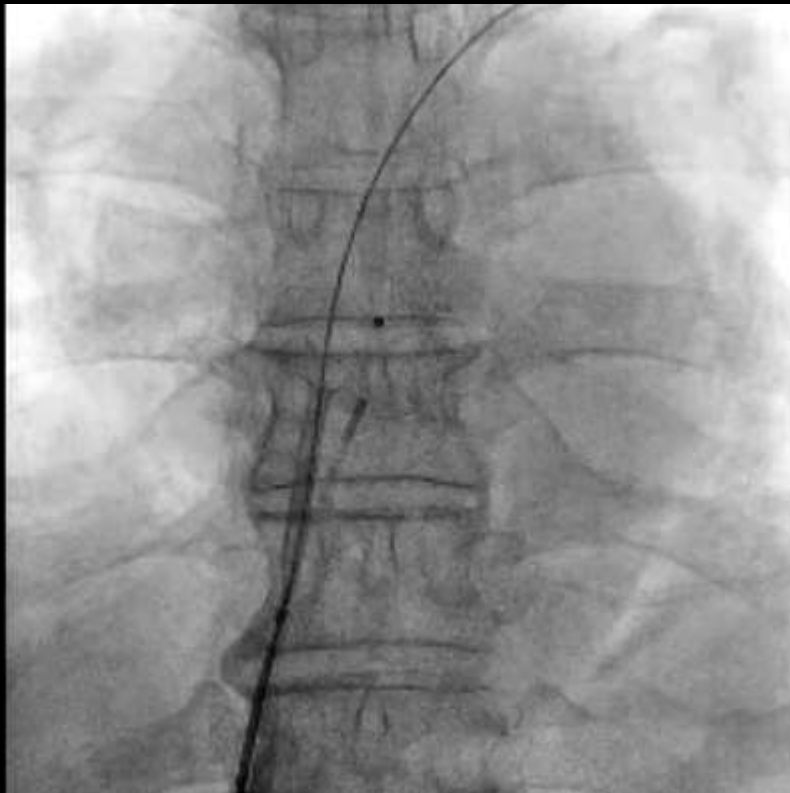
# Technique

## Sheath assist + Modification of Balloon assist

- Open both discs in LA
- Insert guidewire just next to delivery cable in a single long sheath
- Place a guidewire into LUPV and prevent LA disc from prolapse
- Once retrieve RA disc into long sheath, pull them back, and open RA disc

# Guidewire assist technique

Fluoroscopy

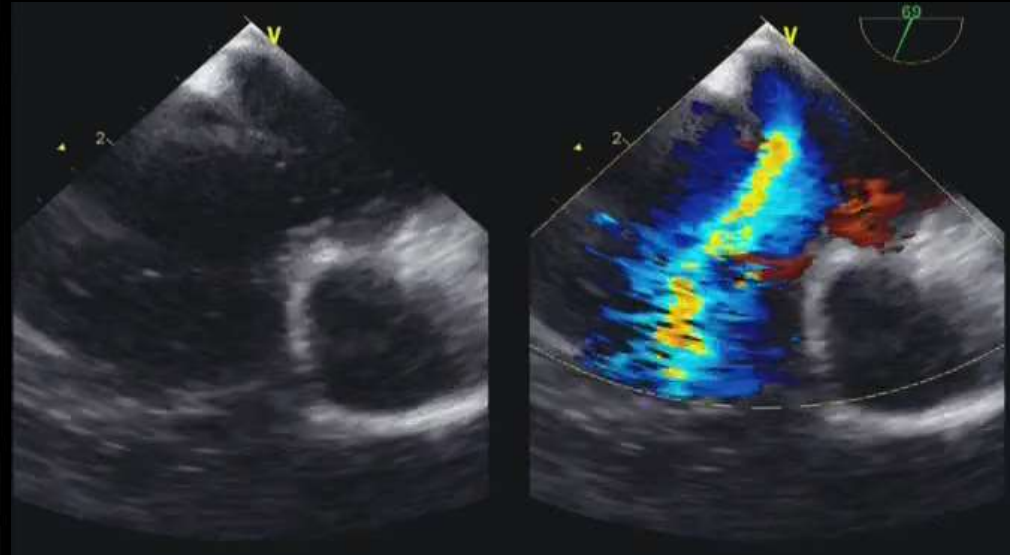
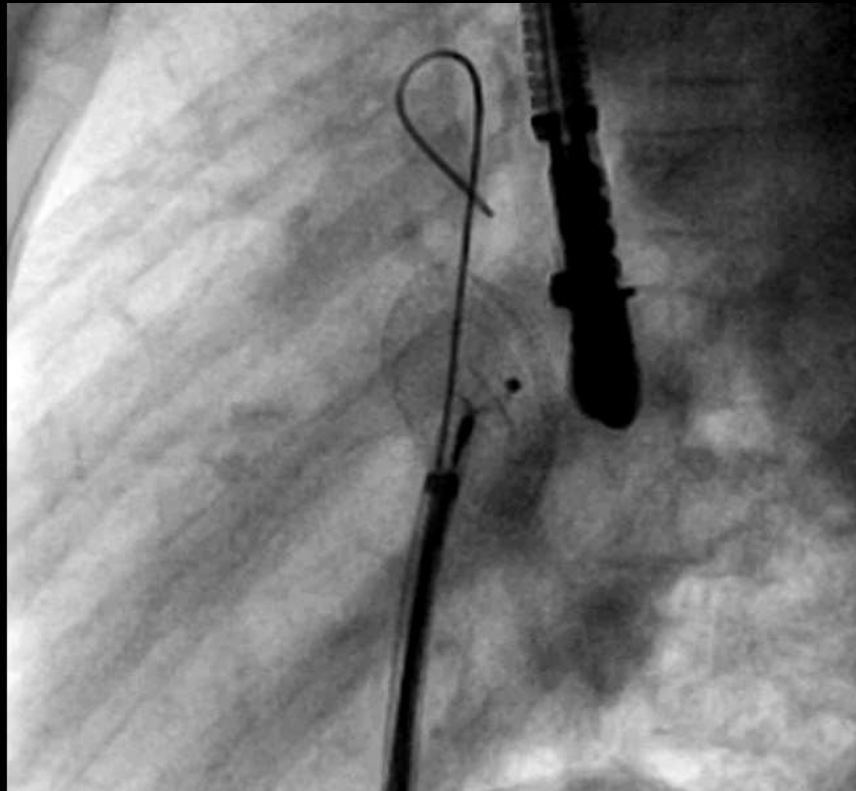


# Guidewire assist technique

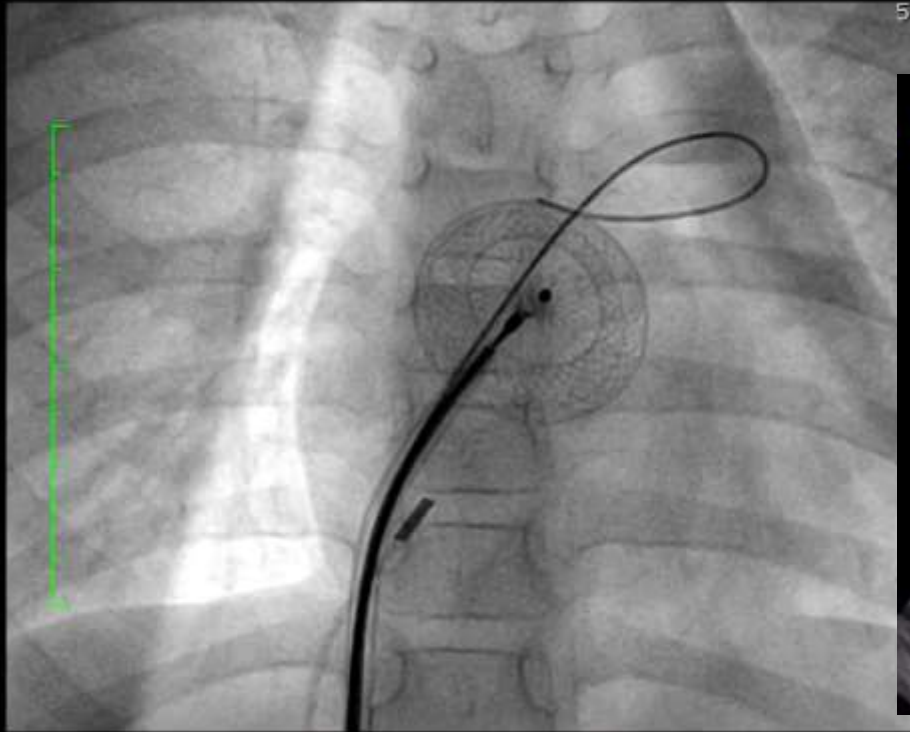
ICE picture



# Guidewire assist technique



# Guidewire assist technique



# Benefits & drawbacks

## Benefits

Pre-existing equipments

No need for new access

Obtain time to confirm  
device position

## Drawbacks

Risk of thrombus & Embolization  
Discs  
Long sheath

Unable in small LA disc  
Unable in OccluTec

# Conclusions

- We report guidewire assist technique to prevent prolapse of LA disc in case with Ao rim deficiency
- This is easy and less expensive technique because it does not need new access or equipment and therefore worth to try once before try other methods.
- Obviously, further experience is required.