

Left Main Substudy from the j-Cypher Registry

Takeshi Kimura MD.

Kyoto University Hospital

Mamoru Toyofuku MD.

Tsuchiya General Hospital

Takeshi Morimoto MD.

Kyoto University

Kazuaki Mitsudou MD.

Kurashiki Central Hospital

Masakiyo Nobuyoshi MD.

Kokura Memorial Hospital

on behalf of the j-Cypher Registry Investigators

Disclosure Statement of Financial Interest

Within the past 12 months, I or my spouse/partner have had a financial interest/arrangement or affiliation with the organization(s) listed below.

<u>Affiliation/Financial Relationship</u>	<u>Company</u>
Grant/Research Support	Cordis Cardiology
Consulting Fees/Honoraria	Cordis Cardiology
Major Stock Shareholder/Equity	
Royalty Income	
Ownership/Founder	
Intellectual Property Rights	
Other Financial Benefit	

Left Main Substudy from the j-Cypher Registry J-CYPHER Registry

**j-Cypher registry (August 2004-November 2006)
12824 patients with first registration**

Main-Analysis

**582 patients underwent
PCI for ULMCA
(4.5% of whole population)**

Vs.

**12242 patients
underwent
PCI for non-ULMCA**

Patients excluded:

74 patients with non-SES treatment for ULMCA
(non-stent, BMS or other type of DES)

Patients excluded:

28 patients with hybrid treatment for ULMCA
(SES and BMS or other type of DES)

Patients excluded:

4 patients missing information on lesion location
of ULMCA or bifurcation stent strategy

Sub-Analysis

**476 patients treated exclusively with SES for
ULMCA**

Left Main Substudy from the j-Cypher Registry

J-CYPHER Registry

Baseline Characteristics

	ULMCA (n=582)	Non-ULMCA (n=12242)	P
Age (years)	70.7 ± 10.6	68.3 ± 10.2	<.0001
Male	73%	75%	0.14
Presence of Shock	3.4%	1.3%	<.0001
Presence of AMI	13%	12%	0.75
Presence of UAP	18%	12%	<.0001
Heart Failure	24%	14%	<.0001
Diabetes	43%	41%	0.58
Diabetes (Insulin)	12%	9.3%	0.029
Renal insufficiency (eGFR<30)	15%	10%	<.0001
Dialysis	7.4%	5.2%	0.029
PVD	13%	12%	0.24
Euro Score	5.8 ± 3.6	4.6 ± 3.1	<.0001

Left Main Substudy from the j-Cypher Registry

J-CYPHER Registry

Baseline and Procedural Characteristics

	ULMCA (n=582)	Non-ULMCA (n=12242)	P
Bifurcation lesion	81%	24%	<.0001
Bifurcation 2 stents	30%	4.6%	<.0001
N of vessels treated	1.9±0.8	1.3±0.5	<.0001
Extent of CAD			<.0001
LMCA only	6.9%	0%	
LMCA + 1 vessel	24%	48%	
LMCA + 2 vessels	40%	30%	
LMCA + 3 vessels	21%	15%	
Post CABG	7.9%	7.1%	
Total stent length (mm)	56.3±37.2	41.8±27.6	<.0001
IVUS use	63%	47%	<.0001

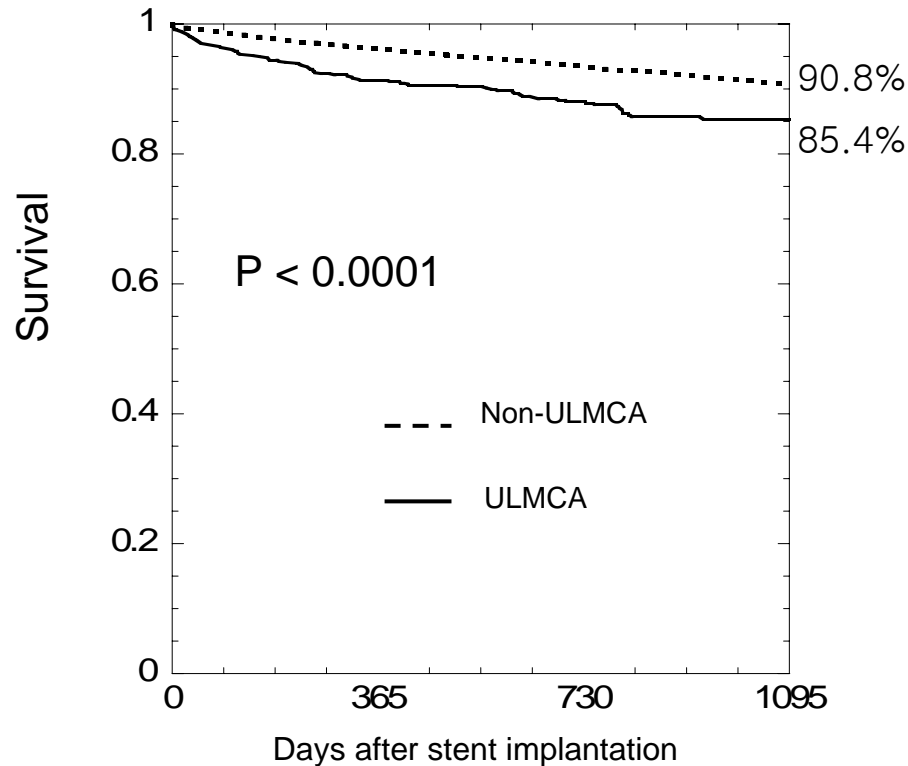
Clinical Outcomes at 3 Years

	ULMCA (n=582)	Non-ULMCA (n=12242)	P
All-cause Death	14.6%	9.2%	<.0001
Cardiac Death	7.3%	4.5%	<.0001
Sudden Death	1.6%	1.6%	0.5
MI	3.7%	3.4%	0.76
Definite ST	0.9%	1.2%	0.95
TLR	14.8%	13.8%	0.33
CABG	1.7%	1.9%	0.81
Any Revascularization	12%	9.3%	0.029

ULMCA versus Non-ULMCA

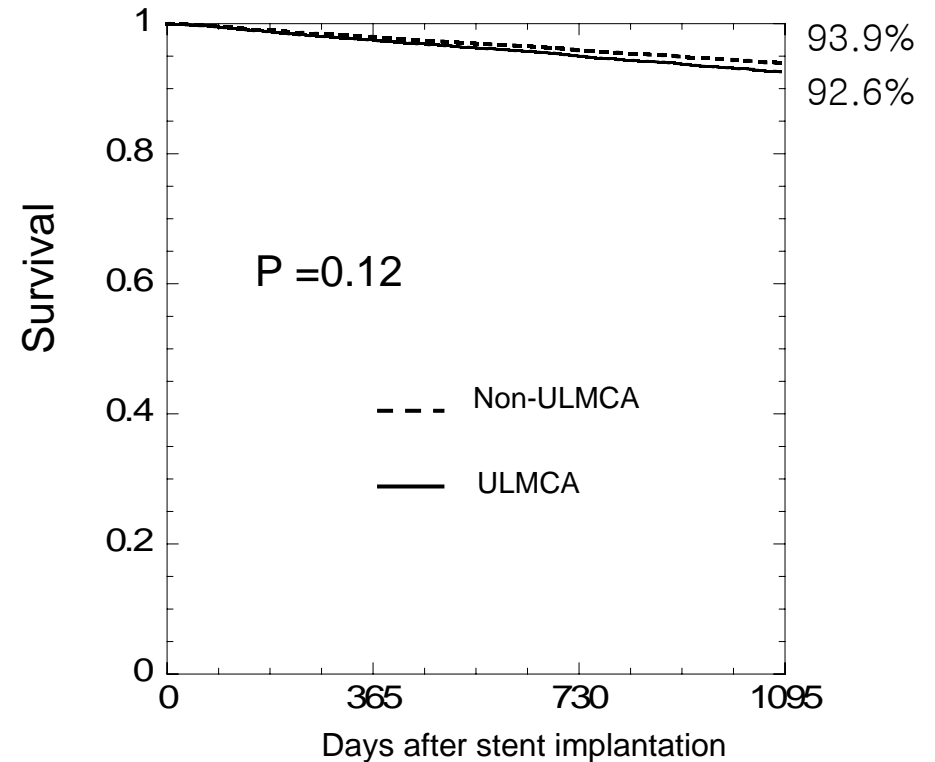
J-CYPHER Registry

Unadjusted Survival



Interval(Days)	0	365	730	1095
Non-ULMCA				
Incidence (%)		3.8	6.6	9.2
No. at risk	12242	11394	8737	4055
ULMCA				
Incidence (%)		8.7	9.2	14.8
No. at risk	582	517	396	188

Adjusted Survival

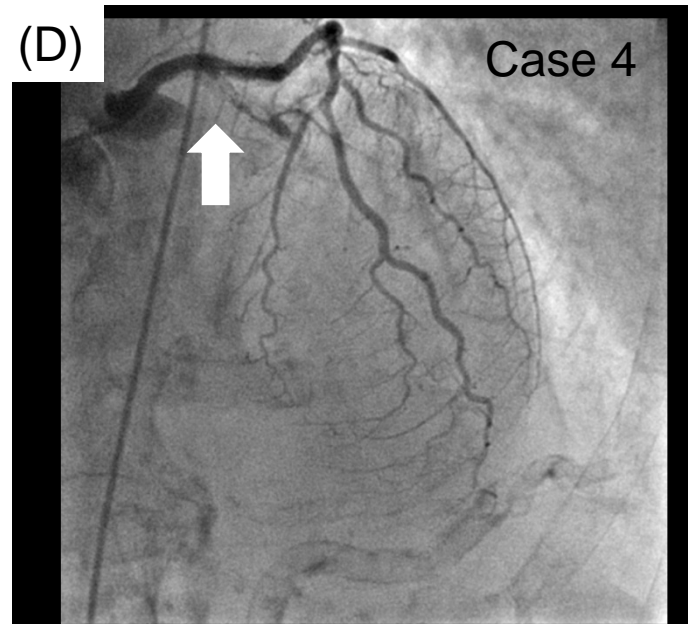
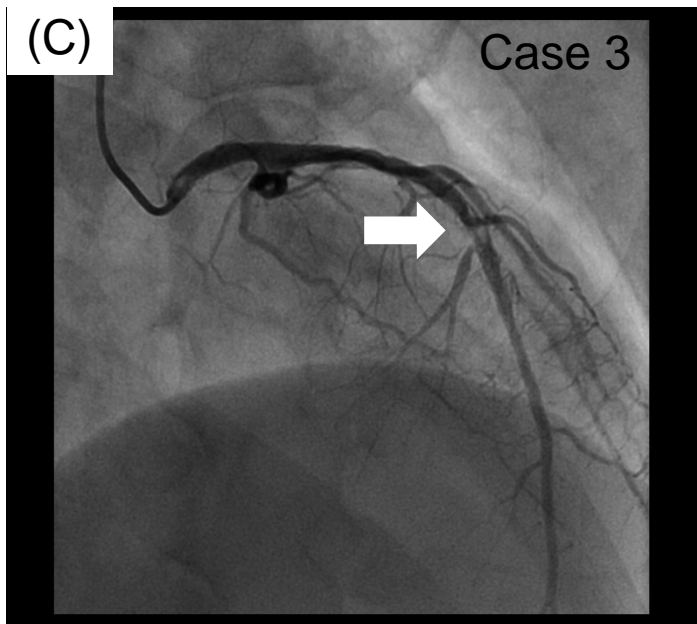
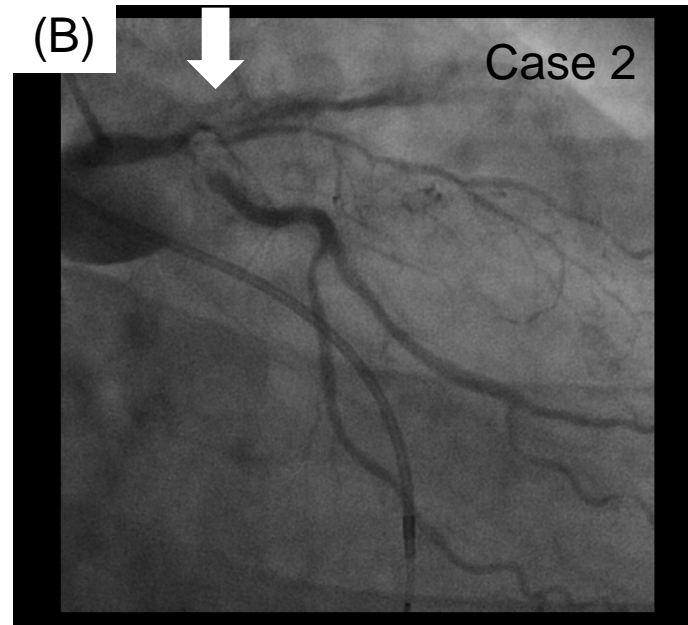
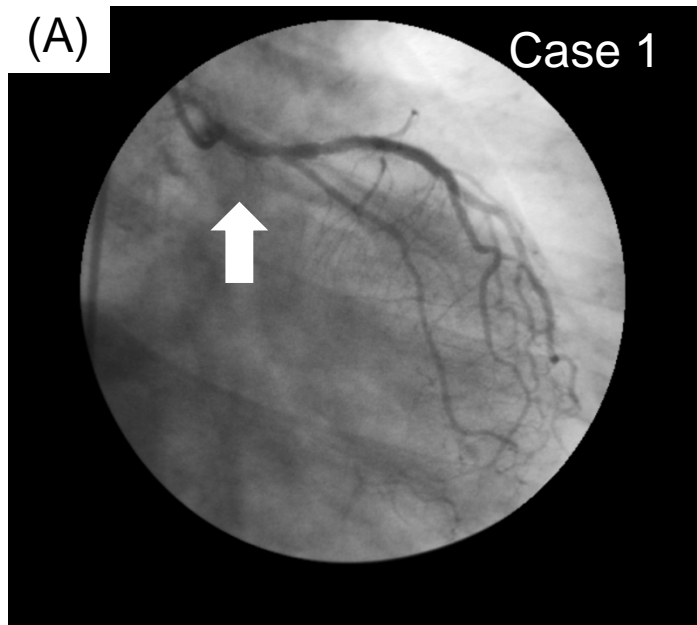


Interval(Days)	0	365	730	1095
Non-ULMCA				
Incidence (%)		2.1	4.1	6.1
ULMCA				
Incidence (%)		2.5	5.0	7.4

Causes of Death

	ULMCA (n=582)	Non-ULMCA (n=12242)	P
			0.35
Vf / Sudden death	15%	17%	
Heart failure	18%	16%	
Acute MI	11%	5.5%	
Bleeding	3.7%	3.4%	
Stroke	5.3%	9.3%	
Non-cardiovascular death	51%	52%	

Four Cases with Definite Stent Thrombosis

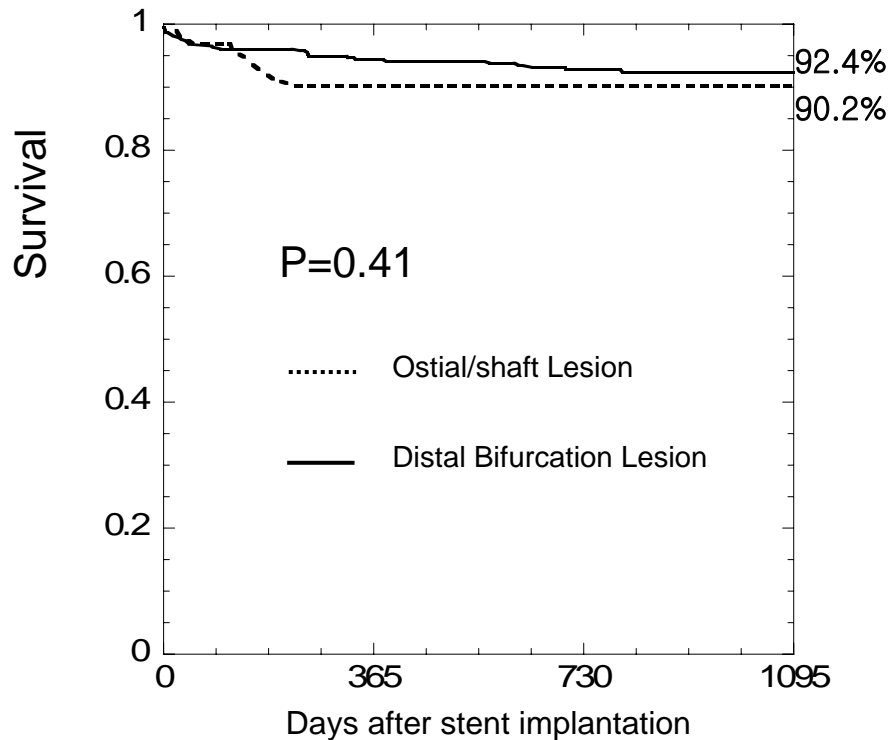


Lesion Location and Clinical Outcome

J-CYPHER Registry

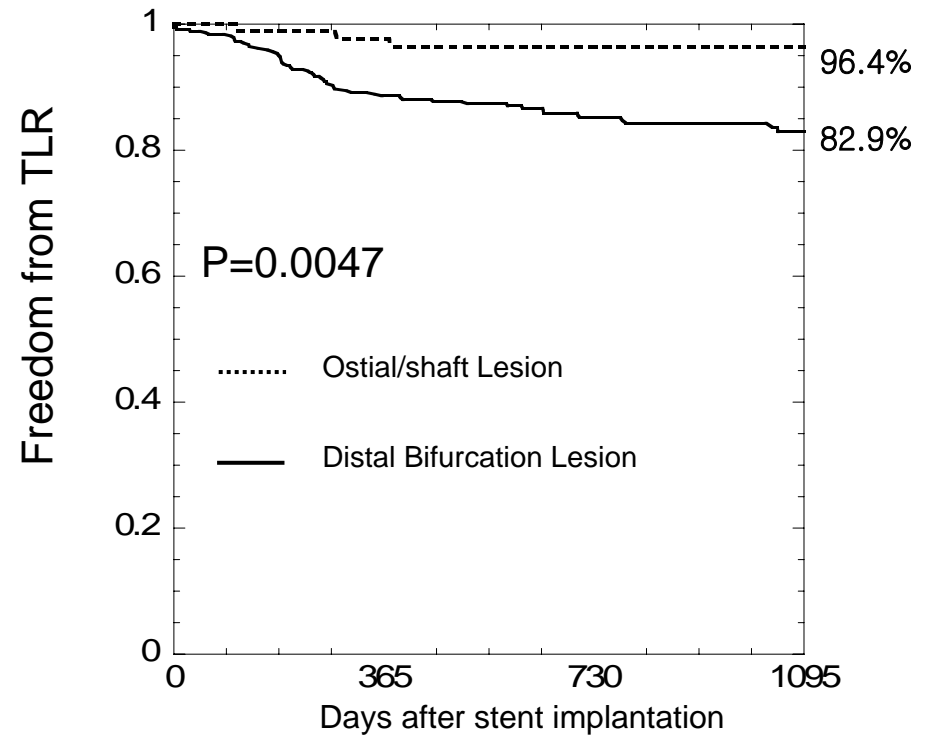
Ostial / Shaft versus Bifurcation

(A) Cardiac Mortality



Interval (Days)	0	365	730	1095
Ostial/Shaft				
Incidence (%)		9.8	9.8	9.8
No. at risk	96	82	65	22
Distal Bifurcation				
Incidence (%)		5.6	7.2	7.6
No. at risk	380	347	266	138

(B) Target Lesion Revascularization

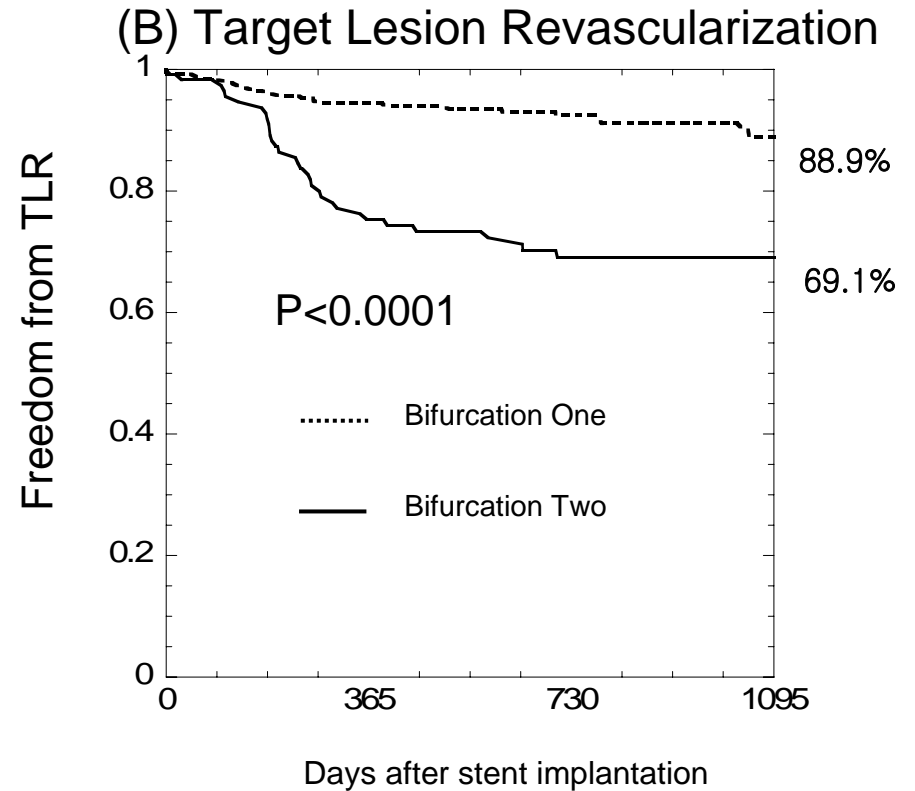
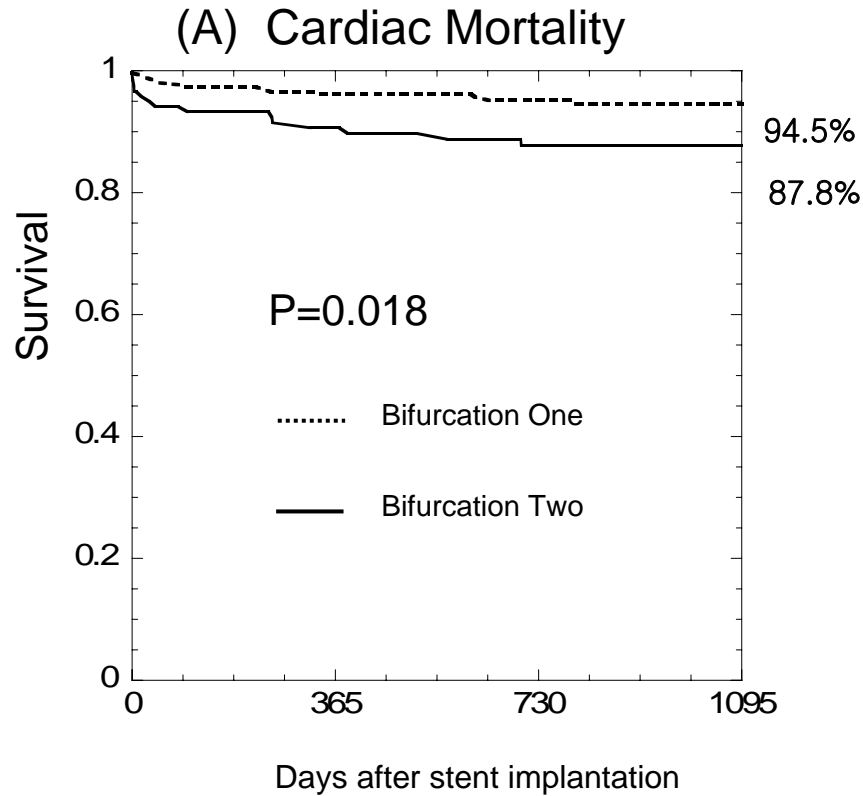


Interval (Days)	0	365	730	1095
Ostial/Shaft				
Incidence (%)		1.1	3.6	3.6
No. at risk	96	80	62	22
Distal Bifurcation				
Incidence (%)		11.4	14.8	17.1
No. at risk	380	309	222	113

Bifurcation Strategies and Clinical Outcome

PCI/HER Registry

One-stent versus Two-stents



Day	0	365	730	1095
Bifurcation One				
Incidence (%)		3.9	4.9	5.5
No. at risk	261	242	180	86
Bifurcation Two				
Incidence (%)		9.4	12.2	12.2
No. at risk	119	105	86	52

Day	0	365	730	1095
Bifurcation One				
Incidence (%)		5.6	7.6	11.1
No. at risk	261	229	161	76
Bifurcation Two				
Incidence (%)		24.6	30.9	30.9
No. at risk	119	81	62	37

Impact of Triple Vessel Disease

	ULMCA only	ULMCA+SVD	+DVD	+TVD	+CABG	P value
N	40	113	188	93	42	
Total Death (%)	21.4	11.2	14.0	21.7	9.5	0.15
Cardiac death (%)	2.5	7.3	7.8	15.1	0.0	0.033
Sudden Death (%)	0.0	1.9	1.7	3.5	0.0	0.56
MI (%)	4.4	2.1	4.9	5.6	0.0	0.57
Definite ST (%)	0.0	0.0	0.6	3.6	0.0	0.070
TLR (%)	2.6	7.1	18.7	18.9	15.6	0.027
Revascularization (%)	25.2	31.3	37.1	48.3	24.5	0.0016

Conclusions

- **In this study population, patients treated for ULMCA disease had highly complicated characteristics with high prevalence of elderly, renal failure, and heart failure.**
- **Crude survival rate was significantly lower in patients undergoing ULMCA stenting. However, adjusted survival rate was comparable between the two groups of patients with or without ULMCA stenting.**
- **While patients with ostial / shaft ULMCA lesion had excellent TLR rate, patients undergoing bifurcation 2-stent procedure as compared with those with 1-stent procedure had significantly higher rate of cardiac death and markedly higher rate of TLR.**

Bifurcation Strategies and Clinical Outcome ER Registry

One-stent versus Two-stents

	One-stent (n=261)	Two-stents (n=119)	P
All-cause Death	13.4%	18.8%	0.12
Cardiac Death	5.5%	12.2%	0.018
Sudden Death	0.8%	2.7%	0.15
MI	4.5%	4.7%	0.58
Definite ST	0.4%	2.8%	0.05
TLR	11.1%	30.9%	<.0001
CABG	0.9%	0.3%	0.15
Any Revascularization	35.5%	44.0%	0.017