

***MY WORST FATAL CASE IN THE CATH
LAB- LIFE JUST SLIPPED OUT ,
DID'NT EVEN GIVE ME TIME***

DR. SANDEEP BANSAL

***DM (Cardiology), DNB (Cardiology), MNAMS,
FESC, FSCAI, FAPSIC***

CONSULTANT IN CARDIOLOGY

PROFESSOR AND HEAD OF DEPARTMENT

Department of Cardiology

***Vardhaman Mahavir Medical College & Safdarjang Hospital ,
New Delhi – 110070***

INDIA

TCTAP SEOUL , 28TH APRIL 2015

THE CASE

- *A 45 yrs old female presented with*
- *Exertional Angina class II x 2 mths*
- *Hypertensive x 5 yrs --- controlled on drugs*
- *Type II DM x 4 yrs---- controlled on drugs*
- *Tobacco - NONE*
- *O/E*

B.P 110/75 mm Hg

P.R 78/ min regular

Systemic examination W.N.L

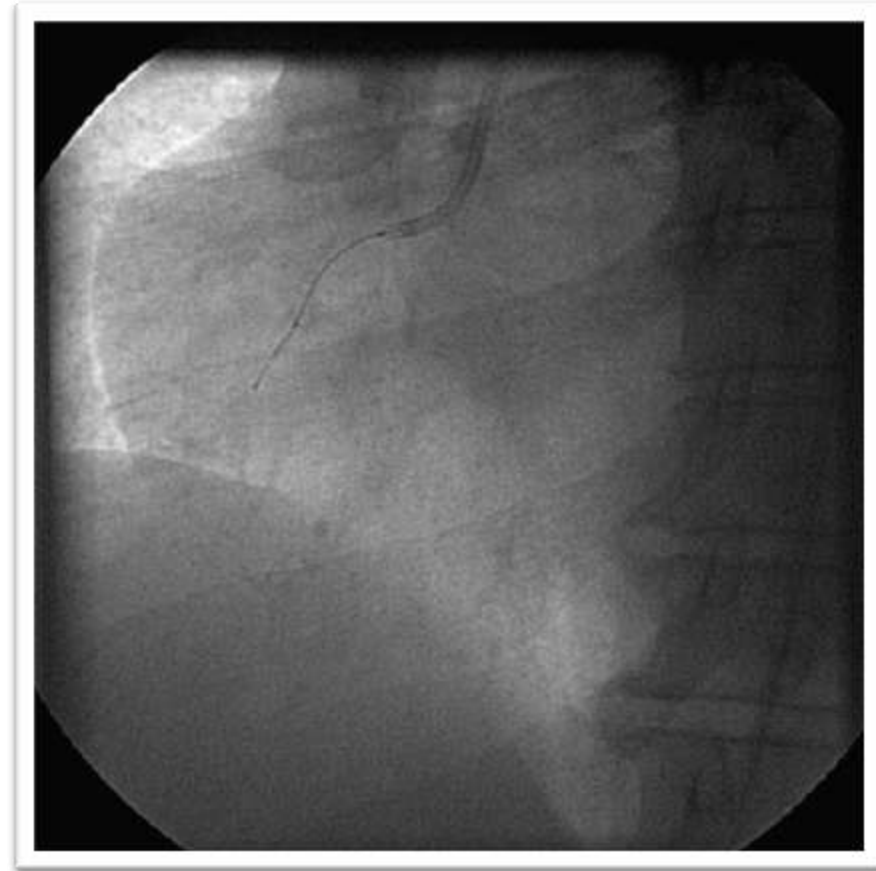
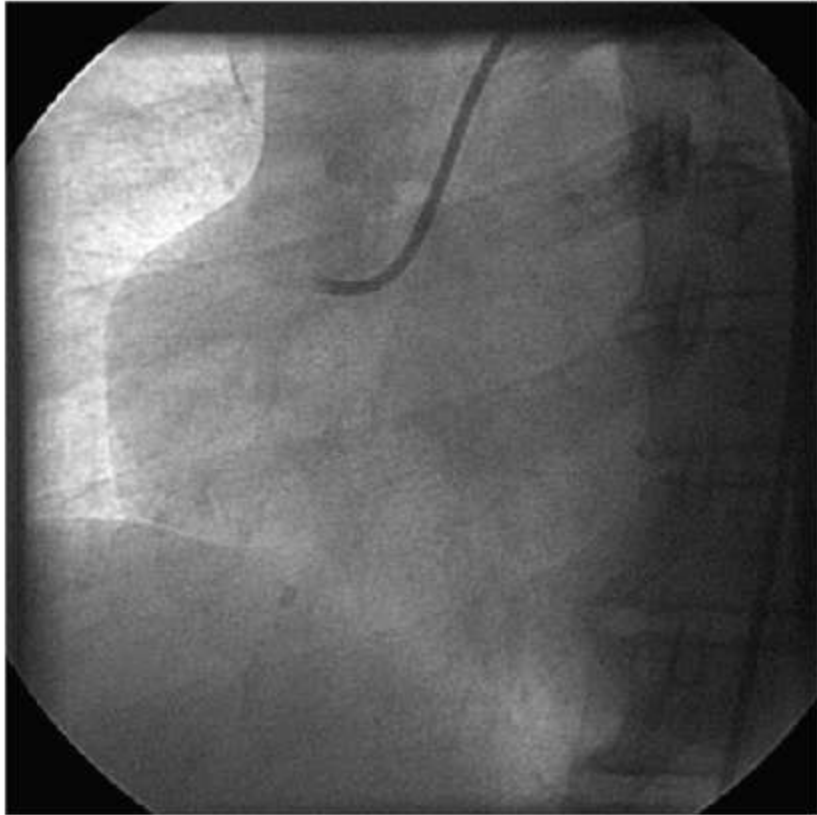
THE CASE

- *Hb 11.8 , TLC 7600*
- *S Creat. 0.6*
- *R.B.S 115*
- *MPI SCAN - stress induced reversible ischemia in Inferior wall, Lateral wall and apex .*
- *CAG 20/08/2014*
 - RCA -- Dominant vessel*
 - Mid 99% then 100%*
 - PDA and PLV filling from collaterals*
 - Rest WNL*

THE CASE- PTCA- 23.8.14

RCA -99% - 100% MID

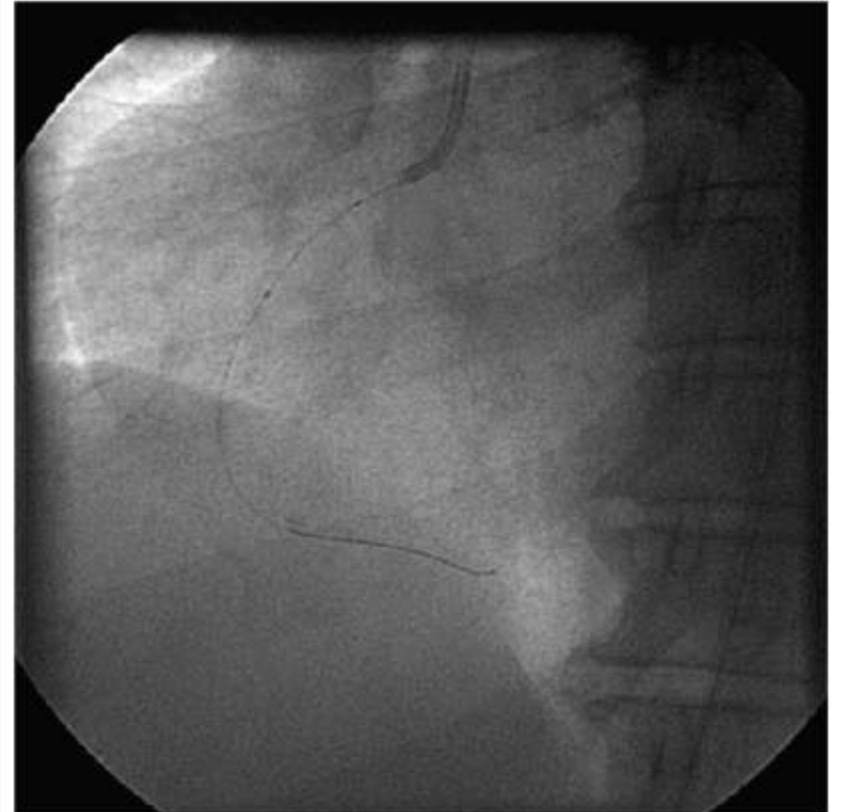
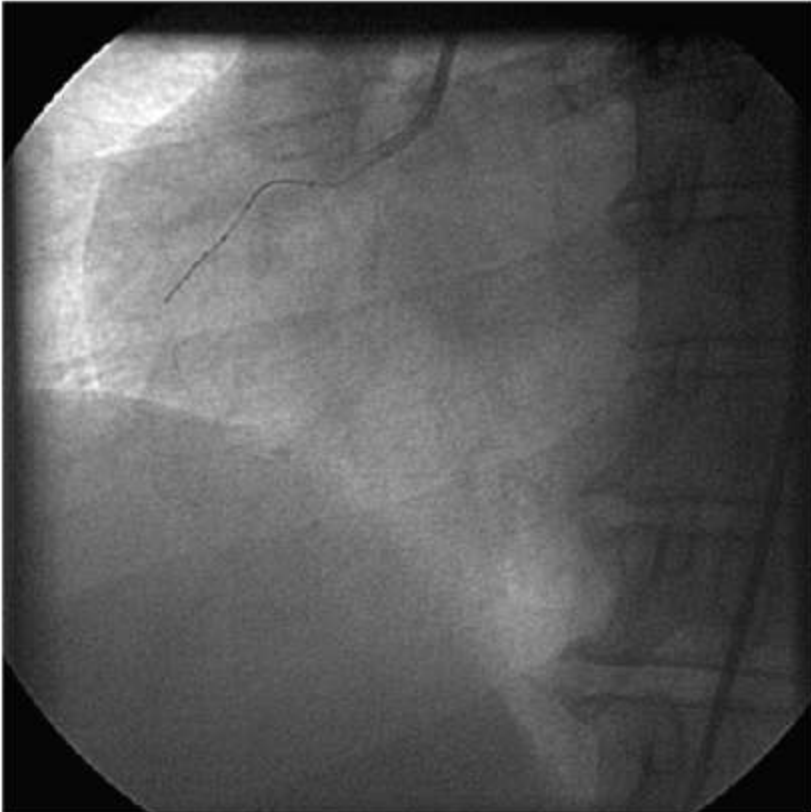
*ATTEMPTED WIRING WITH A WHISPER WIRE.
FAILED. WIRED WITH CROSS IT EXTRA 200 ON
BALLOON SUPPORT – 2X 20 MM SPRINTER*



THE CASE- PTCA- 23.8.14

*PROX. BALLOON INFLATED AS
WIRE/ SYSTEM BACKING OUT*

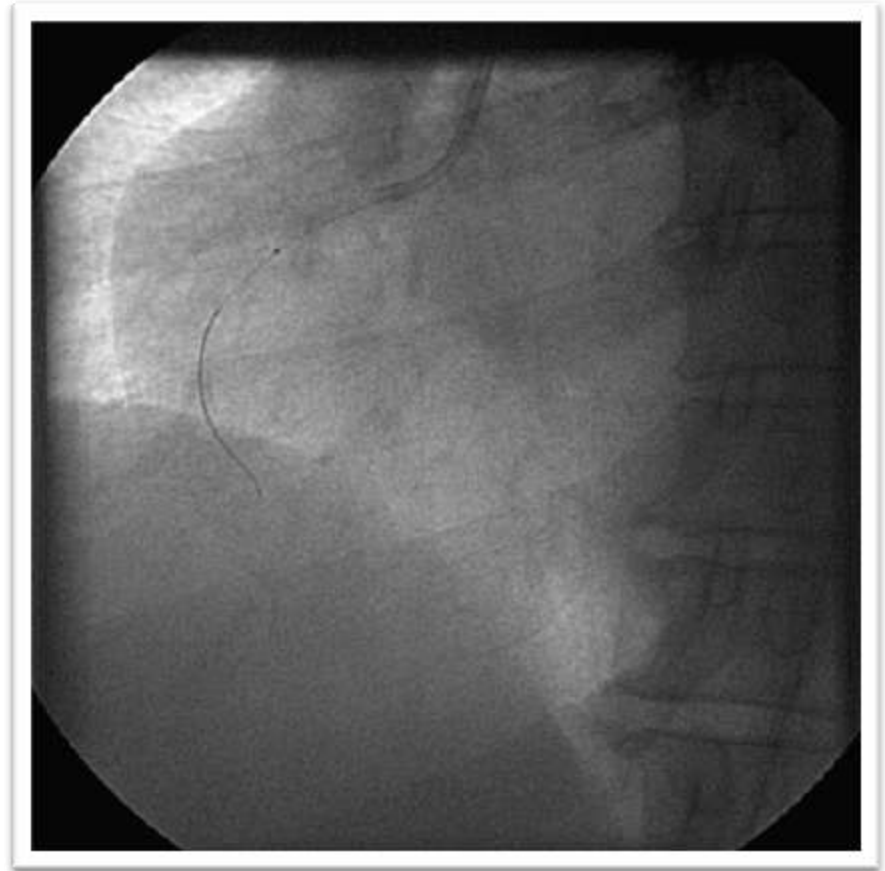
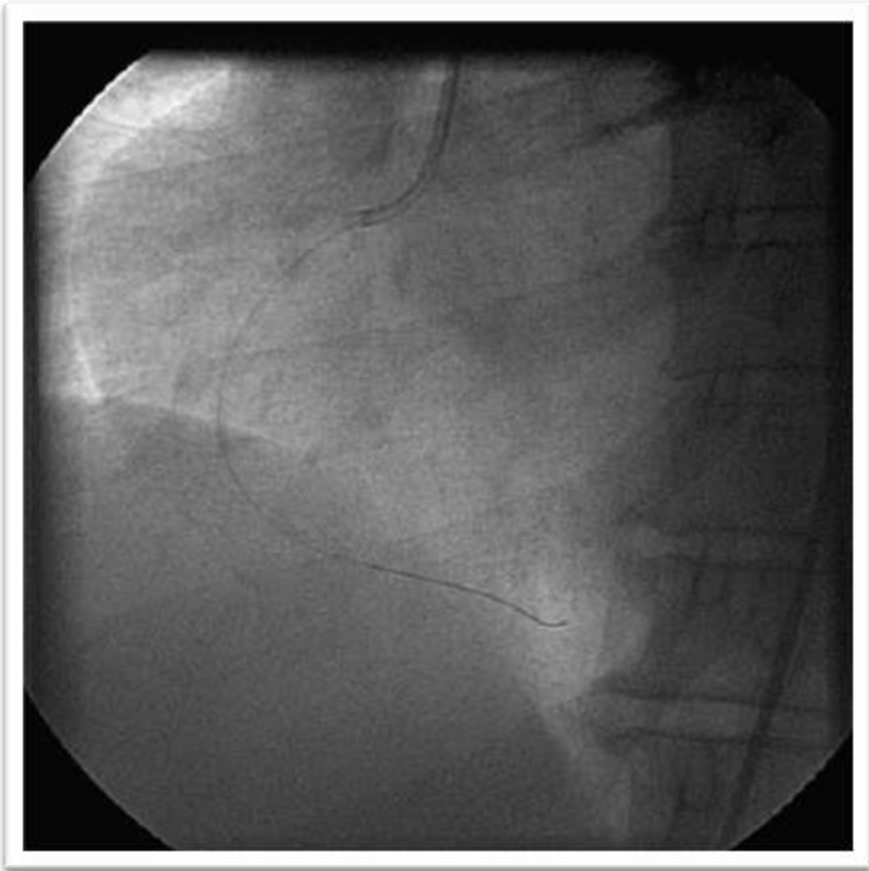
*ULTIMATELY WIRED WITH CROSS IT EXTRA
2000N BALLOON SUPPORT – 2 X 20 MM
SPRINTER*



THE CASE- PTCA- 23.8.14

*VIEW AFTER WIRING . TRIED TAKING 1.5 X
20 SPRINTER ,BUT IT WOULD'NT GO.*

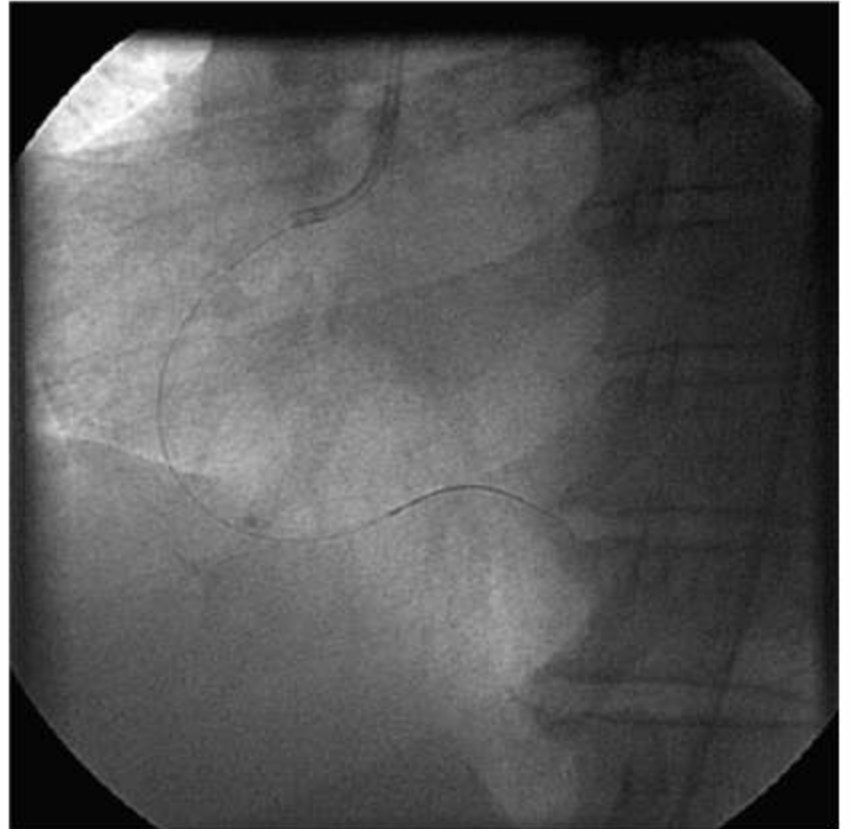
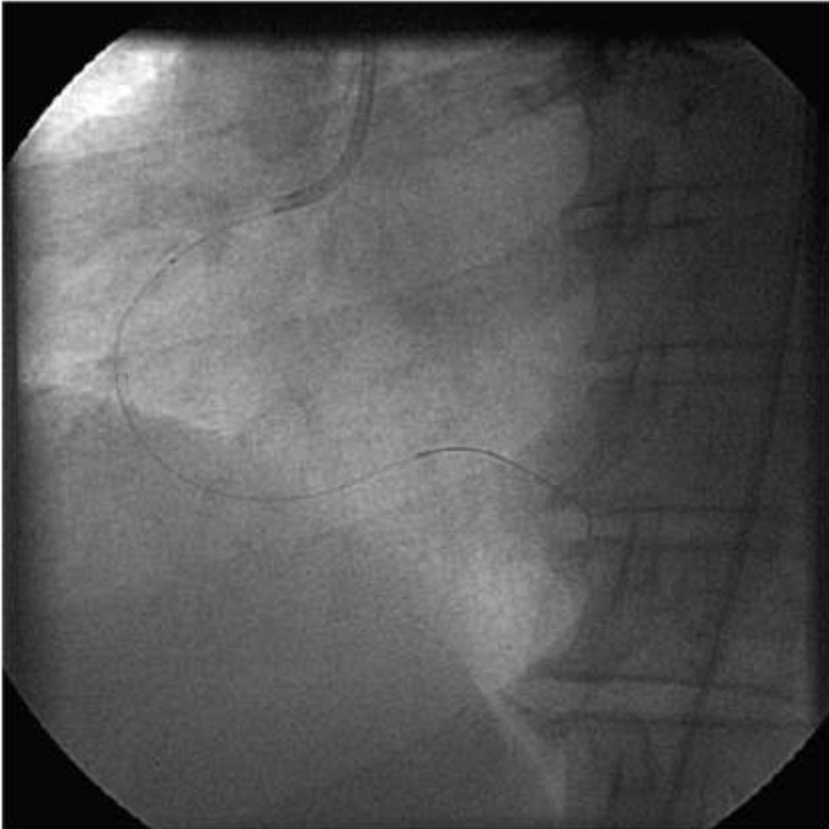
1.5 MM X 15 MM SPRINTER BROUGHT IN



THE CASE- PTCA- 23.8.14

*1.5 MM X 15 MM SPRINTER WOULD'NT GO
SO INFLATED – POSSIBLY A SPUR/ CALCIUM*

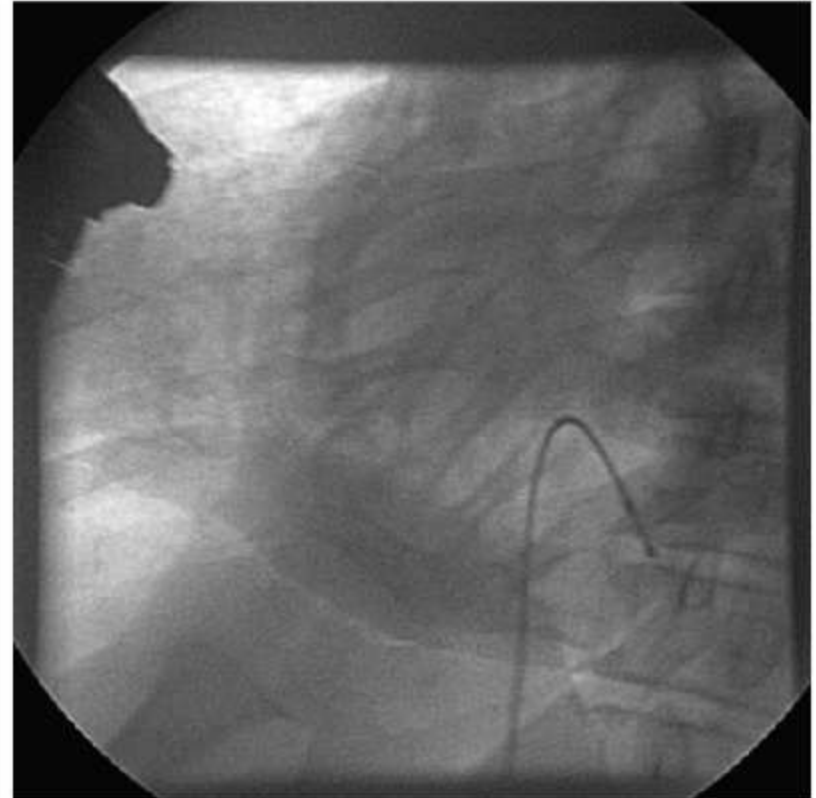
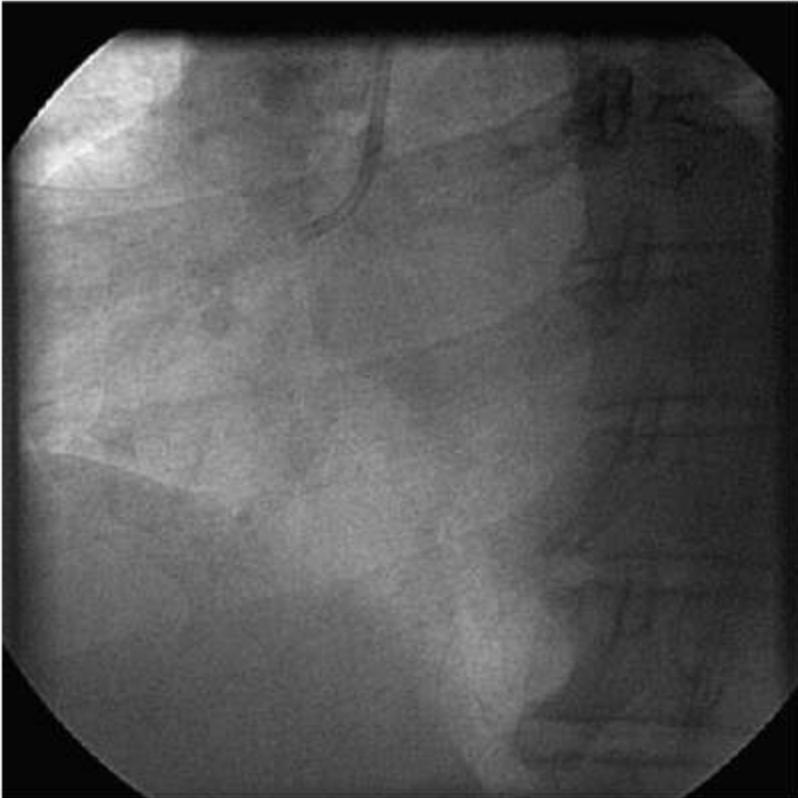
*NO ADVANTAGE OF THE DILATION . NO
PERFORATION / COMPLICATION THUS
FAR*



THE CASE- PTCA- 23.8.14

*CALCIUM ?? ABANDONE/ SEND ACROSS TO
AIMMS FOR ROTABLATOR. PATIENT STABLE SO
FAR*

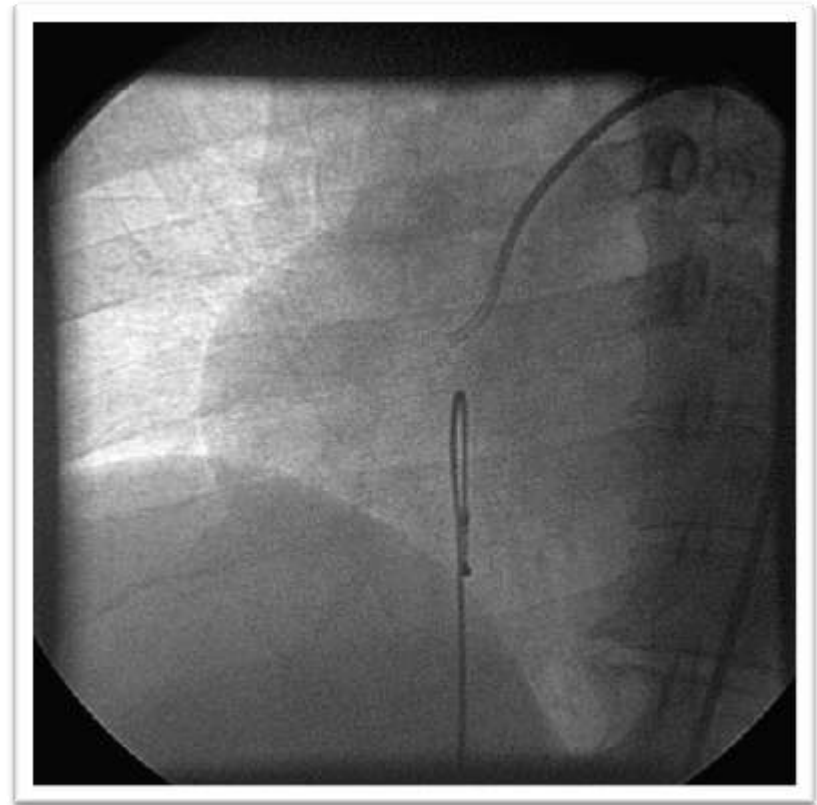
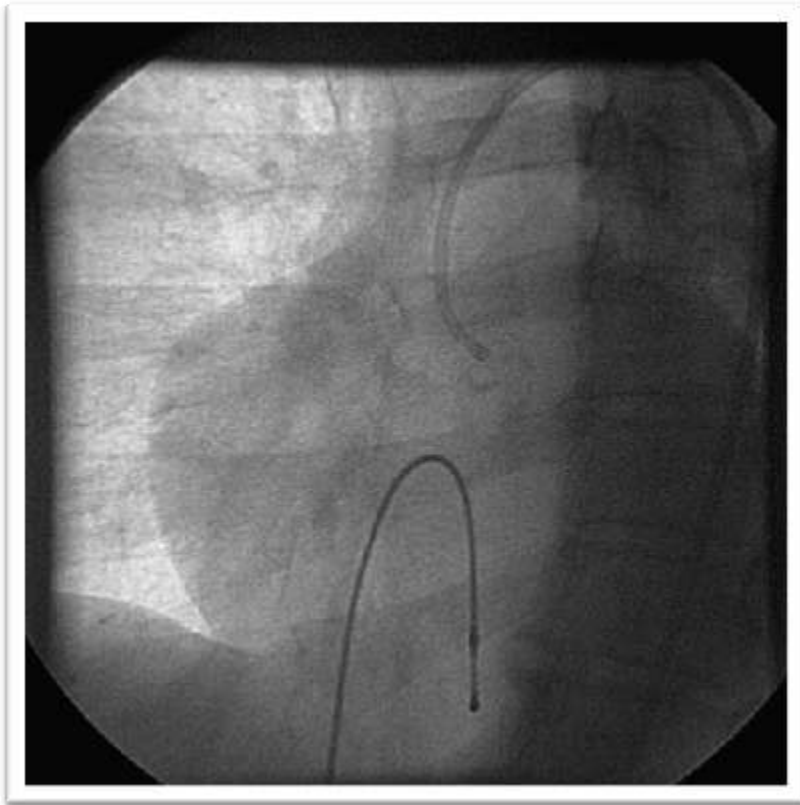
*SINUS BRADY FOLLWED BY ARREST . TPI
IN . CPR STARTED*



THE CASE- PTCA- 23.8.14

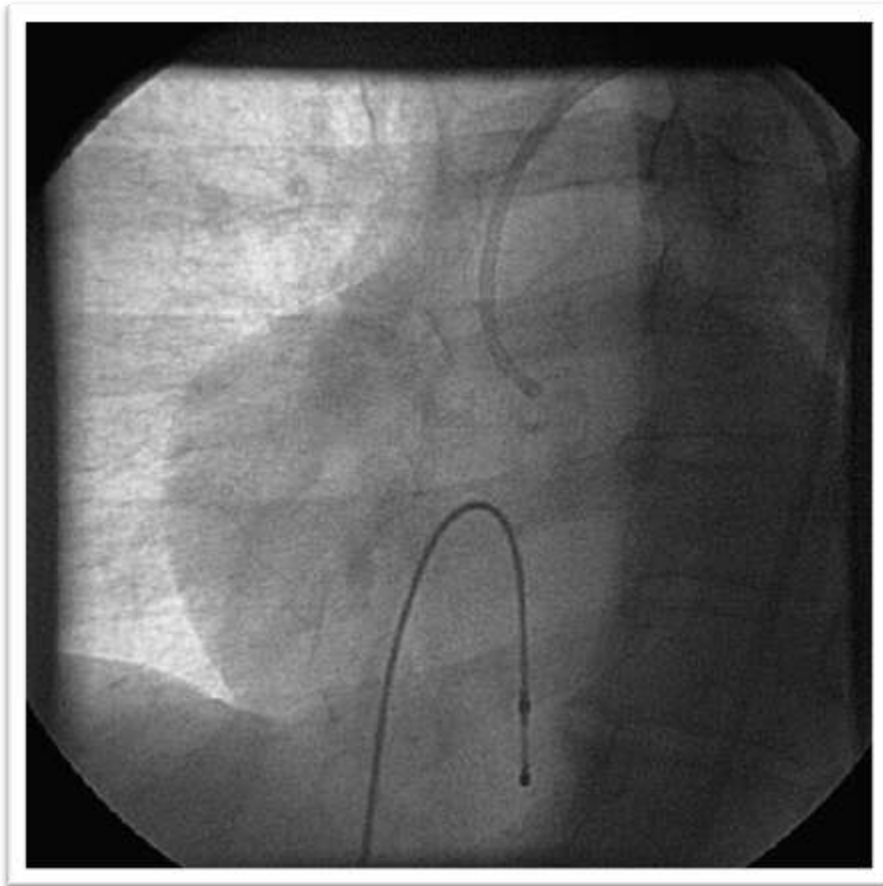
*NO AVAIL . PERICARDIAL TAP- NOTHING. ECHO
- NO COLLECTION*

NO LEAK



DIED

THE CASE- PTCA- 23.8.14



DIED

THE CASE- PTCA- 23.8.14 – WHY SHE DIED ?

- *NO PERFORATION*
 - *ECHO/ ANGIO/ DRY TAP*
- *PROLONGED HYPOPERFUSION POST ARREST-
NO*
- *PLAQUE SHIFT INTO SINUS NODAL ARTERY*