

**Two-vessel simultaneous CTOs caused
by ISR after DESs implantation
: Successful antegrade revascularization
using 6Fr. Guiding catheter via trans-radial
approach.**

Presenter: Dong-Kie Kim, M.D.

Operator: Doo-Il Kim, M.D., Dong-Kie Kim, M.D.

**Inje University Haeundae Paik Hospital
Busan, Korea**

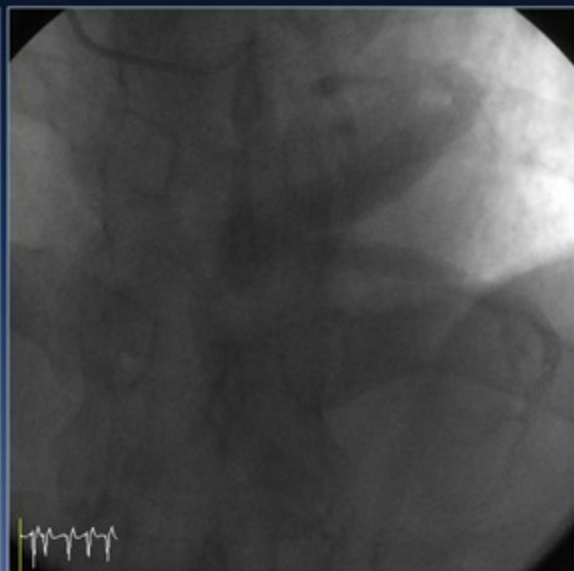
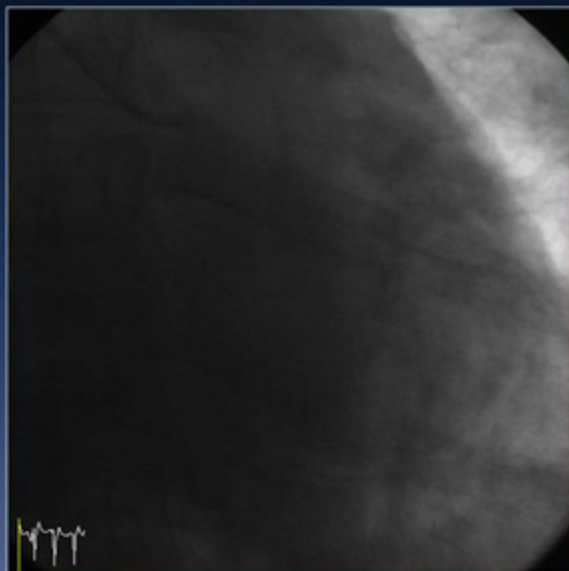


61-Year Old Male

CC	Effort chest pain (CCS II), DOE
D	6 months ago
RF	DM(-), HTN(-), Smoking(-)
PMHx	Previous PCI at LAD and LCX 5 years ago <i>LAD: SES 3.0*33 mm</i> <i>LCX: SES 3.5*28 mm, SES 2.75*33 mm</i>



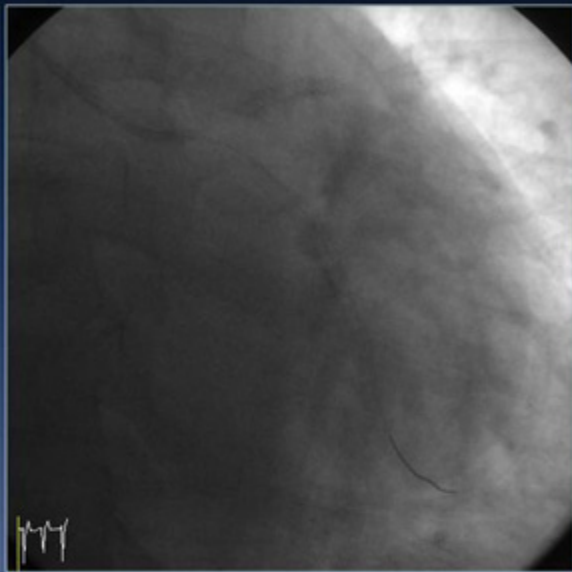
5 Years Ago...



5 Years Ago...



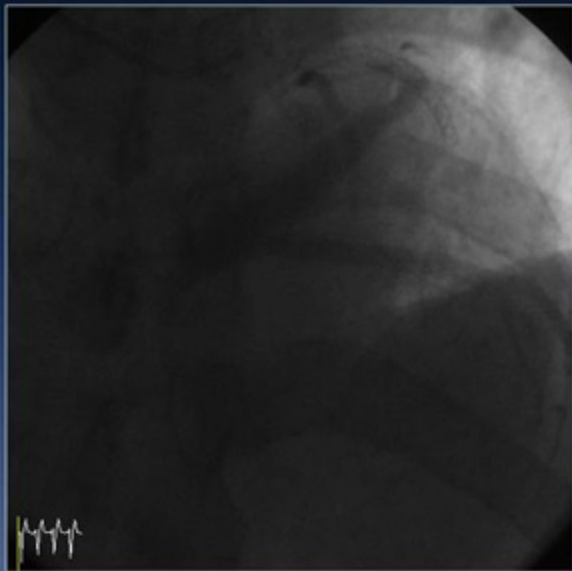
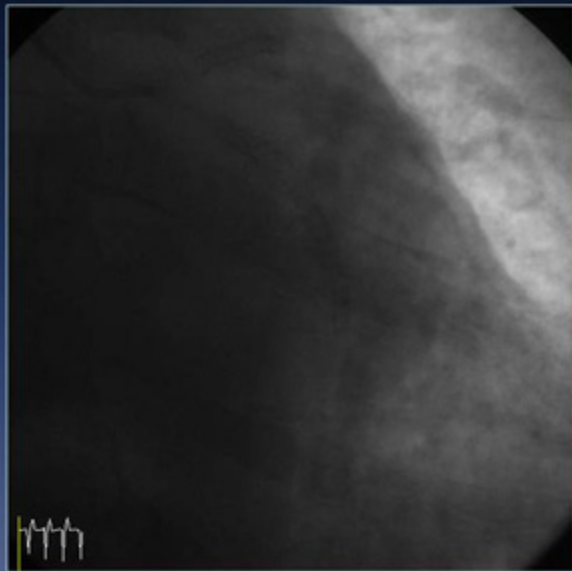
DES: 3.0x33 mm (Cypher, Cordis)



DES: 2.75x33 mm (Cypher, Cordis)
3.5x28 mm (Cypher, Cordis)



Routine FU Coronary Angiogram



61-Year Old Male

Medication



Lab

CK-MB 1.1 ng/mL, Tnl 0.02 ng/mL
proBNP **182** pg/mL, LDL97 mg/dL,
HbA1c 6.2%

TTE

No RWMA, EF 69.1%

Stress test

Not Done



Electrocardiogram

Referred by:

Newly Acquired



25mm/s 10mm/mV 150Hz 7.1.1 12SL 239 CID: 18

EID:Newly Acquired EDT: ORDER:

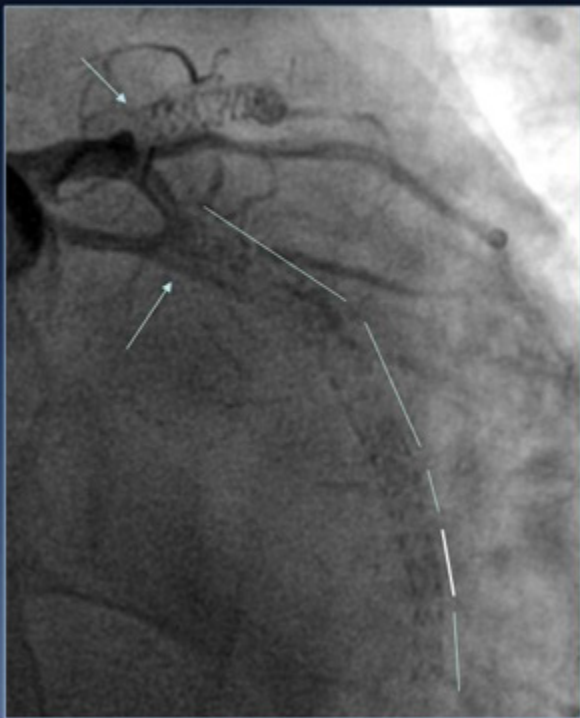
Page 1 of 1



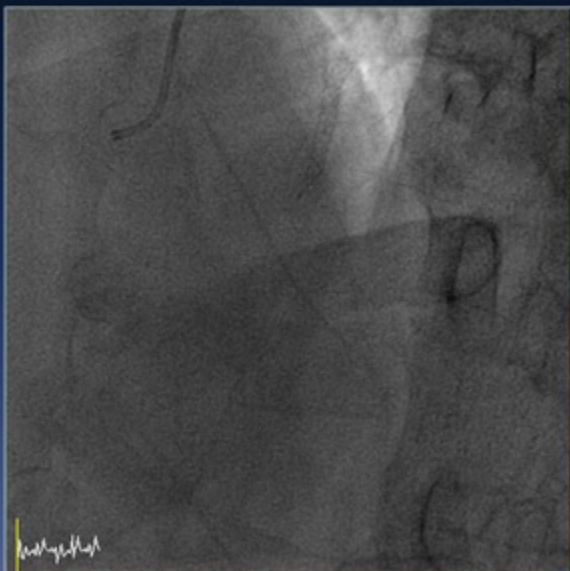
Baseline Left Coronary Angiogram



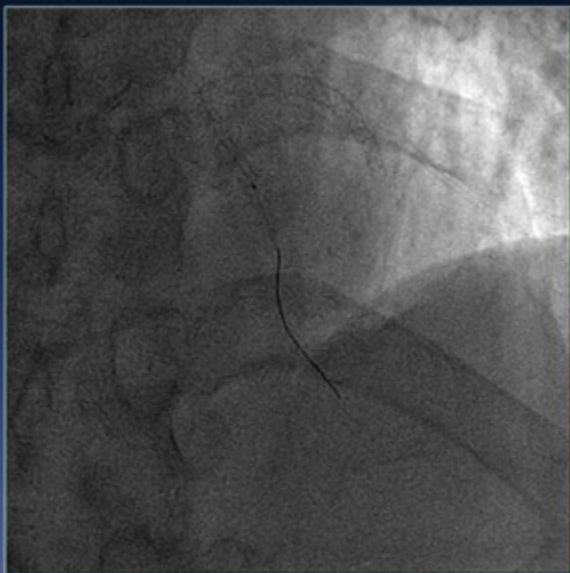
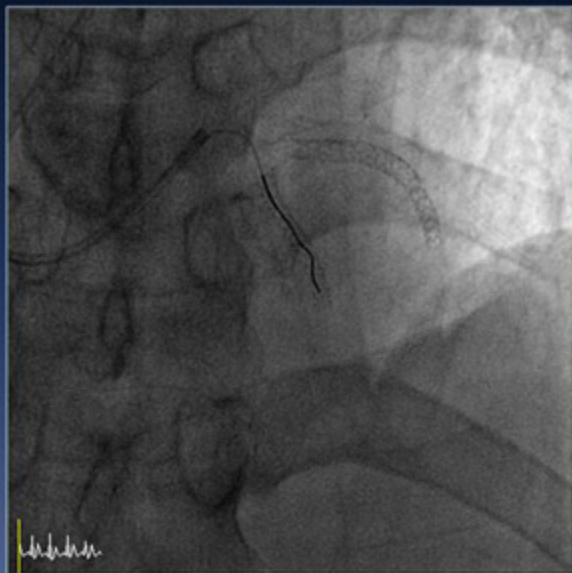
Multiple Stent Fractures, LCX



Baseline Right Coronary Angiogram



LAD CTO Intervention



**Guiding: XB 3.5 SH 6Fr (Cordis), via left trans-radial approach
LAD – Fielder XT (ASAHI), Fielder FC (ASAHI)**



Sequential Balloon Dilatation

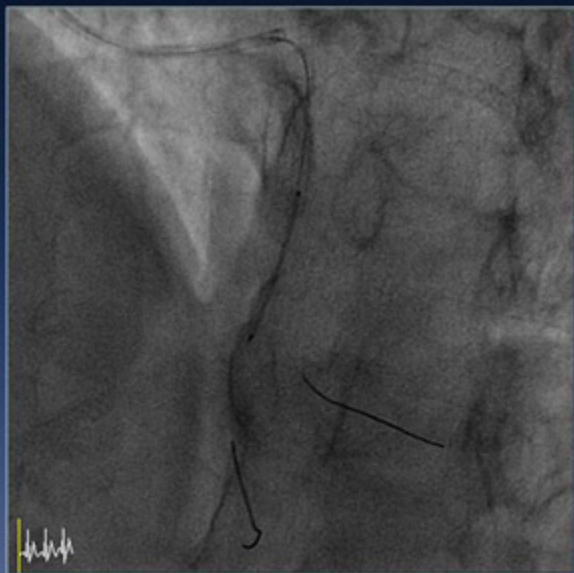


Wire: BMW (Abbott), Runthrough (Terumo)

Balloon – 1.2x15 mm, 18 atm (mini Trek, Abbott), 2.0x20 mm, 18 atm (mini Trek)

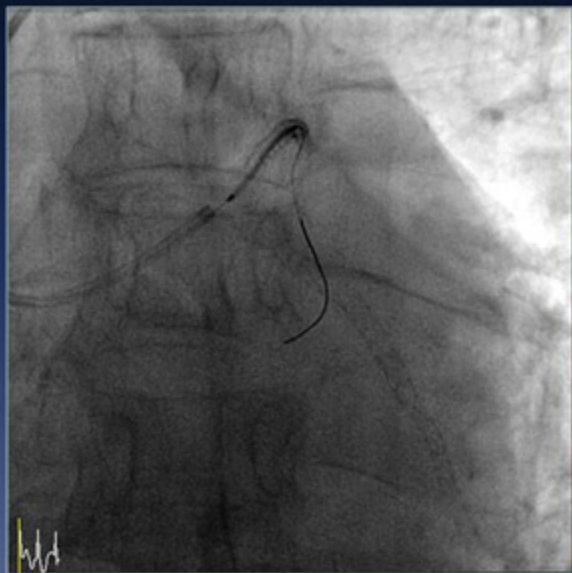


LAD CTO Intervention

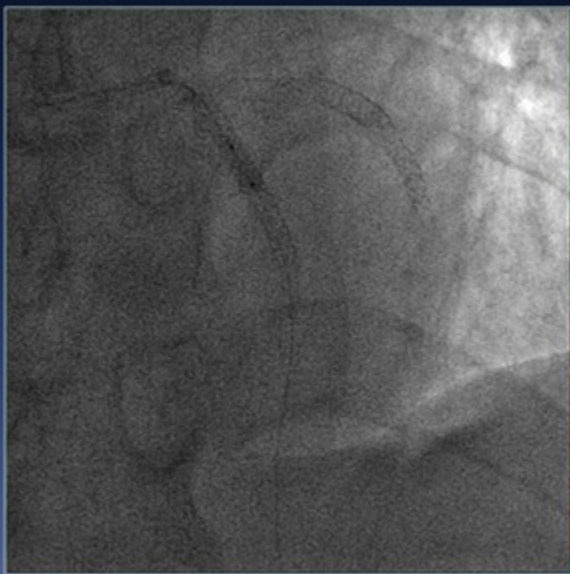


mLAD: 2.25x28 mm, 18 atm (Xience prime, Abbott)

pLAD: 3.0x38 mm, 18 atm (Xience prime, Abbott)



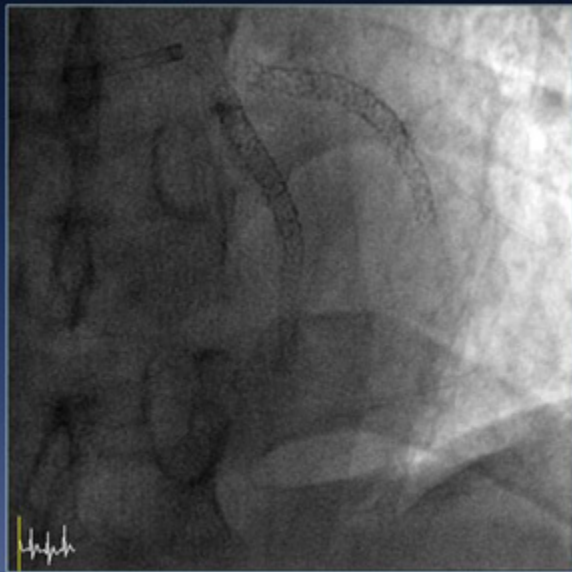
Post Dilatation with NC Balloon



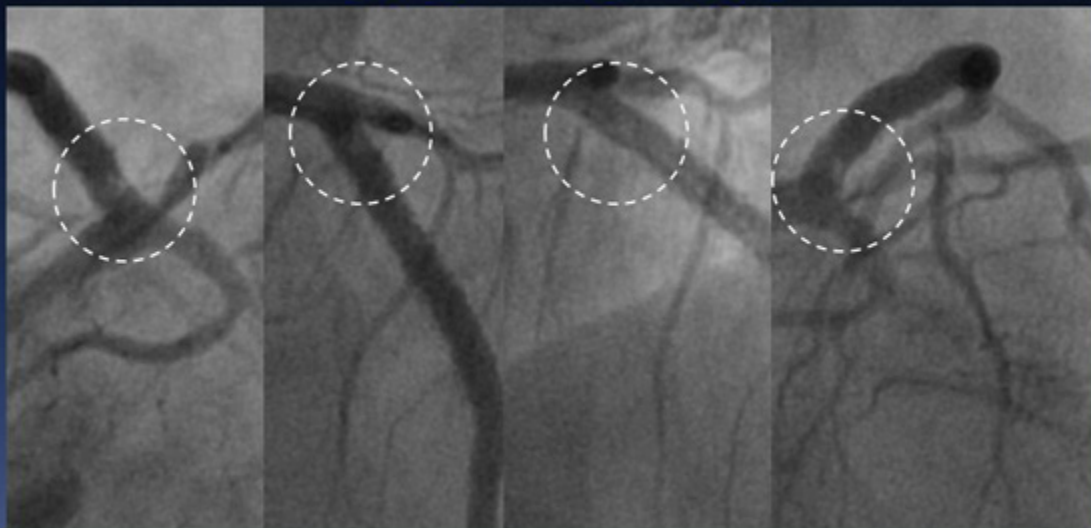
Postdil.: NC 3.0x8 mm, 24 atm (Voyager NC, Abbott)



Well Expanded, but..



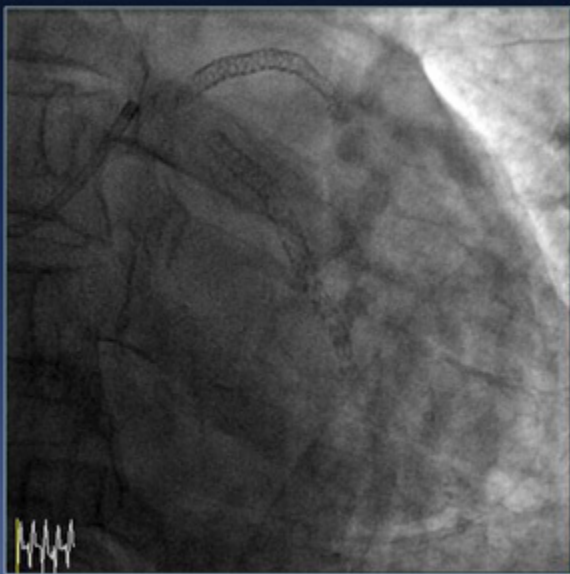
Acute Thrombus



- **GP IIb/IIIa inhibitor**
- **Unfractionated heparin**
- **Triple antiplatelet agents**



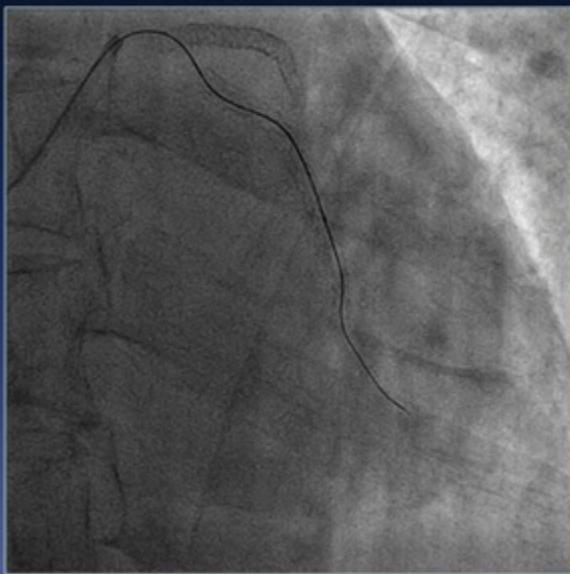
3 Weeks Later...



Guiding: XB 3.5 SH 6Fr (Cordis), via right trans-radial approach



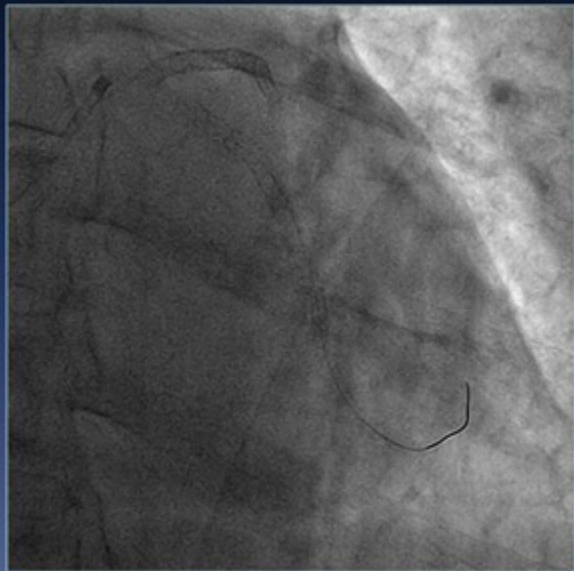
Remained LCX CTO Intervention



Wire: Fielder XT → Miracle 6g → Fielder XT



Using Microcatheter

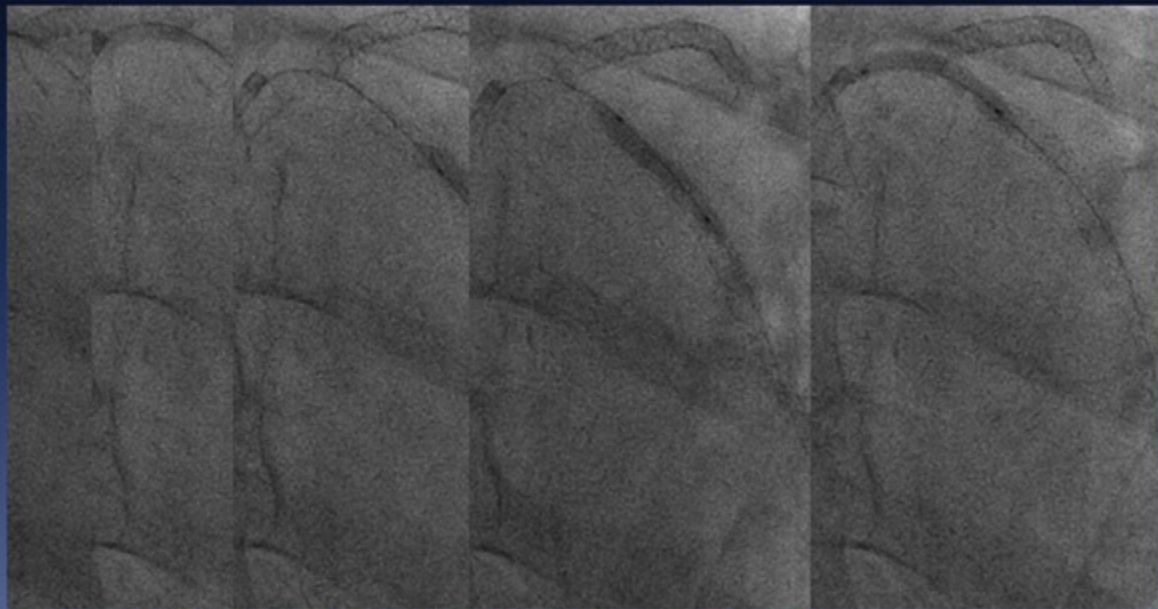


Wire: BMW (Abbott)

Balloon: 1.0x10 mm, 12 atm (Falcon, Invatec)



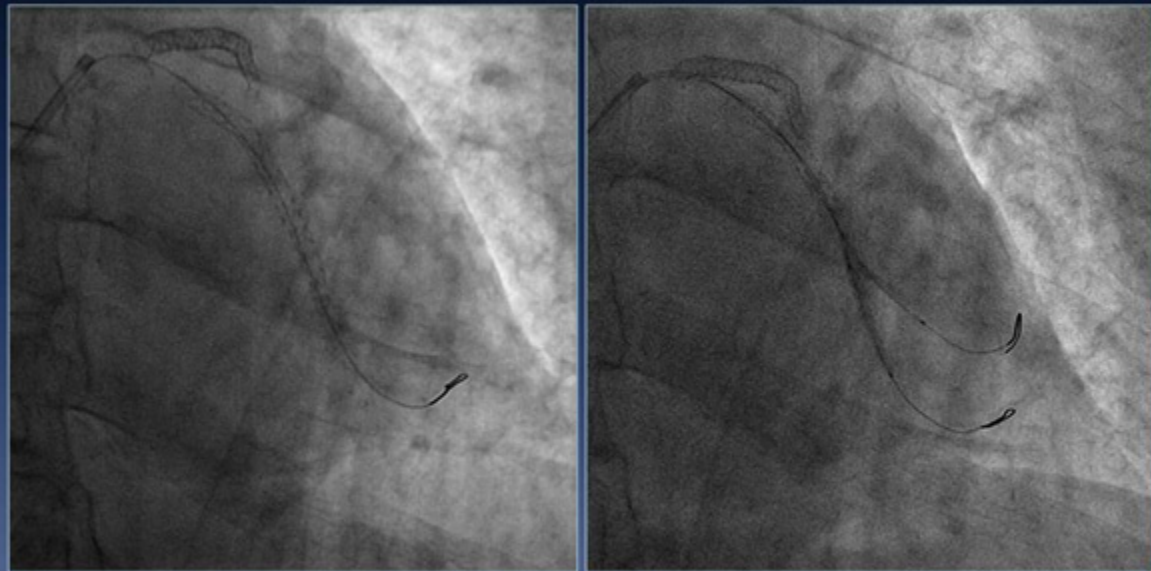
Sequential Balloon Dilatation



Balloon: 2.0x20 mm (mini Trek), 2.5x20 mm (Ryujin)
2.75x20 mm (Falcon), 18 atm



Kissing Balloon



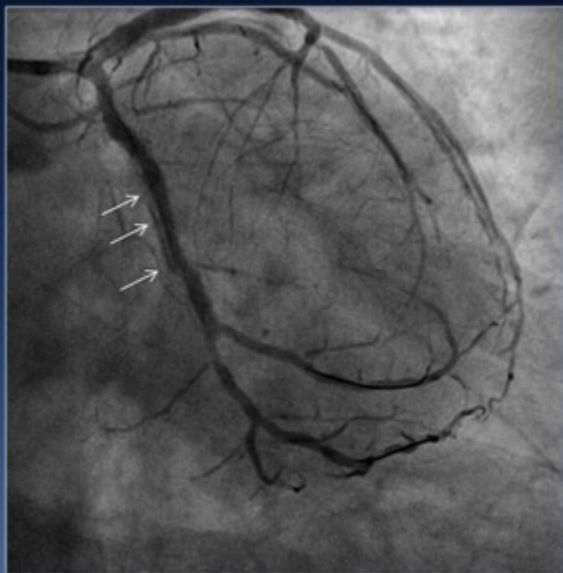
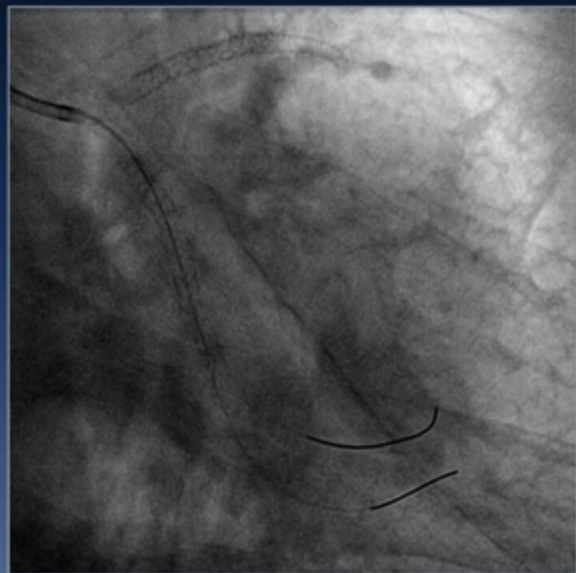
dLCX: 2.0x20 mm, 7 atm (mini Trek, Abbott)

OM: 2.0x20 mm, 7 atm (mini Trek, Abbott)

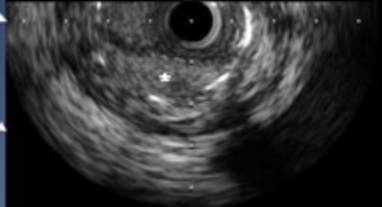
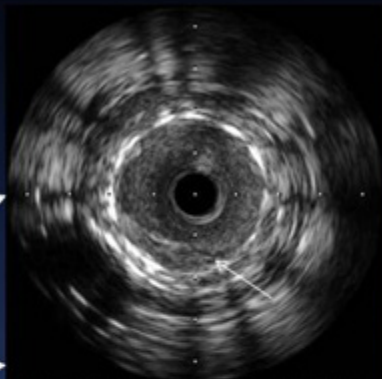
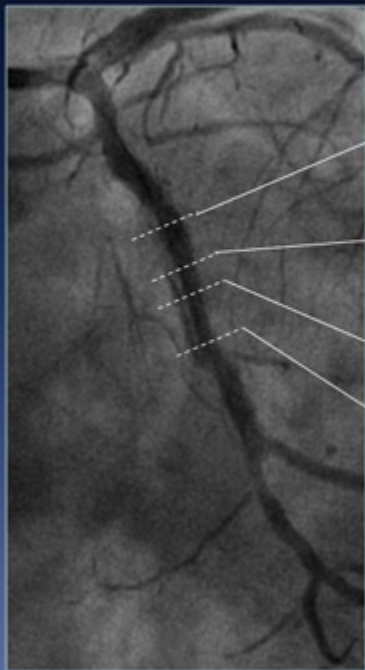
pLCX: 2.75x20 mm, 20 atm (Falcon, Invatec)



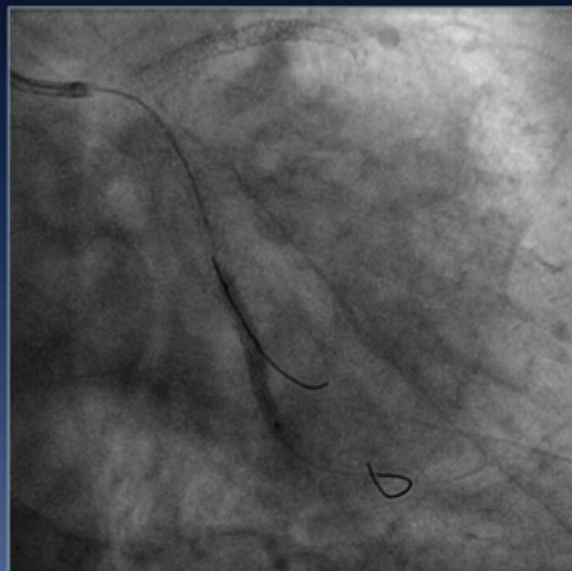
LCX Intervention Results



IVUS



LCX Intervention

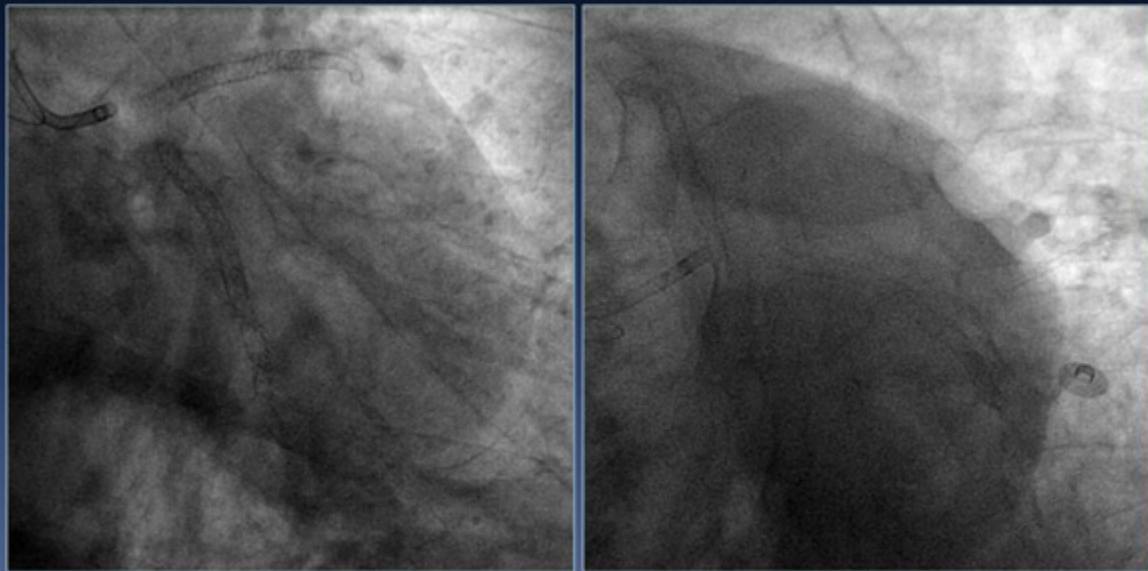


DES: 2.5x22 mm, 16 atm (Endeavor R I, Medtronic)

DES: 3.0x38 mm, 9 atm (Endeavor R I, Medtronic)



Final Results



Final Results

