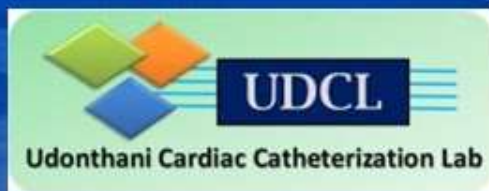
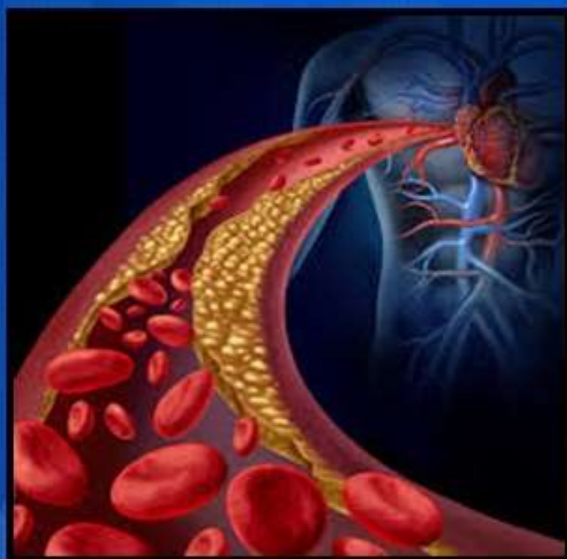


CIAT @ TCTAP 2016 session

Look simple but too complex



April 26th , 2016
Anuchit Wongphen,
Interventional Cardiologist
Udonthani hospital, Thailand

Case Scenario

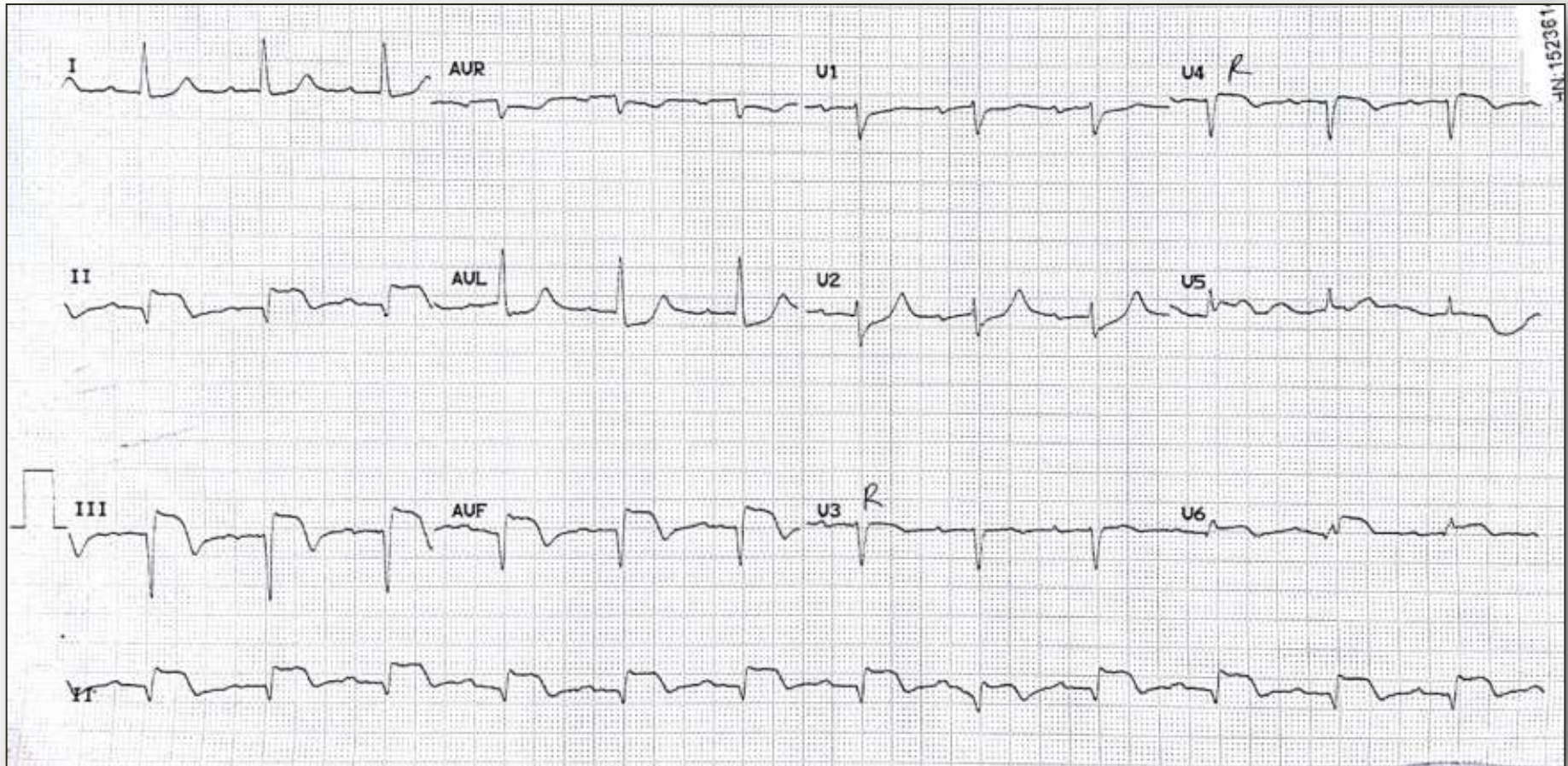
September 30, 2015

Male , 68 year-old

- **Present at Udonthani hospital (7.32 pm)**
- **Rest angina for 4.5 hour (3.00 pm)**
- **BP = 168/71 mmHg**
- **Risk factors: Hypertension**



ECG at presentation



Evolving infero-posterior STEMI

September 30, 2015

Primary PCI in PCI capable center

Total Ischemic Time

352 min

276 min

22 min

54 min

Time to FMC

FMC = First medical contact

Transfer
(DIDO)

Open artery

D2B within 60-90 min



Transradial STEMI-PCI

Left coronary angiography (5F/ JL3.5)



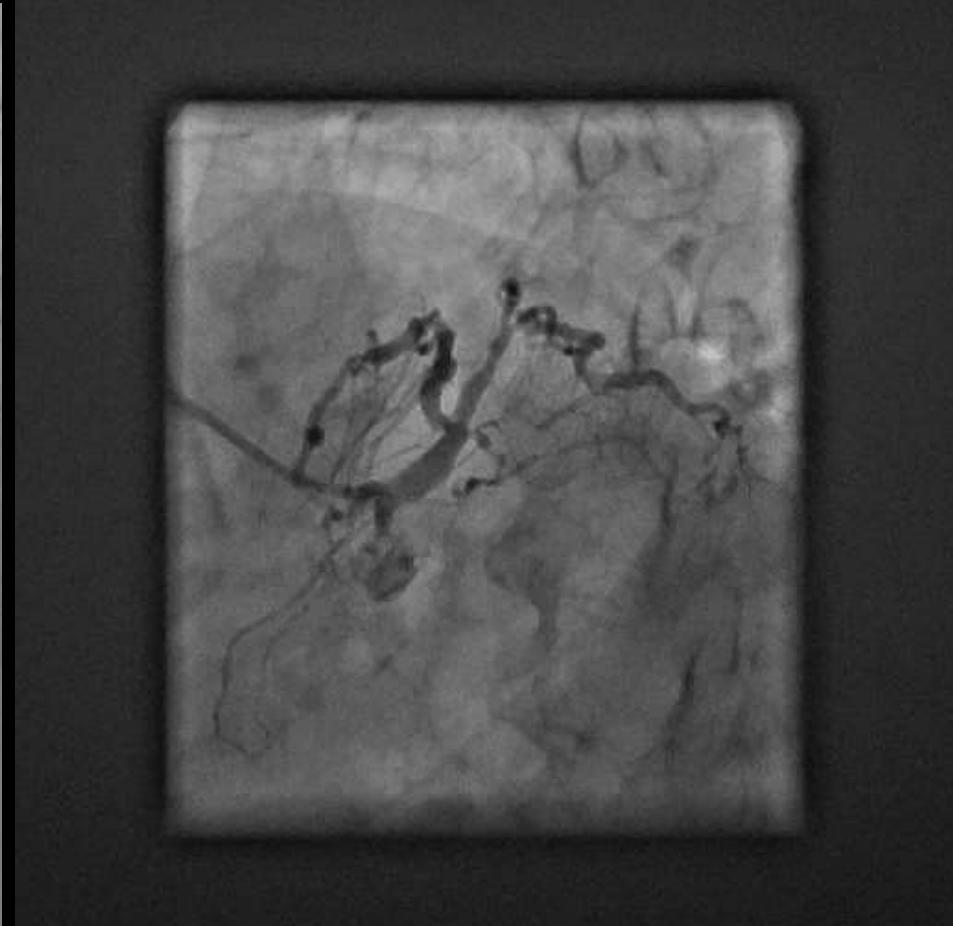
Radial artery angiography



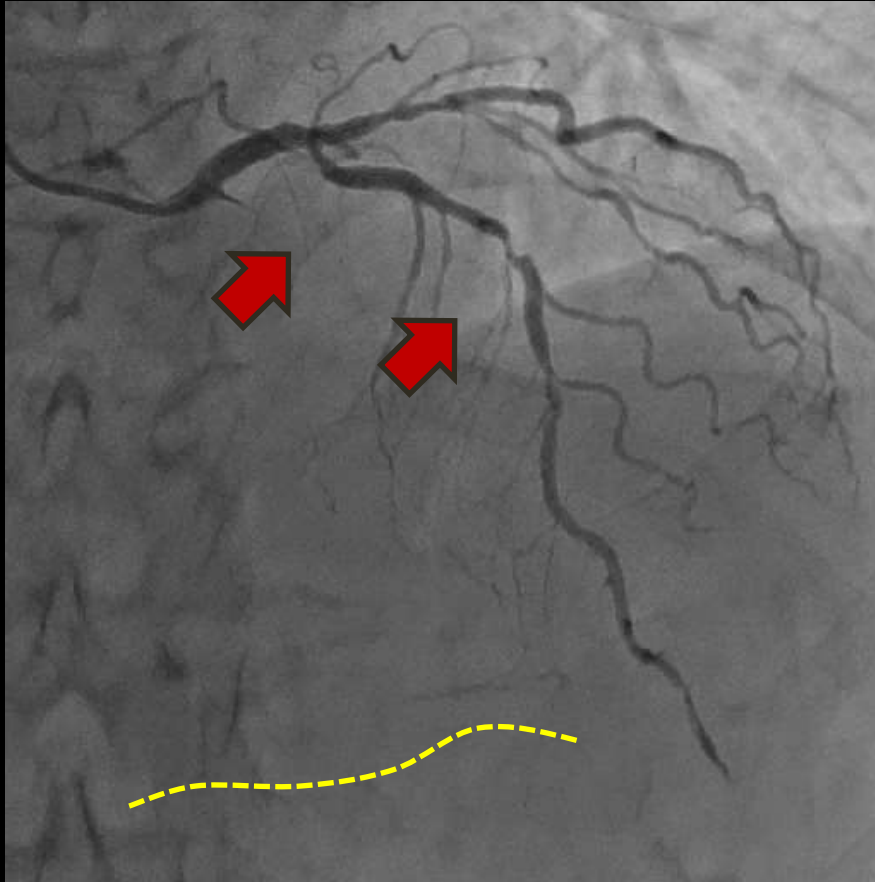
Diffuse diseases of small LCX

Transradial STEMI-PCI

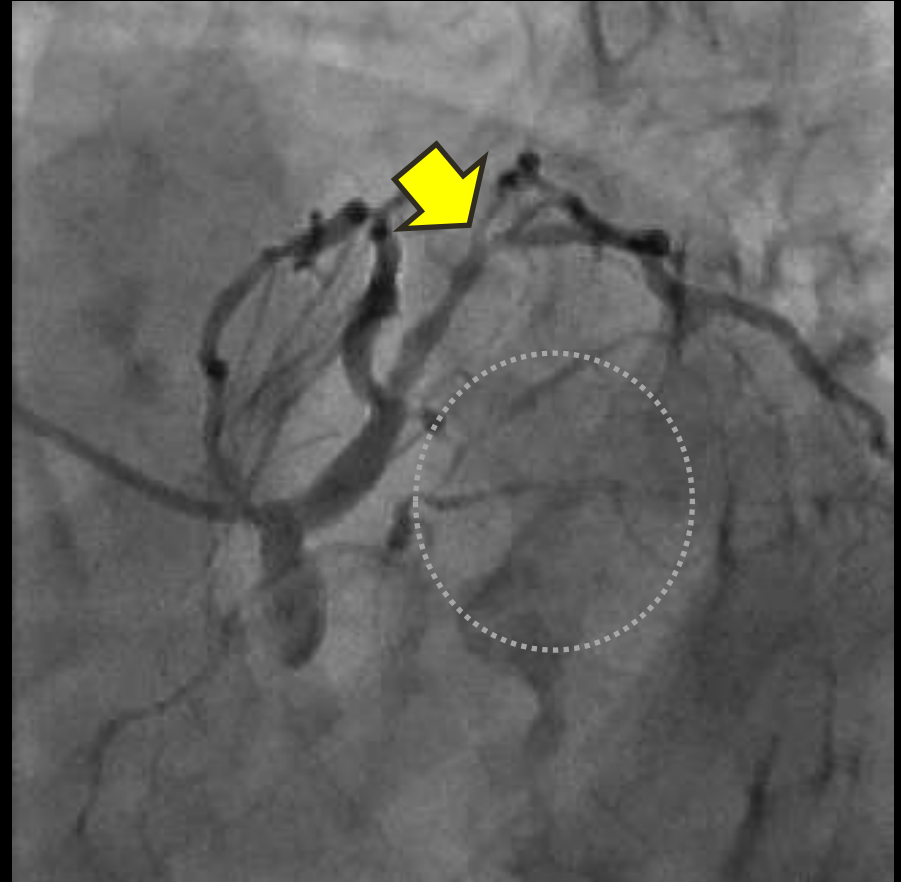
Left coronary angiography (5F/ JL3.5)



Left coronary angiogram

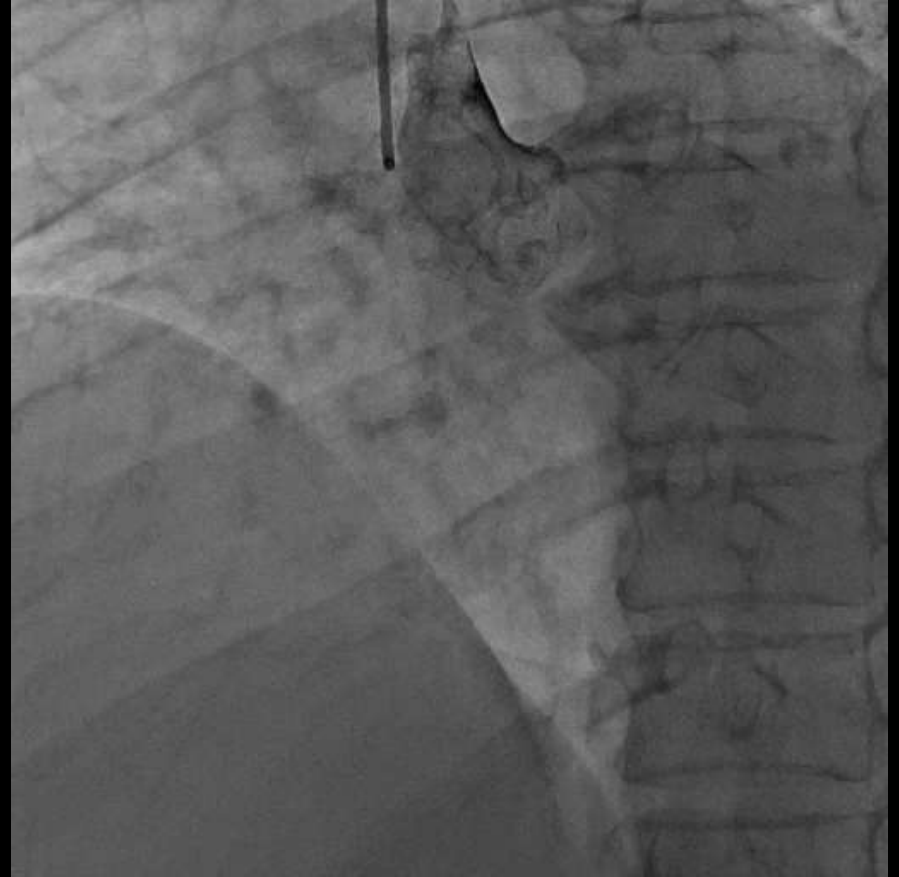
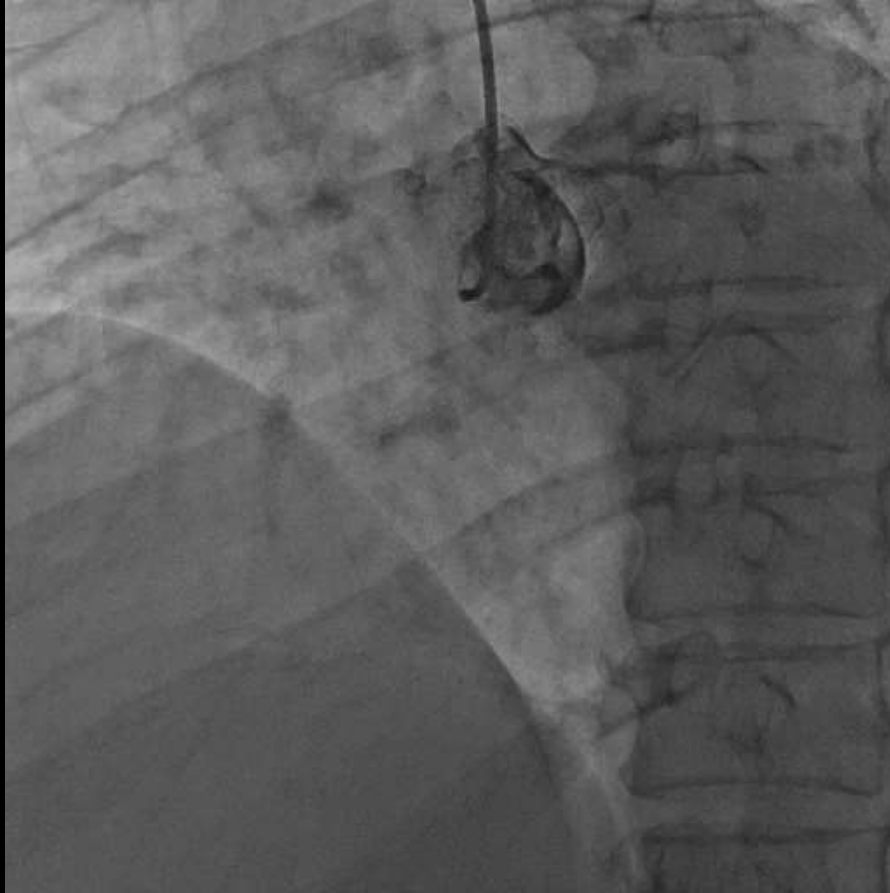


***Focal disease of ostium + mid LAD
Collateral flow to RPD***



***Moderate stenosis of ramus
Diffuse diseases of small LCX***

Where is my RCA ?



Where is my RCA ?



What we should do next ?

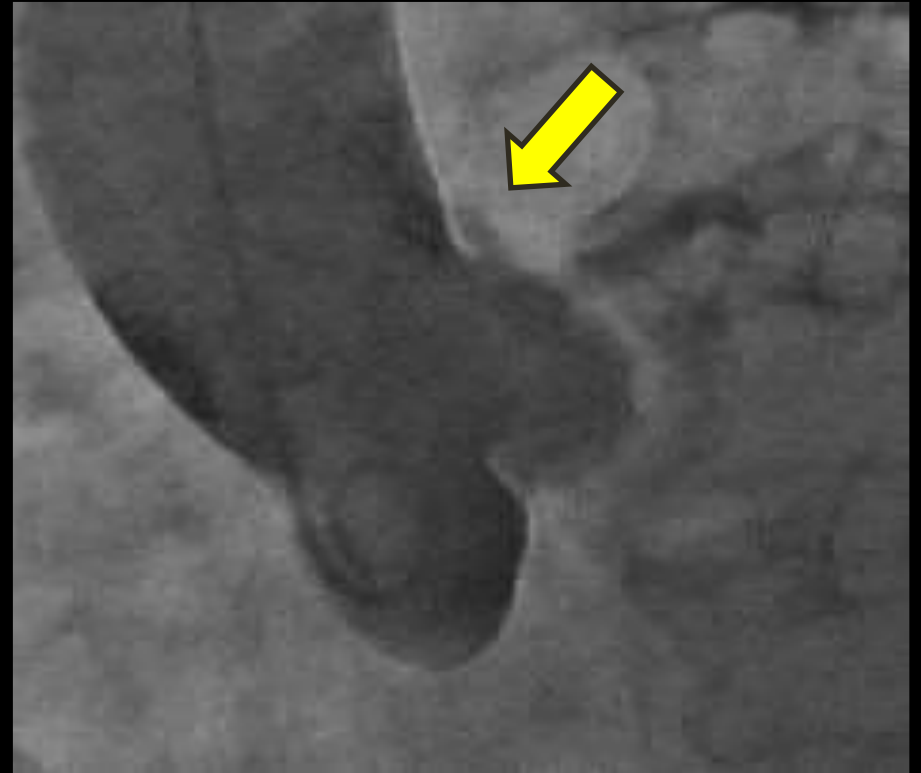
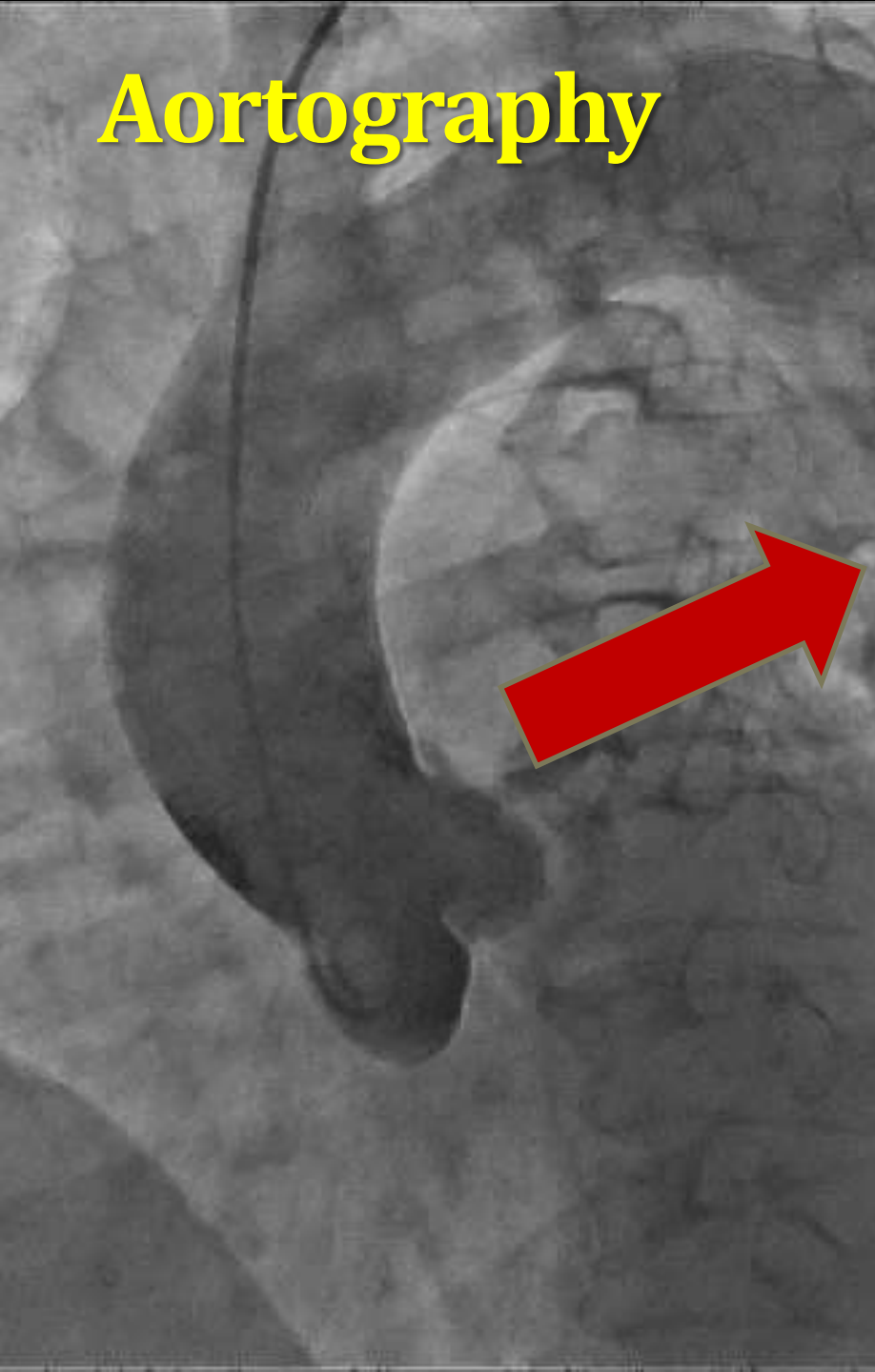
- A) Enough; conservative management***
- B) Perform aortography or CTCA***
- C) Perform retrograde PCI via LAD-SP***
- D) Send him for CABG (3V-CAD)***



- yes
- no
- maybe



Aortography



**Anomalous RCA from LCC
With proximal occlusion**

What guide catheter you choose?

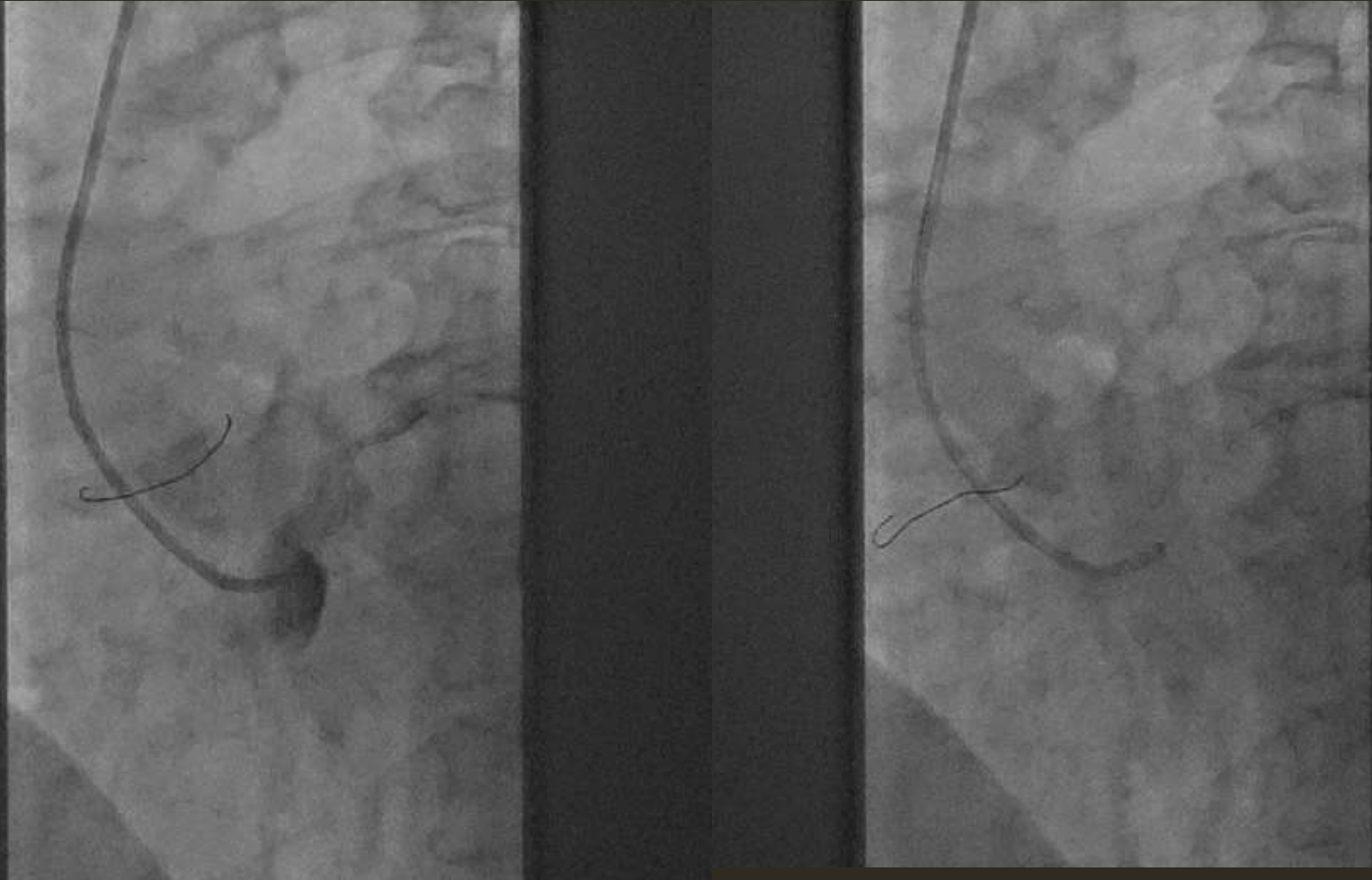
What guide catheter did you select ?

- A) JL3.0 GC/ transradial approach***
- B) EBU3.0 GC / transradial approach***
- C) JL3.5 GC/ transfemoral approach***
- D) Other catheter ...***



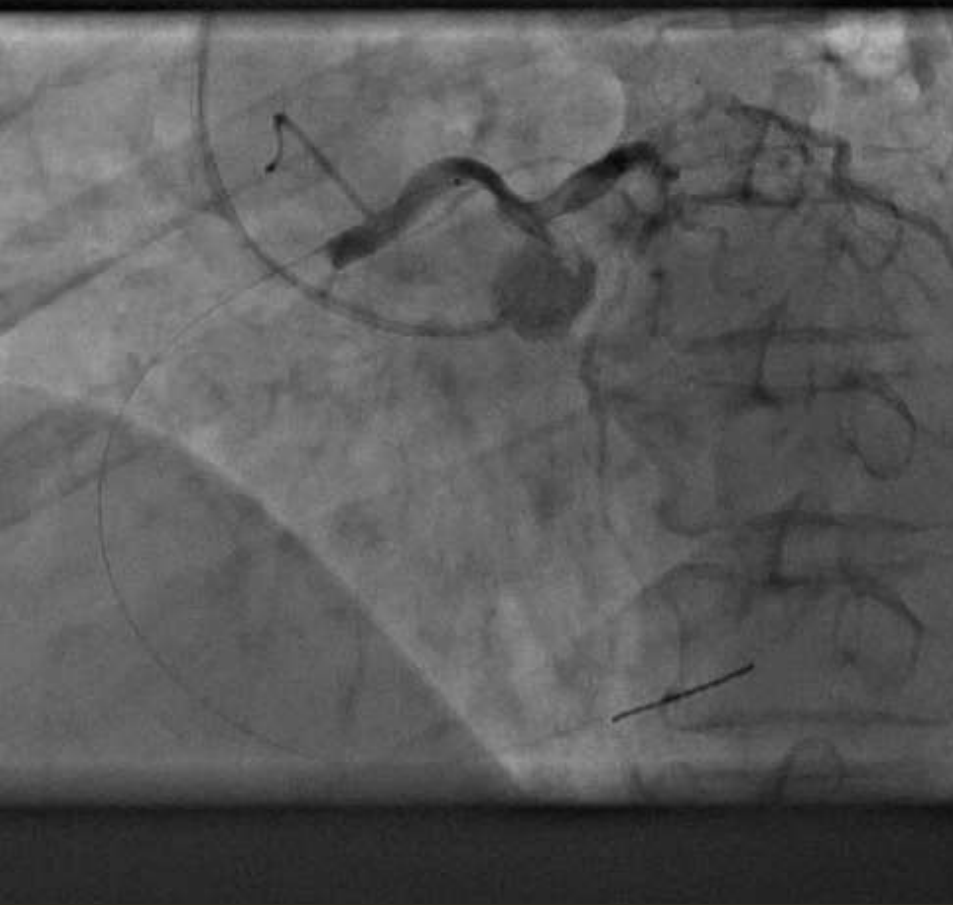
- yes
- no
- maybe

My real case ; only JL3.5 GC was available

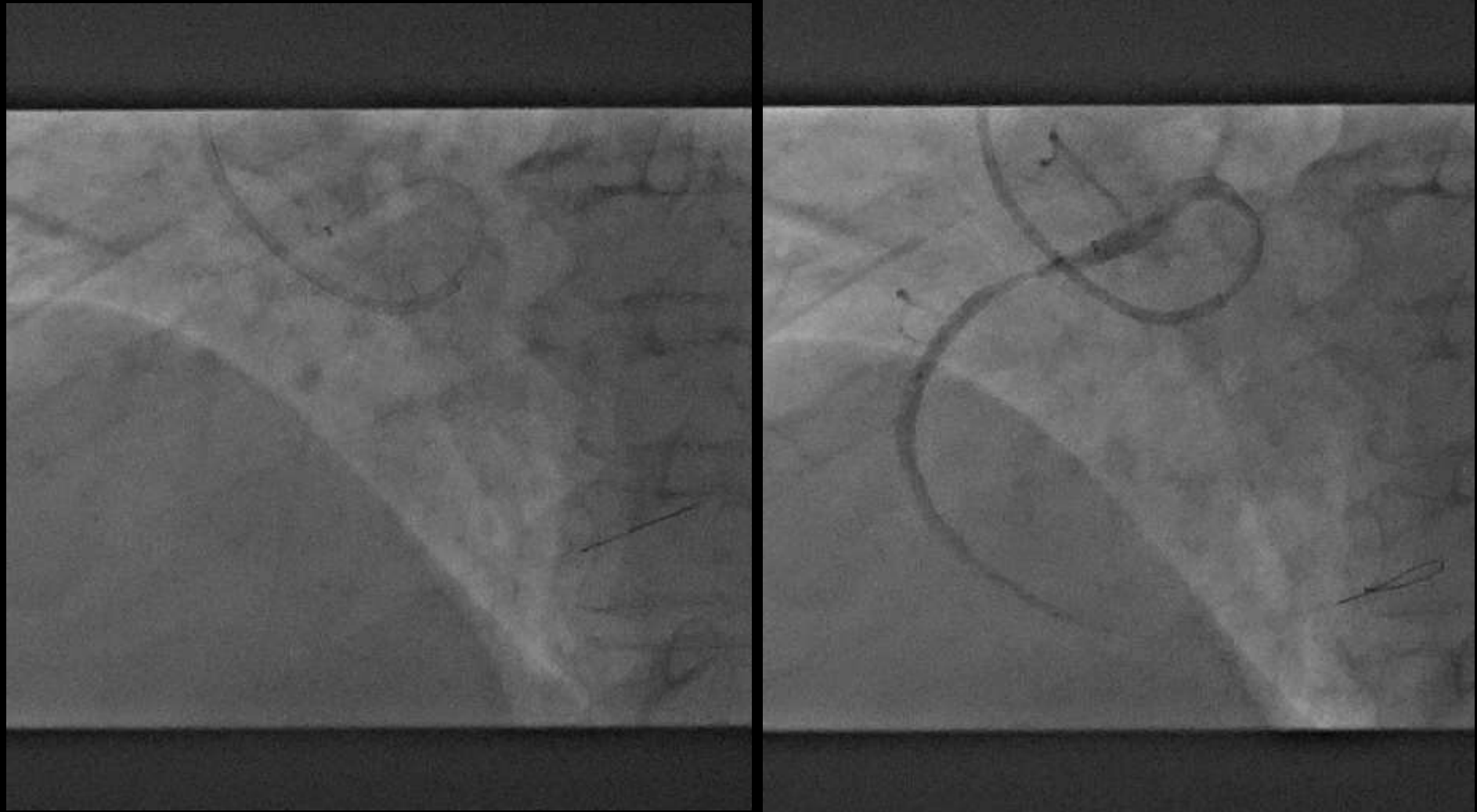


*Placing the guidewire in LAD,
Manipulate the Runthrough NS into RCA*

Injection via Thrombectomy catheter

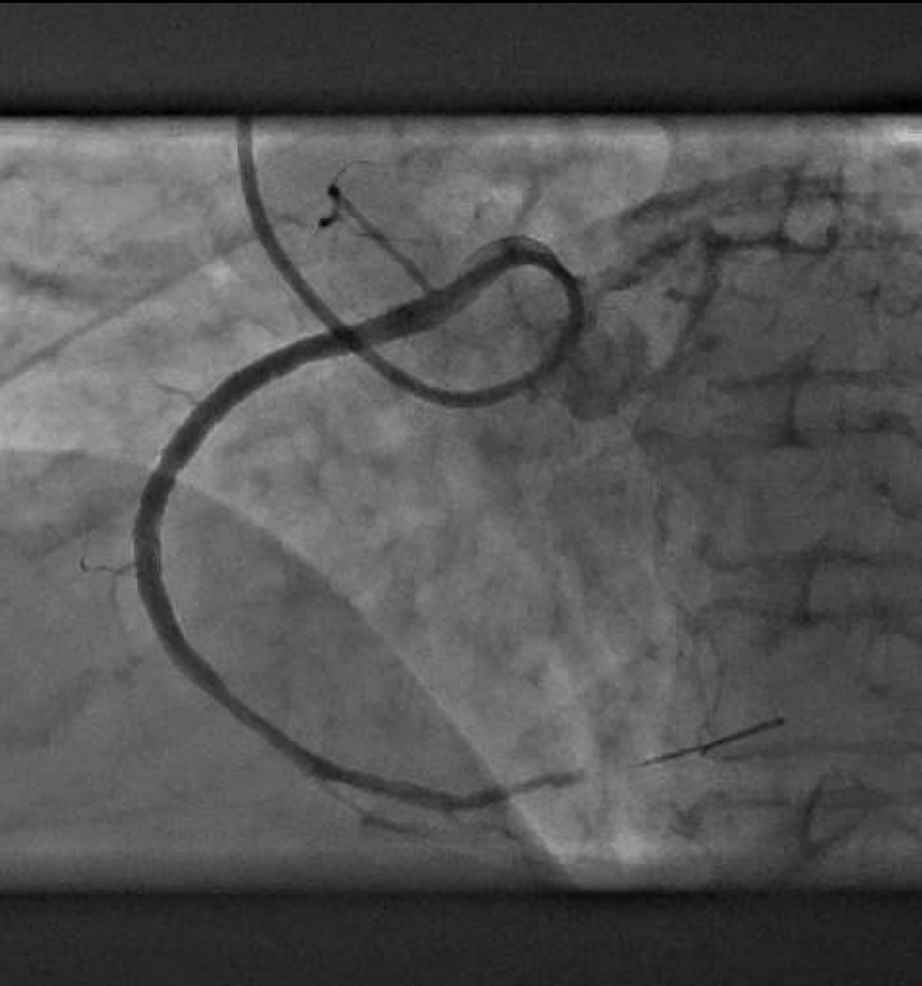


Proceeding PCI by using a 5F extension catheter



3.5/28mm EES via 5F GuideZilla®

Final result



Conclusion

Special device and technique for unexpected situation of anomalous RCA PCI is crucial point for time-constrained STEMI PCI

Extension catheter (e.g. GuideZilla) is very useful when the ideal catheter is not available

