

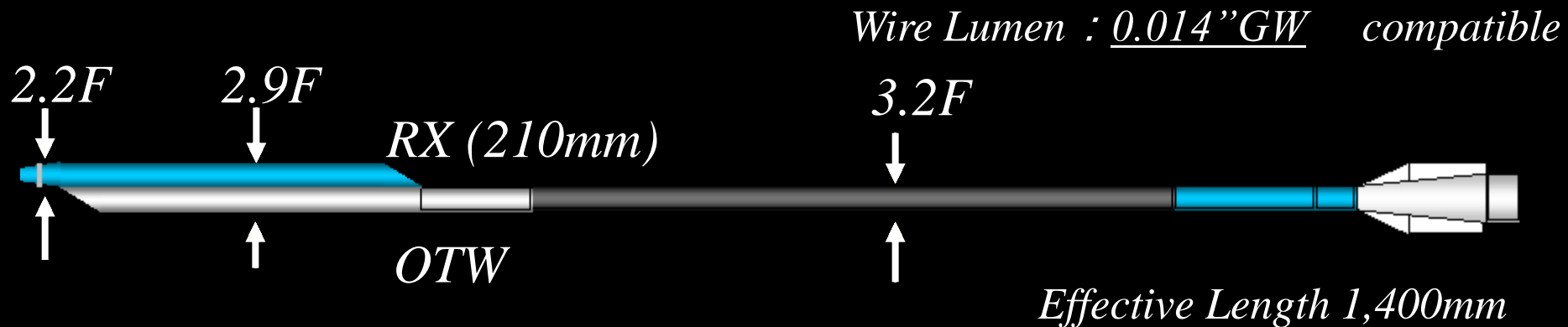
Crusade in CTO PCI



Kasai Shoikai Hospital
Yasushi Asakura M.D.



Product Configuration

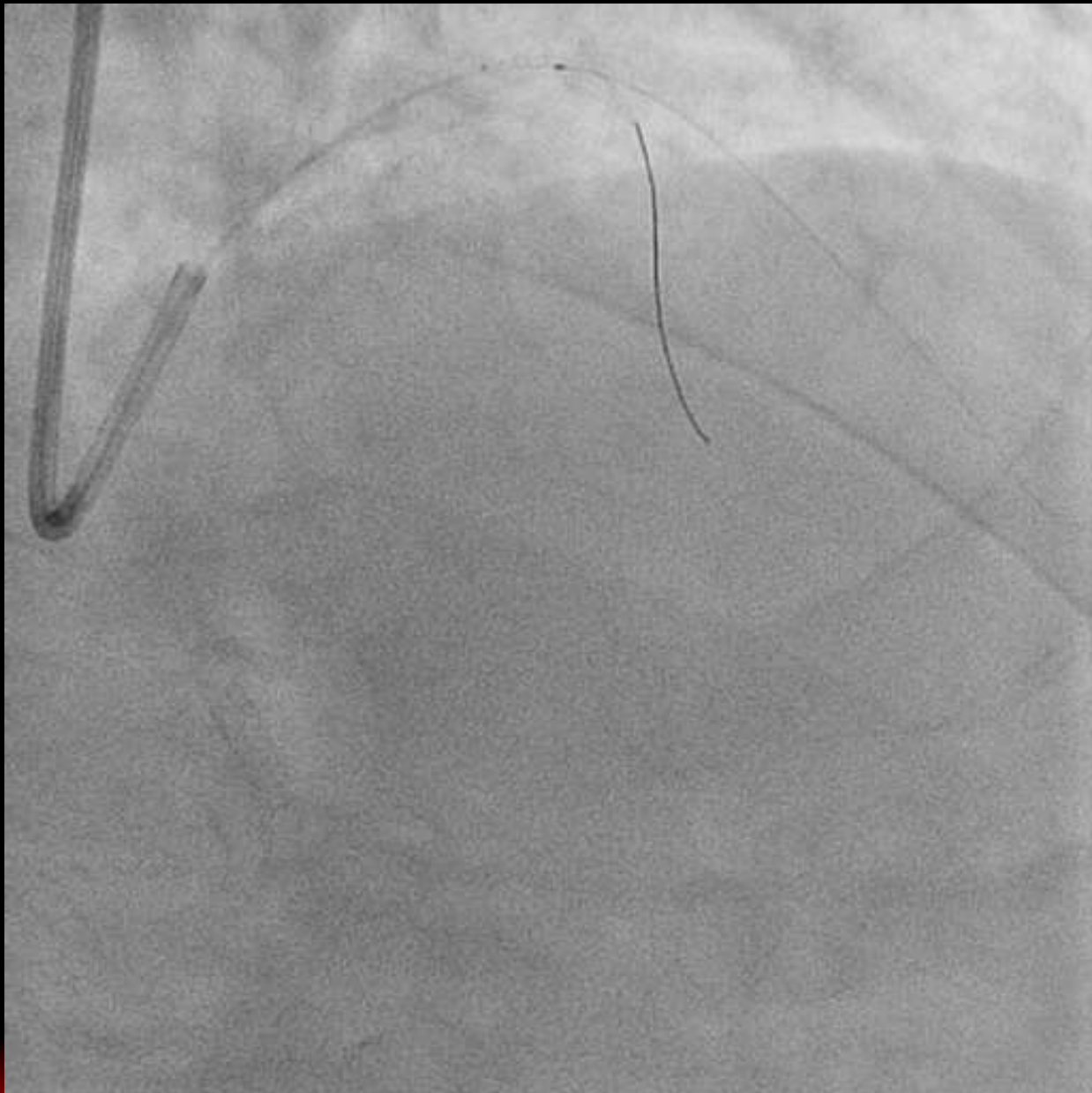


Enhanced Performance of Crusade

1. *Excellent Trackability enabled by flex and minimized distal shaft profile.*
2. *Good proximal shaft support (stylet is not required)*
3. *Excellent GW maneuverability enabled by two-layered GW lumen configuration.*



Crusade



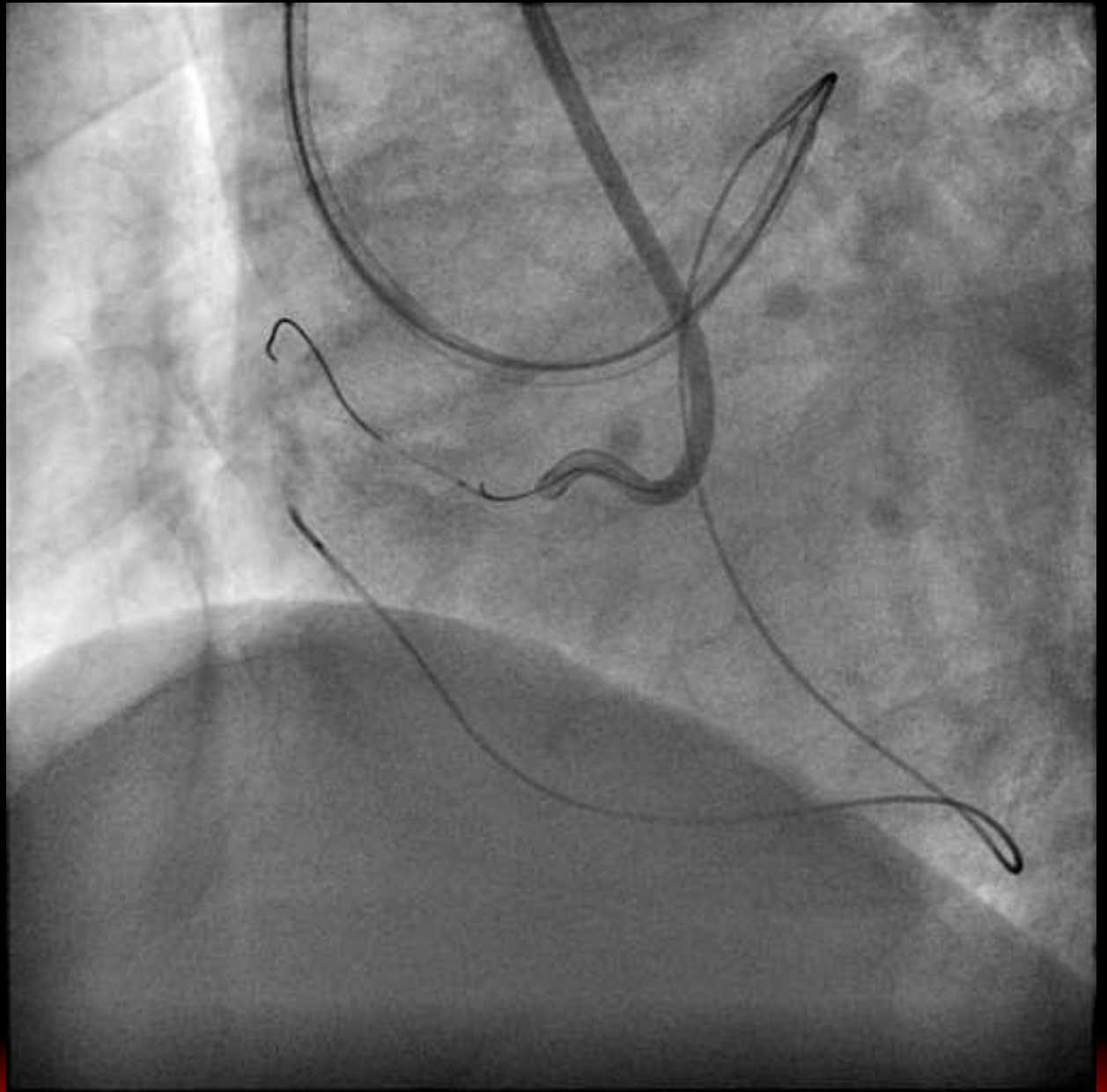


Significance of Using Crusade

- ✓ **Enable Crossing of GW into Complex Side Branch**

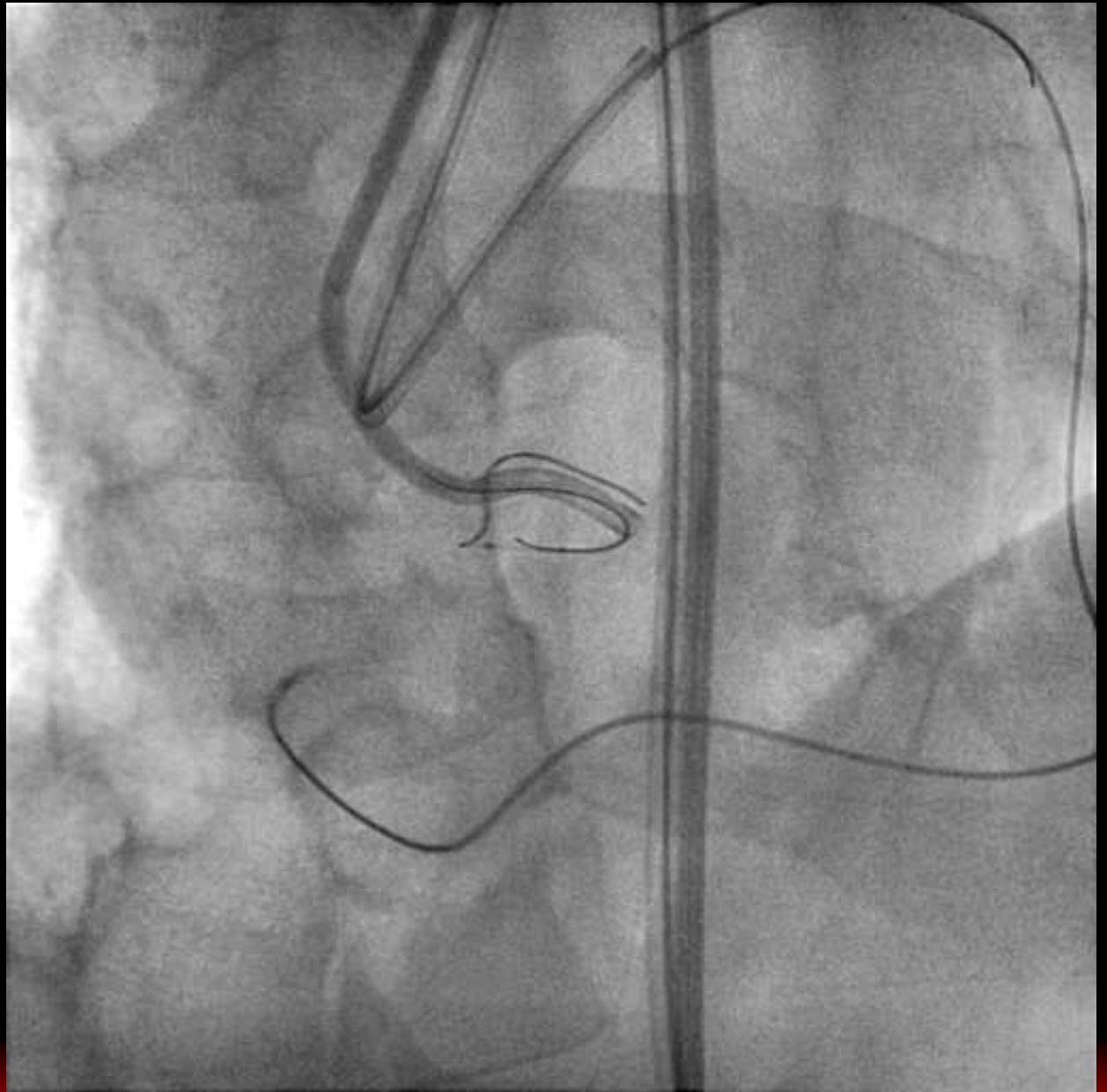


Case



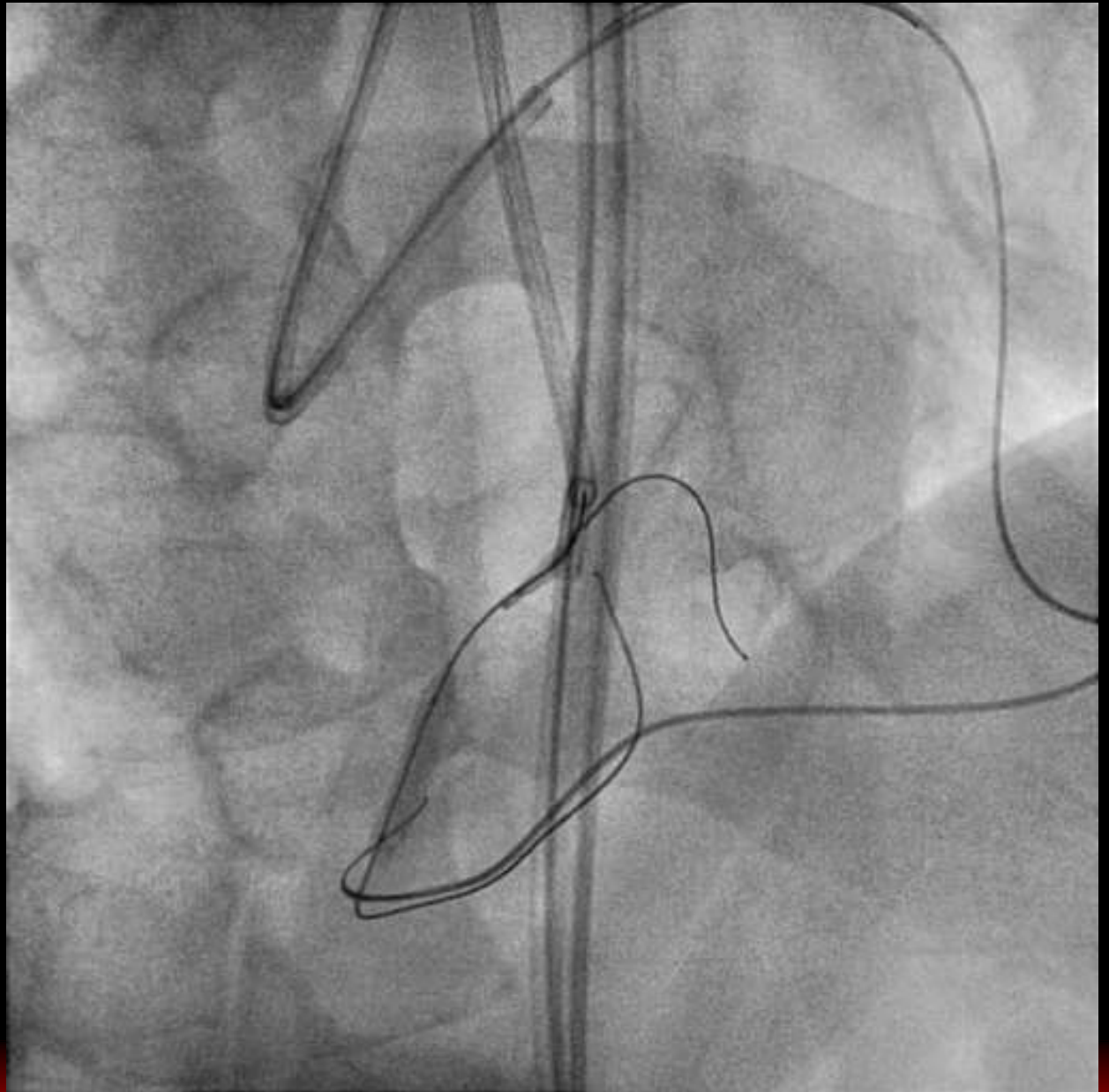


Crusade



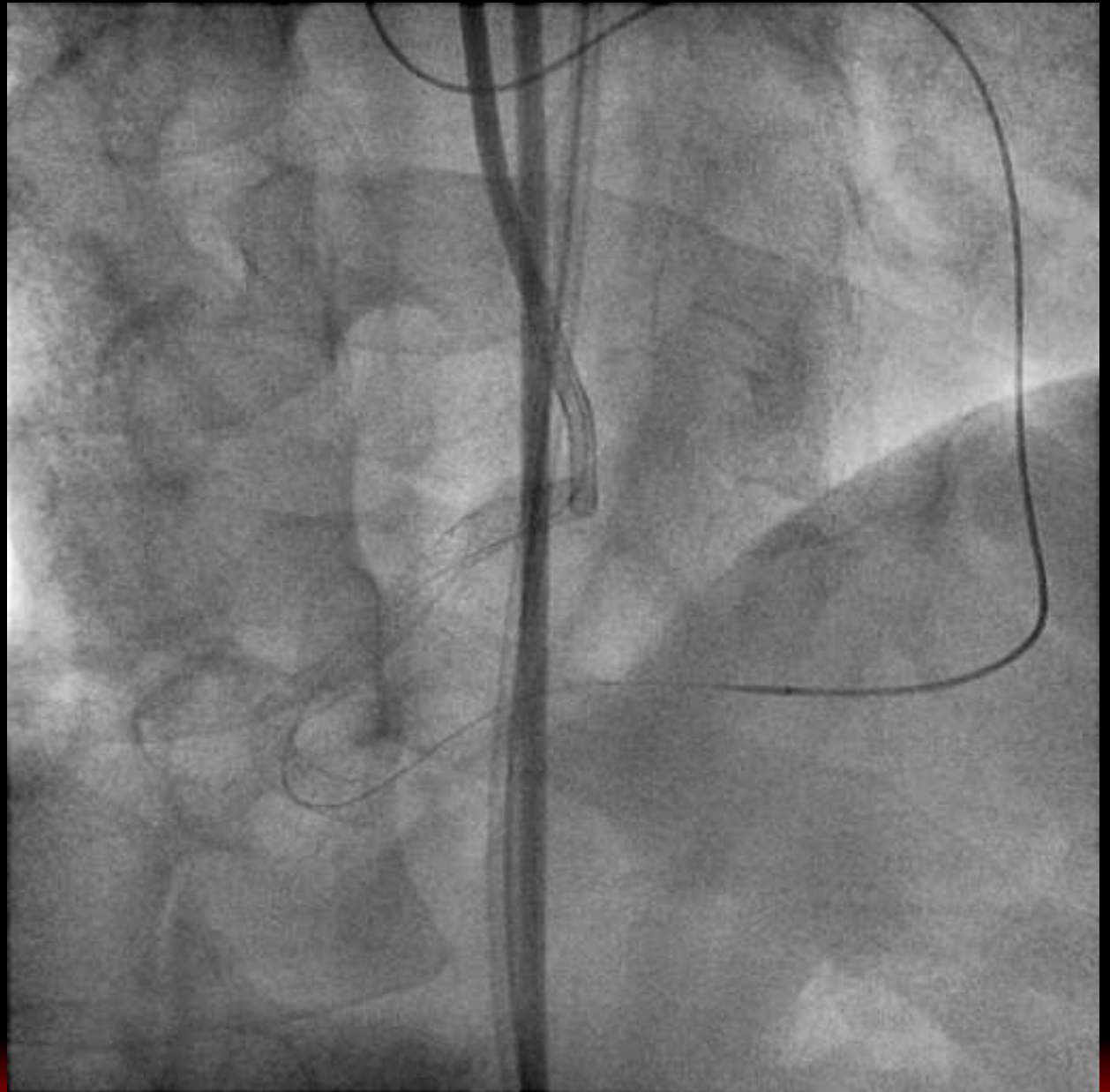


Reverse CART





Final



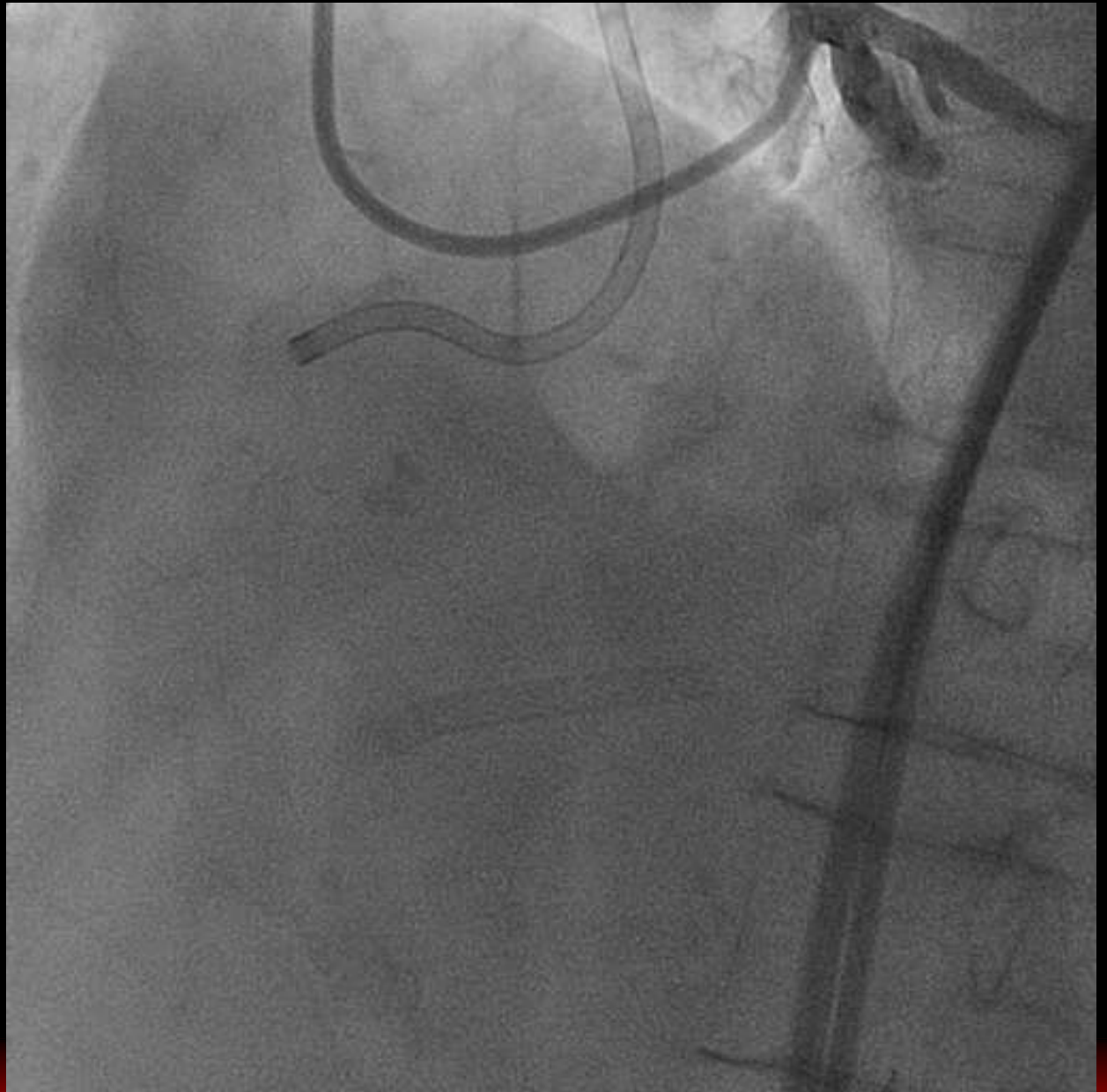


Significance of Using Crusade

- ✓ **Enable Crossing of GW into Complex Side Branch**
- ✓ **Back-up Force**

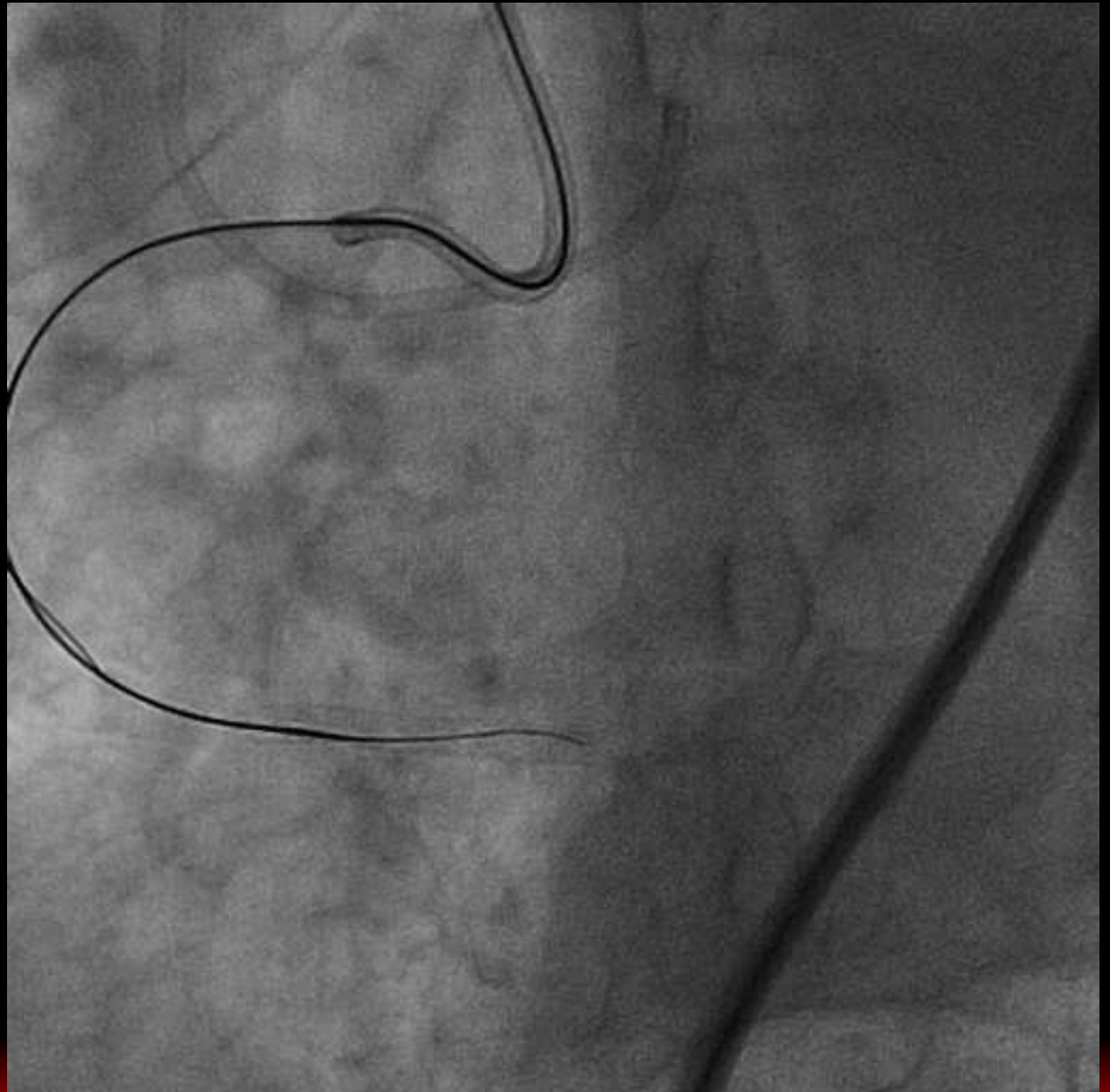


Case





Antegrade Wiring



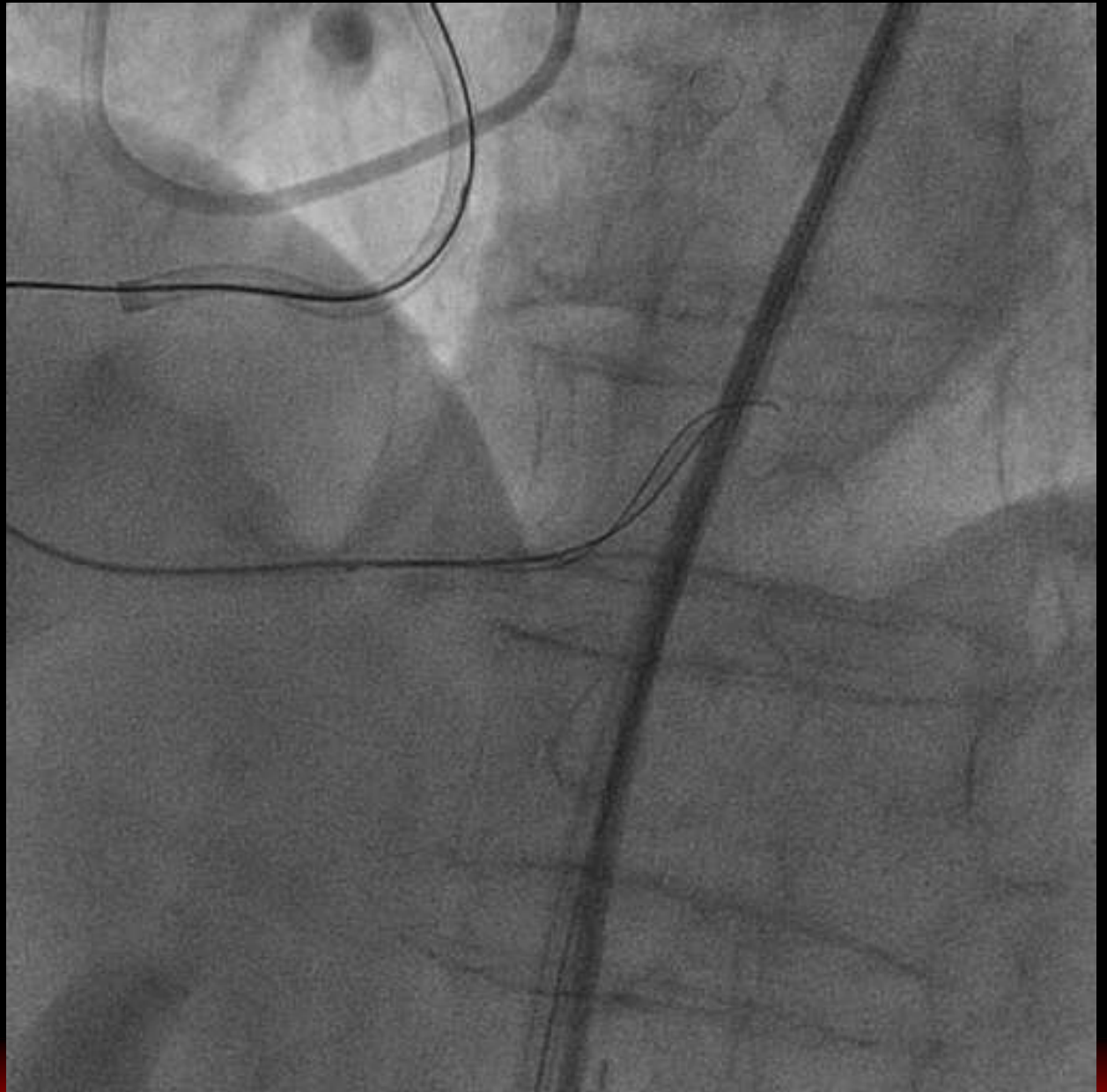


GW



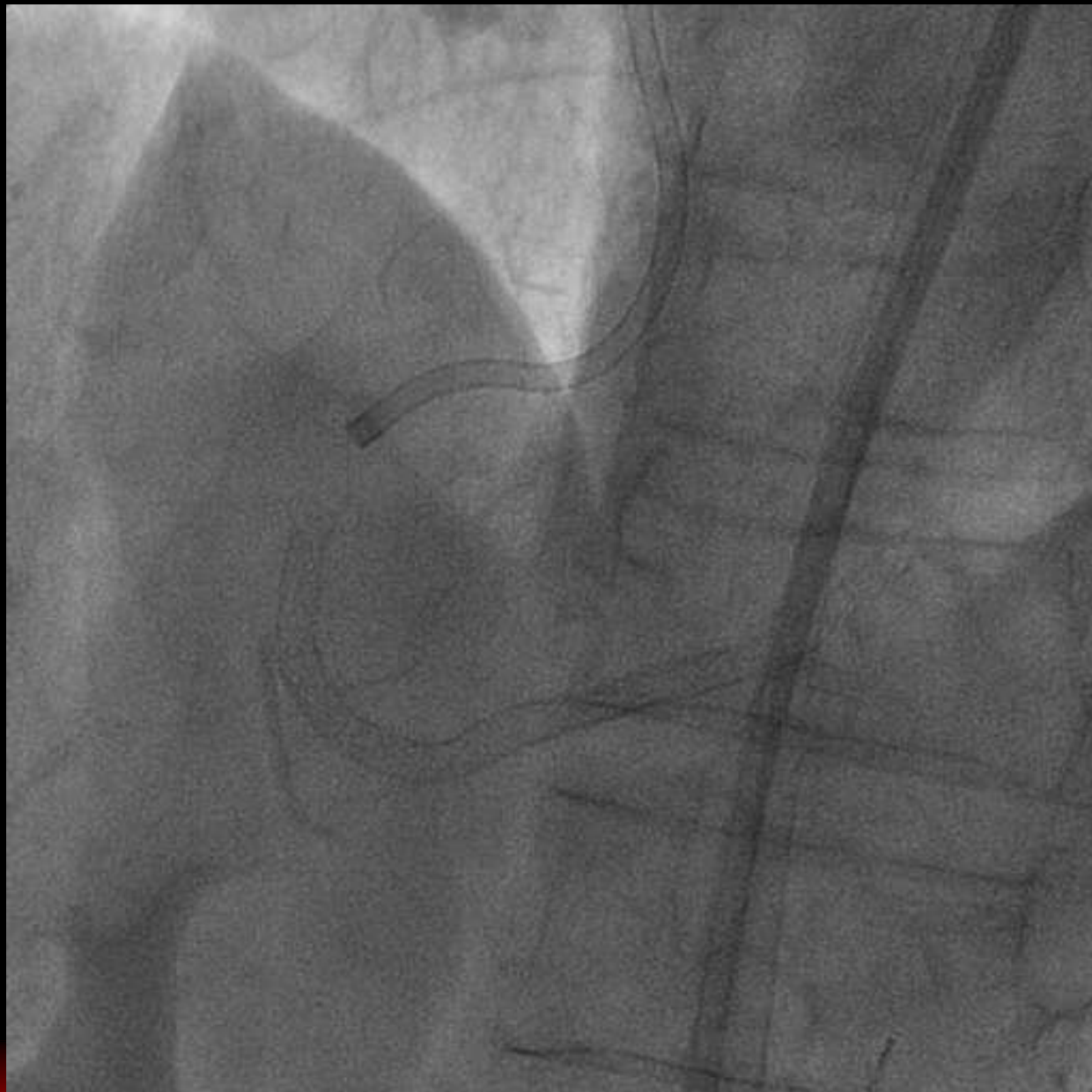


Parallel Wire Technique





Final



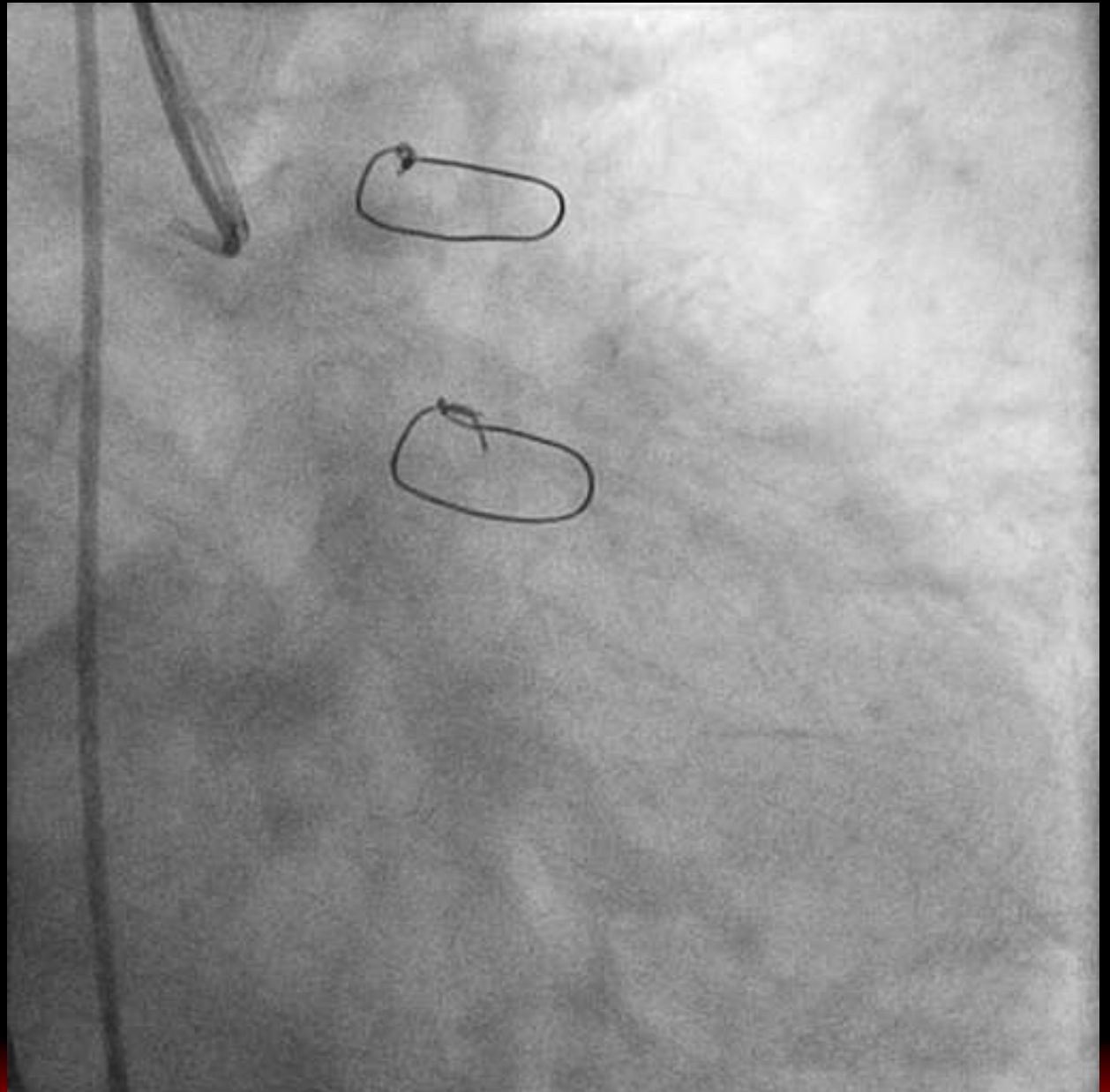


Significance of Using Crusade

- ✓ **Enable Crossing of GW into Complex Side Branch**
- ✓ **Back-up Force**
- ✓ **Parallel Wire Technique**

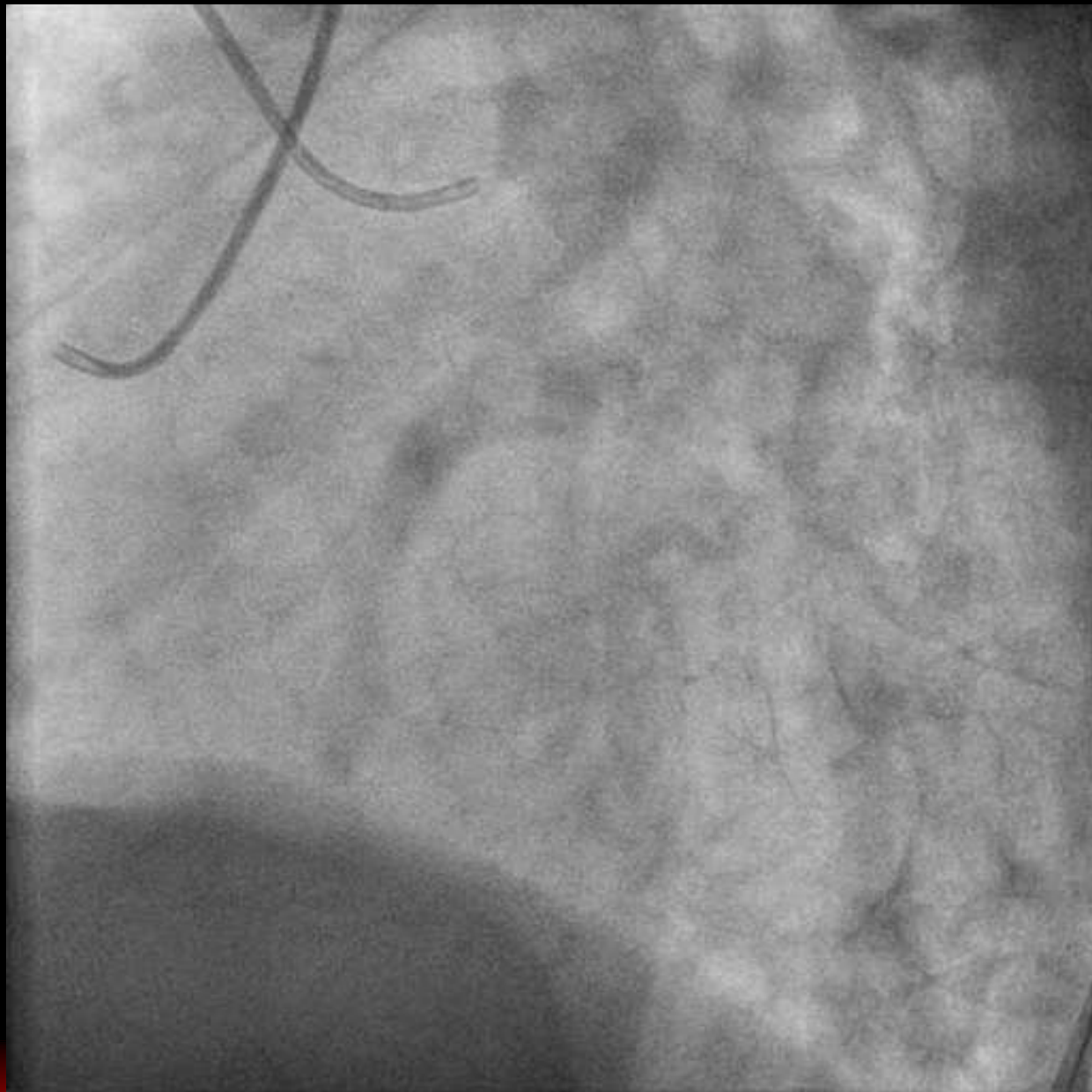


Case



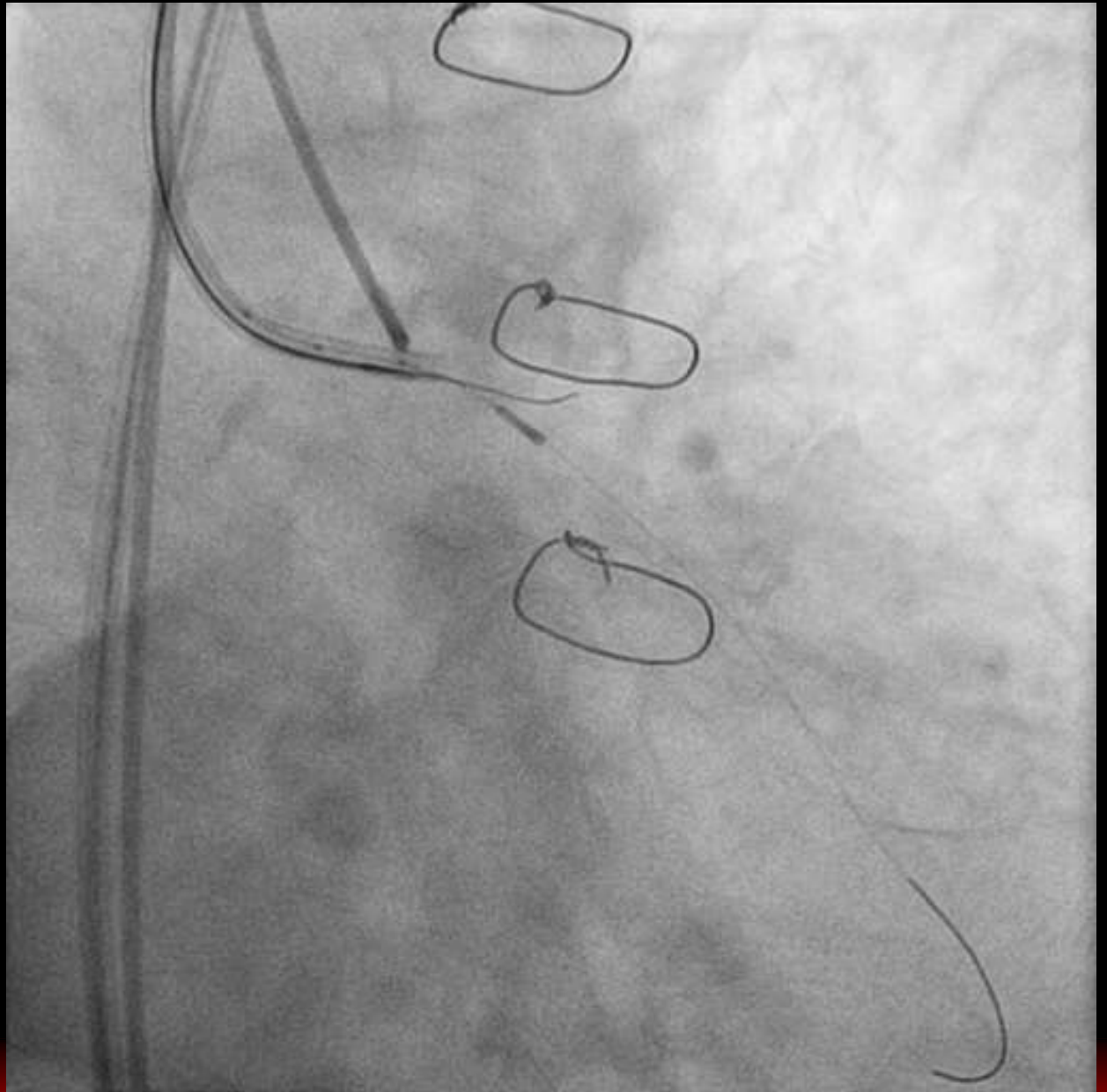


Case



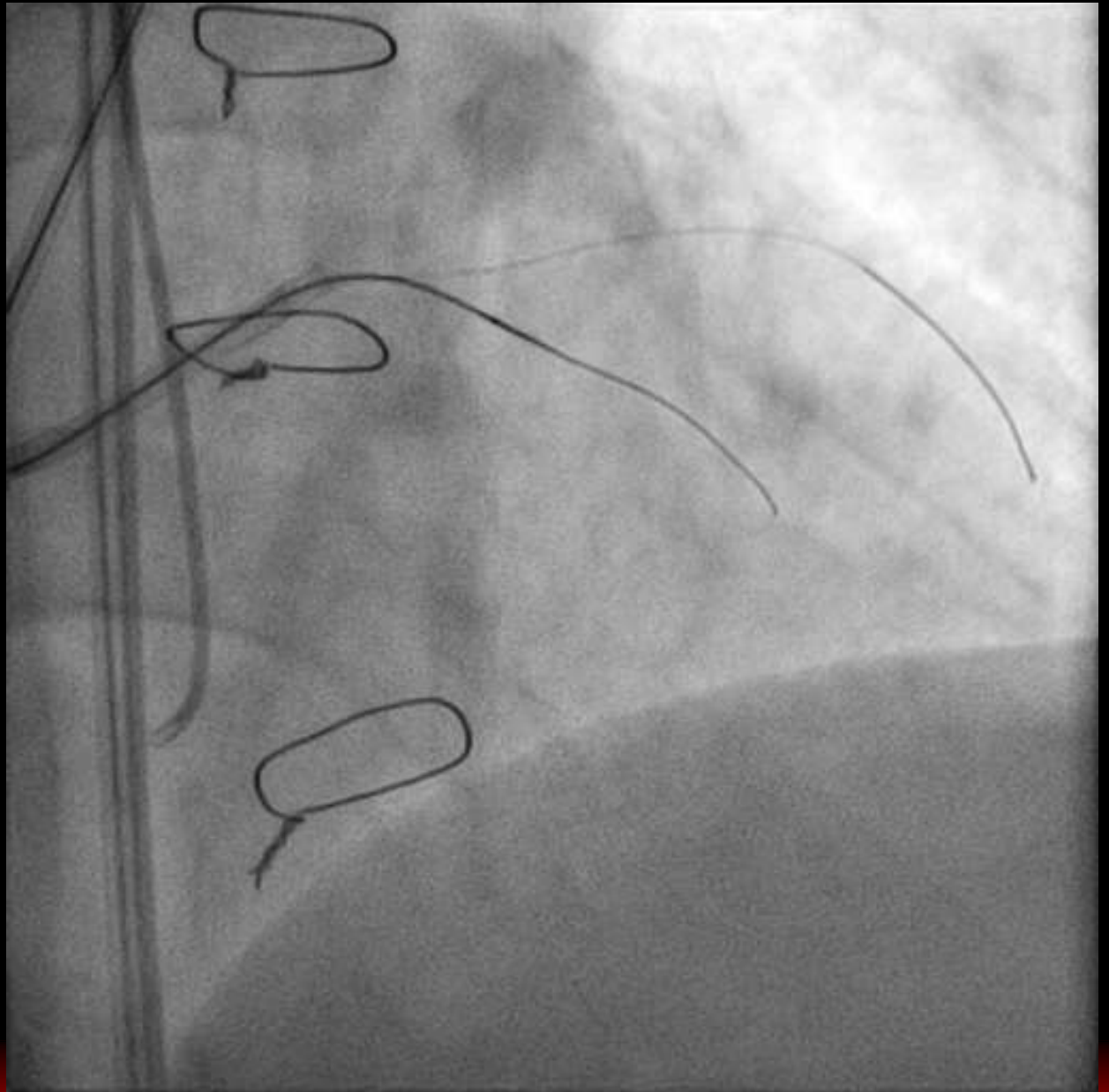


Antegrade Wiring



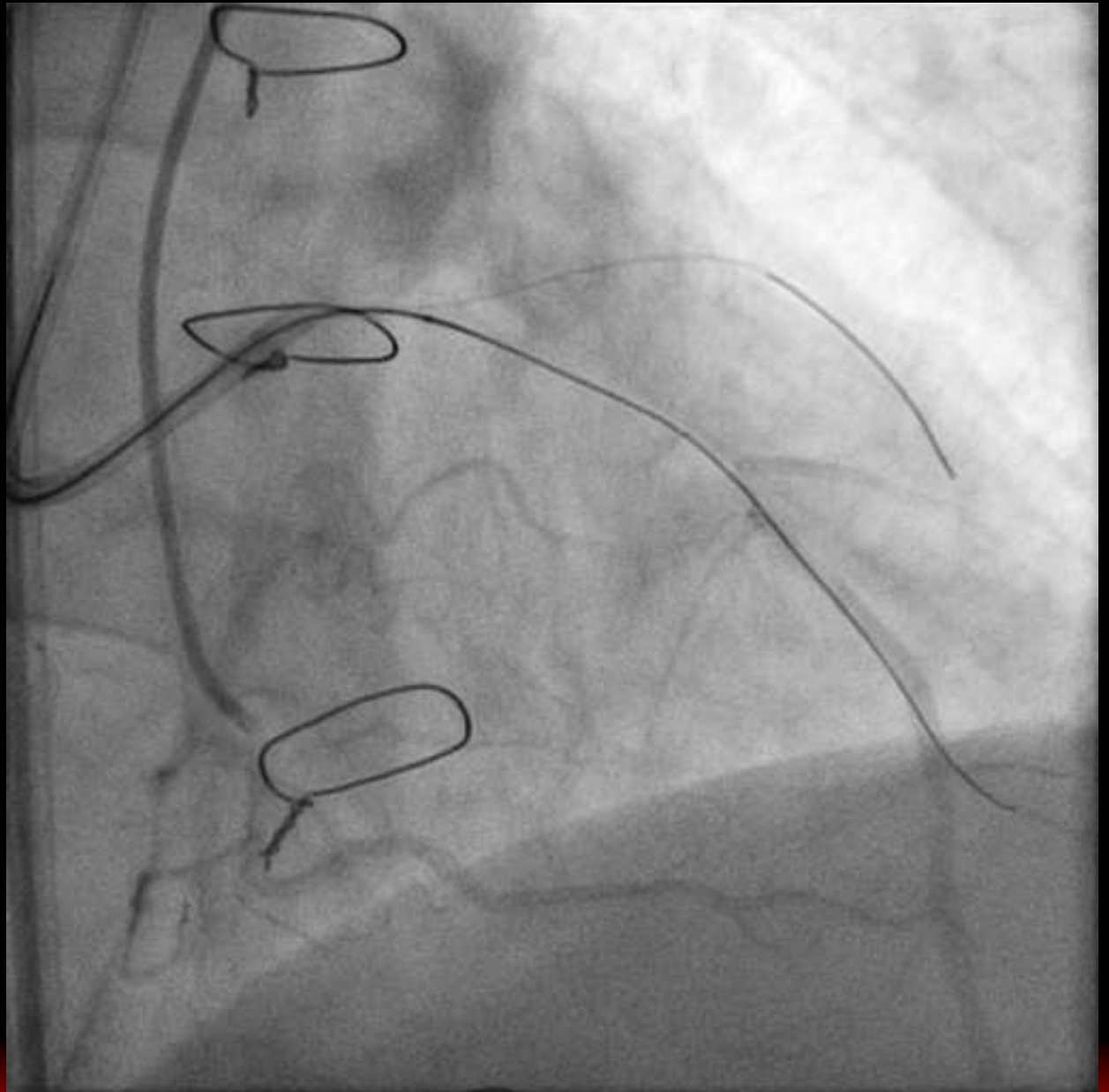


Antegrade Wiring



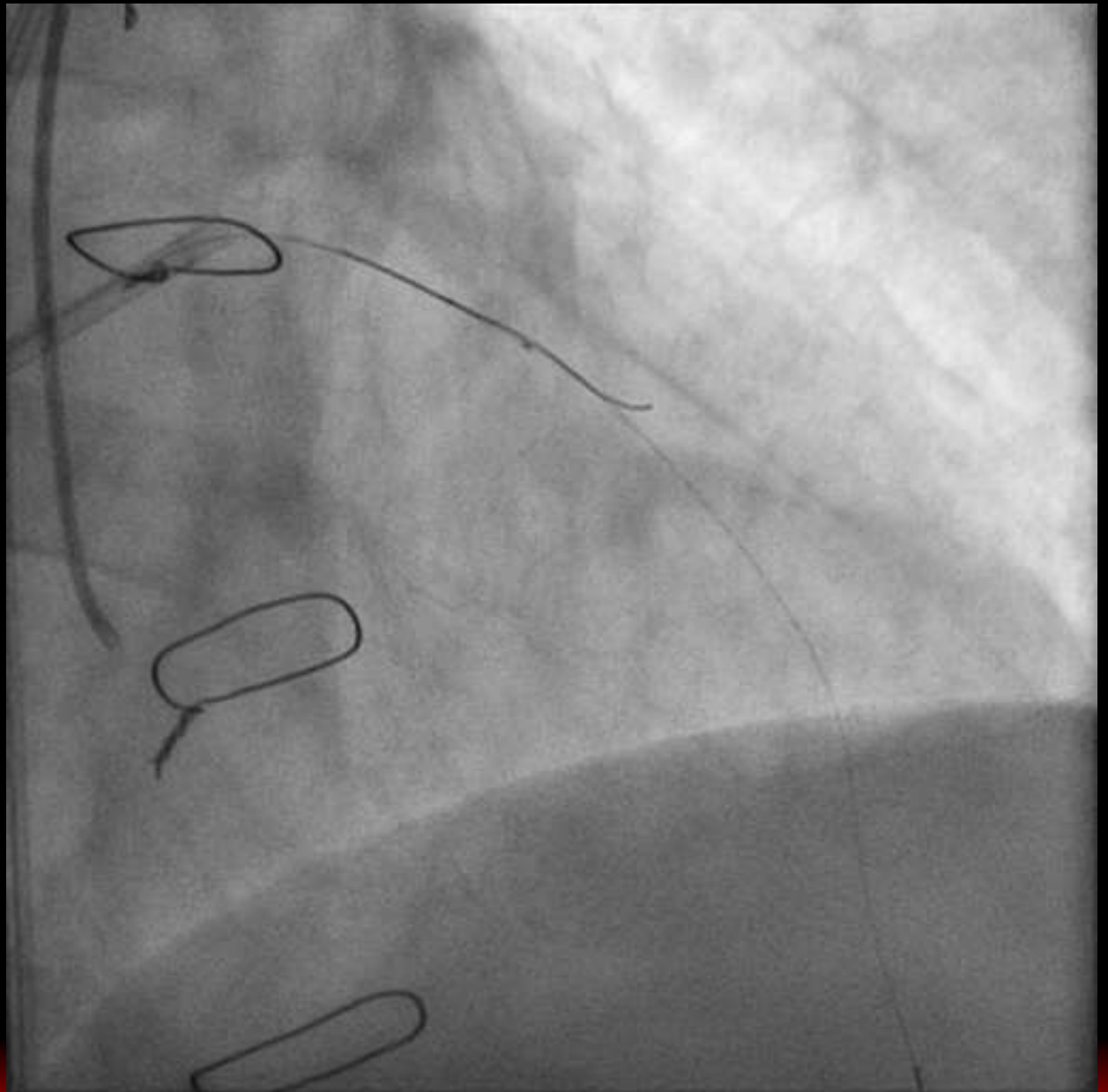


Antegrade Wiring



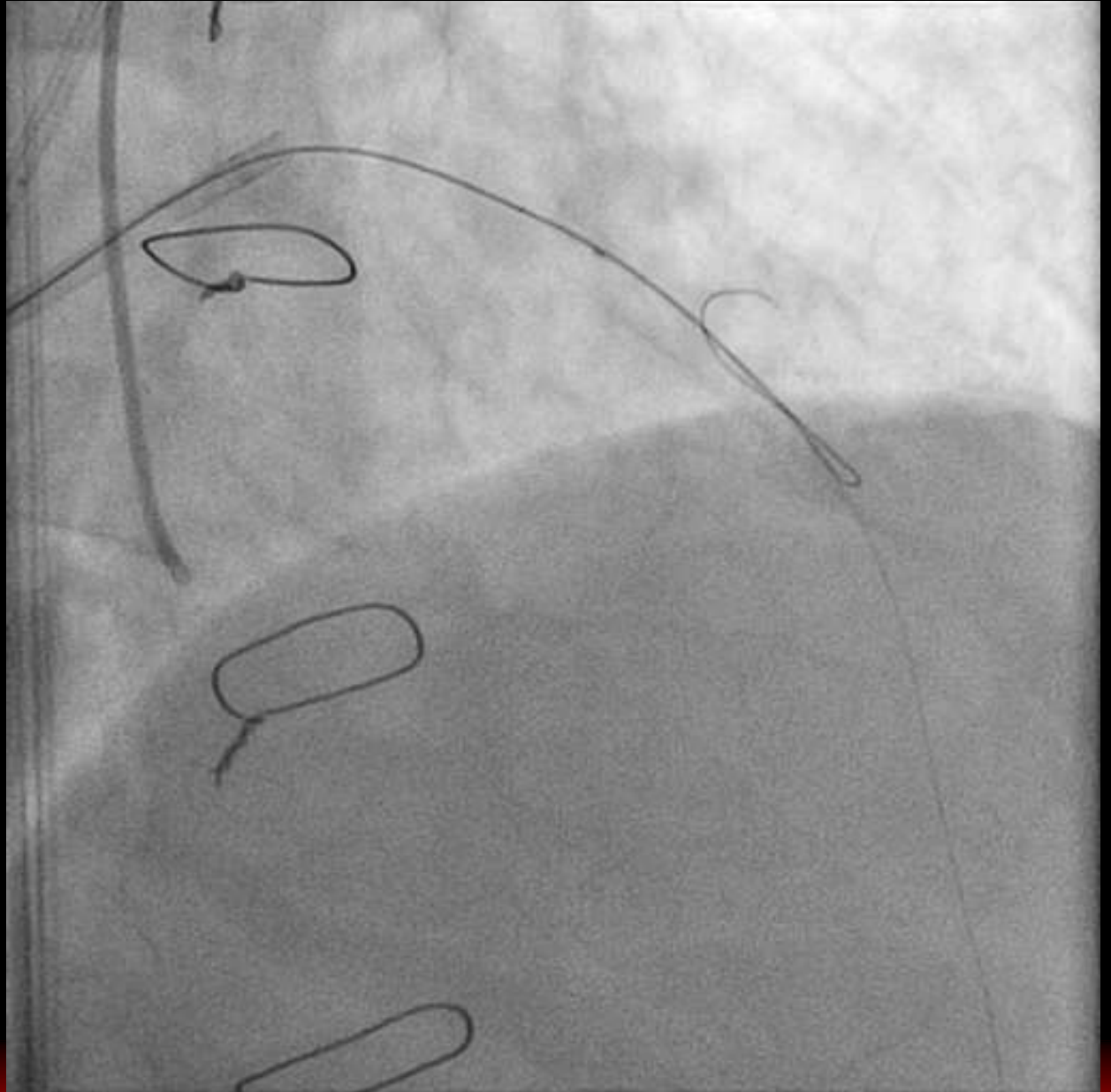


Diagonal

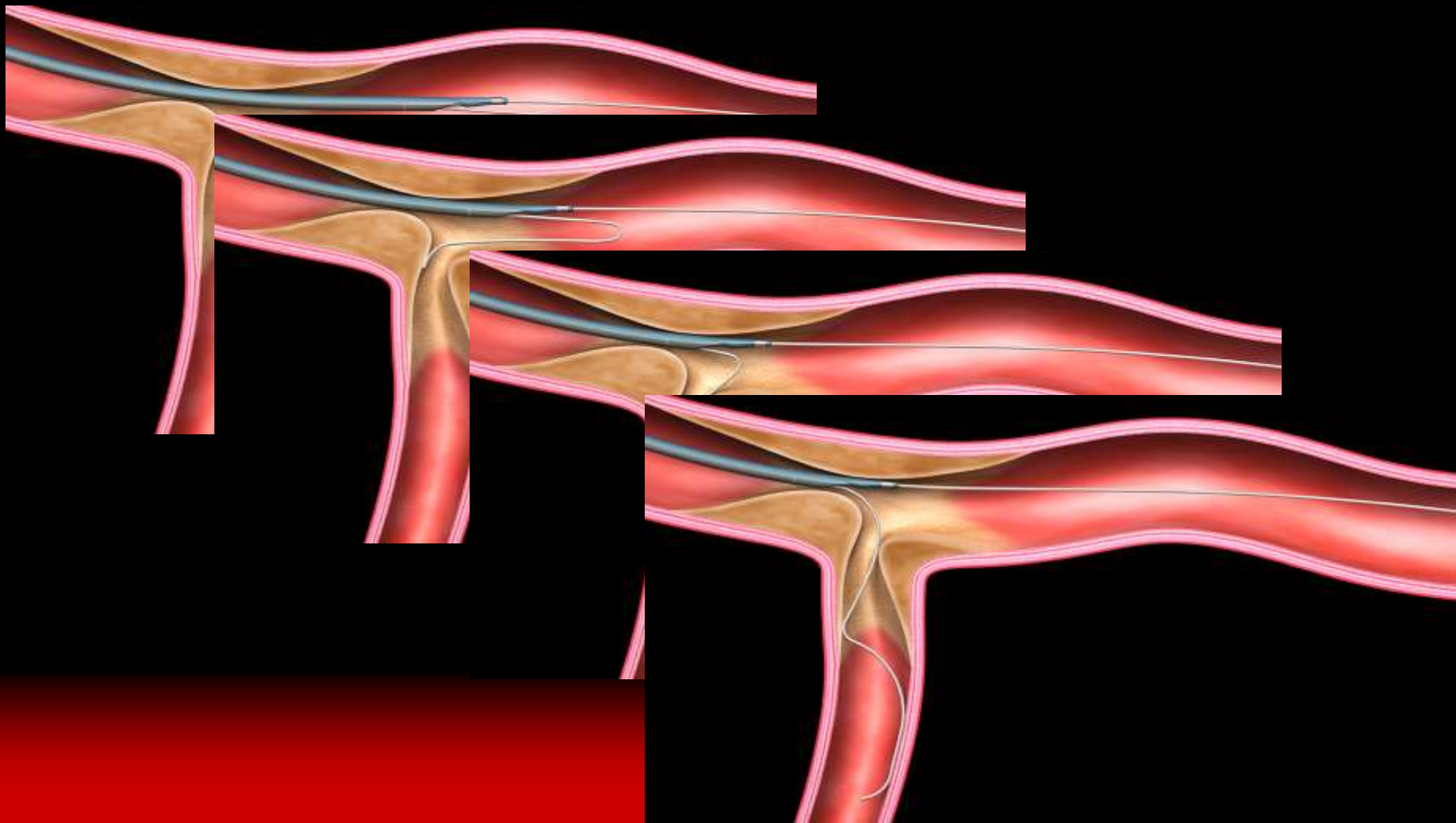




Reverse Wire Technique

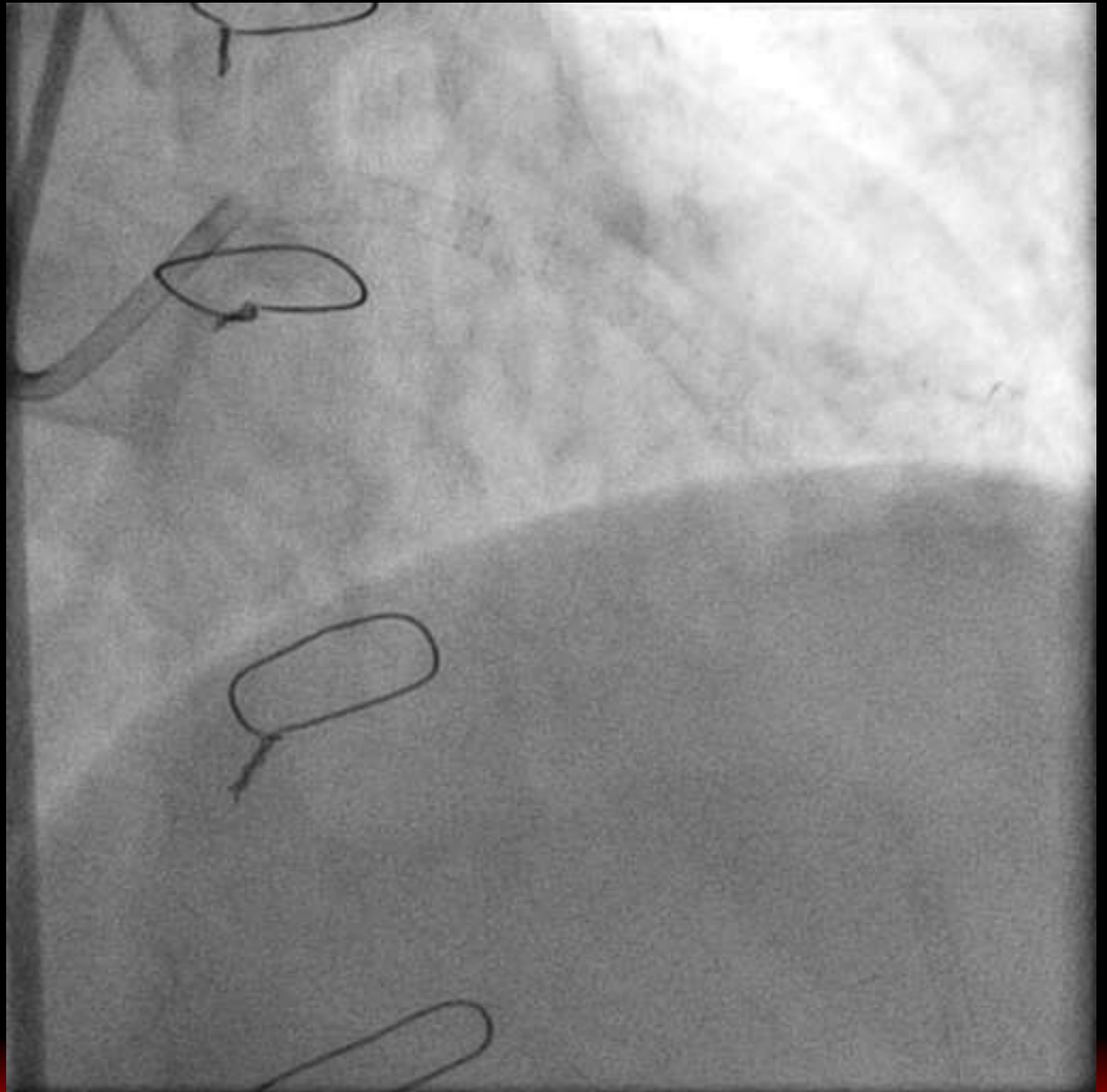


“Reverse GuideWire Technique”





Final



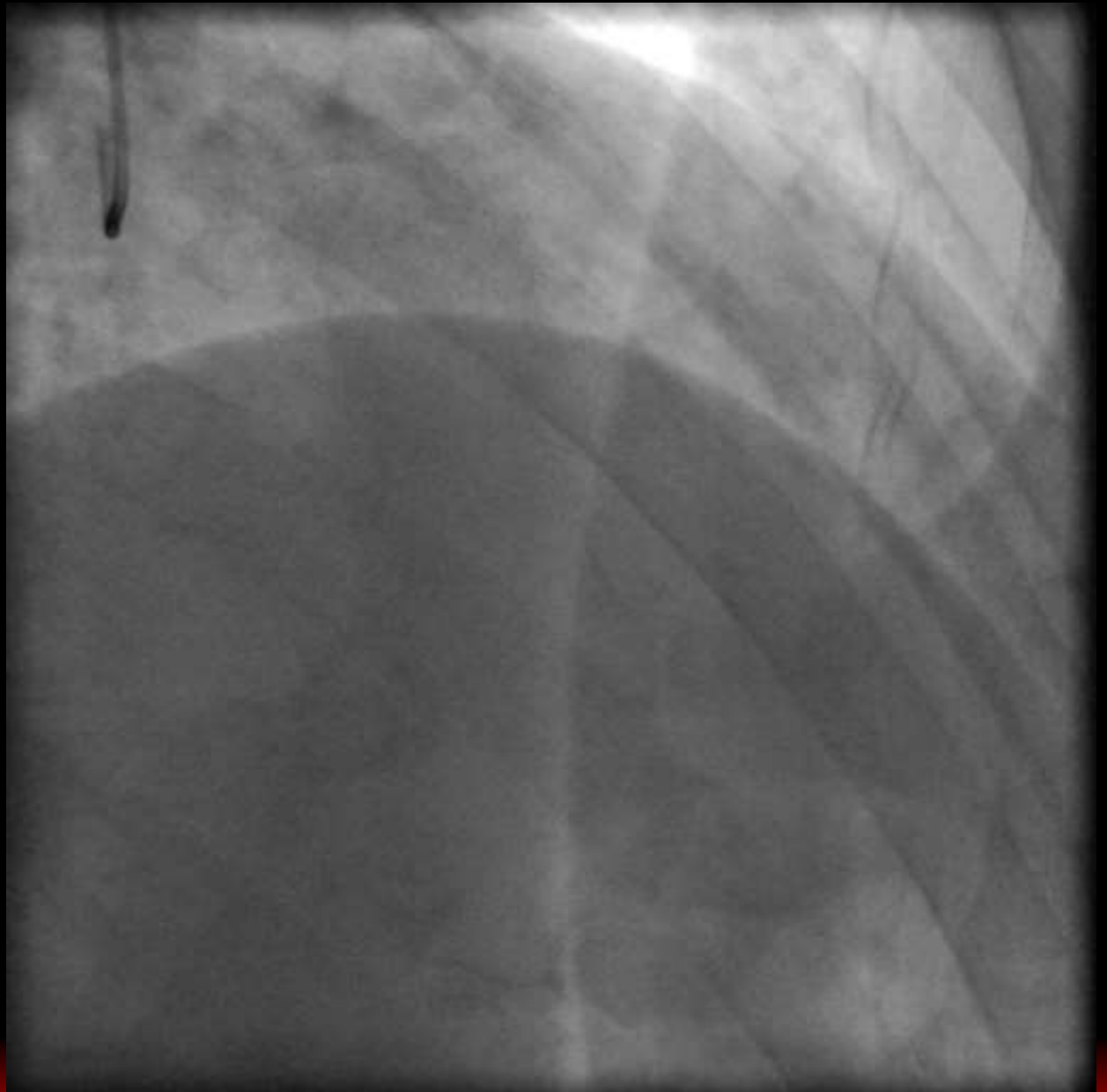


Significance of Using Crusade

- ✓ **Enable Crossing of GW into Complex Side Branch**
- ✓ **Back-up Force**
- ✓ **Parallel Wire Technique**
- ✓ **Reverse Wire Technique**

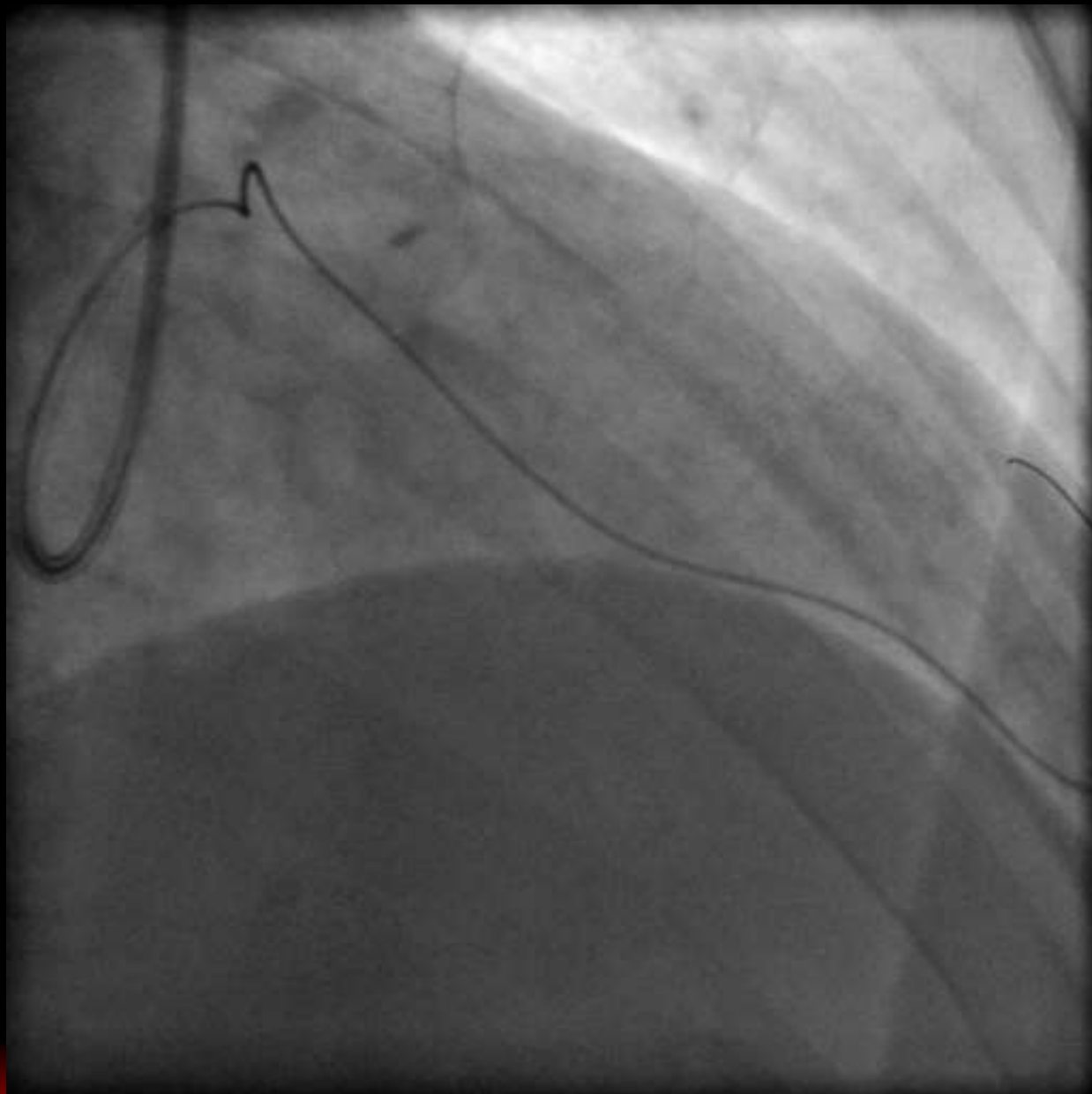


Case



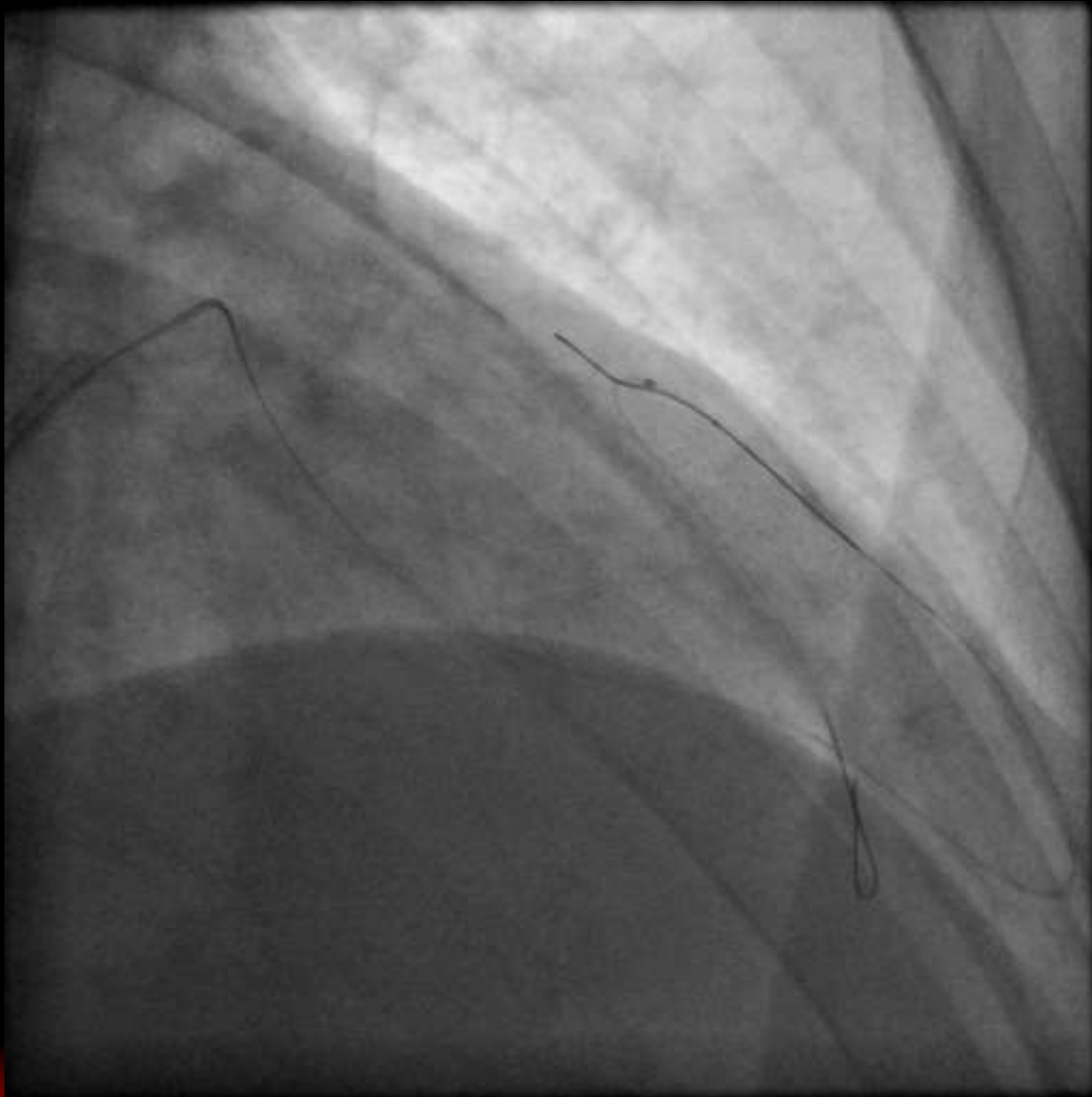


Retrograde Approach



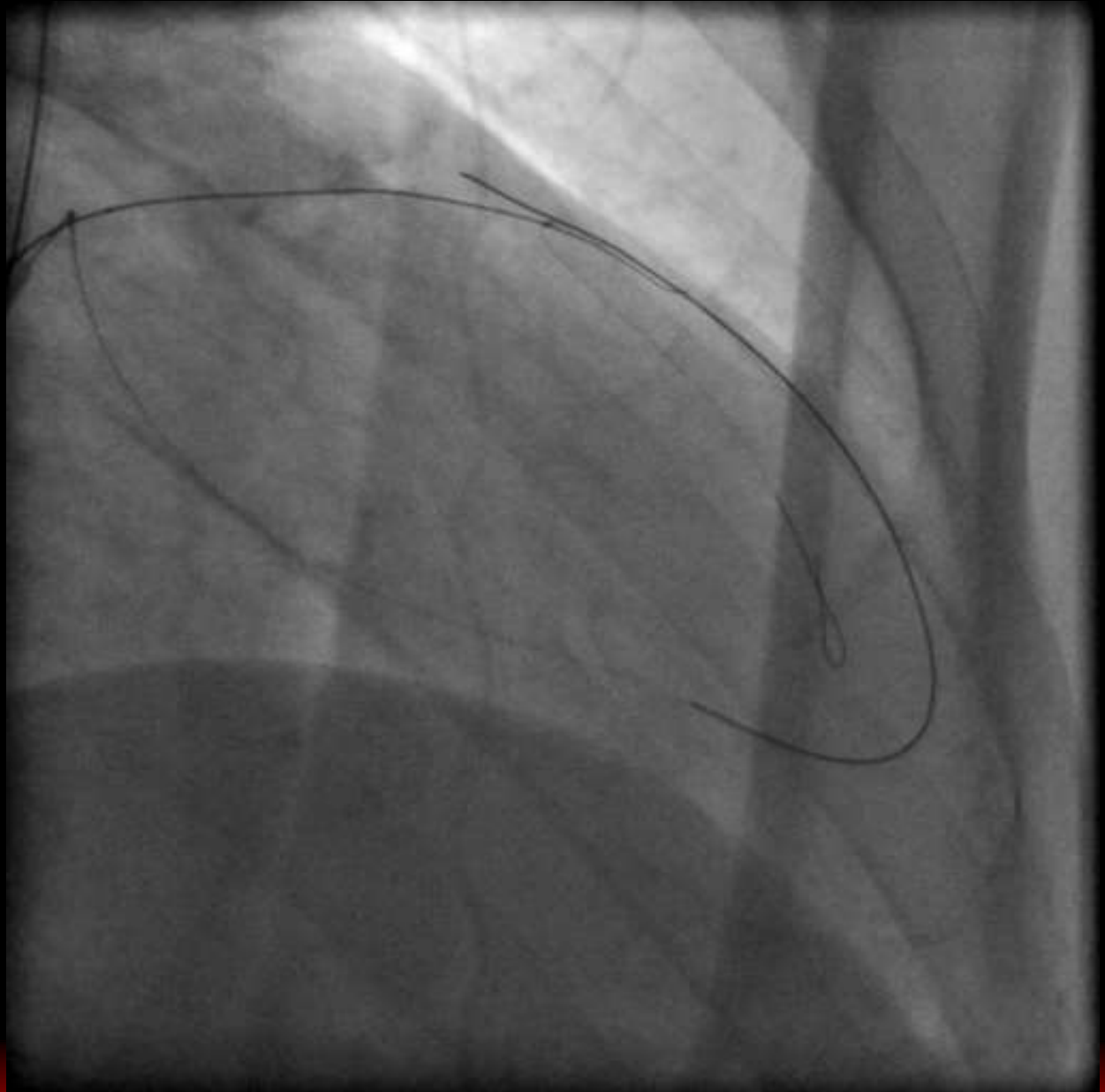


Crusade



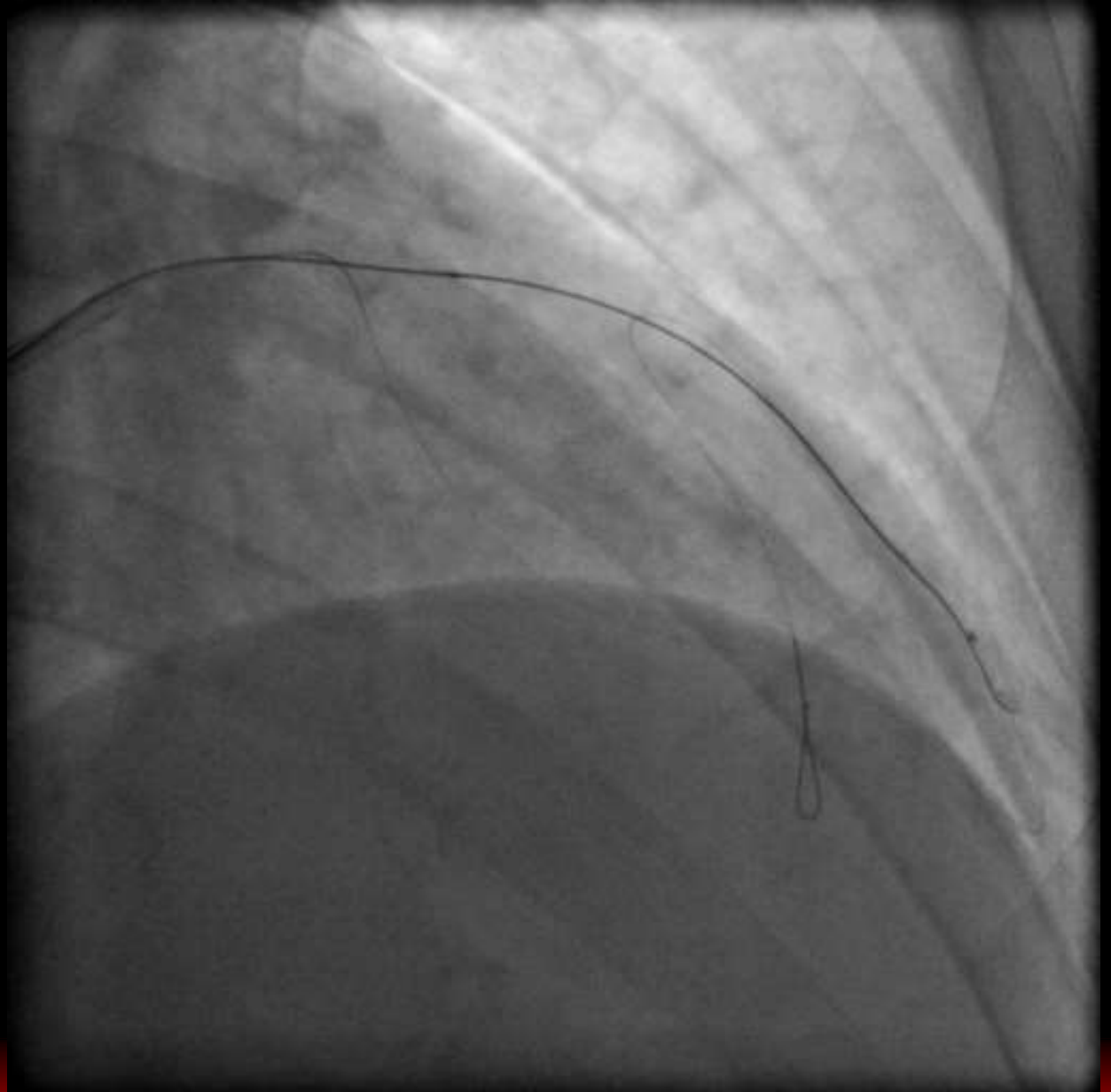


Antegrade Wiring





Contrast Infusion through Crusade



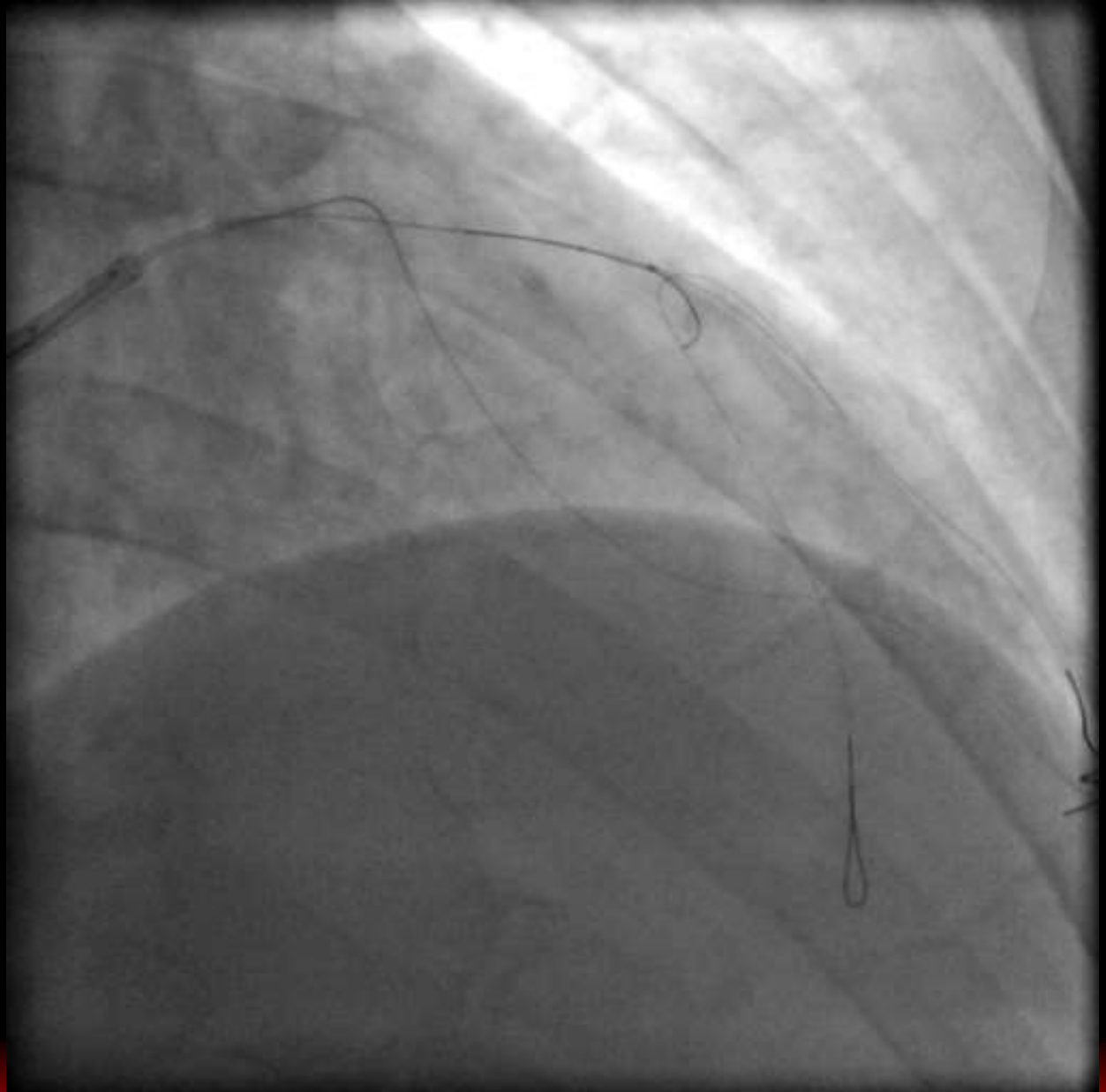


Balloon



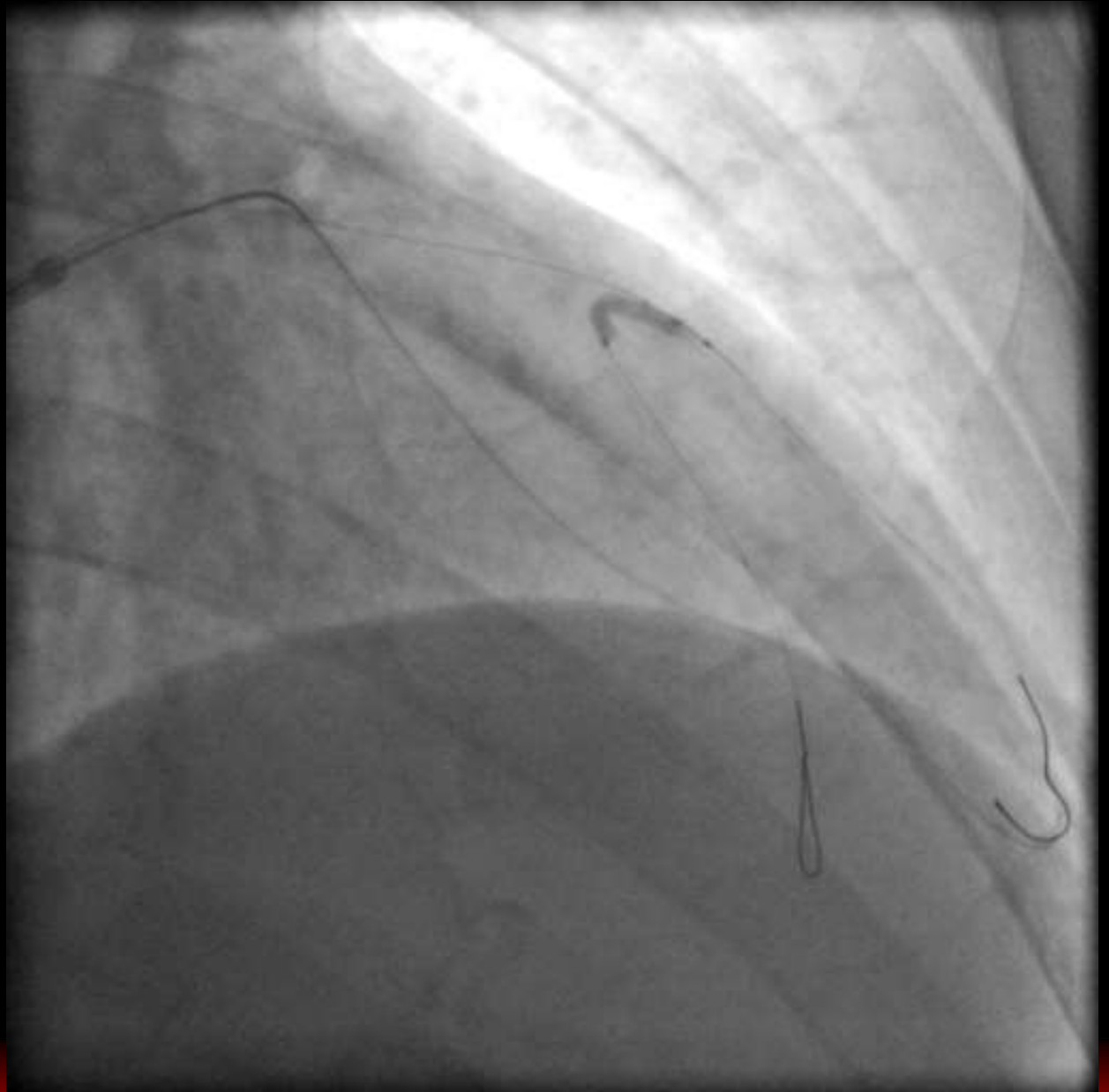


Wiring to LAD





Balloon



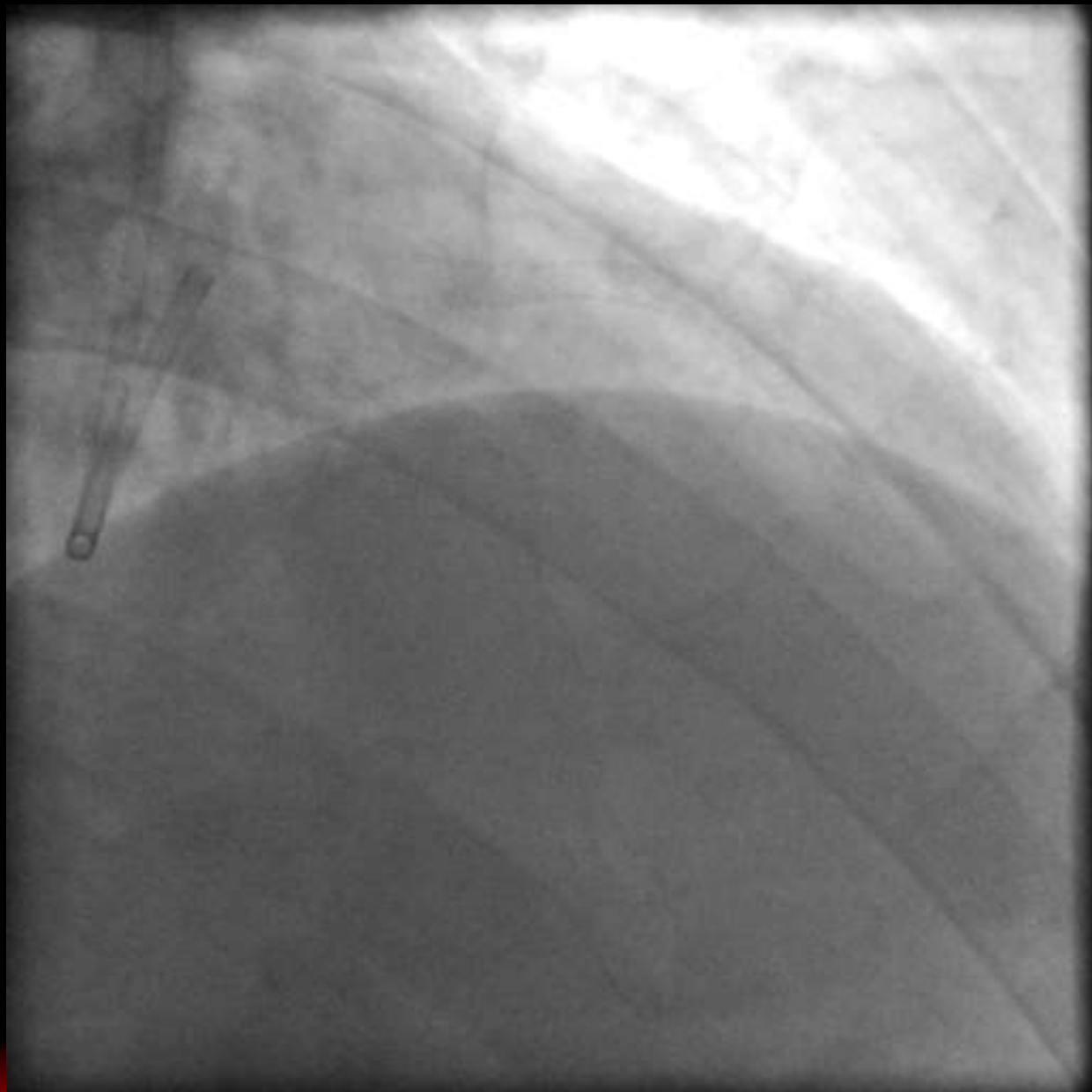


Reverse Wire Technique





Final





Significance of Using Crusade

- ✓ **Enable Crossing of GW into Complex Side Branch**
- ✓ **Back-up Force**
- ✓ **Parallel Wire Technique**
- ✓ **Reverse Wire Technique**
- ✓ **Retrograde Approach**
- ✓ **Infusion of Drug or Contrast Using OTW Lumen**



Summary

- 1. Crusade catheter is very useful in CTO PCI.**
- 2. Parallel wire technique using Crusade is common procedure.**
- 3. Wire manipulation is stabilized, and tip load is increased with Crusade .**
- 4. Reverse wire technique is sometimes very helpful.**