

Durability of Transcatheter Bioprosthetic Aortic Valves

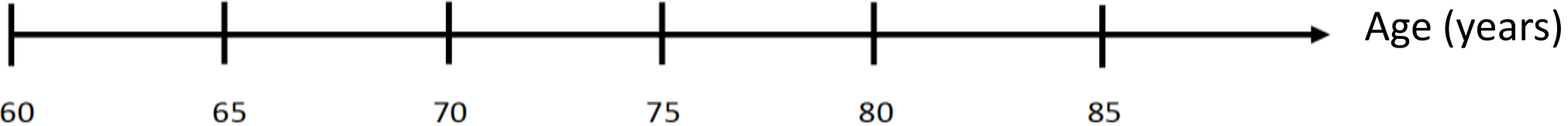
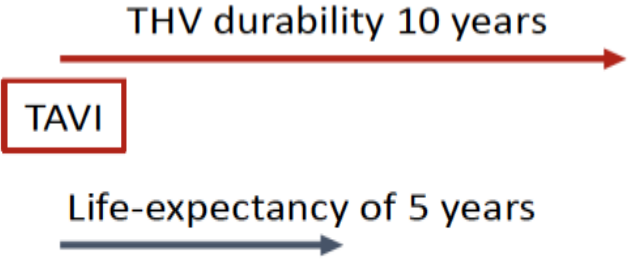
Lars Sondergaard, MD, DMSc, FESC
Professor of Cardiology
Rigshospitalet
Copenhagen, Denmark

Disclosure

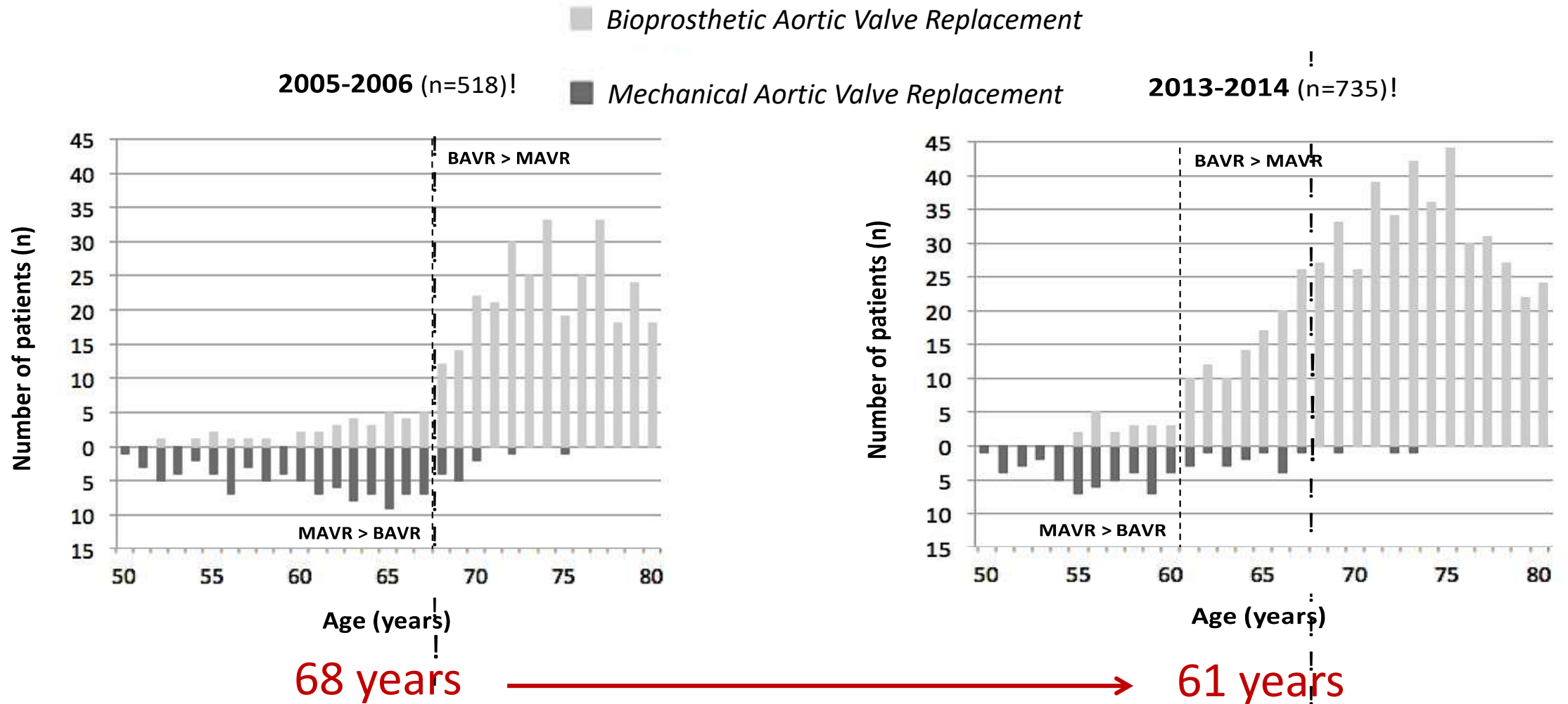
Lars Sondergaard has received consultant fees and/or institutional research grants from

- Abbott
- Boston Scientific
- Medtronic
- SMT

TAVI & patient life-expectancy

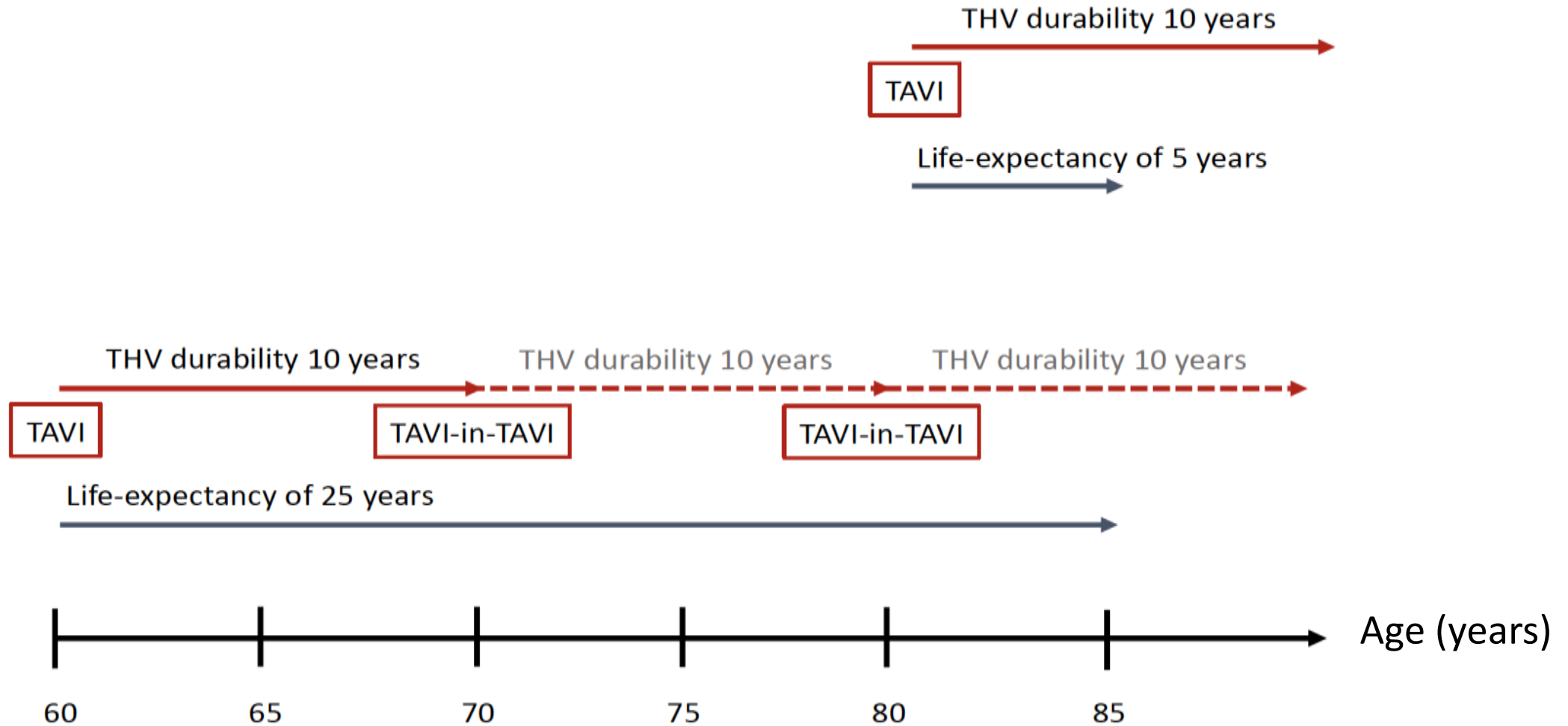


Surgical aortic valves



Patients with longer life-expectancy!

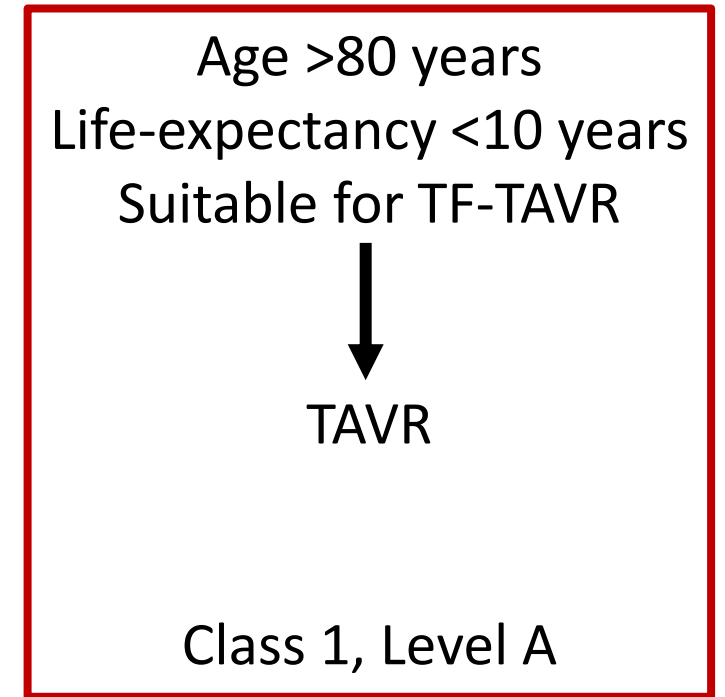
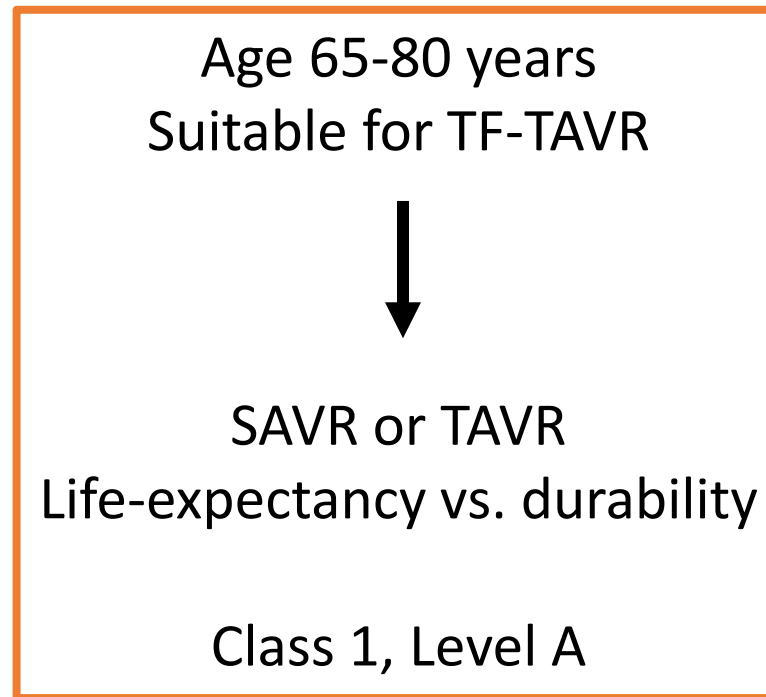
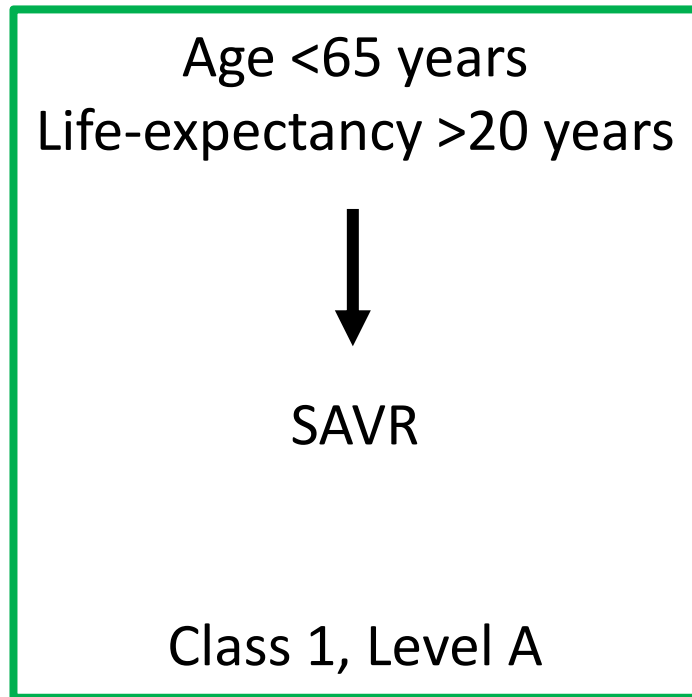
TAVI & patient life-expectancy



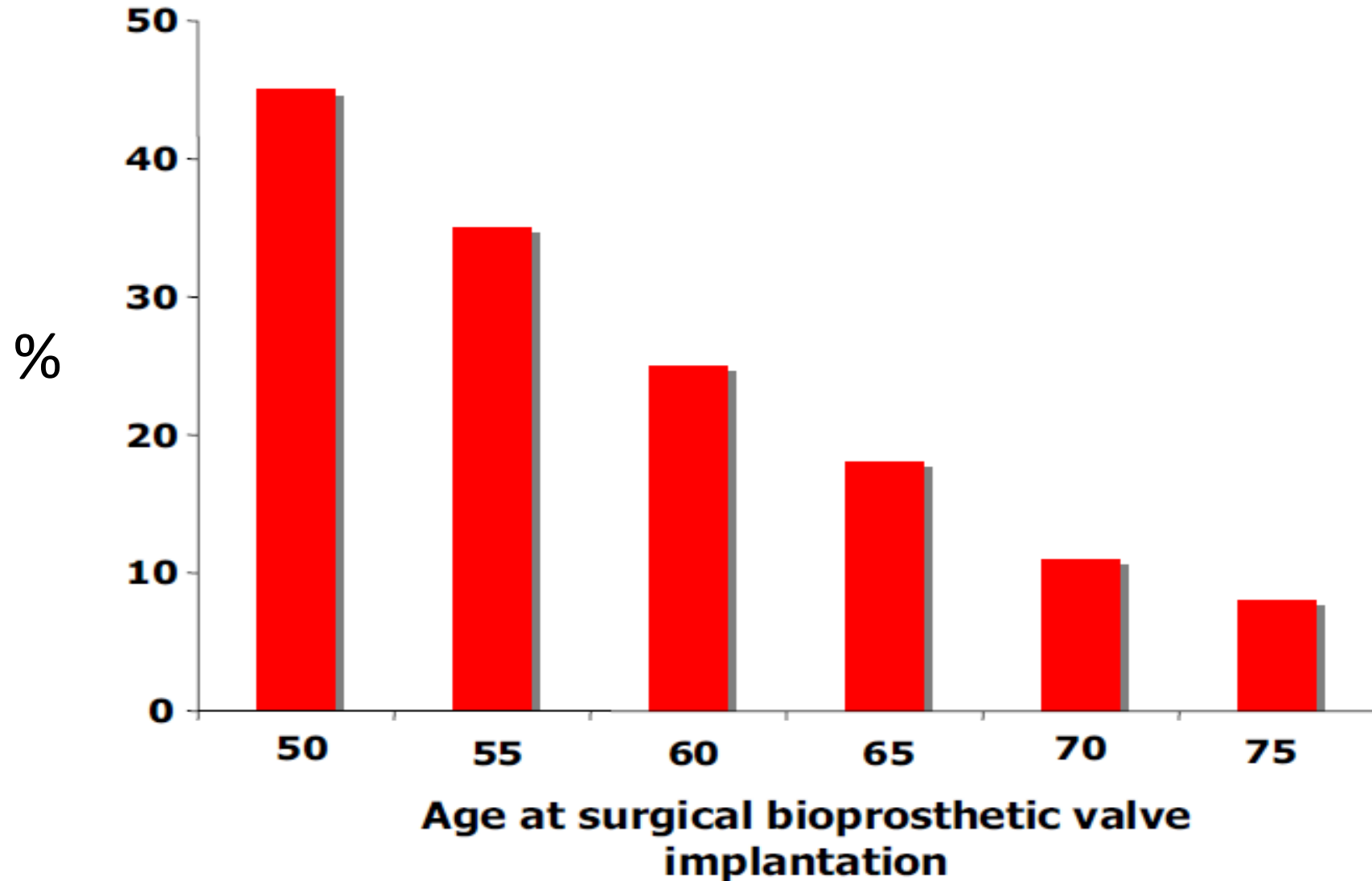
Life-time patient management

2020 ACC/AHA Guideline for the Management of Patients With Valvular Heart Disease

Patients with symptomatic severe aortic stenosis

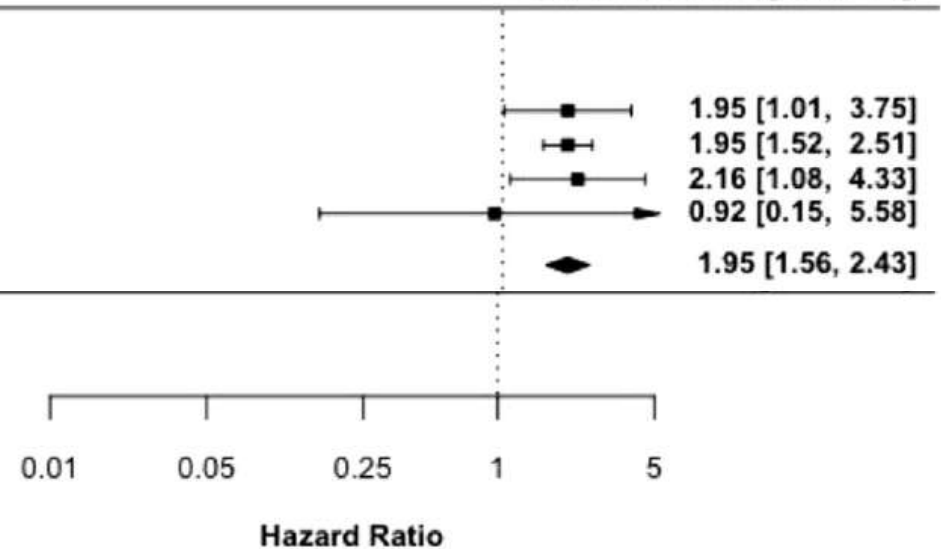


Life-time incidence of re-intervention



Bioprosthetic aortic valve degeneration

Author(s) and Year	Sample Size	HR	Low	High	Hazard Ratio [95% CI]
Patient-prosthesis Mismatch					
Senage et al., 2014	617	1.95	1.01	3.74	1.95 [1.01, 3.75]
Flameng et al., 2014	648	1.95	1.52	2.51	1.95 [1.52, 2.51]
Urso et al., 2014	387	2.16	1.08	4.33	2.16 [1.08, 4.33]
De Paulis et al., 2016	205	0.92	0.19	6.98	0.92 [0.15, 5.58]
Random-effect model ($I^2= 0\%$; Egger's test = 0.47)					1.95 [1.56, 2.43]



Risk factors:

Patient-prosthesis mismatch (HR 1.95)

Patient-prosthesis mismatch

Indexed effective orifice area (iEOA)

>0.85 cm²/m²: not present–mild PPM

0.65-0.85 cm²/m²: moderate PPM

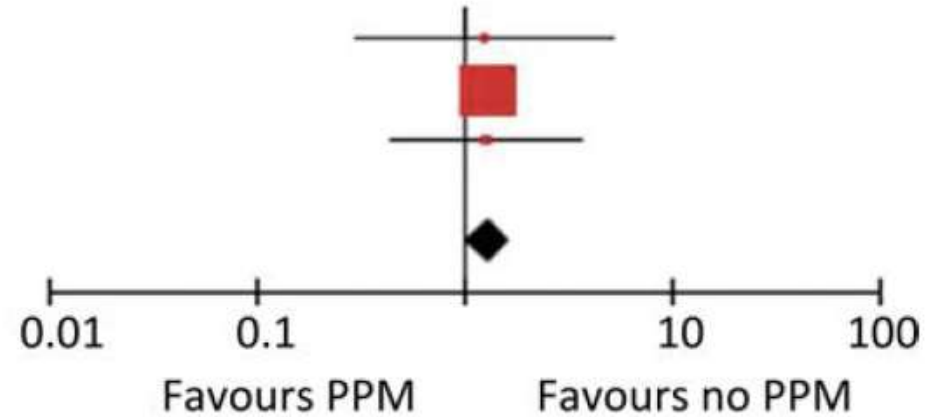
≤0.65 cm²/m²: severe PPM

PPM & cardiac-related mortality

Moderate PPM

Milano 2002	1.27 [0.30, 5.31]
Mohty 2009	1.32 [1.01, 1.74]
Ruel 2004	1.28 [0.45, 3.70]

Total [95% CI] 1.32 [1.02, 1.71]
Heterogeneity: $I^2 = 0\%$

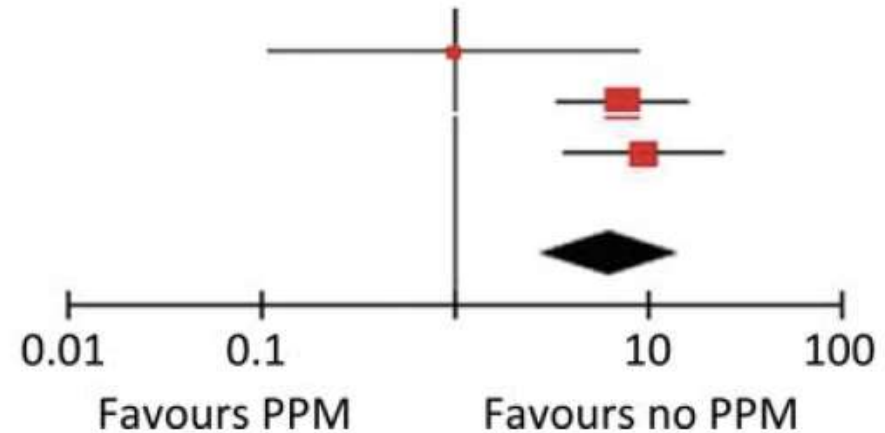


HR 1.32

Severe PPM

Milano 2002	1.00 [0.11, 8.98]
Ruel 2004	7.54 [3.51, 16.19]
Mohty 2009	9.58 [3.74, 24.55]

Total [95% CI] 6.46 [2.79, 14.97]
Heterogeneity: $I^2 = 42\%$



HR 6.46

How to avoid patient-prosthesis mismatch?

PARTNER 3



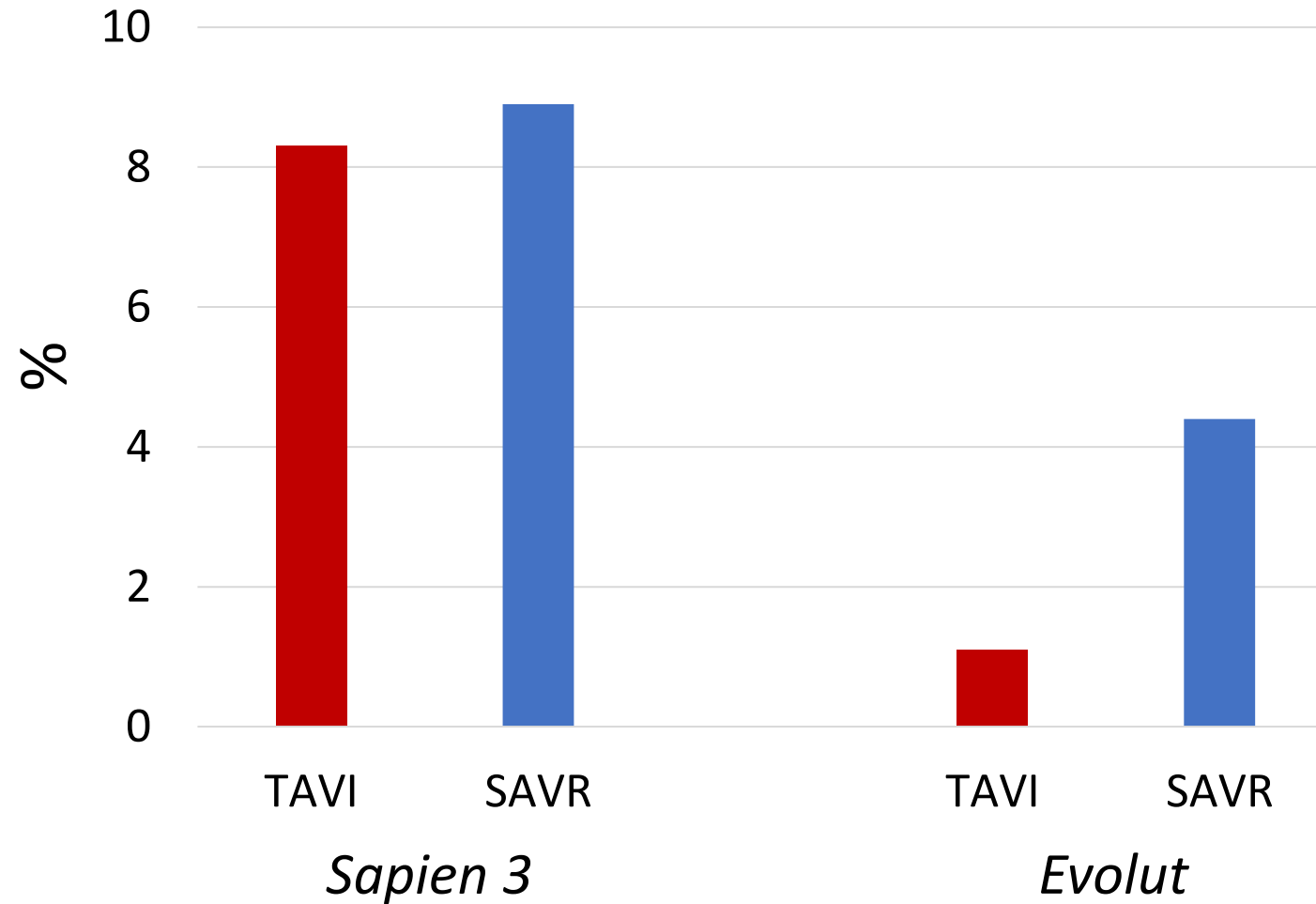
Sapien 3:
Balloon expandable THV
Intra-annular leaflet position

Evolut Low Risk

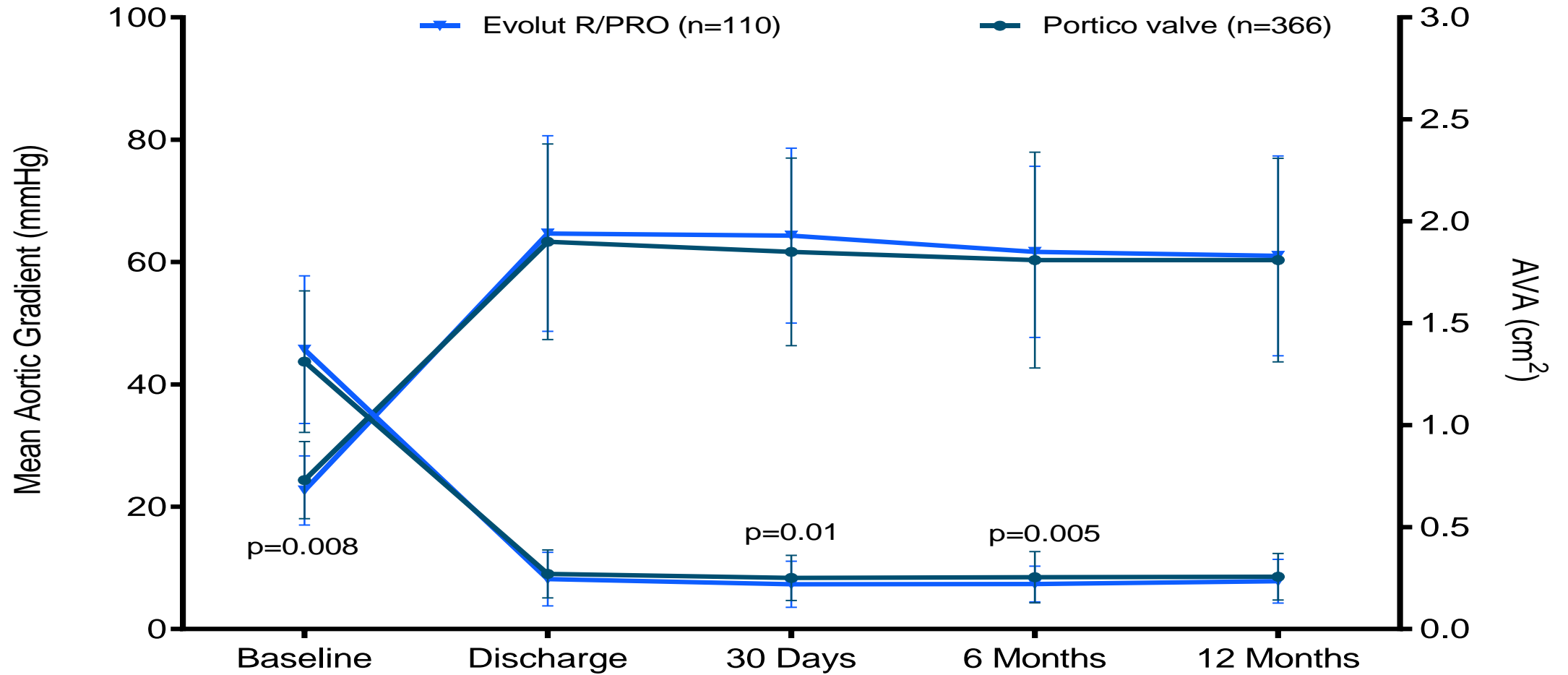


Evolut:
Self-expandable THV
Supra-annular leaflet position

Severe patient-prosthesis mismatch



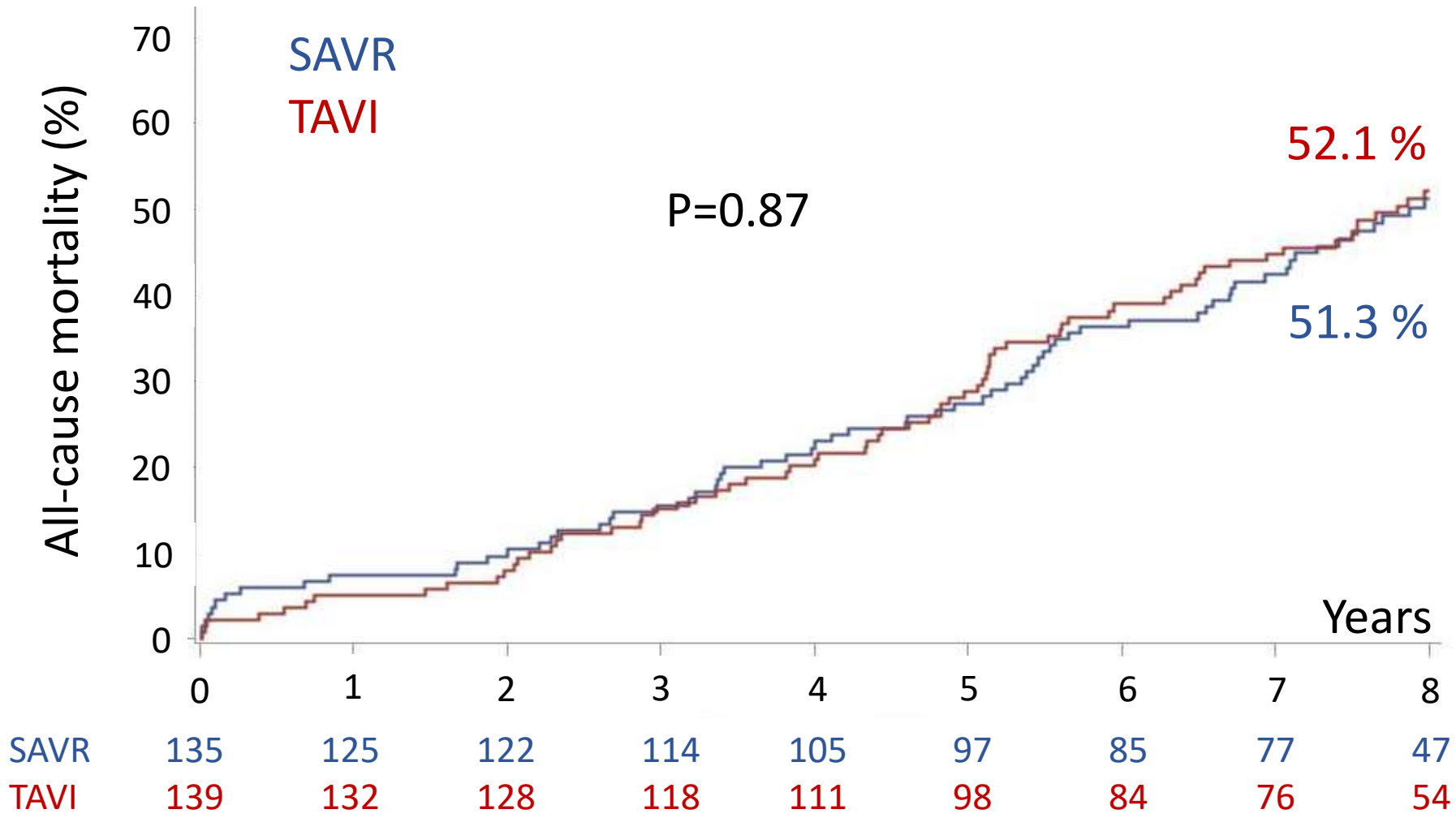
The Portico IDE study



The NOTION trial

Objective:	Compare TAVI vs. SAVR in lower risk patients ≥ 70 years
Primary outcome:	Composite rate of all-cause mortality, stroke or myocardial infarction at 1 year (VARC II-defined)
Secondary outcomes:	Safety, efficacy, and echocardiographic outcomes (VARC II-defined)
Design:	Prospective, multi-centre, non-blinded, randomised
Enrollment period:	December 2009 - April 2013

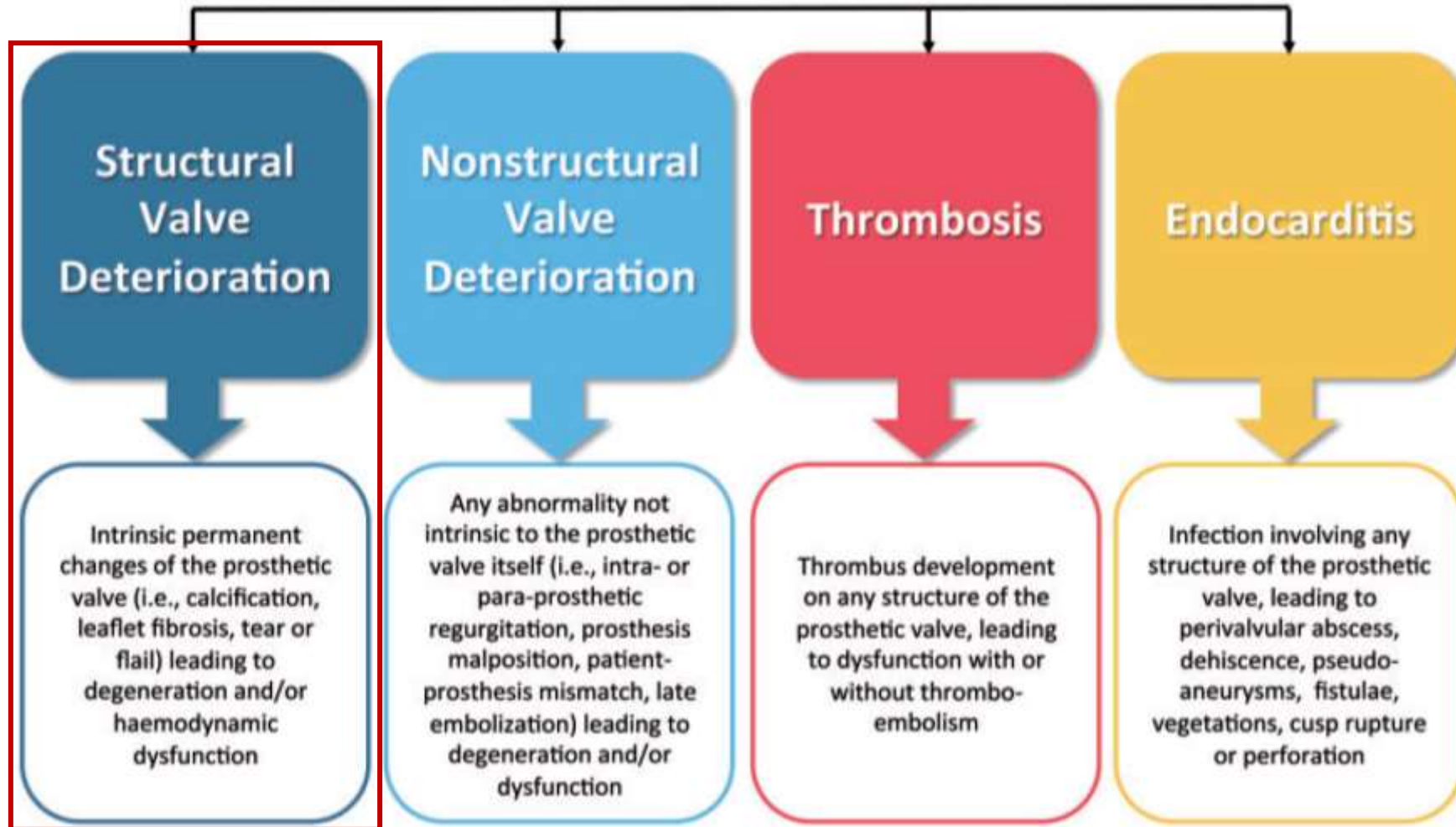
The NOTION trial: All-cause mortality (CoreValve)



European consensus on durability

Standardized definitions of structural deterioration and valve failure in assessing long-term durability of transcatheter and surgical aortic bioprosthetic valves: a consensus statement from the European Association of Percutaneous Cardiovascular Interventions (EAPCI) endorsed by the European Society of Cardiology (ESC) and the European Association for Cardio-Thoracic Surgery (EACTS)

Bioprosthetic valve dysfunction



Structural valve deterioration

Moderate or severe haemodynamic SVD

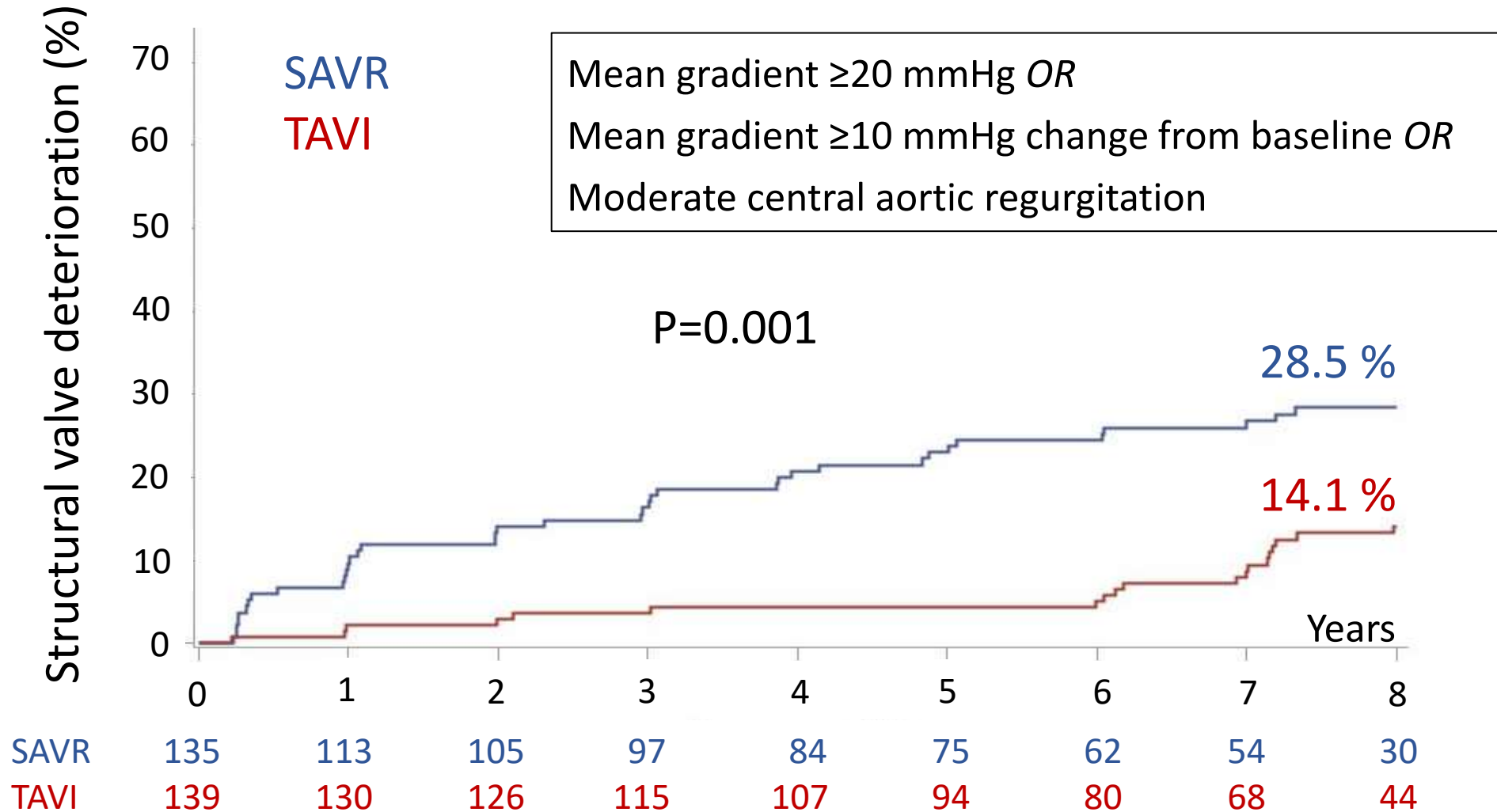
- Mean gradient ≥ 20 mmHg *OR*
- Mean gradient ≥ 10 mmHg change from baseline *OR*
- Moderate/severe intra-prosthetic aortic regurgitation
(*new or worsening from baseline*)

Capodanno et al. Eur Heart J. 2017; 38:3382-90

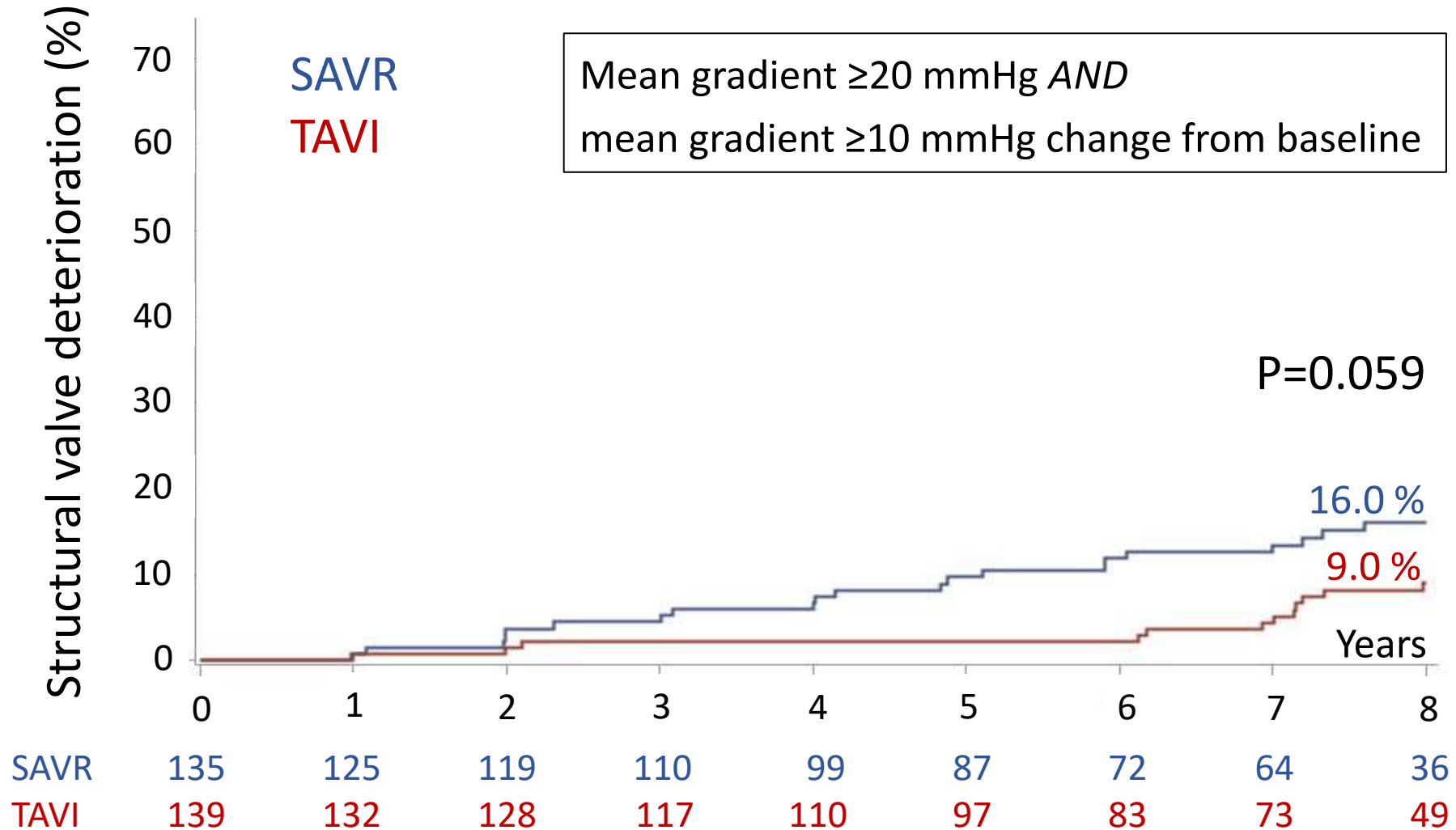
Modified criteria

- Mean gradient ≥ 20 mmHg *AND*
mean gradient ≥ 10 mmHg change from baseline

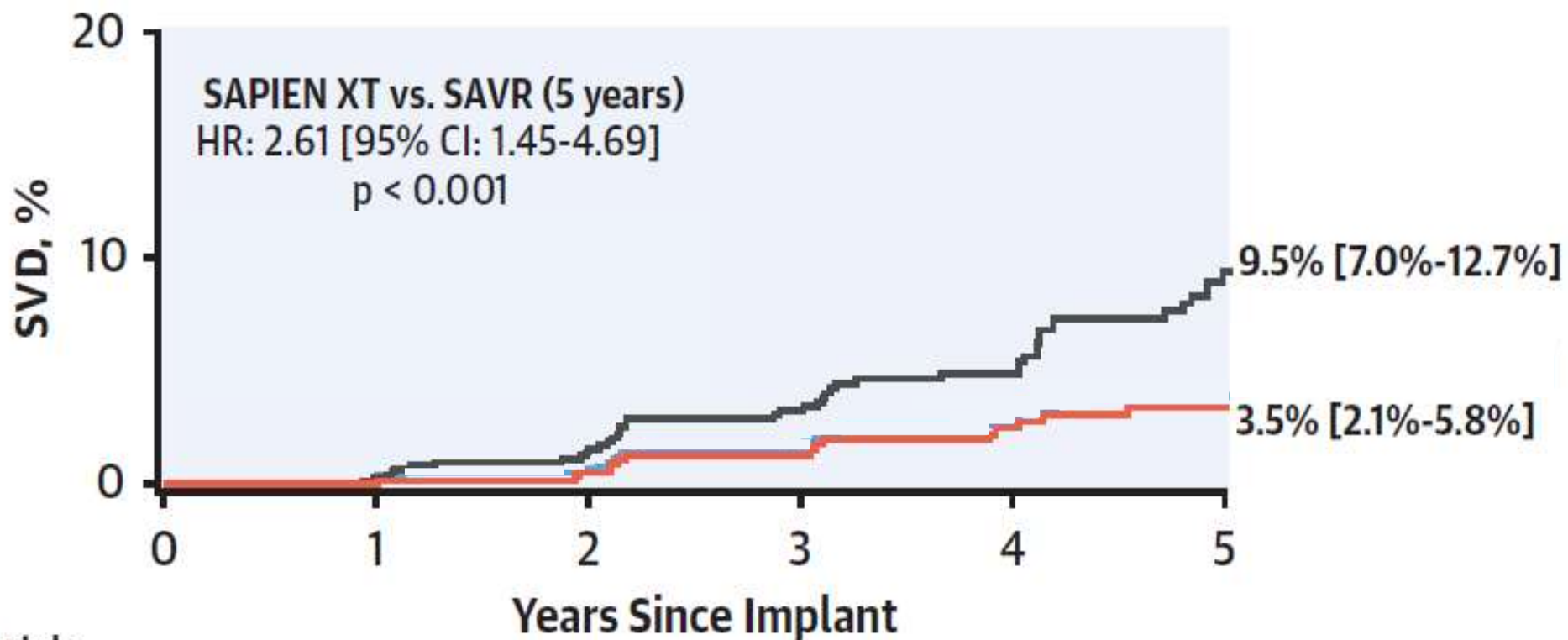
Structural valve deterioration



NOTION: Structural valve deterioration (CoreValve)

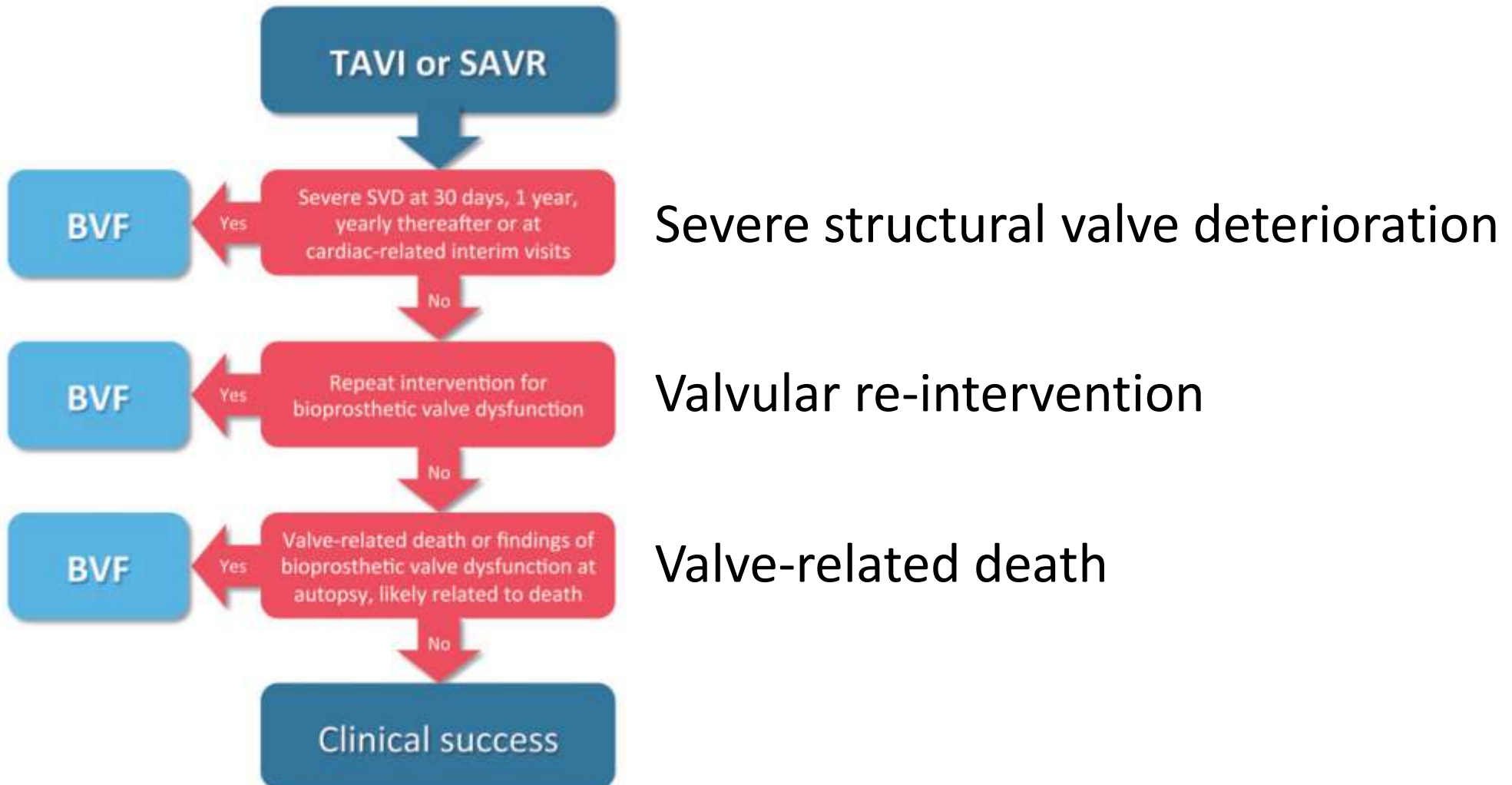


PARTNER 2: Structural valve deterioration (SAPIEN)

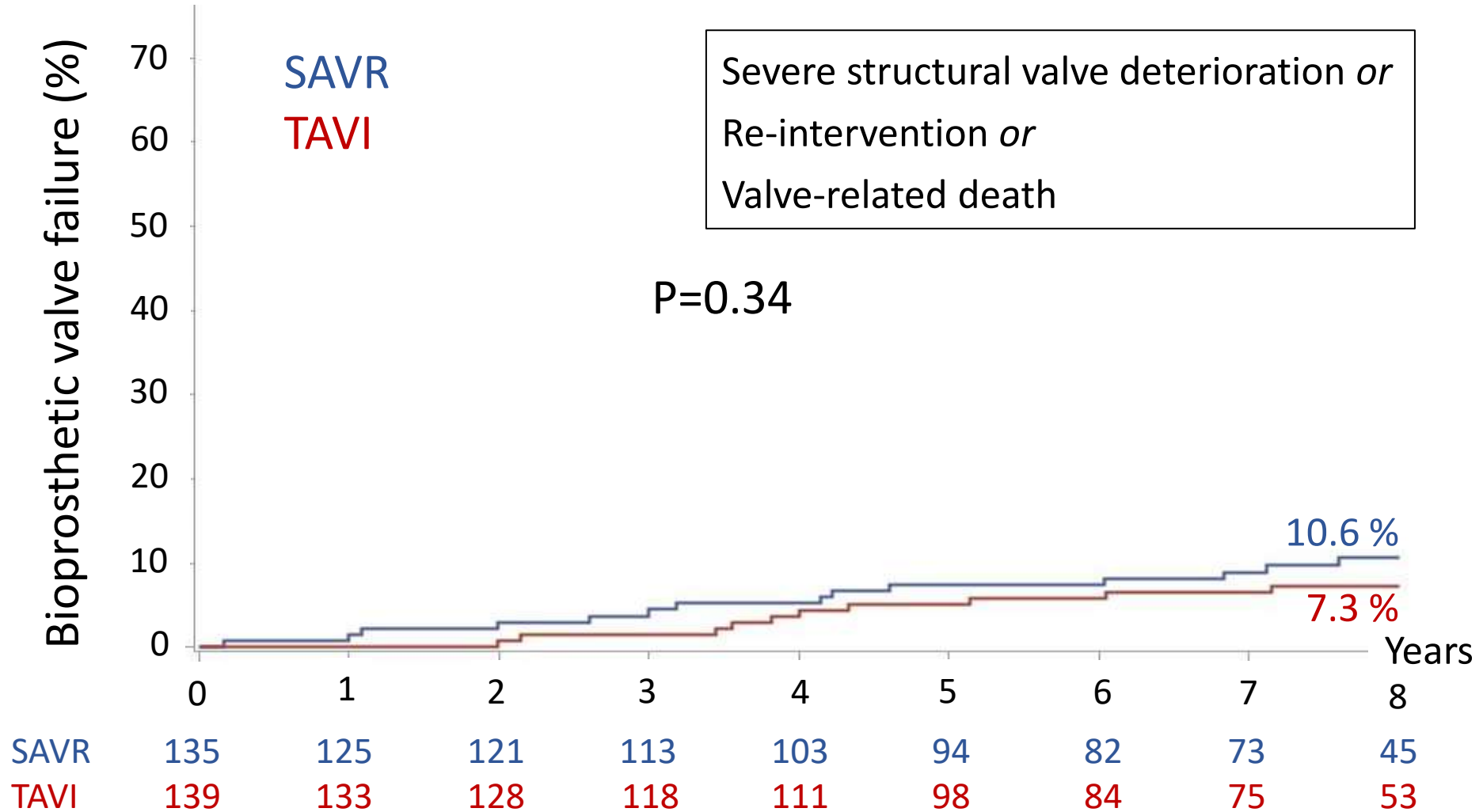


No. at risk:		0	1	2	3	4	5
—	SAVR	664	625	538	449	346	265
—	SAPIEN XT	774	733	622	505	368	297

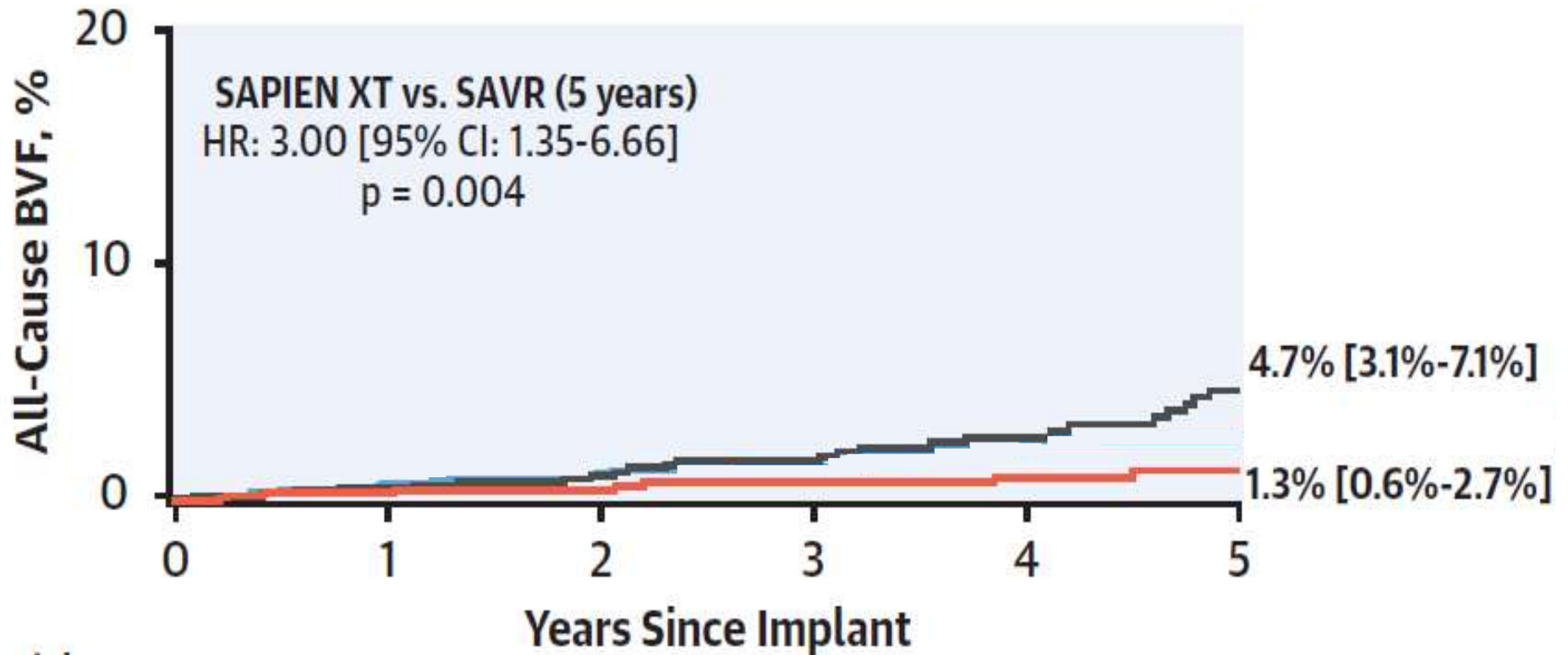
Bioprosthetic valve failure



NOTION: Bioprosthetic valve failure (CoreValve)



PARTNER 2: Bioprosthetic valve failure (SAPIEN)



No. at risk:		0	1	2	3	4	5
— SAVR	936	762	643	536	423	321	
— SAPIEN XT	974	813	689	556	406	326	

Durability of bioprosthetic aortic valves

- Durability of bioprosthetic aortic valves is important - particular in patients with longer life-expectancy
- Self-expandable THV offer largest EOA and lowest transvalvular gradient
- This may transform into lower rate of structural valve deterioration and valve failure as compared to both balloon expandable THV and surgical bioprosthetic aortic valves
- Similar, the lower rate of severe patient-prosthesis mismatch with SE THV may improve the survival rate after TAVI